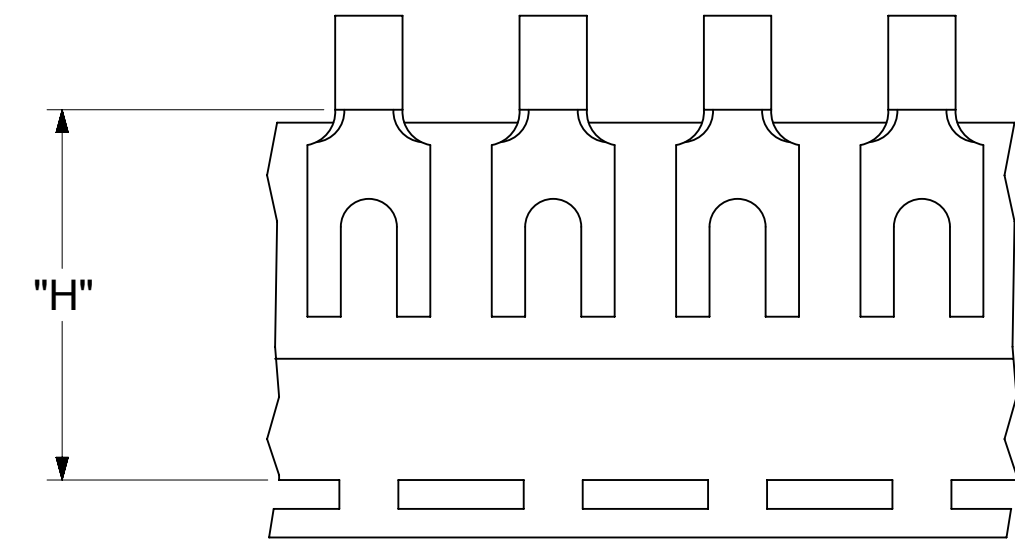
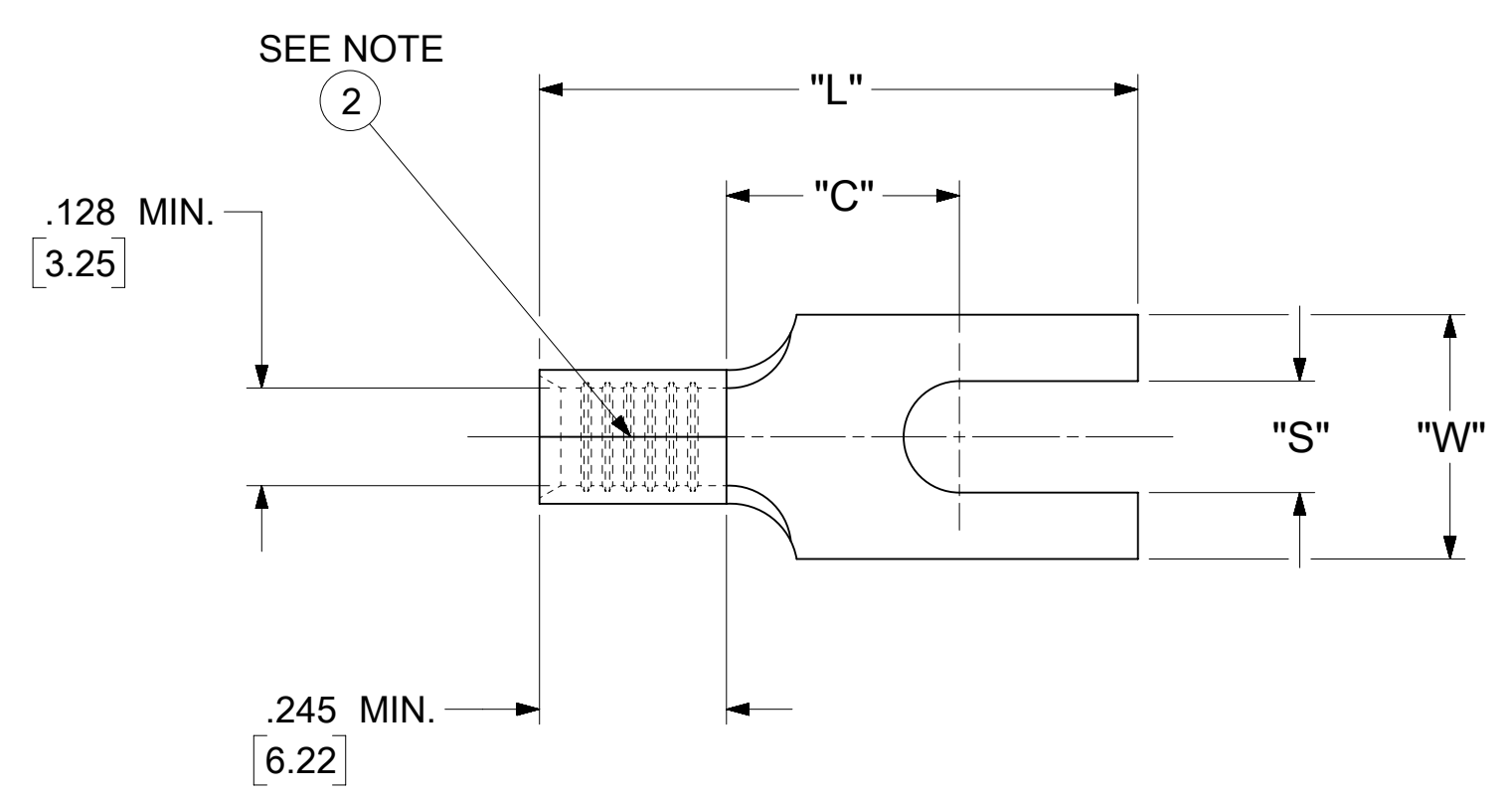


| LOOSE PIECE     |                    | TAPE MOUNTED    |                    | SPECIFICATIONS |                     |                     |             |               |              |
|-----------------|--------------------|-----------------|--------------------|----------------|---------------------|---------------------|-------------|---------------|--------------|
| MATERIAL NUMBER | ENGINEERING NUMBER | MATERIAL NUMBER | ENGINEERING NUMBER | STUD SIZE      | "S"<br>±.005 [0.13] | "W"<br>±.010 [0.25] | "C"<br>MIN. | "L"<br>MAX.   | "H"          |
| ---             | ---                | ---             | ---                | 8              | .173 [4.39]         | .415 [10.54]        | .305 [7.75] | .784 [19.91]  | ---          |
| 191470086       | C-3105-06          | 191470087       | C-3105-06T         | 6              | .146 [3.71]         | .320 [8.13]         | .305 [7.75] | .784 [191.91] | .980 [24.89] |
| 191470088       | C-3105-08          | 191470089       | C-3105-08T         | 8              | .173 [4.39]         |                     |             |               |              |
| 191470090       | C-3105-10          | ---             | ---                | 10             | .198 [5.03]         |                     |             |               |              |



PARTS ON TAPE

- NOTES:
- MATERIAL: COPPER (.040±.001 [1.02] THK.)  
PLATING: ELECTRO-TIN (.0003 MIN).
  - BRAZED SEAM
  - WIRE SIZE: 12-10 AWG  
4.0-6.0 MM<sup>2</sup>
  - "UL" LISTING #E32244  
"CSA" LISTING #18689
  - ALL DIMENSIONS IN INCHES/[MM].
  - PARTS ARE ROHS COMPLIANT.
  - DIMS. SHOWN ARE FOR REFERENCE ONLY.

|         |   |         |                 |   |
|---------|---|---------|-----------------|---|
| SYMBOLS | THIS DRAWING CONTAINS INFORMATION THAT IS PROPRIETARY TO MOLEX ELECTRONIC TECHNOLOGIES, LLC AND SHOULD NOT BE USED WITHOUT WRITTEN PERMISSION |         |                 |   |
|         | DIMENSION UNITS   | SCALE   |                 | CURRENT REV DESC: MIGRATION TO ECTR/NX  |
| ∇ = 0   | INCH/MM   | NTS     |                 | EC NO: 620268<br>DRWN: ABENJAMINLW 2019/07/05<br>CHK'D: DMYRICK 2019/07/08<br>APPR: JMACNEIL 2019/07/10 |
| ∇ = 0   | GENERAL TOLERANCES (UNLESS SPECIFIED)   |         |                 |   |
| ∇ = 0   |   | MM      | INCH            | INITIAL REVISION:<br>DRWN: JJ 1984/11/28<br>APPR: JMACNEIL 2019/07/10                                   |
| ∇ = 0   | 4 PLACES  | ±       | ±               |   |
| ∇ = 0   | 3 PLACES  | ±       | ± 0.005         | DOCUMENT NUMBER: 191470083<br>DOC TYPE: PSD<br>DOC PART: 000<br>REVISION: A                             |
| ∇ = 0   | 2 PLACES  | ± 0.13  | ± 0.01          |   |
| ∇ = 0   | 1 PLACE   | ± 0.25  | ±               | MATERIAL NUMBER: SEE TABLE<br>CUSTOMER: GENERAL MARKET<br>SHEET NUMBER: 1 OF 1                          |
| ∇ = 0   | 0 PLACES  | ±       | ±               |   |
| ∇ = 0   | ANGULAR TOL   | ± 0.5 ° |                 | THIRD ANGLE PROJECTION  |
| ∇ = 0   | DRAFT WHERE APPLICABLE MUST REMAIN WITHIN DIMENSIONS  |         | DRAWING: C-SIZE | SERIES: 19147   |

**NOTES:**

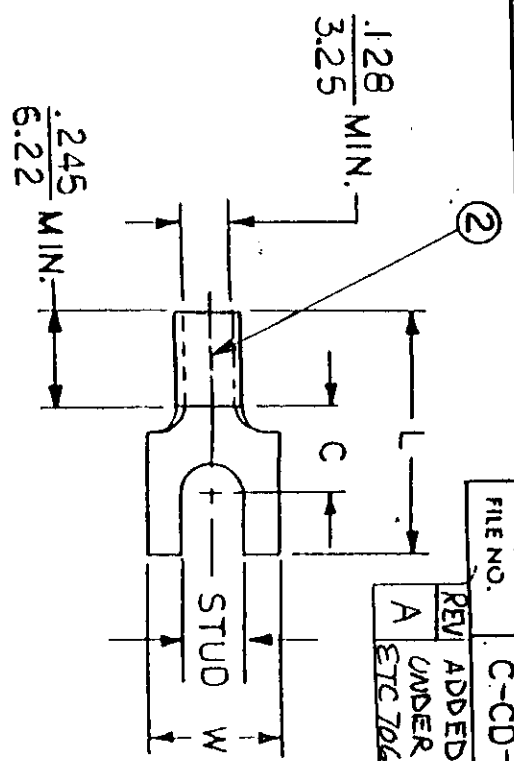
- ① MAT'L: COPPER (STOCK THK.  $\frac{.040}{.102}$ )  
PLATING: ELECTRO-FIN (.0003 MIN.)
- ② BRAZED SEAM

STUD SIZES: ( $\pm .005$ )

- 02 = .094
- 04 = .119
- 06 = .146
- 08 = .173
- 10 = .198
- 14 = .265
- 56 = .328
- 38 = .390

"UL" LISTING #E32244  
"CSA" LISTING #18689

ALL DIMENSIONS =  $\frac{\text{INCHES}}{\text{MM}}$



|          |                       |
|----------|-----------------------|
| FILE NO. | C-CD-303-01           |
| REV      | ADDED 08, 10 TO CHART |
| A        | UNDER PART# 3105      |
|          | ETC 70688-1/31: EDB   |

WIRE SIZE: 12-10 AWG  
40-60 MM<sup>2</sup>

| PART NUMBER  | "W" ±.010            | "C" MIN.            | "L" MAX.              | AVAILABLE STUD SIZES |
|--|----------------------|---------------------|-----------------------|----------------------|
| C-3102   | $\frac{.415}{.3041}$ | $\frac{.305}{.725}$ | $\frac{.784}{.19.91}$ | 08                   |
| C-3105   | $\frac{.520}{8.13}$  | $\frac{.505}{7.75}$ | $\frac{.784}{.19.91}$ | 06, 08, 10           |
| DIMENSIONAL TOLERANCES UNLESS OTHERWISE SPECIFIED  |                      |                     |                       |                      |
| FRAC   | DEC                  | ANG                 | REFERENCE             | SCALE: NTS           |
|  |                      |                     | DRWN. BY: JJ          | DATE: 11-28-84       |
|  |                      |                     | CHKD. BY: GZ          | 11-30-84             |
|  |                      |                     | APPRD. BY:            |                      |
| TITLE: SPADE TONGUE TERMINAL VERSAKRIMP 300-SERIES |                      |                     |                       |                      |
| DWG. NO. A   |                      |                     | CUSTOMER DWG.         |                      |

