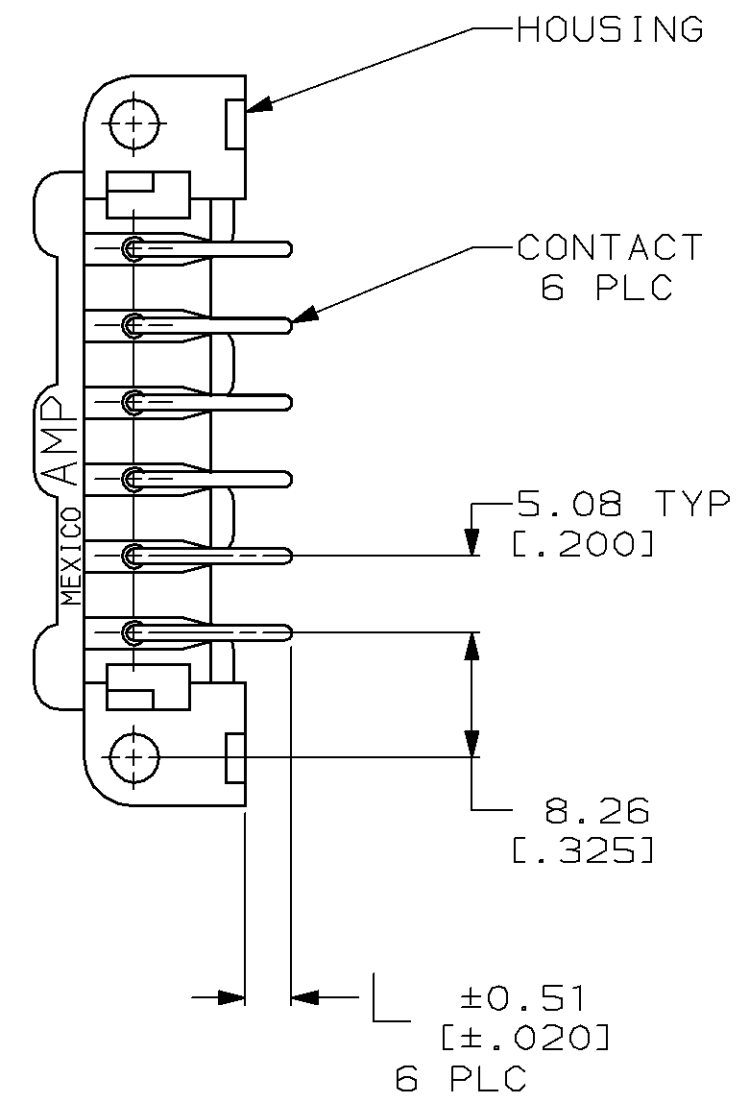
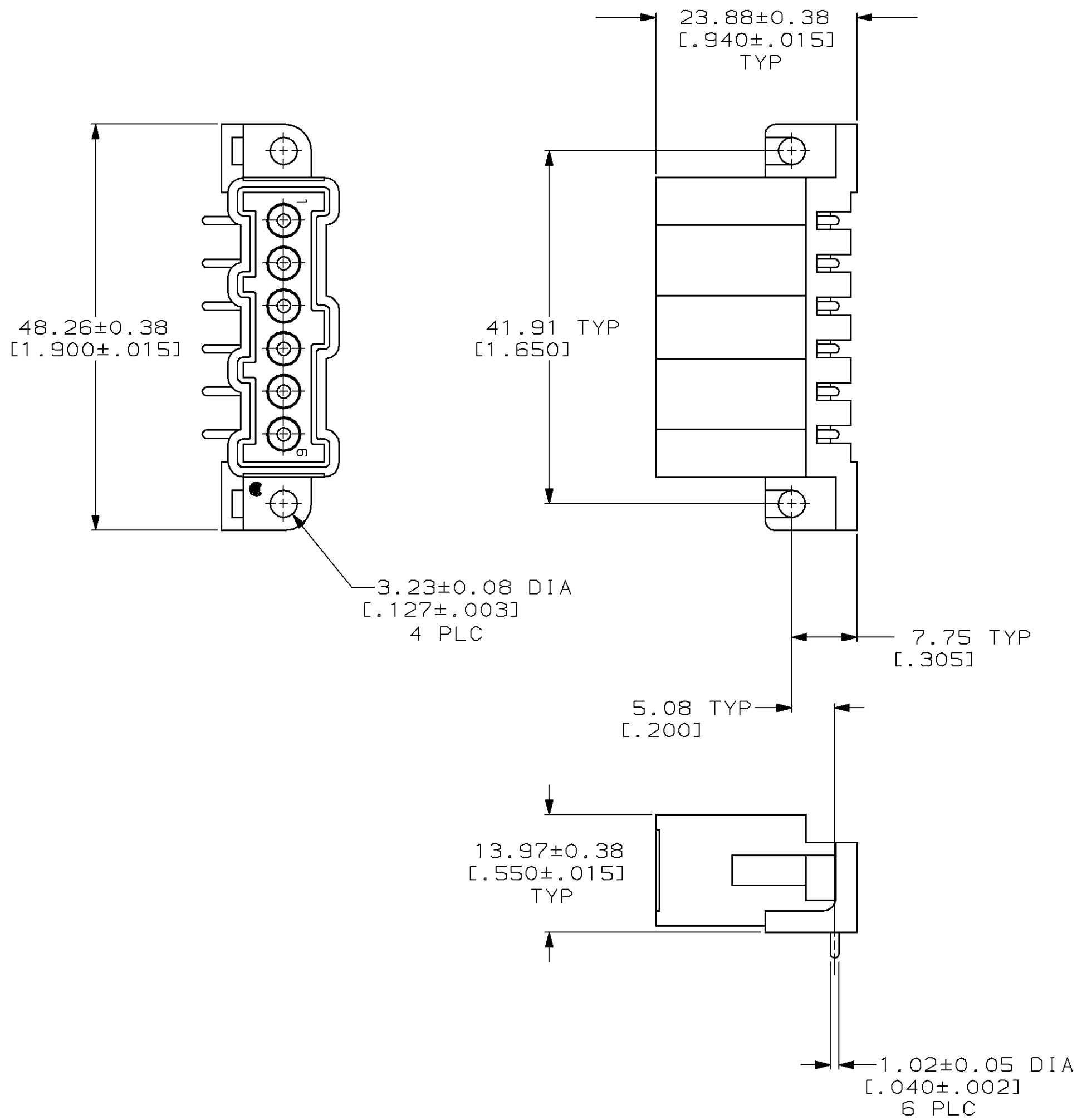


THIS DRAWING IS UNPUBLISHED. RELEASED FOR PUBLICATION
 © COPYRIGHT 19 BY AMP INCORPORATED. ALL INTERNATIONAL RIGHTS RESERVED.

LOC	DIST	P	F	ZONE	LTR	DESCRIPTION	DATE	APPD
FT	13				D	REDWN, ADDED -3 WAS 91-5019-1-1, NPR 3806	11/06/91	-
					E	OBSOLETE -3 PER EC 0020-1322-95	22 FEB 96	MM
					F	REACTIVATE -3 PER EC 0320-45-96	11 SEP 96	MM



△ 3.81µm [.000150] MIN TIN-LEAD OVER 2.54µm [.000100] MIN COPPER.

12.83 [.505]	208116-3
3.05 [.120]	208116-1
L	PART NO

DO NOT SCALE PRINT. UNLESS SPECIFIED DIMENSIONS IN mm [INCHES] TOLERANCES ON: 2 PLC DEC ± 0.25 [.010] 3 PLC DEC ± - ANGLES ± -	DR 11/06/91 J.MCCLINTON	AMP Incorporated Harrisburg, PA 17105-3608		
	CHK 11-8-91 R. STONE			
MATERIAL	APPD -	NAME HEADER ASSEMBLY, PIN, 6 POSITION, METRIMATE		
HOUSING: RED NYLON CONTACT: BRASS	PRODUCT SPEC -			
FINISH	APPD -	SIZE	CAGE CODE	DRAWING NO
CONTACT: △	APPLICATION SPEC -	C	00779	208116
	WEIGHT -	SCALE	2:1	SHEET 1 OF 1