

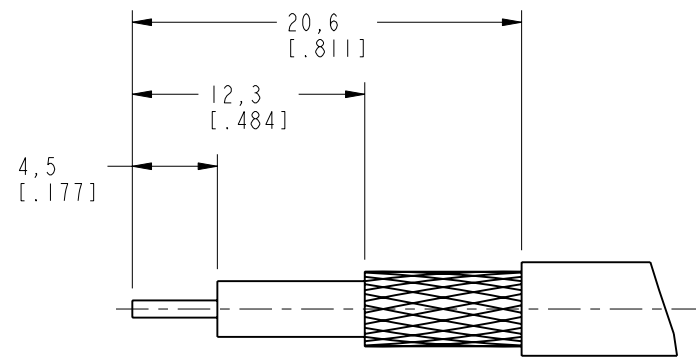
NOTES:

1. MATERIALS AND FINISHES:
  - FERRULE - COPPER, WHITE BRONZE PLATING
  - HEX NUT - BRASS, WHITE BRONZE PLATING
  - LOCK WASHER - BRASS, WHITE BRONZE PLATING
  - BODY - BRASS, WHITE BRONZE PLATING
  - CONTACT - PHOSPHOR BRONZE, GOLD PLATING
  - GASKET - SILICONE RUBBER, RED
  - INSULATOR - PTFE, NATURAL
2. ELECTRICAL:
  - A. IMPEDANCE: 50 OHMS
  - B. FREQUENCY RANGE: DC - 11 GHz
  - C. DIELECTRIC WITHSTANDING VOLTAGE: 2500 VRMS, MIN.
3. MECHANICAL:
  - A. DURABILITY: 500 CYCLES, MIN.
  - B. TEMPERATURE RANGE: -65°C TO +165°C
4. CRIMPED FERRULE HEX CRIMP SIZE .213"
5. CRIMPED CONTACT PIN HEX CRIMP SIZE .100" OR SOLDER.
6. MAX. PANEL THICKNESS = 6.5 [.256]

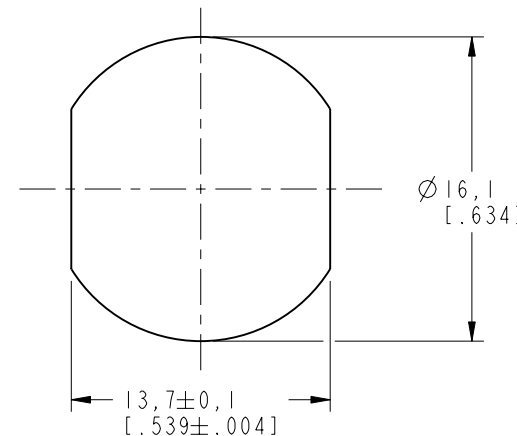
THIRD ANGLE PROJ.

REVISIONS

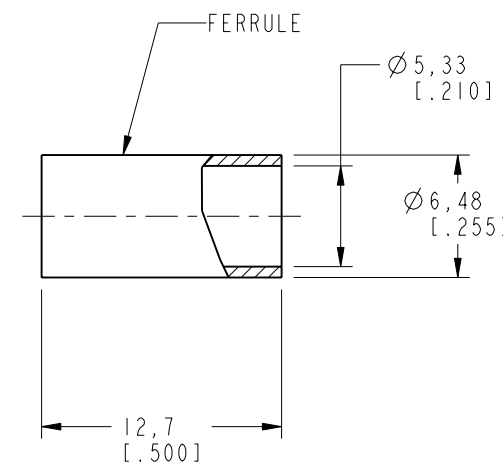
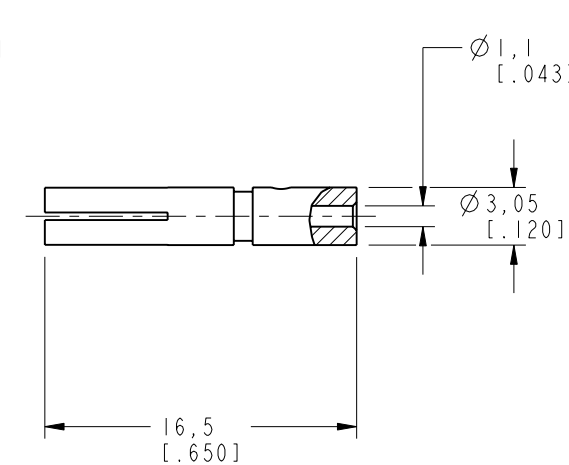
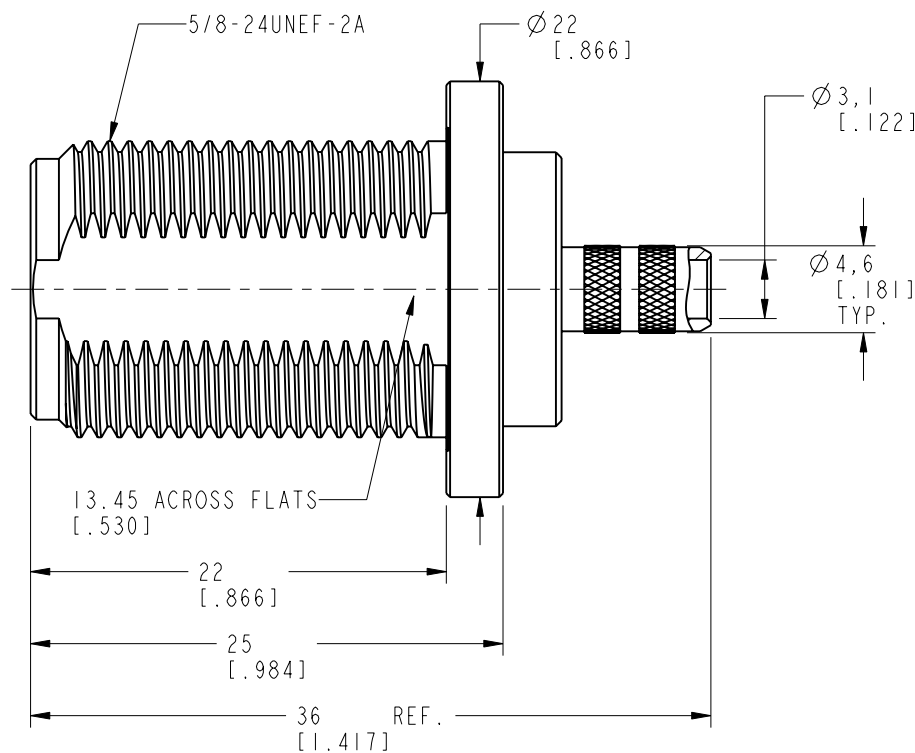
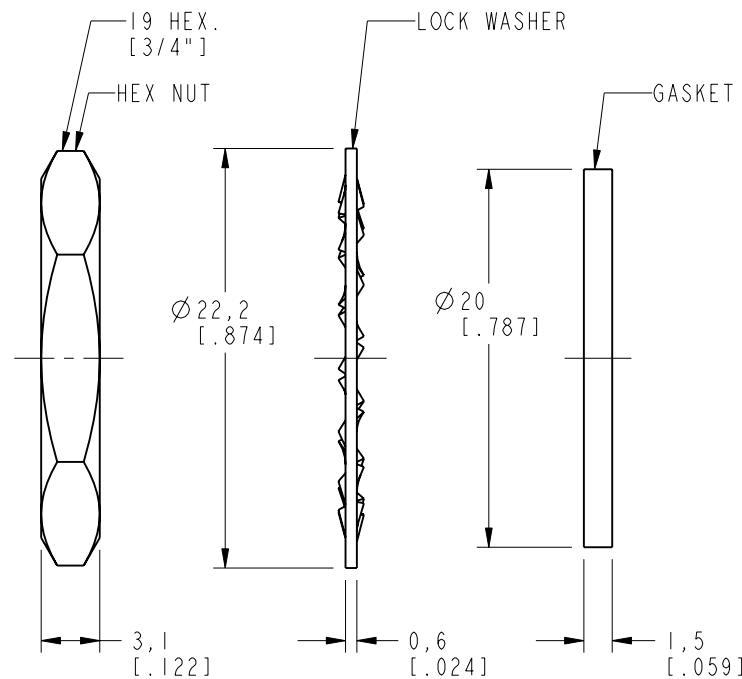
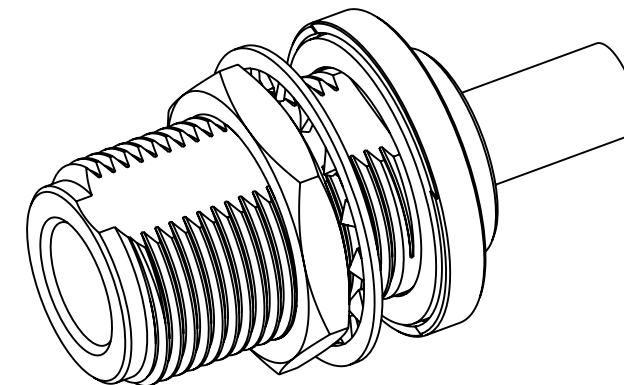
REV	DESCRIPTION	DATE	ECN	APPR
A	UPDATE DRAWING FORMAT	13-Nov-03	-----	GRS
B	UPDATE PART DESCRIPTION	24-Jan-05	-----	GRS
C	MODIFY CABLE DESCRIPTION RG-58	07-Jul-05	-----	GRS
D	"N6421A1-AT5GP-58CU-50" WAS DRAWING NO.	16-Aug-19	12602	MZ



RECOMMENDED  
CABLE STRIPPING DIM'S



RECOMMENDED  
MOUNTING HOLE



**CUSTOMER OUTLINE DRAWING**  
ALL OTHER SHEETS ARE FOR INTERNAL USE ONLY

UNLESS OTHERWISE SPECIFIED, DIMENSIONS ARE IN METRIC AND TOLERANCES ARE:  
 <0.5mm ± 0.05mm    0.5 - 6mm ± 0.1mm    6 - 30mm ± 0.2mm    30 - 120mm ± 0.3mm    ANGLES ± 1°

NOTICE - These drawings, specifications, or other data (1) are, and remain the property of Amphenol corp. (2) must be returned upon request; and (3) are confidential and not to be disclosed to any person other than those to whom they are given by Amphenol Corp. the furnishing of these drawings, specifications, or other data by Amphenol Corp., or to any other person to anyone for any purpose is not to be regarded by implication or otherwise in any manner licensing, granting rights to permitting such holder or any other person to manufacture, use or sell any product, process or design, patented or otherwise, that may in any way be related to or disclosed by said drawings, specifications, or other data.

MATERIAL	SEE NOTES
REFERENCE	
EAR#	
REF:	SAME AS N6421A1-AT30GA-58CU-50 EXCEPT THE CONTACT PLATING
CONFIGURATION LEVEL:	In Work
FINISH	

DRAWN	M. ZHANG	DATE	16-Aug-19
ENGINEER	S. DUAN	DATE	16-Aug-19
APPROVED	S. HSIEH	DATE	16-Aug-19
CAD FILE			

TITLE	
N BULKHEAD CRIMP JACK (FOR RG-58C/U CABLE)	
SCALE: 2.5:1.0	SHEET 2 OF 2
DWG SIZE	REV
B	D

Amphenol RF	
www.amphenolrf.com	
DRAWING NO. N6421A1-AT5GP-58CU-50	
ITEM NO. 036421AAA57CP5F	
PART NO. 172106	