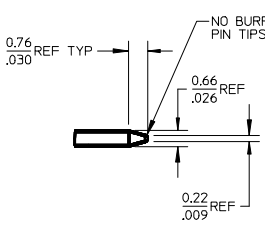
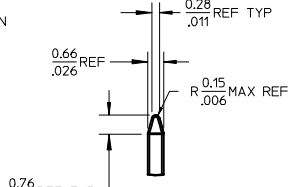


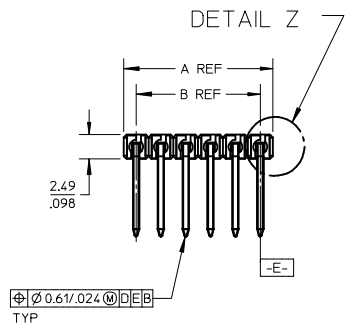
NO. CKTS	DIM. A	DIM. B
2	5.08	2.54
3	7.62	5.08
4	10.16	7.62
5	12.70	10.16
6	15.24	12.70
7	17.78	15.24
8	20.32	17.78
9	22.86	20.32
10	25.40	22.86
11	27.94	25.40
12	30.48	27.94
13	33.02	30.48
14	35.56	33.02
15	38.10	35.56
16	40.64	38.10
17	43.18	40.64
18	45.72	43.18
19	48.26	45.72
20	50.80	48.26
21	53.34	50.80
22	55.88	53.34
23	58.42	55.88
24	60.96	58.42
25	63.50	60.96
26	66.04	63.50
27	68.58	66.04
28	71.12	68.58
29	73.66	71.12
30	76.20	73.66
31	78.74	76.20
32	81.28	78.74
33	83.82	81.28
34	86.36	83.82
35	88.90	86.36
36	91.44	88.90
	3.600	3.500



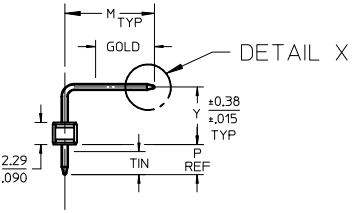
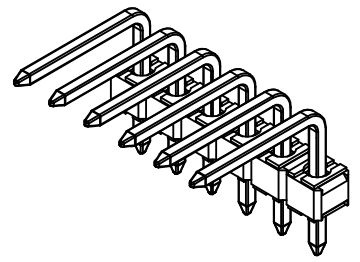
SCALE 5:1
SEE NOTE 10



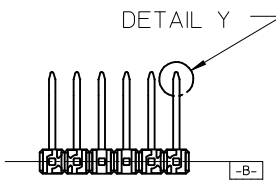
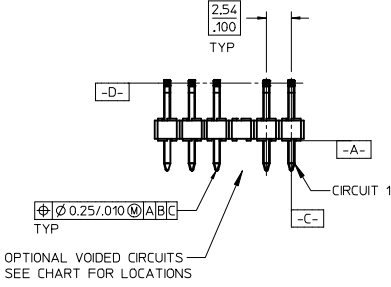
SCALE 5:1
SEE NOTE 10



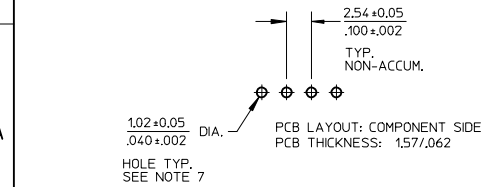
IRREGULARITIES OR BURRS ALLOWED IN THIS AREA, BOTH ENDS



OPTIONAL KINK PIN
SEE NOTE 7



- NOTES:
- MATERIAL: GLASS FILLED NYLON U.L. 94V-0, COLOR: BLACK
 - FINISH: (154) OVERALL TIN: 0.00254/.000100 MIN. OVER NICKEL: 0.00127/.000050 MIN. (208) SELECT GOLD: 0.00038/.000015 MIN. SELECT TIN: 0.00254/.000100 MIN. OVERALL NICKEL UNDERPLATE: 0.00127/.000050 MIN. (228) SELECT GOLD: 0.00076/.000030 MIN. SELECT TIN: 0.00254/.000100 MIN. OVERALL NICKEL UNDERPLATE: 0.00127/.000050 MIN.
 - PRODUCT SPECIFICATION: PS 10-07.
 - PACKAGING INFORMATION: SEE TABLES
 - SOLDERABILITY PER SMES-152.
 - PIN PUSH OUT FORCE: 3 LBS. MIN
 - KINK PIN OPTION NOT RECOMMENDED FOR 2 CIRCUIT PARTS. HOLE SIZE MAY NEED TO BE ADJUSTED FOR 2 CIRCUIT PARTS WITH KINK OPTION FOR PROPER INSERTION INTO THE PCB. SEE SMES-42003 FOR ADDITIONAL INFORMATION ON KINK PIN DIRECTION AND PLACEMENT.
 - HEADERS ARE NOT STACKABLE ON 2.54/.100 CENTERS.
 - PARTS CONFORM TO CLASS B REQUIREMENTS OF COSMETIC SPECIFICATION PS-45499-002.
 - PIN TIP DIMENSIONS SHOWN FOR REFERENCE ONLY. DIMENSIONS APPLY BEFORE PLATING OR ASSEMBLY.



HOLE TYP. SEE NOTE 7

2-*	A1
1	A5
SHT	REV

PIN TIP TOLERANCE	QUALITY SYMBOLS	GENERAL TOLERANCES (UNLESS SPECIFIED)		DIMENSION STYLE	SCALE	DESIGN UNITS	THIRD ANGLE PROJECTION		
		mm	INCH	MM/IN	2:1	INCH	DATE	TITLE	
4 PLACES	$\nabla = 0$	± ---	± ---	DRAWN BY	DATE	INCH	DATE	TITLE	
3 PLACES	$\nabla = 0$	± ---	± .010	JSCHAFER	11/24/03				KK 100 HEADER ASSEMBLY FLAT RIGHT ANGLE BREAKAWAY, LEAD-FREE
2 PLACES	$\nabla = 0$	± 0.25	± .015	CHECKED BY	DATE				
1 PLACE	$\nabla = 0$	± 0.38	± ---	SAMIEC	11/26/03	SD-42376-002	SHEET NO. 1 OF 2		
0 PLACE	$\nabla = 0$	±	±	APPROVED BY	DATE				
ANGULAR ±1/2°		DRAFT WHERE APPLICABLE		MATERIAL NO.	DOCUMENT NO.	THIS DRAWING CONTAINS INFORMATION THAT IS PROPRIETARY TO MOLEX INCORPORATED AND SHOULD NOT BE USED WITHOUT WRITTEN PERMISSION			
DRAFT WHERE APPLICABLE MUST REMAIN WITHIN DIMENSIONS		SEE CHART		SIZE	SD-42376-002				
A5		REV		B		INCORPORATED AND SHOULD NOT BE USED WITHOUT WRITTEN PERMISSION			

