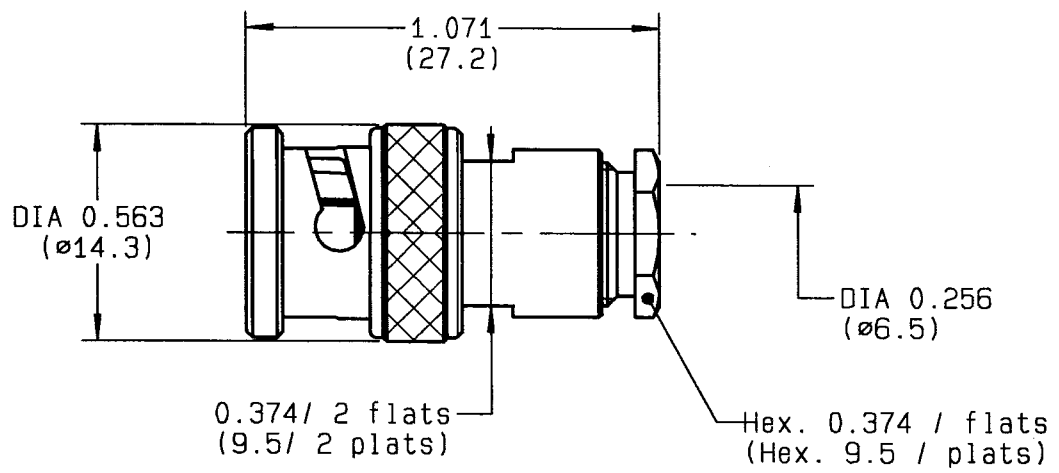


STRAIGHT CABLE PLUG-CLAMP TYPE  
CABLE 6/75

Series : BNC

1 / 2



CABLES : RG59 KX6A

CHARACTERISTICS

NOMINAL IMPEDANCE	50	$\Omega$
FREQUENCY RANGE	0-4	GHz
TEMPERATURE RATING	-65/+165	$^{\circ}\text{C}$
VSWR	TBD +	$0 \times F(\text{GHz})_{\text{Maxi}}$
RF INSERTION LOSS	0.115	$\sqrt{F}(\text{GHz}) \text{ dB Maxi}$
VOLTAGE RATING	500	Vrms Max
DIELECTRIC WITHSTANDING VOLTAGE	1500	Vrms min
INSULATION RESISTANCE	5000	$\text{M}\Omega \text{ min}$
HERMETIC SEAL	-	cc/s
	NA	Atm.cm3/s
LEAKAGE (pressurized only)	-	psi
	NA	MPa
WEIGHT	0.4464	Oz
	12.5	g

STANDARDISATION	-
CABLE RETENTION	40.64 lb min 181 N
CENTER CONTACT RETENTION	
Axial force - mating end	0 lb min NA N
Axial force - opposite end	0 lb min NA N
Torque (Min)	0 Inch.oz NA cm.N
RECOMMENDED TORQUES	
Mating	0 Inch.lb NA cm.N
Panel nut	0 Inch.lb NA cm.N
Clamp nut	13.27 Inch.lb 150 cm.N

CONSTRUCTION

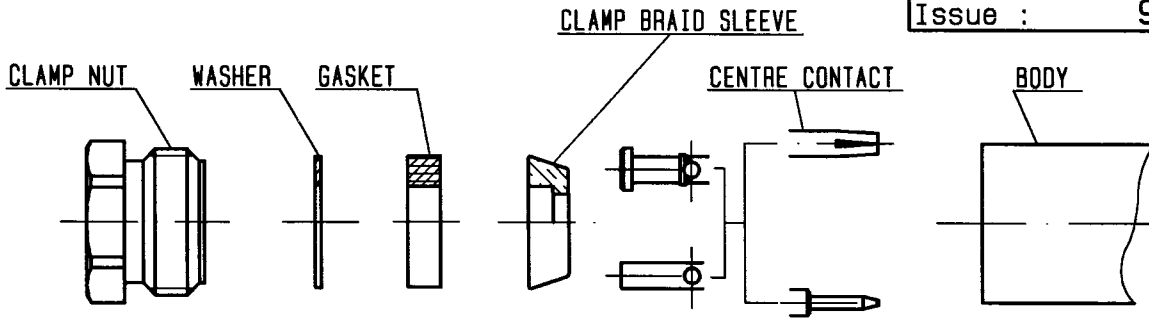
CONNECTOR PARTS	MATERIALS	FINISH
BODY	BRASS	NICKEL
OUTER CONTACT	BRASS	NICKEL
CENTER CONTACT	BRASS	GOLD
INSULATOR	PTFE	-
-	-	-
-	-	-
-	-	-
-	-	-
-	-	-

ISSUE	REVISION No	DESCRIPTION	BY	DATE
-	-	-	-	-
-	-	-	-	-
-	-	-	-	-

Initiated on 17/06/91  
Approval by -

The information given here is subject to change without notice. Design changes may be in order to improve the product.

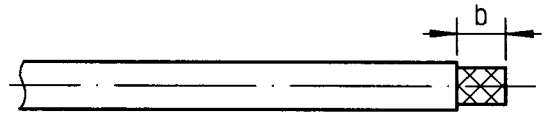




①

Strip the cable .

-  
-  
-  
-



Stripping	a	b	c	d	e
inch	0.098	0.276	0	0	0.118
mm	2.5	7	-	-	3

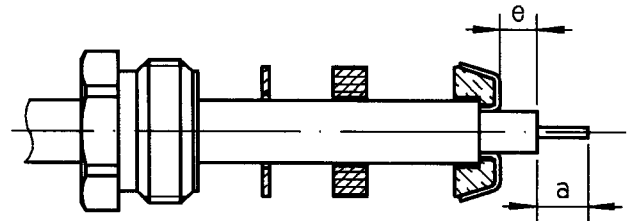
②

Slide the clamp nut , the washer and the gasket onto the cable .

Slide clamp braid sleeve over braid .  
Fold back braid and trim off surplus braid .

Trim back dielectric as shown .

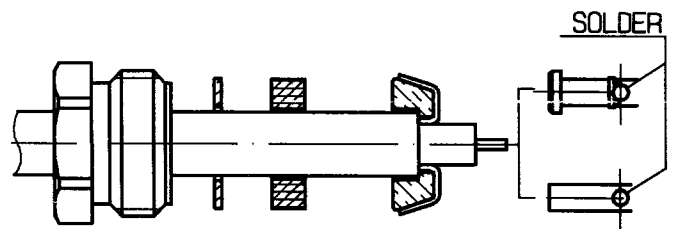
-  
-  
-



③

Solder the cable inner conductor into centre contact .

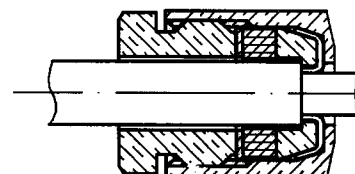
-  
-  
-  
-  
-



④

Screw sub-assembly into the connector body .  
( recommended coupling torque 13.27 in.lb )

-  
-



Hex. : 0.374/flats

PE 03

4112 9211