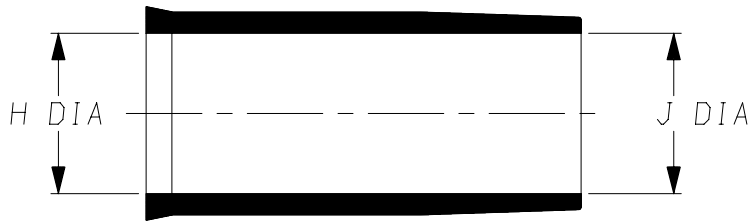


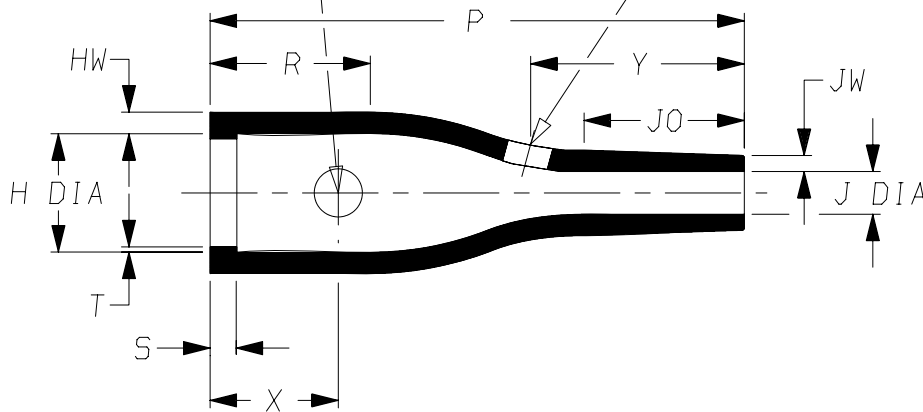
a) Part as supplied

202W232



b) Part after unrestricted recovery

4.5 Dia Potting Port 3.0 Dia Potting Port



DIMENSIONS in millimetres
{in inches, for reference}

Part No.	H	J	P	R	S	T	JO	HW	JW	X	Y		
	Min	Max	Min	Max	±10%	Ref	±10%	±10%	Ref	±20%	±20%	±20%	±20%
	a	b	a	b	b	b	b	b	b	b	b	b	b

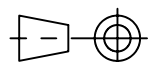
202W232	15 {0.59}	11.7 {0.46}	15 {0.59}	4.3 {0.17}	50 {1.97}	15 {0.59}	2.5 {0.10}	0.5 {0.02}	15 {0.59}	2.0 {0.08}	1.5 {0.06}	12 {0.47}	20 {0.79}
---------	--------------	----------------	--------------	---------------	--------------	--------------	---------------	---------------	--------------	---------------	---------------	--------------	--------------

Potting Port X at 90° to Potting Port Y

Copyright (!)

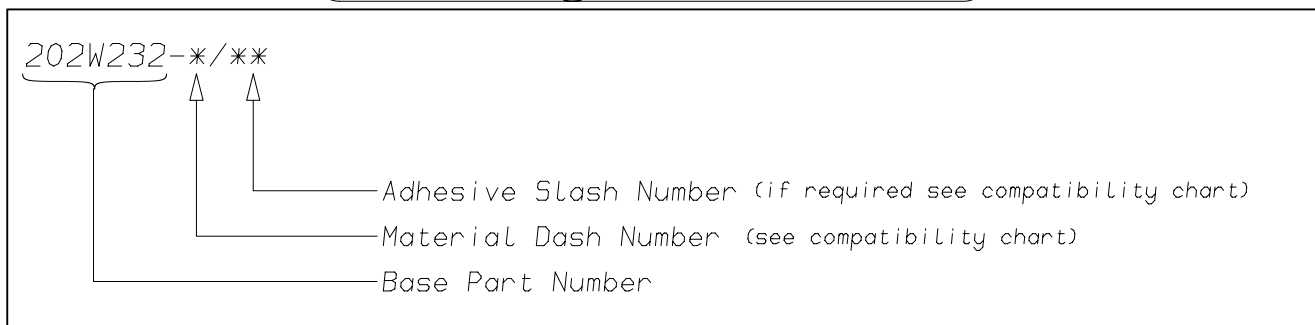
The copyright in this drawing is the property of Tyco Electronics UK Ltd. The drawing is issued on the condition that it is not copied, reproduced or disclosed to a third party, either in whole or in part without the prior written consent of Tyco Electronics UK Ltd.

Drawn A.LILLEY. Checked Issue 4 Date December 2006 Conforms to ISO Recommendations
Approval Design MKTG. Q.A. 3rd Angle Projection
Not to Scale



Raychem		Specification	Part Number
		Control Drawing	202W232 Issue 4
Iss.	Date	E.C.R. No.	Details of Change
2	February 1988	5247	Potting Ports added
3	July 1998	****	Redrawn
4	December 2006	CR06-DM-104	-12 Material description name changed
4	December 2006	CR06-HM-012	Imperial dimensions added

(Ordering Information)



(COMPATIBILITY CHART)

Material Dash Number	Material Description	SPEC Number	Coating Slash Number
-3	POLYOLEFIN, SEMI-RIGID	RT-301, RK-6703	/42, /86, /180
-4	POLYOLEFIN, FLEXIBLE	RT-1304 RT-1050	/42, /86, /180
-6	SILICON	RT-602, RK-6706	N/A
-12	FLUOROELASTOMER, FLEXIBLE	RT-1312, RW-2071	/225
-25	ELASTOMER, FLUID RESISTANT	RT-1325, RK-6713	/42, /86, /225
-100	ZERO HALOGEN	RT-1323, RK-6717	/86, /180
-130	POLYOLEFIN, COMMERCIAL FLEXIBLE	RW-2008	/42

NOTES

- ① As supplied dimensions are for uncoated parts, when coating is added entry diameters will reduce by 1.5mm Max.
- ② Potting Ports are optional, when specified by suffix "-00" they will be located as shown.

Tyco Electronics UK Ltd. Faraday Road, Swindon, Wiltshire, SN3 5HH England Telephone: (01793) 528171 Fax: 572516	Tyco Electronics Corporation 300, Constitution Drive, Menlo Park, CA 94025 USA Telephone (650) 361-3860 Fax: (650) 361-5579
Cage Code K1010	Cage Code 06090