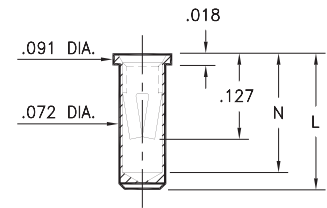


# PIN RECEPTACLES

FOR .032" - .046" DIAMETER PINS

## 0327/0351/0373

03XX-0-15-XX-34-XX-10-0  
Solder mount in .075 min. mounting hole  
Also available on 12mm or 24mm wide carrier tape: See chart for details  
See page 194.14 for Tape & Reel details



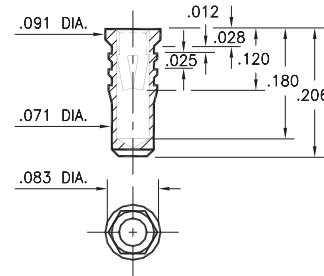
Basic Part Number	Length L	Depth N
0327-0	.206	.180
0351-0	.226	.200
0373-0	.270	.241

### T&R Packaging

Basic Part Number	Tape Width	Parts per 13" Reel
0327-0	12mm	1,400
0351-0	24mm	1,100
0373-0	24mm	1,000

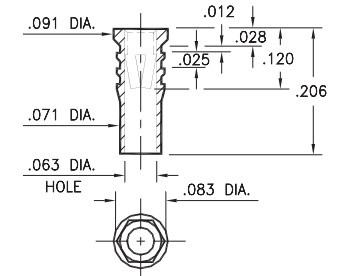
## 0328

0328-0-15-XX-34-XX-10-0  
Hex press-fit in .079 plated through-hole



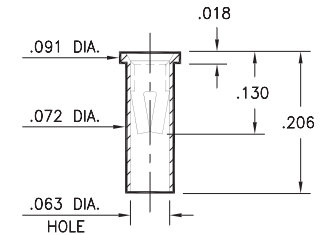
## 0334

0334-0-15-XX-34-XX-10-0  
Hex press-fit in .079 plated through-hole



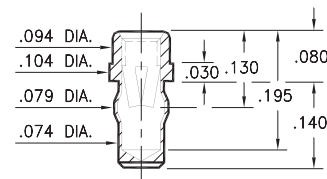
## 0312

0312-0-15-XX-34-XX-10-0  
Solder mount in .075 min. mounting hole  
Also available on 12mm wide carrier tape: 1,400 parts per 13" reel  
See page 194.14 for Tape & Reel details



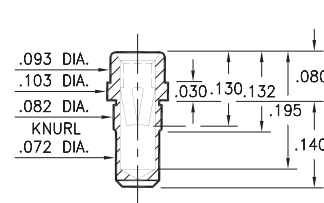
## 0333

0333-0-42-XX-34-XX-10-0  
Press-fit in .076 mounting hole



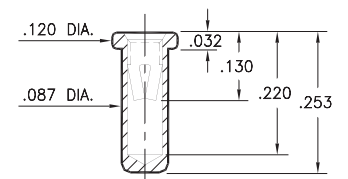
## 0357

0357-0-15-XX-34-XX-10-0  
Press-fit in .078 mounting hole  
Also available on 24mm wide carrier tape: 1,400 parts per 13" reel  
See page 194.15 for Tape & Reel details



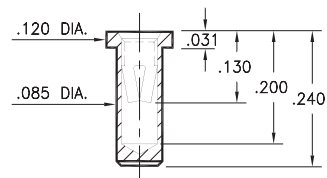
## 0317

0317-0-15-XX-34-XX-04-0  
Solder mount in .091 min. mounting hole



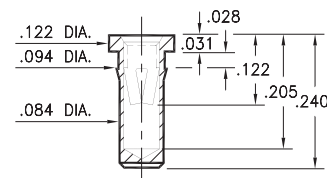
## 0340

0340-0-15-XX-34-XX-10-0  
Solder mount in .087 min. mounting hole  
Also available on 24mm wide carrier tape: 1,250 parts per 13" reel  
See page 194.14 for Tape & Reel details



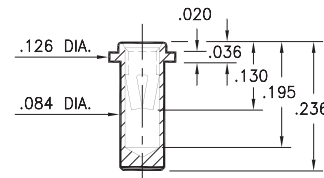
## 0345

0345-0-15-XX-34-XX-10-0  
Press-fit in .089 mounting hole  
Also available on 24mm wide carrier tape: 1,250 parts per 13" reel  
See page 194.15 for Tape & Reel details



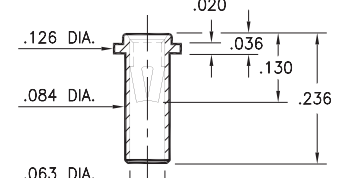
## 0316

0316-0-15-XX-34-XX-10-0  
Solder mount in .087 min. mounting hole  
Also available on 24mm wide carrier tape: 1,250 parts per 13" reel  
See page 194.15 for Tape & Reel details



## 0314

0314-0-15-XX-34-XX-10-0  
Solder mount in .087 min. mounting hole  
Also available on 24mm wide carrier tape: 1,250 parts per 13" reel  
See page 194.15 for Tape & Reel details



### SPECIFICATIONS:

**Shell Material:** Brass Alloy 360, 1/2 Hard  
**Contact Material:** Beryllium Copper Alloy 172, HT  
**Dimensions: Inches**  
**Tolerances On:** Lengths: ±.005  
Diameters: ±.002  
Angles: ± 2°



ORDER CODE: XXXX - X - XX - XX - 34 - XX - 10 - 0

BASIC PART #

SPECIFY SHELL FINISH:

- 01 200 μ" TIN/LEAD OVER NICKEL
- ◆ 80 200 μ" TIN OVER NICKEL (RoHS)
- ◆ 15 10 μ" GOLD OVER NICKEL (RoHS)

SPECIFY CONTACT FINISH:

- 01 200 μ" TIN/LEAD OVER NICKEL
- ◆ 80 200 μ" TIN OVER NICKEL (RoHS)
- ◆ 27 30 μ" GOLD OVER NICKEL (RoHS)

SELECT CONTACT:

#34 CONTACT (DATA ON PAGE 258)

(For alternate contact choices, see group E on page 248)

