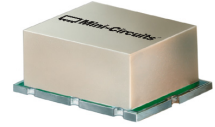


Surface Mount Frequency Mixer

Level 7 (LO Power +7 dBm) 2 to 1000 MHz

SYM-2+ SYM-2



CASE STYLE: TTT166

+RoHS Compliant
The +Suffix identifies RoHS Compliance. See our web site for RoHS Compliance methodologies and qualifications

Available Tape and Reel at no extra cost

Reel Size	Devices/Reel
7"	10, 20, 50, 100, 200
13"	500

Maximum Ratings

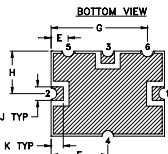
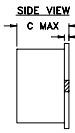
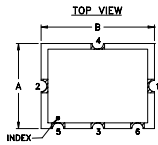
Operating Temperature	-40°C to 85°C
Storage Temperature	-55°C to 100°C
RF Power	50mW
IF Current	40mA

Permanent damage may occur if any of these limits are exceeded.

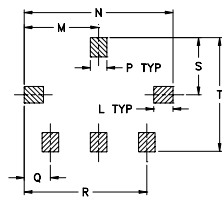
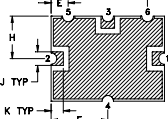
Pin Connections

LO	2
RF	1
IF	3
GROUND	4,5,6

Outline Drawing



PCB Land Pattern



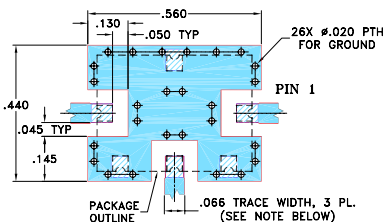
Suggested Layout,
Tolerance to be within ±.002

Outline Dimensions (inch/mm)

A	B	C	D	E	F	G	H	J
.38	.50	.15	.020	.075	.250	.425	.187	.050
9.65	12.70	3.81	0.51	1.91	6.35	10.80	4.75	1.27

K	L	M	N	P	Q	R	S	T	wt.
.050	.070	.270	.540	.060	.095	.445	.208	.415	grams
1.27	1.78	6.86	13.72	1.52	2.41	11.30	5.28	10.54	0.8

Demo Board MCL P/N: TB-12 Suggested PCB Layout (PL-079)



NOTE:

- TRACE WIDTH IS SHOWN FOR ROGERS RO4350B WITH DIELECTRIC THICKNESS .030" ± .002"; COPPER: 1/2 OZ. EACH SIDE. FOR OTHER MATERIALS TRACE WIDTH MAY NEED TO BE MODIFIED.
- THE USE OF SOLDER MASK OVER THE GROUND AREA UNDER THE UNIT AS SHOWN IS RECOMMENDED TO PREVENT POTENTIAL SHORTING. IF USER CHOOSES TO EXPOSE METAL UNDER THE ENTIRE UNIT GROUND PAD FOR IMPROVED GROUNDING, IT IS RECOMMENDED A SOLDER MASK DAM BE APPLIED AROUND EACH GROUND PAD TO ENSURE FILLET AND CONNECTION AT GROUND PADS.
- BOTTOM SIDE OF THE PCB IS CONTINUOUS GROUND PLANE.
 - DENOTES PCB COPPER LAYOUT WITH SMOBC (SOLDER MASK OVER BARE COPPER). SEE NOTE 2.
 - DENOTES COPPER LAND PATTERN FREE OF SOLDER MASK

Notes

- Performance and quality attributes and conditions not expressly stated in this specification document are intended to be excluded and do not form a part of this specification document.
- Electrical specifications and performance data contained in this specification document are based on Mini-Circuit's applicable established test performance criteria and measurement instructions.
- The parts covered by this specification document are subject to Mini-Circuits standard limited warranty and terms and conditions (collectively, "Standard Terms"); Purchasers of this part are entitled to the rights and benefits contained therein. For a full statement of the Standard Terms and the exclusive rights and remedies thereunder, please visit Mini-Circuits' website at www.minicircuits.com/MCLStore/terms.jsp

Features

- low conversion loss, 5.4 dB typ.
- excellent L-R & L-I isolation, 50 dB typ.
- IF response to DC

Applications

- VHF TV
- cellular
- GSM/ISM

Electrical Specifications

FREQUENCY (MHz)	CONVERSION LOSS (dB)	LO-RF ISOLATION (dB)			LO-IF ISOLATION (dB)			IP3 at center band (dBm)						
		L	M	U	L	M	U							
2-1000	DC-1000	70	45	50	30	40	25	63	40	48	24	37	20	17

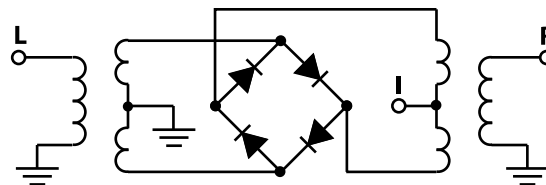
1 dB COMP.: +1 dBm typ.

L = low range [f_L to $10 f_L$] M = mid range [$10 f_L$ to $f_U/2$] U = upper range [$f_U/2$ to f_U]
m = mid band [$2 f_L$ to $f_U/2$]

Typical Performance Data

Frequency (MHz)	Conversion Loss (dB)		Isolation (dB)		VSWR RF Port (:1)		VSWR LO Port (:1)	
	LO	RF	L-R	L-I	LO	RF	LO	RF
1.00	31.00	7.23	>67.00	>67.00	1.30	2.70		
2.00	32.00	6.50	>67.00	>67.00	1.15	2.63		
5.00	35.00	5.80	>67.00	>67.00	1.07	2.77		
10.00	40.00	5.62	>67.00	>67.00	1.06	2.55		
20.00	50.00	5.68	>67.00	>67.00	1.07	2.41		
50.00	80.00	5.58	61.94	63.74	1.09	2.37		
100.00	70.00	5.53	54.33	54.76	1.11	2.29		
167.34	137.34	5.57	48.65	47.61	1.16	2.20		
233.87	203.87	5.72	45.10	43.03	1.18	2.16		
300.40	270.40	5.45	42.56	40.00	1.20	2.13		
366.94	336.94	5.73	40.45	37.57	1.22	2.06		
466.74	436.74	5.82	38.33	34.32	1.23	2.13		
500.00	470.00	5.72	38.80	34.10	1.26	2.09		
599.81	569.81	6.02	37.43	32.81	1.29	2.09		
666.34	636.34	6.11	37.94	31.57	1.34	2.04		
799.41	769.41	6.27	36.06	29.67	1.40	2.13		
832.68	802.68	6.46	35.22	28.79	1.47	2.19		
899.21	869.21	7.00	33.77	26.14	1.55	2.24		
932.48	902.48	7.37	33.17	25.03	1.66	2.28		
1000.00	969.00	7.63	32.49	23.59	1.72	2.30		

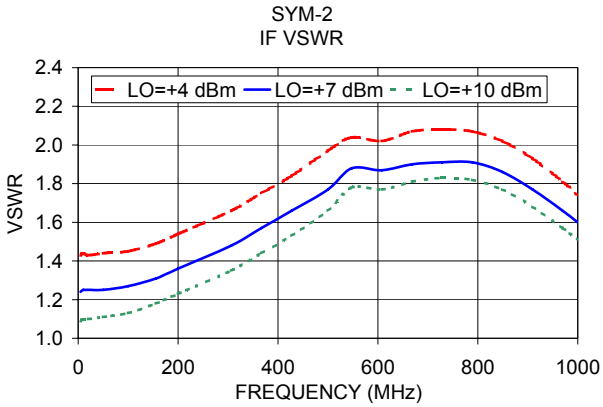
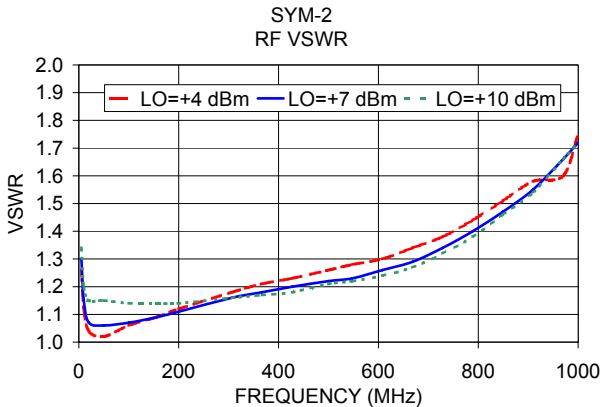
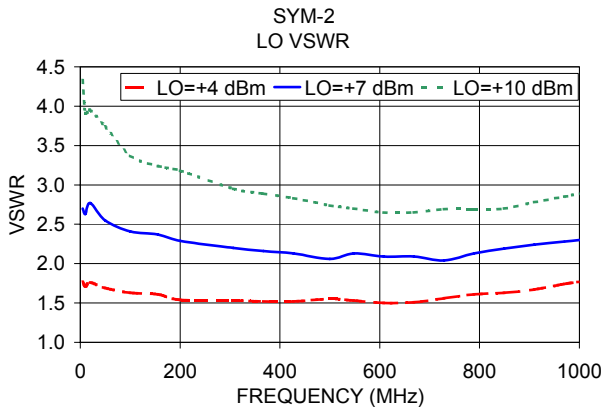
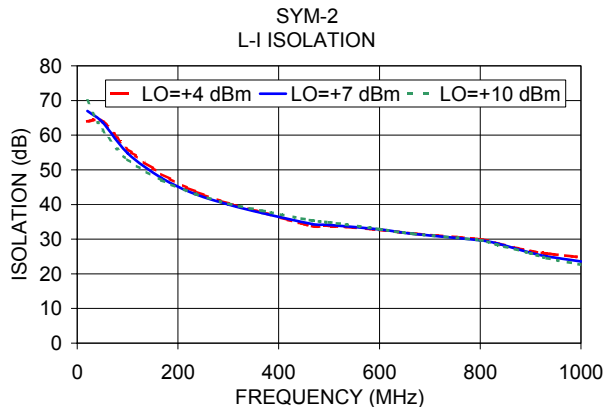
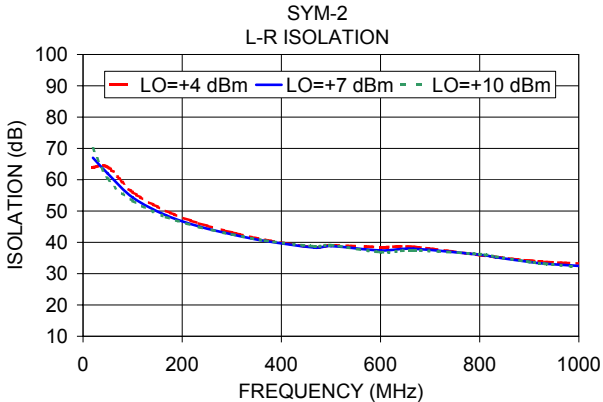
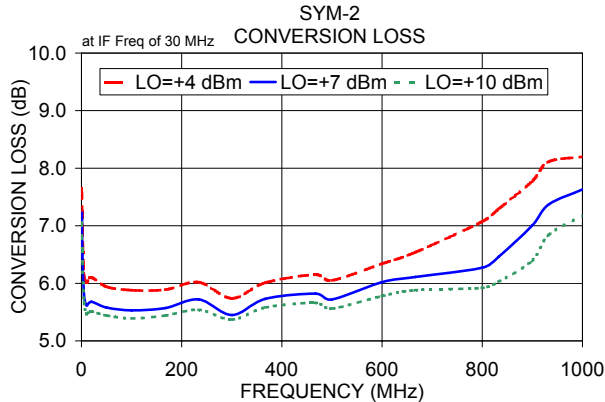
Electrical Schematic



Mini-Circuits

www.minicircuits.com P.O. Box 350166, Brooklyn, NY 11235-0003 (718) 934-4500 sales@minicircuits.com

Performance Charts



Notes

- A. Performance and quality attributes and conditions not expressly stated in this specification document are intended to be excluded and do not form a part of this specification document.
- B. Electrical specifications and performance data contained in this specification document are based on Mini-Circuit's applicable established test performance criteria and measurement instructions.
- C. The parts covered by this specification document are subject to Mini-Circuits standard limited warranty and terms and conditions (collectively, "Standard Terms"); Purchasers of this part are entitled to the rights and benefits contained therein. For a full statement of the Standard Terms and the exclusive rights and remedies thereunder, please visit Mini-Circuits' website at www.minicircuits.com/MCLStore/terms.jsp

