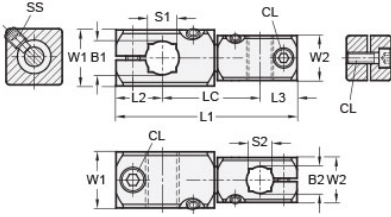




MT16/16-CC2WA-AN

Ruland Adjustable Two-Way Connector Clamp, Thru Holes 16mmx16mm, L 90.5mm, W 25mm, Black Anodized Aluminum




Description

Ruland MT16/16-CC2WA-AN an adjustable two-way connector clamp with thru holes for 16mm round tubes, M6 clamp screws, 25mm width and height, and 90.5mm overall length. It is designed to fit on Ruland tubes and flange bolt bases that begin with MT16. MT16/16-CC2WA-AN is aluminum with a black anodized finish and screws are 304 stainless steel for added corrosion resistance when compared to unplated types. This two-way adjustable connector clamp is commonly used to support tubes for mounting sensors, screens, reflectors, plexiglass machine guards, and other industrial components. It is designed for applications where frequent angular adjustments are needed such as machine diagnostic screens. When paired with MT15:16:20-ALK-M6-25 adjustable clamping levers the user can rapidly reposition the screen angularly and/or vertically without tools providing for a safer and more comfortable working environment for the employee and helping to increase productivity. MT16/16-CC2WA-AN is manufactured by Otto Ganter, inventoried by Ruland, and RoHS3 compliant.

Product Specifications

| | | | |
|-------------------------|-----------------------|-------------------------|-------------------|
| Thru Hole 1 Diameter B1 | 16 mm | Thru Hole 2 Diameter B2 | 16 mm |
| Thru Hole Tolerance | +0.11/-0 mm | Thru Hole 2 Tolerance | +0.11/-0 mm |
| Width & Height W1 | 25 mm | Width and Height 2 W2 | 25 mm |
| Edge to Center 1 L2 | 20 mm | Edge to Center 2 L3 | 20 mm |
| Center To Center LC | 50.5 mm | Overall Length L1 | 90.5 mm |
| Clamp Screw CL | M6 | Set Screw SS | M6 |
| Weight (lbs) | 0.306400 | Material Specification | Anodized Aluminum |
| Manufacturer | JW Winco/ Otto Ganter | UPC | 634529231760 |
| Country of Origin | Germany | Tariff Code | 7609.00.0000 |
| UNSPC | 31162908 | | |

Note 1 Performance ratings are for guidance only. The user must determine suitability for a particular application.

Prop 65  **WARNING** This product can expose you to the chemical Nickel (metallic), known to the State of California to cause cancer. For more information go to www.P65Warnings.ca.gov.