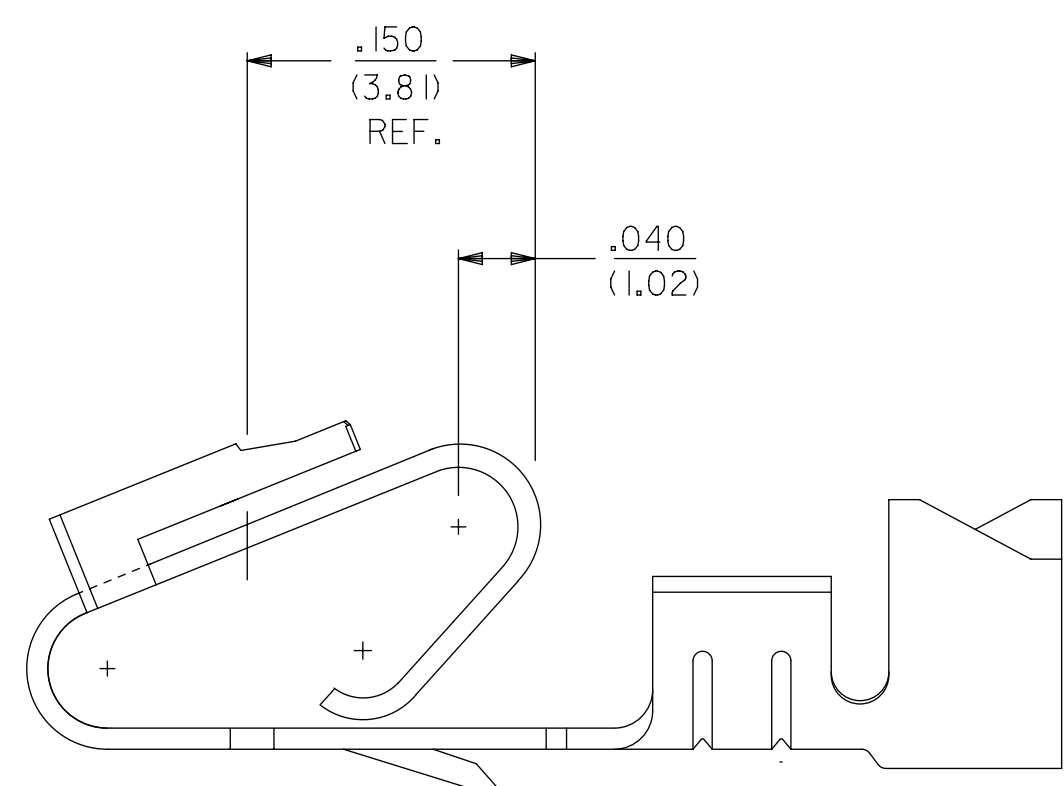
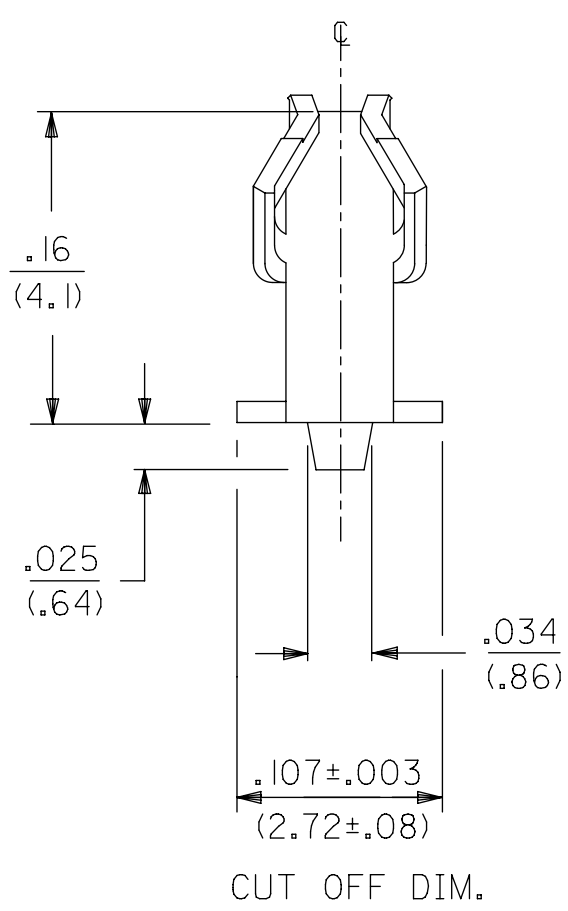


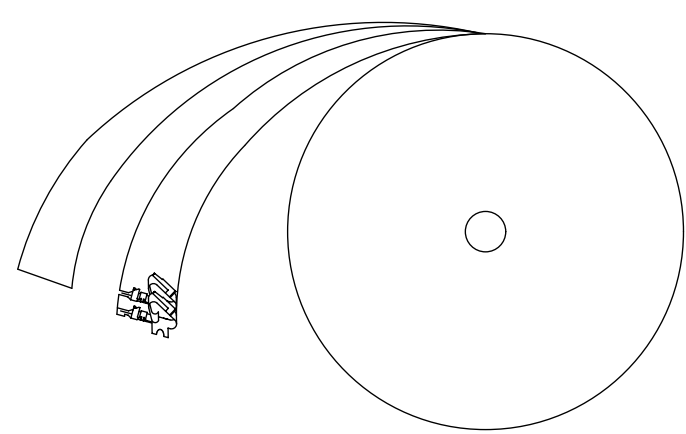
ALTERNATE GEOMETRY  
SEE NOTE 10



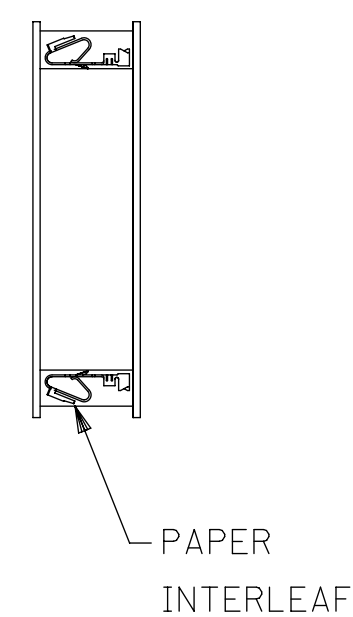
SELECTIVE PLATING  
LOCATION



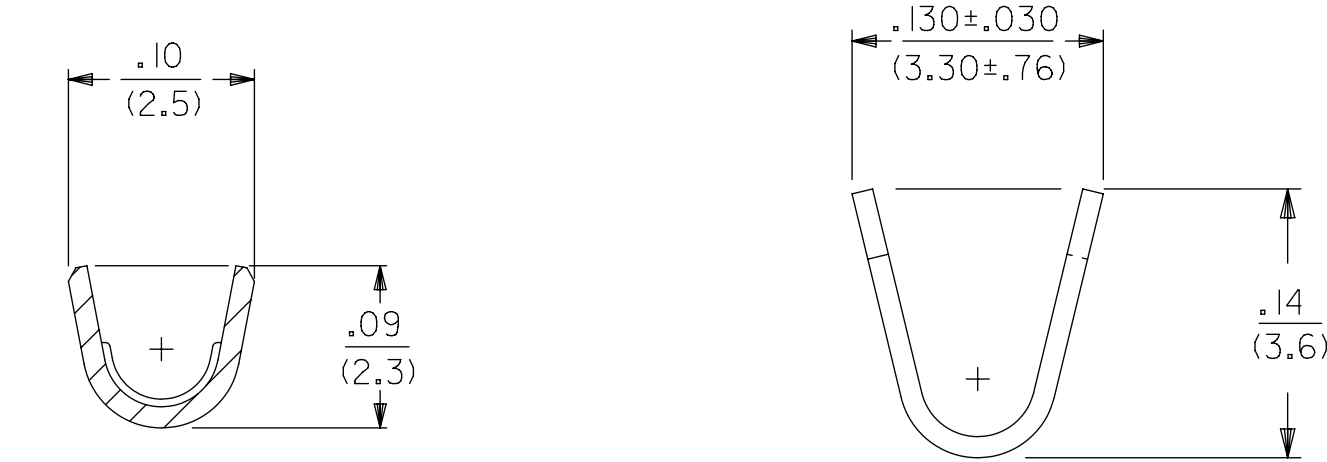
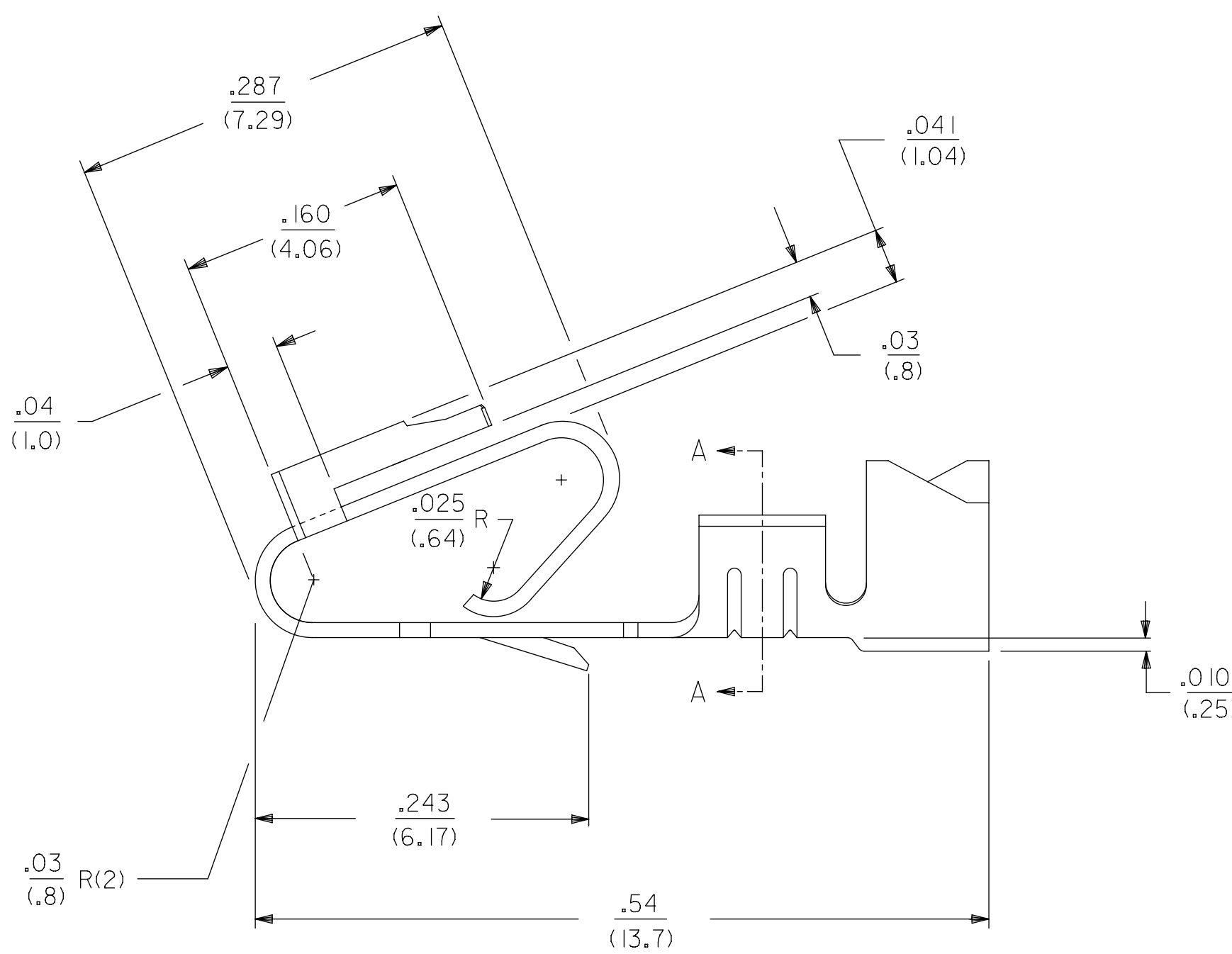
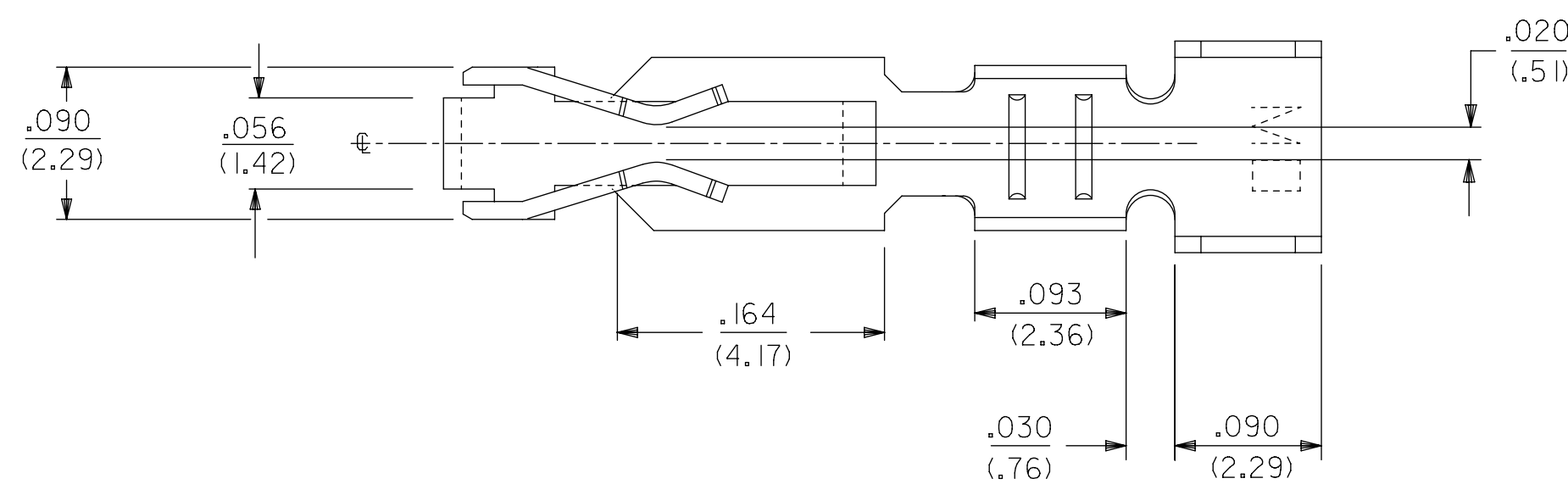
WINDING DETAIL "A"



WINDING DETAIL "B"



PAPER  
INTERLEAF

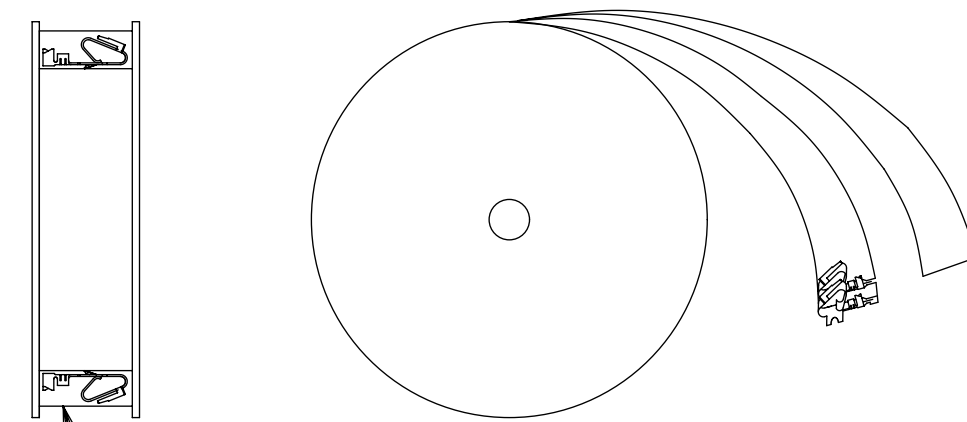


SECTION A-A

LEGEND: 6838-\*(\*)\*\*  
 WINDING  
 A= PER DETAIL A  
 BLANK= PER DETAIL B  
 FORM  
 BLANK= CHAIN  
 L= LOOSE  
 PLATING  
 SEE NOTE 2

MATERIAL: \_\_\_\_\_  
 (.27)/.0106 THK  
 BLANK=BRASS  
 A=PHOS BRONZE

- NOTES:  
 1. MATERIAL: SEE LEGEND  
 2. FINISH:  
 909 - OVERALL HOT TIN DIP: .000100/(0.00254) MIN.  
 154 - OVERALL TIN: .000100/(0.00254) MIN. OVER  
 .000050/(0.00127) MIN. NICKEL.  
 555 - SELECT HARD GOLD: .000015/(0.00038) MIN.  
 OVERALL NICKEL: .000030/(0.00076) MIN.  
 558 - SELECT HARD GOLD: .000030/(0.00076) MIN.  
 OVERALL NICKEL: .000050/(0.00127) MIN.  
 OVERALL HARD GOLD FLASH: .000002/(0.00005) MIN.  
 561 - SELECT HARD GOLD: .000030/(0.00076) MIN.  
 OVERALL NICKEL: .000050/(0.00127) MIN.  
 3. PRODUCT SPECIFICATION: PS-40-02  
 4. PACKAGING SPECIFICATION: CHAIN FORM: SEE PK-2759-002  
 LOOSE FORM: SEE PK-2759-001  
 5. TERMINAL FOR USE IN HOUSING SERIES 6442 AND 41695.  
 6. SEE 7258 SERIES FOR THIS PART WITH CRIMP FOR 22-26 AWG. WIRE.  
 7. CRIMP FOR 18 TO 20 GA. WIRE WITH MAX. INSULATION DIA. OF .100/(2.79),  
 STRIP LENGTH OF .125/.100 / (3.18/2.54)  
 8. DIMENSIONS GIVEN ACROSS CENTERLINES ARE SYMMETRICAL ABOUT  
 THOSE CENTERLINES WITHIN HALF THE TOTAL TOLERANCE.  
 9. THIS PART CONFORMS TO CLASS B REQUIREMENTS OF COSMETIC SPECIFICATION PS-45499-002.  
 10. ALTERNATE GEOMETRY PRESENT ON SOME PART NUMBERS. SEE SHEET 2.  
 11. TEXT ON PART IS FOR REFERENCE ONLY. TEXT AND TEXT LOCATION MAY VARY  
 DEPENDING ON PART NUMBER AND/OR TOOL.



PAPER  
INTERLEAF

SYMBOLS										THIS DRAWING CONTAINS INFORMATION THAT IS PROPRIETARY TO MOLEX ELECTRONIC TECHNOLOGIES, LLC AND SHOULD NOT BE USED WITHOUT WRITTEN PERMISSION									
DIMENSION UNITS					SCALE					CURRENT REV DESC: NOTE 4 UPDATED									
IN/MM					1:1														
GENERAL TOLERANCES (UNLESS SPECIFIED)																			
4 PLACES ±					±					EC NO: 605479									
3 PLACES ±					± 0.01					DRWN: SS06 2018/09/17									
2 PLACES ±					± 0.25 ± 0.015					CHK'D: ISHWARG 2018/10/05									
1 PLACE ±					± 0.36 ±					APPR: ISHWARG 2018/10/05									
0 PLACES ±					±					INITIAL REVISION:									
ANGULAR TOL ± 0.5°										DRWN: GUZIK 1989/11/15									
DRAFT WHERE APPLICABLE MUST REMAIN WITHIN DIMENSIONS					THIRD ANGLE PROJECTION					APPR: LENZ 1989/11/15									
D-DRAWING			SERIES			MATERIAL NUMBER			CUSTOMER			SHEET NUMBER							
D-SIZE			6838			SEE CHART			GENERAL MARKET			1 OF 2							

**molex**

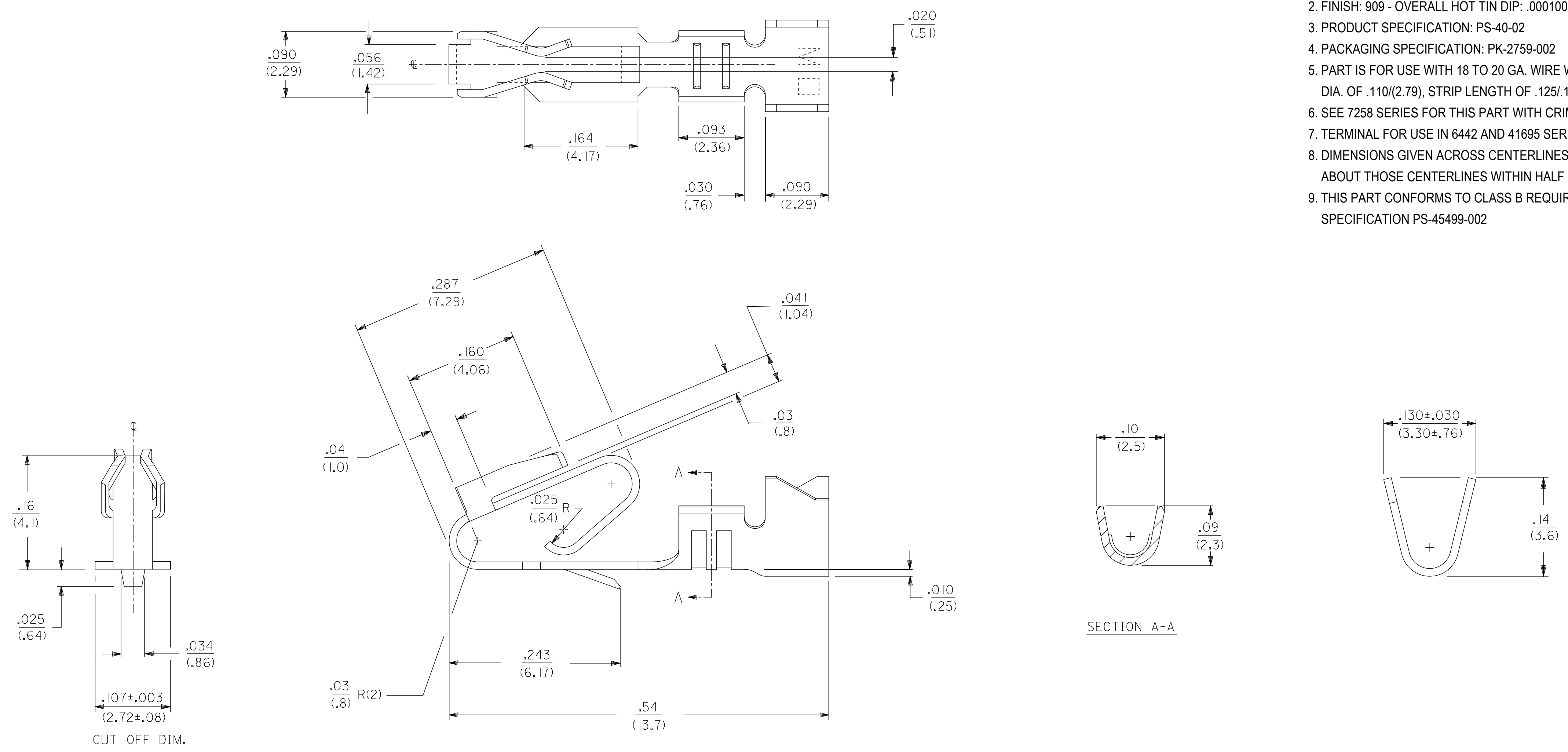
TRIFURCON TERMINAL  
 CRIMP TYPE, .156 CENTERS 18 TO 20 AWG WIRE

PRODUCT CUSTOMER DRAWING

DOCUMENT NUMBER: **SD-6838**  
 DOC TYPE: PSD  
 DOC PART: 001  
 REVISION: AT



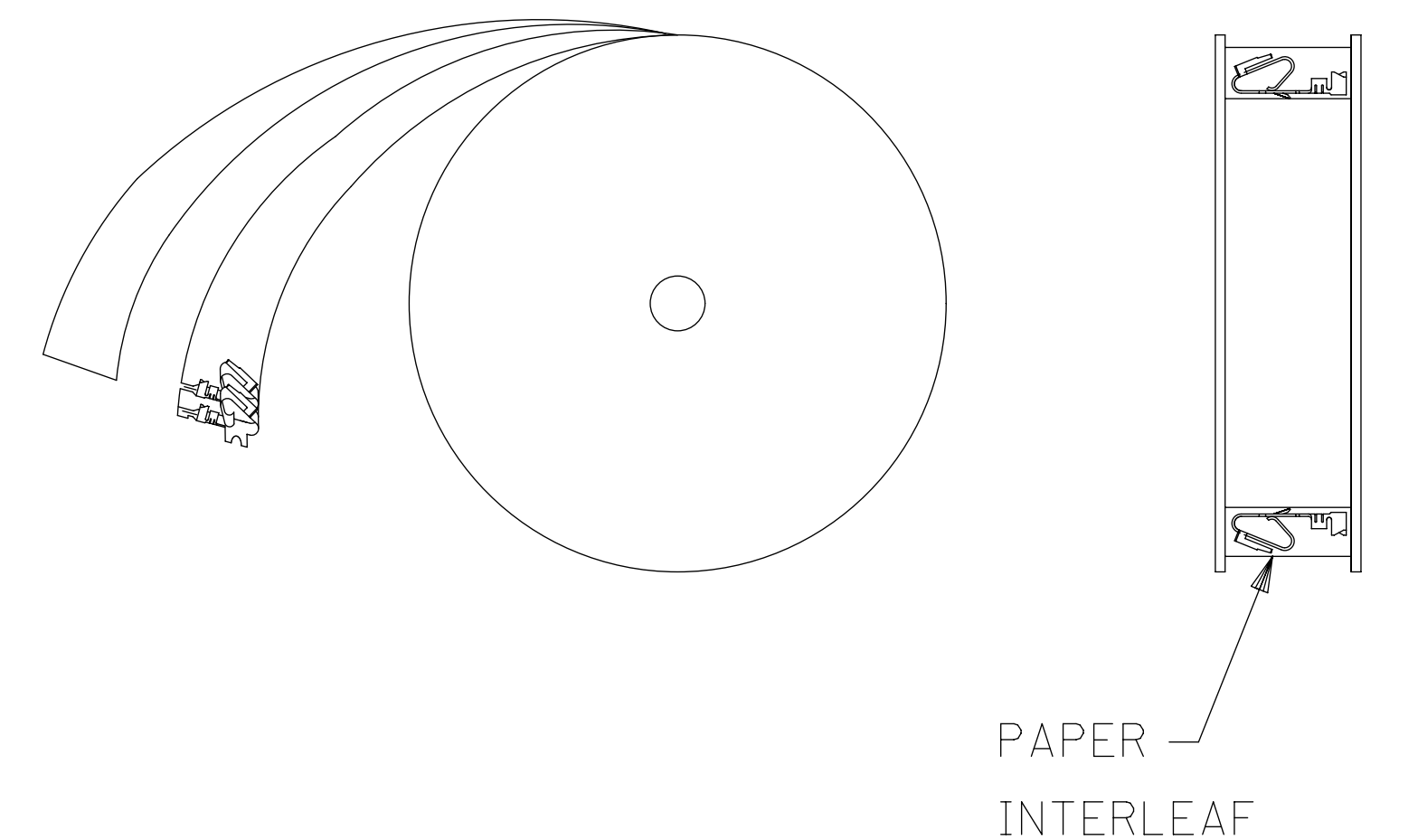
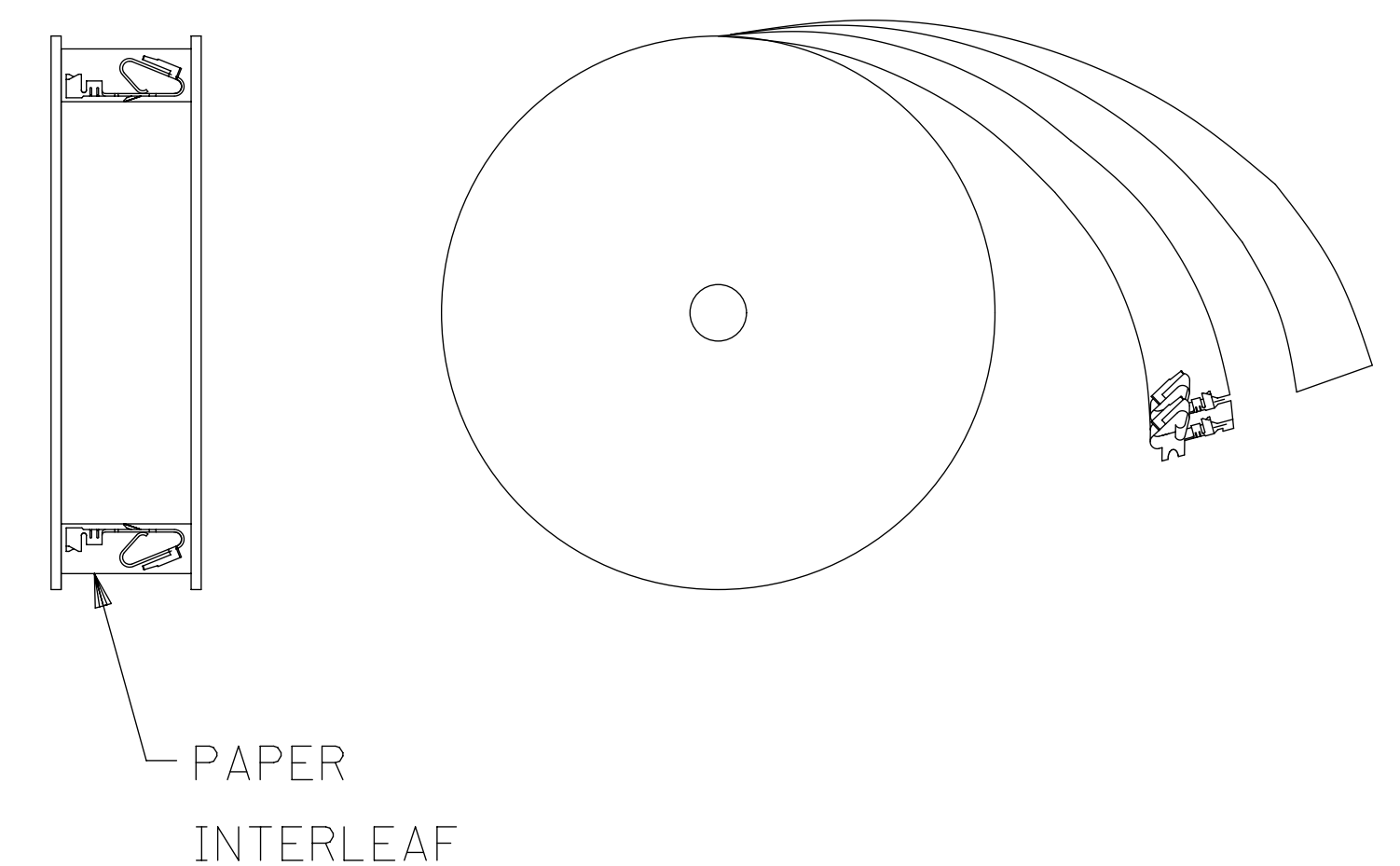
- NOTES:
1. MATERIAL: SEE LEGEND
  2. FINISH: 909 - OVERALL HOT TIN DIP: .000100/(0.00254) MIN.
  3. PRODUCT SPECIFICATION: PS-40-02
  4. PACKAGING SPECIFICATION: PK-2759-002
  5. PART IS FOR USE WITH 18 TO 20 GA. WIRE WITH MAX. INSULATION DIA. OF .110/(2.79), STRIP LENGTH OF .125/100 / (3.18/2.54)
  6. SEE 7258 SERIES FOR THIS PART WITH CRIMP FOR 22-26 AWG. WIRE
  7. TERMINAL FOR USE IN 6442 AND 41695 SERIES HOUSINGS
  8. DIMENSIONS GIVEN ACROSS CENTERLINES ARE SYMMETRICAL ABOUT THOSE CENTERLINES WITHIN HALF THE TOTAL TOLERANCE
  9. THIS PART CONFORMS TO CLASS B REQUIREMENTS OF COSMETIC SPECIFICATION PS-45499-002



LEGEND: 6838-\*(P909)\*  
 MATERIAL: (27)/.0106 THK  
 BLANK=BRASS  
 WINDING  
 BLANK= PER DETAIL B  
 FORM  
 BLANK= CHAIN  
 PLATING PER SDES-88  
 SEE NOTE 2

WINDING DETAIL "A"

WINDING DETAIL "B"



THIS DRAWING CONTAINS INFORMATION THAT IS PROPRIETARY TO MOLEX ELECTRONIC TECHNOLOGIES, LLC AND SHOULD NOT BE USED WITHOUT WRITTEN PERMISSION									
SYMBOLS		DIMENSION UNITS		SCALE		CURRENT REV DESC: NOTE 4 UPDATED			
▽ = 0	IN/MM	1:1		EC NO: 605479 DRWN: SS06 2018/09/12 CHK'D: ISHWARG 2018/10/05 APPR: ISHWARG 2018/10/05 INITIAL REVISION: DRWN: JJS 2004/07/29 APPR: YM 2004/07/29					
▽ = 0	GENERAL TOLERANCES (UNLESS SPECIFIED)								
▽ = 0		MM	INCH						
▽ = 0	4 PLACES	±	±						
▽ = 0	3 PLACES	±	± 0.01						
▽ = 0	2 PLACES	± 0.25	± 0.015						
▽ = 0	1 PLACE	± 0.36	±						
▽ = 0	0 PLACES	±	±						
▽ = 0	ANGULAR TOL		± 0.5°	DRAFT WHERE APPLICABLE MUST REMAIN WITHIN DIMENSIONS THIRD ANGLE PROJECTION D-SIZE 6838 MATERIAL NUMBER 50291639 CUSTOMER GENERAL MARKET SHEET NUMBER 1 OF 1					
▽ = 0	DRAFT WHERE APPLICABLE MUST REMAIN WITHIN DIMENSIONS								
▽ = 0	THIRD ANGLE PROJECTION								
DOCUMENT STATUS		P1	RELEASE DATE	2018/10/05	09:56:25				

**molex**

TRIFURCON TERMINAL  
 CRIMP TYPE, .156 CENTERS 18 TO 20 AWG WIRE

PRODUCT CUSTOMER DRAWING

DOCUMENT NUMBER: SD-6838-001  
 DOC TYPE: PSD  
 DOC PART: 001  
 REVISION: C1