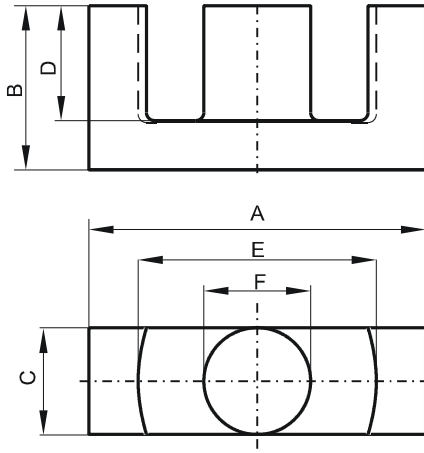


Specification for:

0R45959EC

110 Delta Drive
Pittsburgh, PA 15238
Phone: 412/696-1333
Fax: 412/696-0333
Email: magnetics@spang.com

DIMENSIONS



(mm)	Nominal:	Tol. min.:	Tol. max.:
A	59.8	-1.3	+ 1.3
B	31.0	-0.2	+ 0.2
C	21.65	-0.45	+ 0.45
D	22.1 MIN		
E	44.7	-1.09	+ 1.09
F	21.65	-0.45	+ 0.45
Eff. Parameters			
Ae mm ²	Amin mm ²	le mm	Ve mm ³
368.0	360.0	139.0	51500

INDUCTANCE

AL value (nH)	Test conditions
Nom: 5747 Min.: 4310	10 kHz, < 0.5 mT, 25 °C

MARKING

0R45959EC PXXXXX

CORE LOSSES

P _i max	Test conditions
85 mW/cm ³ (4.352 W/set)	100 kHz, 100 mT, 100 °C
550 mW/cm ³ (28.16 W/set)	100 kHz, 200 mT, 100 °C

NOTE

Spec. modifications	Previous	Revised
2005-06-22	LOSSES:GENERAL R MATERIAL	LOSSES: DETAIL AS INDICATED