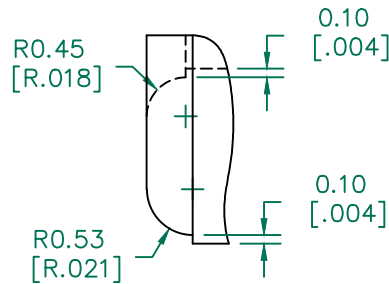


SEE DETAIL "A"

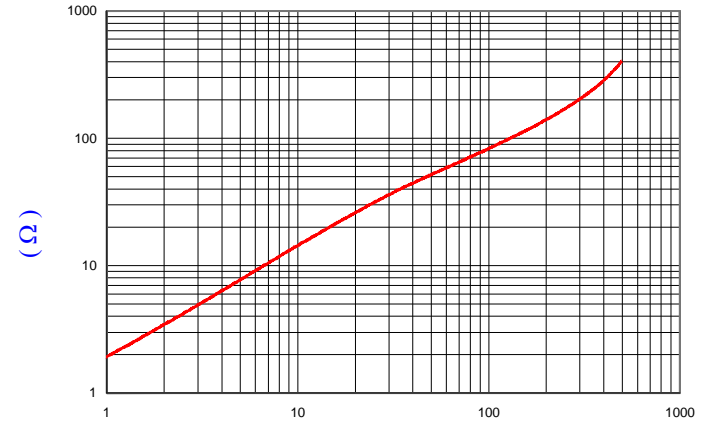
RoHS



DETAIL "A"
CHAMFER

IMPEDANCE (Z)			
Frequency	25 MHz	100 MHz	300 MHz
Nominal (REF)	31 Ω	83 Ω	199 Ω
Minimum	- Ω	66 Ω	- Ω

Z vs. FREQUENCY
(REF. ONLY)



FREQUENCY (MHz)

AGILENT E4991A Impedance/Material Analyzer
HP 16092A Test Fixture, REF# 5900

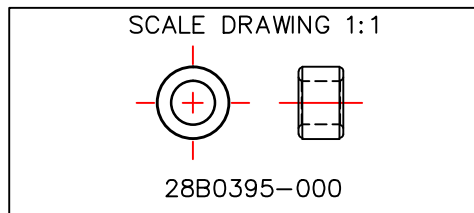
FERRITE CORE DIMENSIONS (SPEC):mm [Inches]

A	10.01 [.394]	\pm	0.20 [.008]
B	5.97 [.235]	\pm	0.15 [.006]
C	6.17 [.243]	\pm	0.13 [.005]

WEIGHT/1000 1.52 kgs [3.36 Lbs]

NOTES: UNLESS OTHERWISE SPECIFIED

1. COSMETIC SPECIFICATION REFER TO WI-QA-038.



DIMENSIONS ARE IN mm [INCHES].				This print is the property of Laird Tech. and is loaned in confidence subject to return upon request and with the understanding that no copies shall be made without the written consent of Laird Tech. All rights to design or invention are reserved.				
REV	DESCRIPTION	DATE	INT					
F	CHANGE CHAMFER AND TOOL	12/28/17	QIU	PROJECT/PART NUMBER: 28B0395-000		REV F	PART TYPE: FERRITE CORE	DRAWN BY: DTR
E	UPDATED LOGO ADD NOTE	07/31/17	QIU					
D	ADD Z CURVE AND Z SPECS	09/18/07	JRK					
C	REACTIVATE PRINT AND UPATE PRINT FORMAT AND UPDATE COMPANY LOGO	08/23/07	TMB					
B	UPDATE PRINT FORMAT & PART PROFILE	05/31/02	TMB					
A	ORIGINAL DRAFT	06/25/98	DTR	DATE: 06/25/98	SCALE: 3:1	MATERIAL: Ferrite		
REV	DESCRIPTION	DATE	INT	CAD # 28B0395-000-F	TOOL # B0395A			