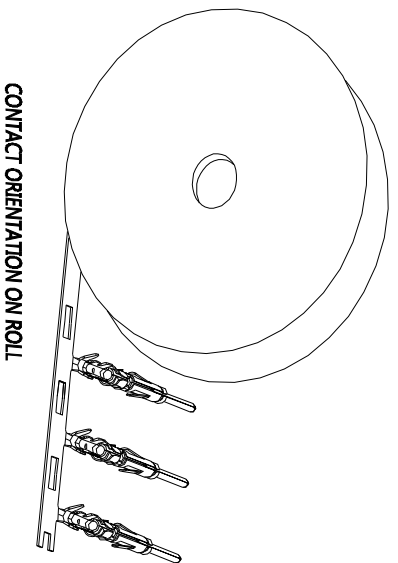


REVISIONS				
REV	ECO	DESCRIPTION	DATE	BY APPR
B1	-	RELEASED DRAWING	AUG-18-2014	BEN TOMMY



NOTES : (UNLESS OTHERWISE SPECIFIED)  
 1. MATERIAL :

- 1.1. CONTACT BODY : COPPER ALLOY.
- 1.2. OUTER SPRING : STAINLESS STEEL.

2. SPECIFICATIONS :

- 2.1 CURRENT RATING : 5A MAX.
- 2.2 TERMINATION TYPE : CRIMPING.
- 2.3 WIRE RANGE : 30~28AWG.
- 2.4 WIRE INSULATION DIA(MAX) :  $\varnothing 2.6\text{mm}$ .

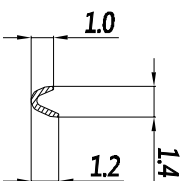
3. ROHS COMPLIANT.

4. ALL DIMENSIONS ARE FOR REFERENCE USE ONLY.

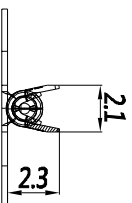
5. AVAILABLE TOOLS :

- 5.1 HAND CRIMPER : MFX-3954.
- 5.2 CRIMP APPLICATOR : MFX-3957.
- 5.3 EXTRACTION TOOL : QXR120.

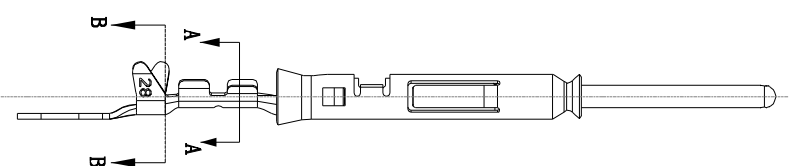
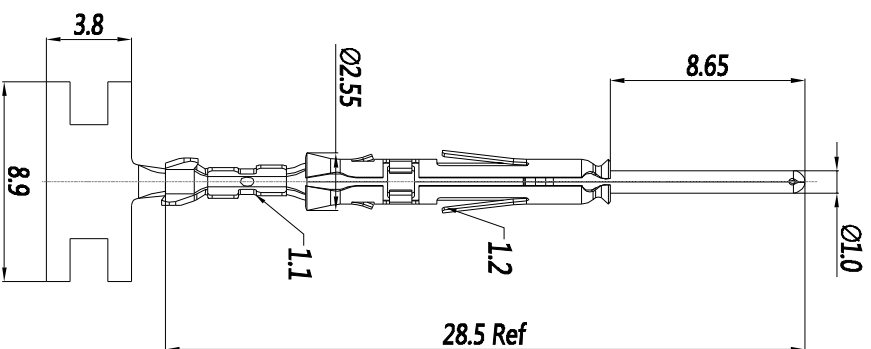
P/N	CONTACT PLATING(MATING AREA)
SP28W1T	TIN PLATING OVER NICKEL.
SP28W1F	GOLD FLASH PLATING OVER NICKEL.
SP28W1G5	5 $\mu$ "GOLD PLATING OVER NICKEL.
SP28W1G10	10 $\mu$ "GOLD PLATING OVER NICKEL.
SP28W1G15	15 $\mu$ "GOLD PLATING OVER NICKEL.
SP28W1G30	30 $\mu$ "GOLD PLATING OVER NICKEL.



SECTION A-A



SECTION B-B



QUANTITY	PART NUMBER	DESCRIPTION	ITER

**MATERIALS LIST**

SIGNATURES	DATE
DRAWN: BBI	11/27/11
DESIGNED: BBI	
ENGINEER: BBI	
APPROVAL: BBI	
CUSTOMER: BBI	

UNLESS OTHERWISE SPECIFIED 1) ALL DIMENSIONS ARE IN MILLIMETERS. 2) TOLERANCES ARE AS SHOWN. 3) PL: DEC 20 08 4) FIN: DEC 20 08 5) HOLE REFERENCE = $\Delta$	THIS DRAWING IS UNCONTROLLED SPECIFICATIONS AND PERFORMANCE DATA THE DRAWING AND THE INFORMATION CONTAINED HEREIN ARE THE PROPERTY OF AMPHENOL REPRODUCTION IN ANY MANNER WITHOUT WRITTEN PERMISSION IS PROHIBITED. ALL RIGHTS RESERVED.	ECO-MATE PIN CONTACT, STAMPED,30-28AWG, SIZE 20.	SIZE TYPE B C-	DWG NO. SP28W1XX	REVISION B1
PROCESS SPECIFICATIONS: NEXT ASST:			SCALE: NONE	SHEET 1	OF 1

**Amphenol**

Shine Systems - www.amphenol-shine.com  
 44724 Monkey Drive  
 Clinton Township, MI 48038

ECO-MATE PIN CONTACT,  
 STAMPED,30-28AWG, SIZE 20.

SCALE: NONE	SHEET 1	OF 1
-------------	---------	------