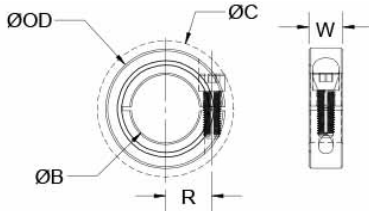




MCL-8E-P

Ruland MCL-8e-P, 1/2" International Shaft Collar, Plastic, One-Piece Clamp Style, 30mm OD, 11mm Width



Description

Ruland MCL-8E-P is a one-piece shaft collar with a 0.5000" bore, 30mm OD, and 11mm width. It is an international series shaft collar that has metric hardware and dimensions with inch bores. The clamp style design does not mar the shaft, is easy to remove, and is indefinitely adjustable. MCL-8E-P is commonly used for guiding, spacing, stopping, mounting, and component alignment. Equipment manufacturers benefit from the tightly controlled face to bore perpendicularity (TIR of ? .05mm). Perpendicularity is critical for alignment when the shaft collar is used as a load bearing face, mechanical stop, or for mounting components such as gears or bearings. Proprietary processes have been developed by Ruland to maintain superior fit, finish, and holding power. MCL-8E-P is stamped with the Ruland name and bore size for ease of identification. Forged screws test beyond DIN 912 12.9 standards to ensure maximum holding power. MCL-8E-P is manufactured from solid bar stock sourced from select North American mills and machined to a fine burr free finish. Ruland uses engineered acetal plastic for a consistent finish. MCL-8E-P is RoHS3 and REACH compliant and manufactured in our Marlborough, MA factory under strict controls using proprietary processes.

Product Specifications

Bore (B)	0.5000 in	Bore Tolerance	+0.0020 in / +0.0005 in
Outer Diameter (OD)	30 mm	Clearance Diameter (C) MAX	33.7 mm
Width (W)	11 mm	Width Tolerance	+0.076 mm / -0.254 mm
Recommended Shaft Tolerance	+0.0000 in / -0.0005 in	Forged Clamp Screw	M4
Screw Material	18-8 300 Series Stainless Steel	Hex Wrench Size	3.0 mm
Screw Finish	Bright	Seating Torque	1.1 Nm
Screw Location (R)	11.00 mm	Number of Screws	1 ea
Material Specification	Acetal Bar	Finish Specification	Plain
Manufacturer	Ruland Manufacturing	Country of Origin	USA
Temperature	-10°F to 185°F (-23°C to 85°C)	Weight (lbs)	0.022500
UPC	634529114926	Tariff Code	8483.60.8000
UNSPC	31162811		
Note 1	Performance ratings are for guidance only. The user must determine suitability for a particular application.		
Note 2	No backslot		
Prop 65	⚠ WARNING This product can expose you to chemicals including Nickel (metallic) and Formaldehyde, known to the State of California to cause cancer. For more information go to www.P65Warnings.ca.gov .		

Installation Instructions

1. Use the MCL-8E-P international series shaft collar as it is received.
2. Wipe the bore clean.
3. Apply a thin coat of light oil to the shaft.
4. Place the collar onto the desired shaft location and tighten it using a 3.0 mm hex wrench until a slight resistance is felt.
5. Wring collar into its final position and tighten the screw to the full recommended seating torque of 1.1 Nm using a 3.0 mm torque wrench.