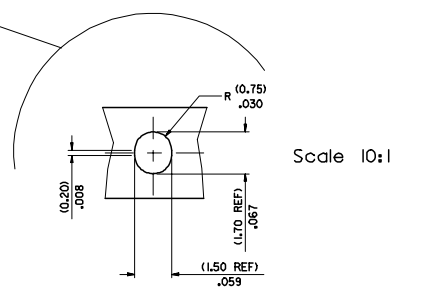
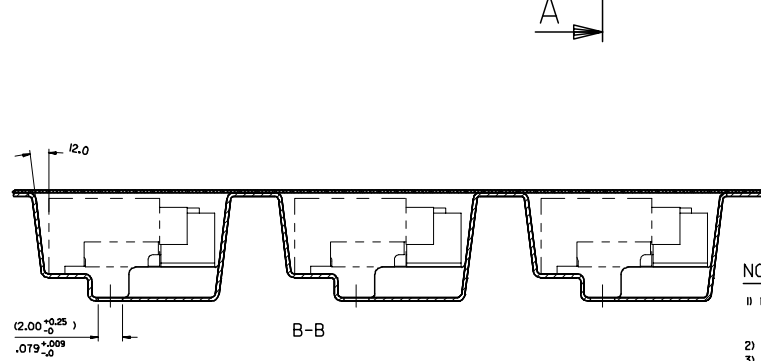


DIRECTION OF UNREELING →



REFERENCE ONLY

99044-4006

(360.0) MAX 14.17

Ø(100.0) REF 3.94

(150.4) MAX 1.98

(Ø 3.00 ± 0.25) .512 ± 0.009

(44.40 ± 0.20) 1.748 ± 0.005

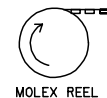
REEL DIMENSIONS
NOT TO SCALE

(500) PIECES ON A REEL

(THREE) REELS / CARDBOARD BOX (98707-0007)

(1500) PIECES IN THE CARDBOARD BOX

TO CUSTOMER ASSEMBLY MACHINE →



COMPONENT	DESCRIPTION
90811-2001	MOBILE PHONE I/O CONNECTOR

- NOTES:
- MATERIAL :
CARRIER TAPE : VOLUME CONDUCTIVE POLYCARBONATE , (0.37) .014 REF THICK , BLACK
COVER TAPE : COLD SEAL POLYESTER , (0.06) .002 REF THICK , TRANSPARENT
 - PITCH TOLERANCE OVER ANY 10 PITCHES ±(0.2) .008
 - PEEL FORCE OF THE COVER TAPE IS 0.1N TO 1.0N
AT A MAXIMUM PEEL SPEED OF (300) 1.81mm/mIn ±10%
 - REFERENCE TO IEC 286-3 EXCEPT WHERE SPECIFIED

QUALITY SYMBOLS	GENERAL TOLERANCES (UNLESS SPECIFIED)		DIMENSION STYLE		SCALE	DESIGN UNITS	THIRD ANGLE PROJECTION	
	mm	INCH	MM/IN	MM/IN	S:1	METRIC		
▽=0	4 PLACES ±	±	DRAWN BY	DATE	TITLE	BLISTER PACKAGING FOR MOBILE PHONE HANDSET		
▽=0	3 PLACES ±	±	TM	1996/05/10				
	2 PLACES ± 0.10	±	CHECKED BY	DATE				
	1 PLACE ± 0.2	±	MW	1996/05/10				
	ANGULAR ± .5°		APPROVED BY	DATE		MOLEX INCORPORATED		
	DRAFT WHERE APPLICABLE MUST REMAIN WITHIN DIMENSIONS		MW	1996/05/10				
	SEE CHART		MATERIAL NO.	DOCUMENT NO.	SHEET NO.			
	THIS DRAWING CONTAINS INFORMATION THAT IS PROPRIETARY TO MOLEX INCORPORATED AND SHOULD NOT BE USED WITHOUT WRITTEN PERMISSION				1 OF 3			