



HEAVYPORT programming ports

A new standard in safety and convenience

HEAVYPORT programming ports A new standard in safety and convenience

Phoenix Contact HEAVYPORT, also referred to as a programming port, is deployed on the cabinet wall, and it allows software modifications to be made without opening the control panel door. The protected port eliminates downtime resulting from opening any enclosure and reduces risk from exposure to environmental conditions.

HEAVYPORT utilizes our range of HEAVYCON B-Series panel mounting bases, making it simple to install alongside our other heavy-duty industrial through-panel solutions without the need to acquire additional tooling.



HEAVYPORT programming ports:

- ✓ Eliminate downtime resulting from extra safety procedures required by opening the enclosure
- ✓ Reduce the risk of damage to the internal components of the enclosure by minimizing exposure to environmental conditions
- ✓ Eliminate the risk of arc flash and other safety concerns associated with an open panel door in harsh environments
- ✓ Provide power to the laptop safely during long updates
- ✓ Access custom configurations through the Phoenix Contact Solution Center

Find them on the website under:

www.phoenixcontact.com/HEAVYPORT



Most popular HEAVYPORT configurations

While HEAVYPORT is ideal for a wide variety of applications, these are some of our most frequently ordered configurations.



1415783 (H1X:AC)



1415760 (H1X:C5FF)



1415765 (H1X:D1MF)



1415764 (H4X:2C5FF)



1415779 (H4X:2UCFM:AC)



1415780 (H4X:2U3FF:D3FF)



1415758 (H4X:C5FF:AC)



1415781 (H4X:C5FF:AC3)



1415759 (H4X:CSFF:AC3)



1415763 (H4X:D1FM:C5FF:AC)



1415761 (H5S:C5FF:GF3)



1415774 (H4X:U2FF:C5FF:AC)

Descriptions of our most popular HEAVYPORT configurations

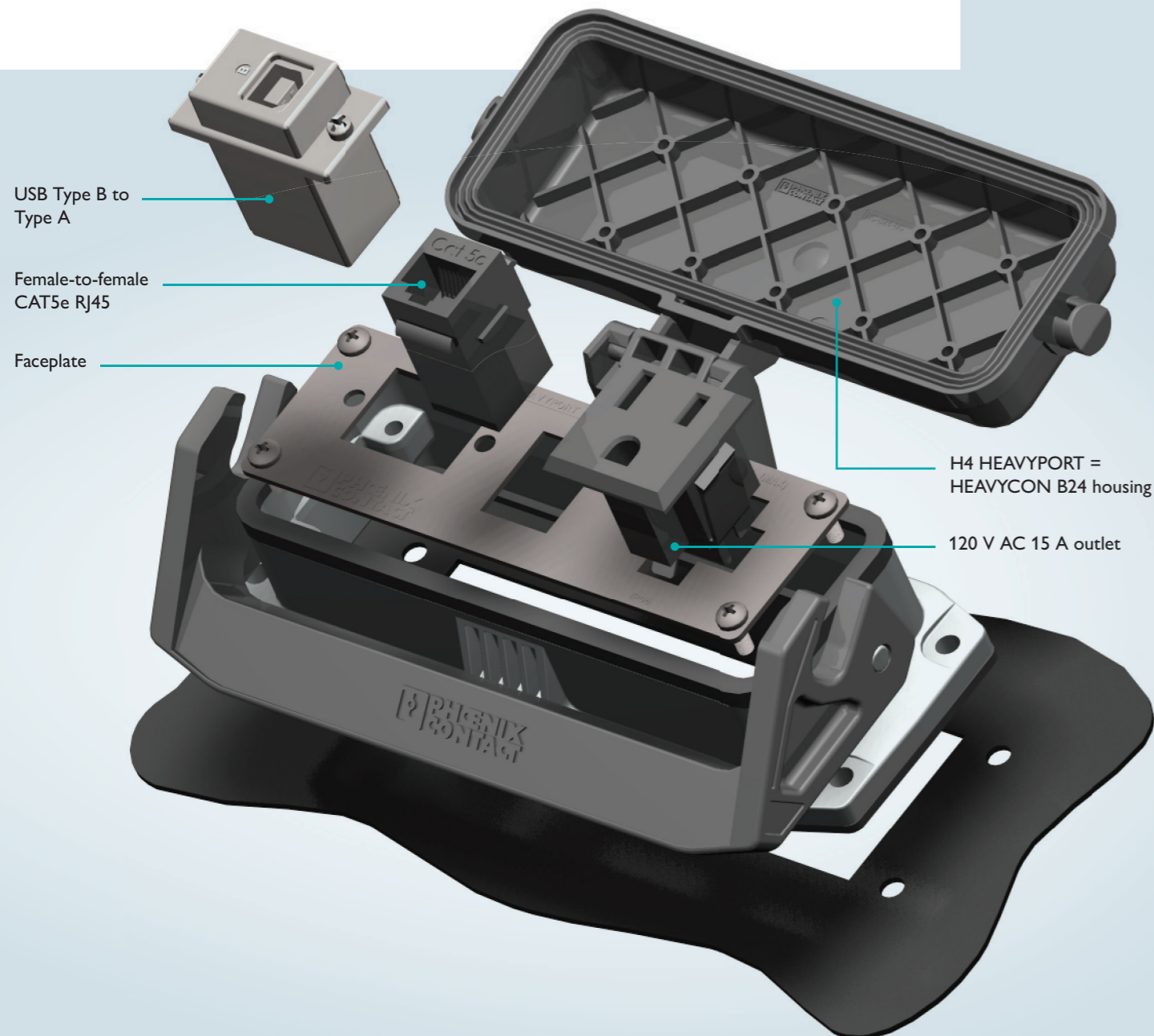
Article	Description	Component code	Front interface	Rear interface
1415783	H1X:AC	AC	120VAC, 15 A outlet	Slip-on/solder tabs
1415760	H1X:C5FF	C5FF	Cat5e RJ45 female	Cat5e RJ45 female
1415765	H1X:D1MF	D1MF	9-Pin D-SUB male	9-Pin D-SUB female
1415764	H4X:2C5FF	2C5FF	2x Cat5e RJ45 female	2x Cat5e RJ45 female
1415779	H4X:2UCFM:AC	2UCFM	2x USB type A female	2x USB 10' cable with type A male plug
		AC	120VAC, 15 A outlet	Slip-on/solder tabs
1415780	H4X:2U3FF:D3FF	2U3FF	2x USB type A female	2x USB type A female
		D3FF	15-Pin D-SUB (high density) female	15-Pin D-SUB (high density) female
1415758	H4X:C5FF:AC	C5FF	Cat5e RJ45 female	Cat5e RJ45 female
		AC	120VAC, 15 A outlet	Slip-on/solder tabs
1415781	H4X:C5FF:AC3	AC3	Cat5e RJ45 female	Cat5e RJ45 female
		C5FF	120VAC, 15 A outlet	Slip-on/solder tabs
		AC3	3-Amp Breaker Switch	Slip-on/solder tabs
1415759	H4X:CSFF:AC3	CSFF	Cat5e (shielded) RJ45 female	Cat5e (shielded) RJ45 female
		AC3	120VAC, 15 A outlet	Slip-on/solder tabs
		CSFF	3-Amp Breaker Switch	Slip-on/solder tabs
1415763	H4X:D1FM:C5FF:AC	D1FM	9-Pin D-SUB female	9-Pin D-SUB male
		C5FF	Cat5e RJ45 female	Cat5e RJ45 female
		AC	120VAC, 15 A outlet	Slip-on/solder tabs
1415761	H5S:C5FF:GF3	C5FF	Cat5e RJ45 female	Cat5e RJ45 female
		GF3	Duplex outlet 120VAC, 20 A with 5 A GFCI	Screw terminals
		GF3	3-Amp Breaker Switch	Slip-on/solder tabs
1415774	H4X:U2FF:C5FF:AC	U2FF	USB type B female	USB type A female
		C5FF	Cat5e RJ45 female	Cat5e RJ45 female
		AC	120VAC, 15 A outlet	Slip-on/solder tabs

Additional standard configurations

Article	Description	Component code	Front interface	Rear interface
1415787	H1X:2UCFM	2UCFM	2x USB type A female	2x USB 10' cable with type A male plug
1415771	H1X:C5FF:TCFF	C5FF	Cat5e RJ45 female	Cat5e RJ45 female
		TCFF	RJ11-RJ12 female	RJ11/RJ12 male
1415777	H1X:D1FT	D1FT	9-Pin D-SUB female	9-pos terminal block
1415767	H1X:U3FF	U3FF	USB type A female	USB type A female
1046940	H3X:C5FF:2U3FF	C5FF	Cat5e RJ45 female	Cat5e RJ45 female
		2U3FF	2x USB type A female	2x USB type A female
1415768	H3X:D1MM:AC	D1MM	9-Pin D-SUB male	9-Pin D-SUB male
		AC	120VAC, 15 A outlet	Slip-on/solder tabs
1415782	H4X:2AC	2AC	2x 120VAC, 15 A outlet	2x Slip-on/solder tabs
1415778	H4X:2D1FF:AC	2D1FF	2x 9-Pin D-SUB female	2x 9-Pin D-SUB female
		AC	120VAC, 15 A outlet	Slip-on/solder tabs
1415775	H4X:4C5FF	4C5FF	4x Cat5e RJ45 female	4x Cat5e RJ45 female
1046942	H4X:C5FF:2UCFM:AC	C5FF	Cat5e RJ45 female	Cat5e RJ45 female
		2UCFM	2x USB type A female	2x USB 10' cable with type A male plug
		AC	120VAC, 15 A outlet	Slip-on/solder tabs
1415786	H4X:C5FF:D1MM:D1FM:2UCFM	C5FF	Cat5e RJ45 female	Cat5e RJ45 female
		D1MM	9-Pin D-SUB male	9-Pin D-SUB male
		D1FM	9-Pin D-SUB female	9-Pin D-SUB male
		2UCFM	2x USB type A female	2x USB 10' cable with type A male plug
1415793	H4X:C5FF:UCFM:AC	C5FF	Cat5e RJ45 female	Cat5e RJ45 female
		UCFM	USB type A female	USB 10' cable with type A male plug
		AC	120VAC, 15 A outlet	Slip-on/solder tabs
1415776	H4X:D1FF:AC	D1FF	9-Pin D-SUB female	9-Pin D-SUB female
		AC	120VAC, 15 A outlet	Slip-on/solder tabs
1415770	H4X:D1FF:C5FF:AC	D1FF	9-Pin D-SUB female	9-Pin D-SUB female
		C5FF	Cat5e RJ45 female	Cat5e RJ45 female
		AC	120VAC, 15 A outlet	Slip-on/solder tabs
1415766	H4X:D1FM:AC	D1FM	9-Pin D-SUB female	9-Pin D-SUB male
		AC	120VAC, 15 A outlet	Slip-on/solder tabs
1415789	H4X:D1FT:AC	D1FT	9-Pin D-SUB female	9-pos terminal block
		AC	120VAC, 15 A outlet	Slip-on/solder tabs
1415788	H4X:D1MM:AC	D1MM	9-Pin D-SUB male	9-Pin D-SUB male
		AC	120VAC, 15 A outlet	Slip-on/solder tabs
1046944	H4X:D2FF:AC	D2FF	15-Pin D-SUB female	15-Pin D-SUB female
		AC	120VAC, 15 A outlet	Slip-on/solder tabs
1415796	H4X:D4FM:AC	D4FM	25-Pin D-SUB female	25-Pin D-SUB male
		AC	120VAC, 15 A outlet	Slip-on/solder tabs
1046945	H5S:3C5FF:D1FF:DP	3C5FF	3x Cat5e RJ45 female	Cat5e RJ45 female
		D1FF	9-Pin D-SUB female	9-Pin D-SUB female
		DP	Duplex outlet 120 VAC, 20 A	Screw terminals
1046947	H5S:3C5FF:GF	3C5FF	3x Cat5e RJ45 female	Cat5e RJ45 female
		GF	Duplex outlet 120 VAC, 20 A with 5 A GFCI	Screw terminals
1415790	H5S:GF	GF	Duplex outlet 120 VAC, 20 A with 5 A GFCI	Screw terminals

HEAVYPORT components

With so many potential variations, it is helpful to understand all of the coding and how HEAVYPORT part descriptions are defined. The following pages explain the description structure and provide details regarding mounting, materials, and component loading.

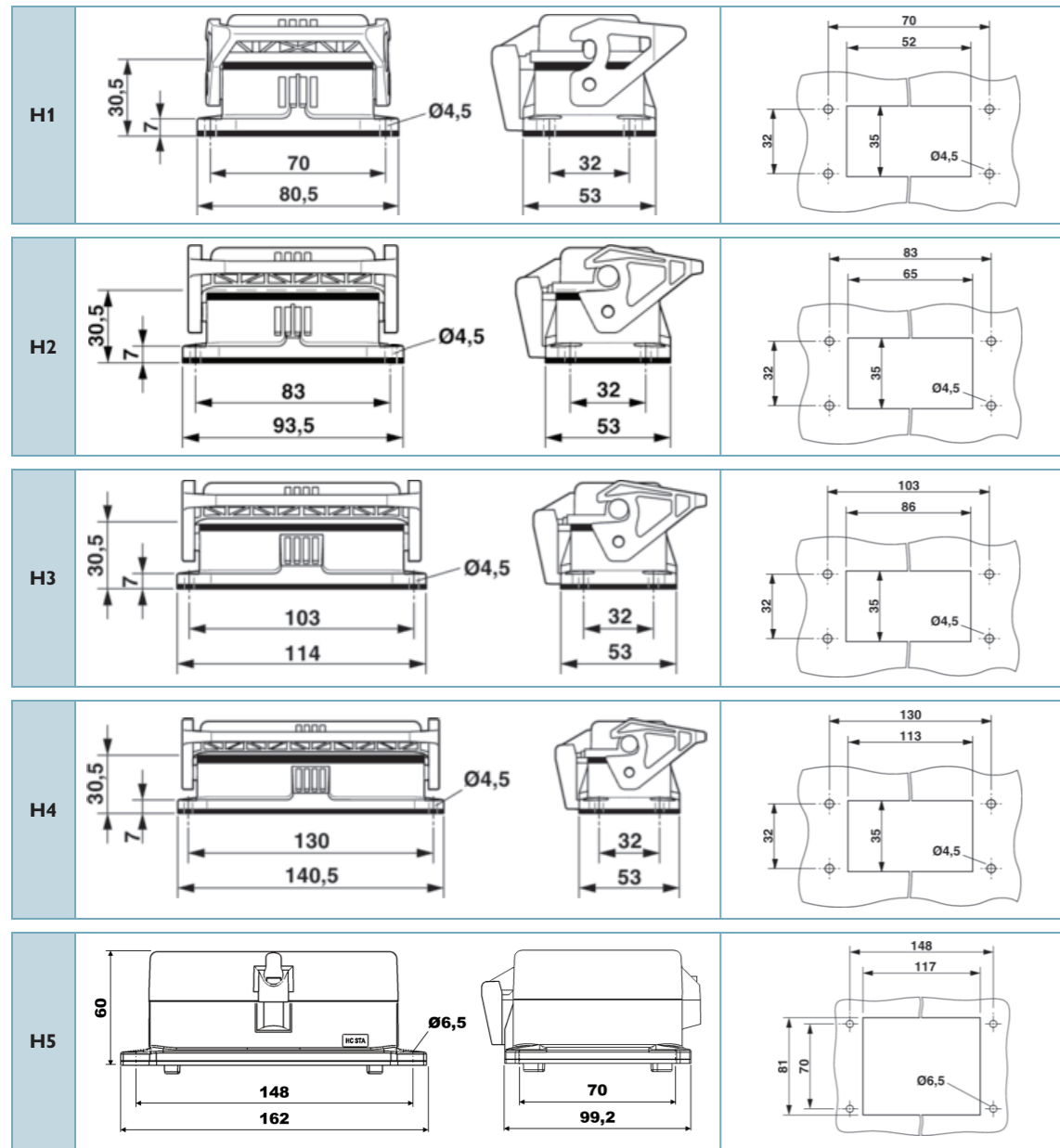


HEAVYPORT description structure

HEAVYPORT programming ports				example: H 4 X :		C5FF:2D1MM:AC3
HEAVYPORT programming ports						
Size / panel knockout						
1 = 52 mm x 35 mm - HEAVYCON B06 base						
2 = 65 mm x 35 mm - HEAVYCON B10 base						
3 = 86 mm x 35 mm - HEAVYCON B16 base						
4 = 113 mm x 35 mm - HEAVYCON B24 base						
5 = 117 mm x 81 mm - HEAVYCON B48 base						
Materials						
S = Screw latch; plastic cover; metal panel mount base						
X = Plastic latch; plastic cover; metal panel mount base						
Z = Special base variations - final component code coded Z###						
Blank = No housing, plate with connectors only						
Components (“:” separates components, “#” preceding component code indicates multiple of same component greater than one)						
RJ connectors		C5 = Cat 5e Ethernet through an RJ45 connector				
		CS = Cat 5e shielded Ethernet through an RJ45 connector				
		TC = RJ11/RJ12 connector for telecommunication				
USB connectors		U2 = USB connector type B/A				
		U3 = USB connector type A/A				
		UC = USB connector type A/cable-A (10' cable)				
D-SUB connectors		D1 = 9-Pin D-SUB connector				
		D2 = 15-Pin D-SUB connector				
		D3 = 15-Pin high-density D-SUB connector				
		D4 = 25-Pin D-SUB connector				
Power outlets		AC = Single 120 V AC outlet (rectangular shape) - 15 A				
		DP = Duplex outlet (two 120 V AC outlets) - 20 A				
		GF = Two 120 V AC outlets with a 5 A max GFCI - 20 A				
Z### = Special base variations						
Component interface - front (follows component code)						
F = Female/Socket						
M = Male/Plug						
Blank = Outlet with no standalone circuit breaker						
3 = 3 Amp standalone circuit breaker - only for use with power outlets						
Component interface - rear (follows component interface front code)						
F = Female/socket						
M = Male/plug						
T = Terminal block						
Blank = Outlet						

HEAVYPORT housing and knockout dimensions

Before mounting your programming port, use the layout below to make sure that you allot the correct amount of space required in your cabinet wall.



HEAVYPORT housing materials

X = Aluminum housing;
plastic cover; plastic
latch

S = Aluminum housing;
plastic cover; screw
latch



Standard components and codes

Individual components					
Component description	Component code	Gender front/rear	Full code	Front	Rear
Cat 5e Ethernet through an RJ45 connector	C5	FF	C5FF		
Cat 5e Shielded Ethernet through an RJ45 connector	CS	FF	CSFF		
RJ11/RJ12 connector for telecommunication	TC	FF	TCFF		
USB connector type B/A	U2	FF	U2FF		
USB connector type A/A	U3	FF	U3FF		
USB connector type A/cable-A (10' cable)	UC	FM	UCFM		
9-pin D-SUB connector	D1	FF	D1FF		
9-pin D-SUB connector	D1	FM	D1FM		
9-pin D-SUB connector with terminal block	D1	FT	D1FT		
9-pin D-SUB connector	D1	MM	D1MM		
9-pin D-SUB connector	D1	MF	D1MF		
15-pin D-SUB connector	D2	FF	D2FF		
15-pin high-density D-SUB connector	D3	FF	D3FF		
25-pin D-SUB connector	D4	FM	D4FM		
Power outlets					
Component description	Outlet code	Full code	Front	Rear	
Single 120 V AC outlet (rectangular shape) - 15 A	AC	AC			
Duplex outlet (two 120 V AC outlets) - 20 A	DP	DP			
Two 120 V AC outlets with a 5 A max. GFCI - 20 A	GF	GF			
3 A circuit breaker (for use with above power outlets)	3	AC3, DP3, or GF3			

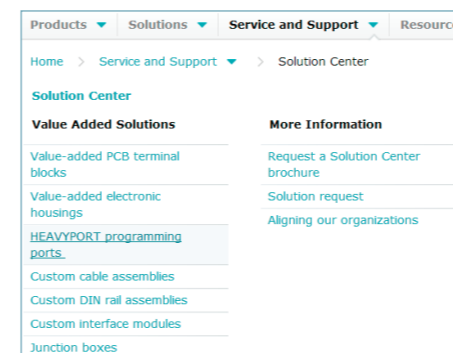
Solution Center Custom HEAVYPORT configurations

If you haven't found the configuration you're looking for, check in with the Phoenix Contact Solution Center.

Although our standard product offerings feature thousands of possibilities, you may not have found the exact configuration your application requires. If that's the case, just tell us what you need!



Visit the HEAVYPORT Solution Center page at: www.phoenixcontact.com/HPSolution



HEAVYPORT Programming Ports selector guide

Individual Components

Quantity	Component Description	Gender Front	Gender Rear	Code	Front
<input type="checkbox"/>	Cat 5e Ethernet through an RJ45 connector	Female	Female	CSFF	
<input type="checkbox"/>	Cat 5e Shielded Ethernet through an RJ45 connector	Female	Female	CSFF	
<input type="checkbox"/>	RJ11/RJ12 connector for telecommunication	Female	Female	TCFF	

Or go to:

- > Service and Support
- > Solution Center
- > HEAVYPORT programming ports

To begin:

Click "Design your own configuration." Then, complete the HEAVYPORT programming port custom-configuration quote request form.

Recombine the currently available components to create a new HEAVYPORT that fits your specific needs.

For special requests:

If you don't see the components or housing that you need, use the "Special Requests" field to tell us about your requirement in more detail.

Ongoing communication with customers and partners worldwide

Phoenix Contact is a global, market leader based in Germany. Our group is known for its future-oriented components, systems, and solutions in the fields of electrical engineering, electronics, and automation.

With a global network reaching across more than 100 countries and 14,500 employees, we can stay in close contact with our customers, something we believe is essential to success. The wide variety of our innovative products makes it easy for our customers to find future-oriented solutions for multiple applications and industries. We especially focus on the fields of energy, infrastructure, process, and factory automation.



You will find our complete product range at:
www.phoenixcontact.com

USA

PHOENIX CONTACT

P.O. Box 4100

Harrisburg, PA 17111-0100

Phone: 800-888-7388

717-944-1300

Technical Service: 800-322-3225

Fax: 717-944-1625

E-mail: info@phoenixcon.com

Website: www.phoenixcontact.com

Canada

PHOENIX CONTACT Ltd.

8240 Parkhill Drive

Milton, Ontario L9T 5V7

Toll Free: 800-890-2820

Phone: 905-864-8700

Fax: 905-864-7900

E-mail: cdinfo@phoenixcontact.ca