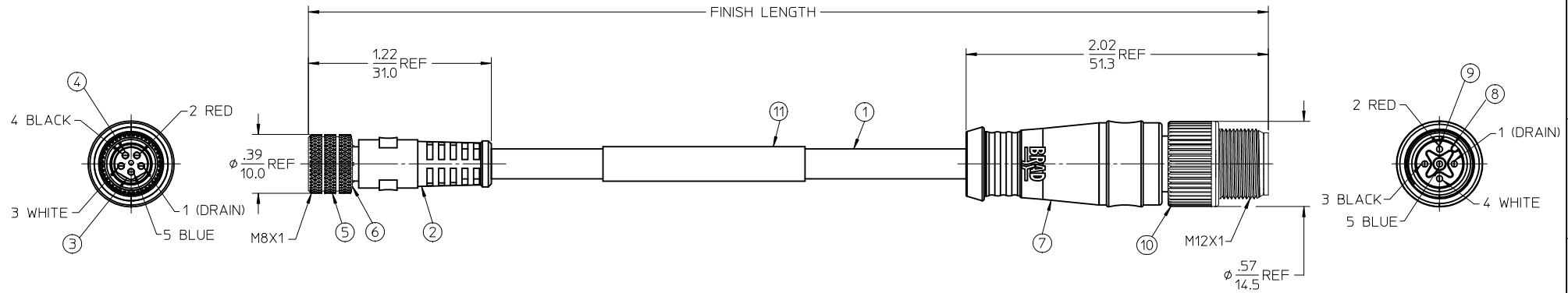
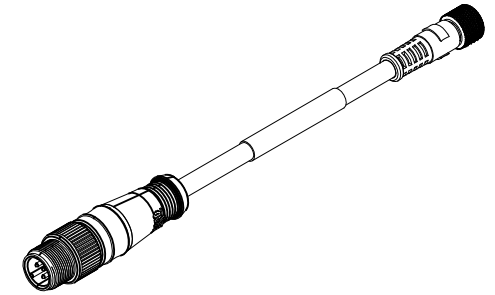


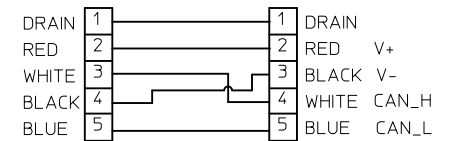
13	12	11	10
MATERIAL	ENG-NUMBER	LENGTH	LENGTH TOL.
1300300010	485030D12M010	1M (3'-4")	+58.7MM -0(+2.31' -0")



NOTES:

- 1.) MATERIAL: SEE TABLE
- 2.) FINISHES: SEE TABLE
- 3.) ELECTRICAL: 60VAC 75VDC, 1.68 AMPS
- 4.) CABLE:
TWO SHIELDED PAIRS
26AWG/ 4C 300VDC
-20 TO +70°C @ 1.68 AMPS
- 5.) IP67
- 6.) ASSEMBLY IS RoHS COMPLIANT

WIRING CONNECTION



11	1	MFG LABEL	PLASTIC FILM	BLACK/YELLOW
10	1	MALE COUPLING NUT	BRASS	NICKEL PLATED
9	5	MALE CONTACT	Cu ALLOY	GOLD PLATED
8	1	MIC 5 POLE MALE INSERT	PUR	BLACK
7	1	OVERMOLD BODY	TPE	GRAY
6	1	O-RING	VITON	RED
5	1	FEMALE COUPLING NUT	BRASS	NICKEL PLATED
4	5	FEMALE CONTACT	Cu ALLOY	GOLD PLATED
3	1	NC 5 POLE FEM. INSERT	PUR	BLACK
2	1	OVERMOLD BODY	TPE	GRAY
1	1	CABLE, 4P, 26 AWG	PVC JACKET	GRAY
ITEM	QTY	DESCRIPTION	MATERIAL	FINISH

CREATE DOC. EC NO: WNA2010-0452 DRWN:RUPERT 2010/01/25 CHKD:B. WOODMAN 2010/01/29 APPR: JFMURPHY 2010/01/29	QUALITY SYMBOLS	GENERAL TOLERANCES (UNLESS SPECIFIED)	DIMENSION STYLE	SCALE	DESIGN UNITS	THIRD ANGLE PROJECTION
	▽=0	mm INCH	IN/MM	2:1	INCH	
	▽=0	4 PLACES ± --- ± ---	DRAWN BY DATE	TITLE		
		3 PLACES ± --- ± ---	CHECKED BY DATE	NC STR 5P FEMALE TO MIC STR 5P MALE DEVICENET		
	2 PLACES ± --- ± ---	APPROVED BY DATE	MOLEX INCORPORATED			
	1 PLACE ± --- ± ---	MATERIAL NO.	DOCUMENT NO.			
	ANGULAR ±1/2°	SEE CHART		SD-130030-010		SHEET NO. 1 OF 1
		DRAFT WHERE APPLICABLE MUST REMAIN WITHIN DIMENSIONS		THIS DRAWING CONTAINS INFORMATION THAT IS PROPRIETARY TO MOLEX INCORPORATED AND SHOULD NOT BE USED WITHOUT WRITTEN PERMISSION		