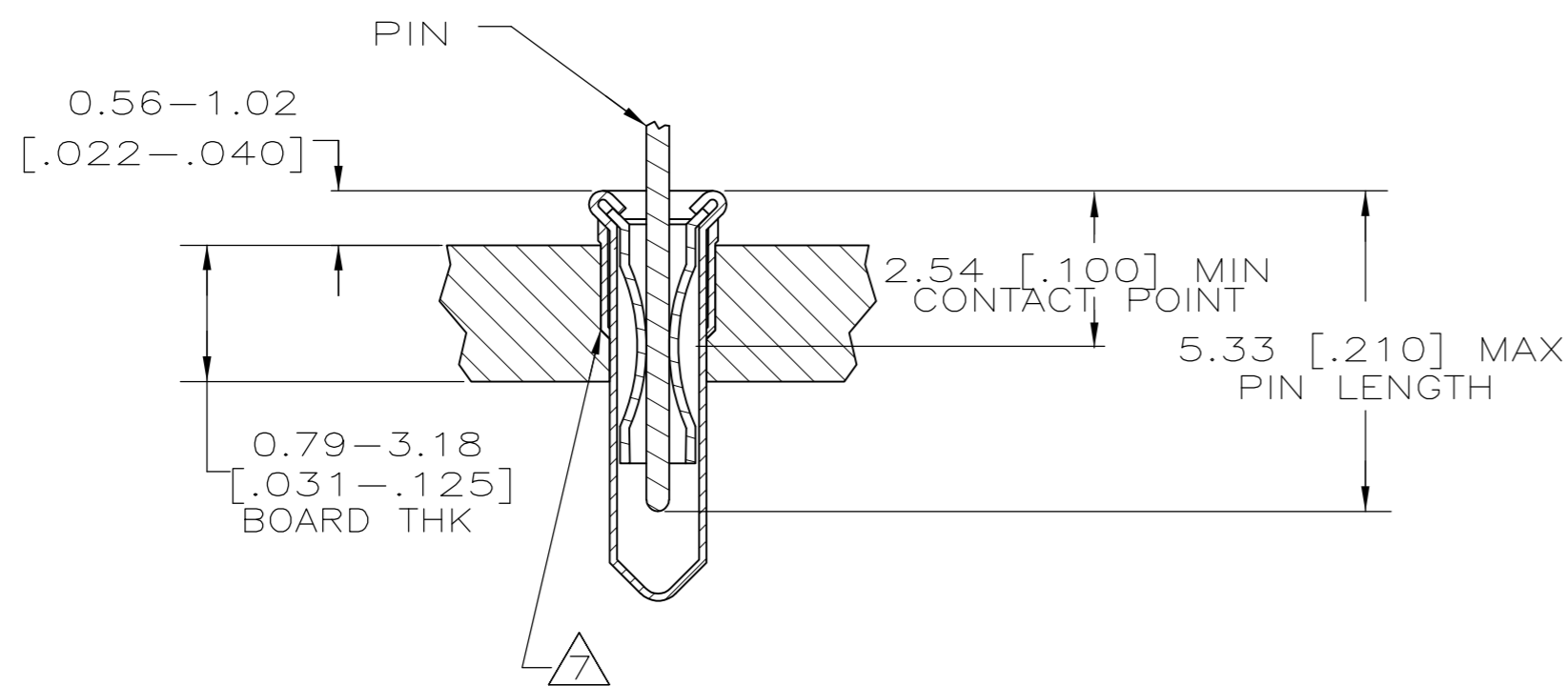
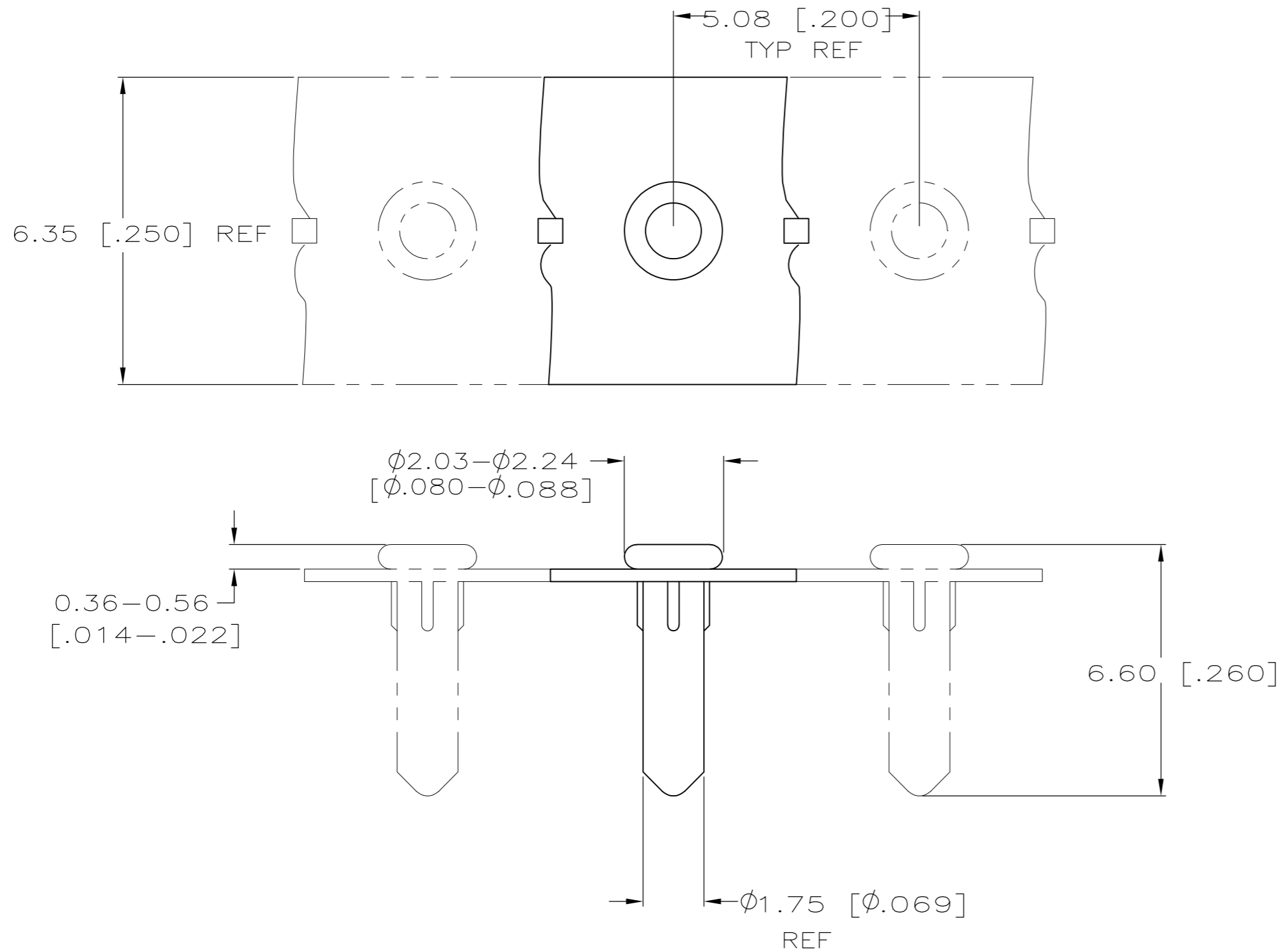


THIS DRAWING IS UNPUBLISHED. RELEASED FOR PUBLICATION
 © COPYRIGHT - By - ALL RIGHTS RESERVED.

LOC		DIST		REVISIONS					
AG		53		P	LTR	DESCRIPTION	DATE	DWN	APVD
				B1		REV PER ECO-14-003120	07MAR2014	AP	AS



- 1 MATERIAL:
EYELET- COPPER PER ASTM B 152.
SPRING- BERYLLIUM-COPPER PER ASTM B 194.
- 2 TIN PLATE PER ASTM B 545, 0.00254 [.000100] MINIMUM THICKNESS.
- 3 NICKEL UNDERPLATE ALL OVER, MATING SURFACE PLATED TO MEET PERFORMANCE REQUIREMENTS OF TYCO PRODUCT SPECIFICATION 108-14008.
- 4 PACKAGE 50,000 PER REEL.
- 5 PACKAGE 10,000 PER REEL.
- 6 TO ENSURE 1/2 OZ MIN RETENTION, DO NOT NOT EXCEED 0.50 [.002] DIFFERENCE IN PIN DIA WHEN CHANGING TO A SMALLER DIA PIN.
- 7 SHOULDER ON SOCKET PROVIDES RETENTION IN THE P.C. BOARD. THE RECOMMENDED HOLE DIAMETER IS φ1.75 [φ.069] MINIMUM, + 0.08 [.003] MAXIMUM PRIOR TO SOLDERING.

5	φ0.94-φ1.04 [φ.037-φ.041]	TIN 2	TIN 2	1-5645502-2
5	φ0.94-φ1.04 [φ.037-φ.041]	GOLD 3	TIN 2	1-5645502-1
4	φ0.94-φ1.04 [φ.037-φ.041]	GOLD 3	TIN 2	5645502-1
PACKAGING	PIN DIA 6	SPRING EYELET FINISH		PART NO

THIS DRAWING IS A CONTROLLED DOCUMENT.		DWN	J. POLIGNONE	26JAN06				
		CHK	J. HAVENER	26JAN06				
		APVD	J. HAVENER	26JAN06	NAME			
		PRODUCT SPEC			MINIATURE SPRING SOCKET ASSY			
		APPLICATION SPEC			SERIES 4			
		114-26004			SIZE	CAGE CODE	DRAWING NO	RESTRICTED TO
MATERIAL		FINISH			A2	00779	C=5645502	-
SEE TABLE		CUSTOMER DRAWING			SCALE	SHEET	REV	
					10:1	1 of 1	B1	