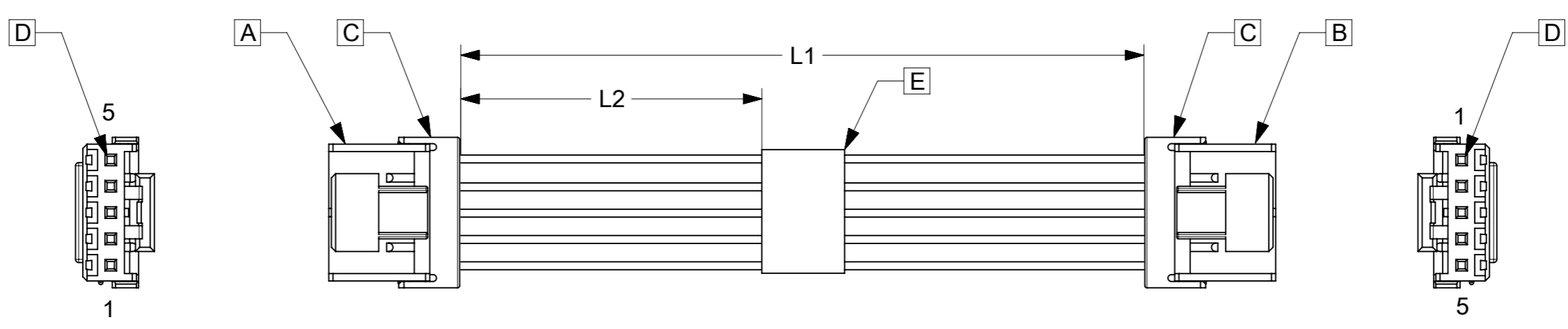


ITEM	MOLEX P/N	DESCRIPTION	QTY	UOM
A,B	511630500	2.5 W/B REC HSG	2	PC
C	511640505	2.5 W/B RETAINER	2	PC
D	507528200	Mini-Lock 2.5 W/B Crimp Rec Term 20-22AWG	10	PC
E	884260070	PAPER PRINTED PAPER WHITE (S100X150YAJ)	1	PC

FROM	TO	CABLE DESCRIPTION	COLOR
A1	B5	20 AWG UL1061 BLACK DISCRETE WIRE	BLACK
A2	B4		
A3	B3		
A4	B2		
A5	B1		



PART NUMBER	L1	L2	TITLE
151370500	50±5	13REF	Mini-Lock 5 Circuit 50MM
151370501	100±8	38REF	Mini-Lock 5 Circuit 100MM
151370502	150±10	63REF	Mini-Lock 5 Circuit 150MM
151370503	300±10	138REF	Mini-Lock 5 Circuit 300MM
151370505	450±15	213REF	Mini-Lock 5 Circuit 450MM
151370506	600±15	288REF	Mini-Lock 5 Circuit 600MM

- NOTES**
1. Cable assembly to be tested 100% for continuity and polarity.
 2. Label text must be 2mm max. In height with Arial font.
 3. Connector view shown is from mating side.

P/N:15137XXXX — MOLEX PN
 MOLEX
 BATCH WK/YR

DETAIL A

DATE	REV	DESCRIPTION	REVISED BY
2018.05.29	A	INITIAL RELEASE	SSHIVASHANKA
2018.11.14	B	CABLE SIZE CHANGED FROM 22AWG TO 20AWG	SSHIVASHANKA

THIS DRAWING CONTAINS INFORMATION THAT IS PROPRIETARY TO MOLEX ELECTRONIC TECHNOLOGIES, LLC AND SHOULD NOT BE USED WITHOUT WRITTEN PERMISSION

SYMBOLS ▽ = 0 DIMENSION UNITS ▽ = 0 SCALE ▽ = 0 mm NTS ▽ = 0 GENERAL TOLERANCES (UNLESS SPECIFIED) ▽ = 0 ANGULAR TOL ± ° ▽ = 0 4 PLACES ± ▽ = 0 3 PLACES ± ▽ = 0 2 PLACES ± ▽ = 0 1 PLACE ± ▽ = 0 0 PLACES ± ▽ = 0 DRAFT WHERE APPLICABLE MUST REMAIN WITHIN DIMENSIONS ▽ = 0	CURRENT REV DESC: EC NO: 608031 DRWN: SSHIVASHANKA 2018/11/14 CHK'D: MNARAYAN01 2018/11/22 APPR: MNARAYAN01 2018/11/22 INITIAL REVISION: DRWN: SSHIVASHANKA 2018/05/29 APPR: MNARAYAN01 2018/06/05			
	PRODUCT CUSTOMER DRAWING DOCUMENT NUMBER: 151370500 DOC TYPE: PSD DOC PART: 000 REVISION: B		SHEET NUMBER: 1 OF 1	