

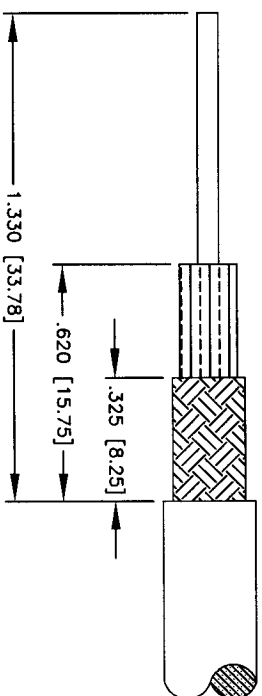
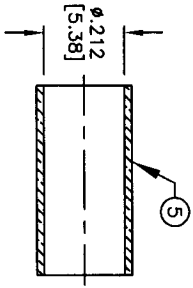
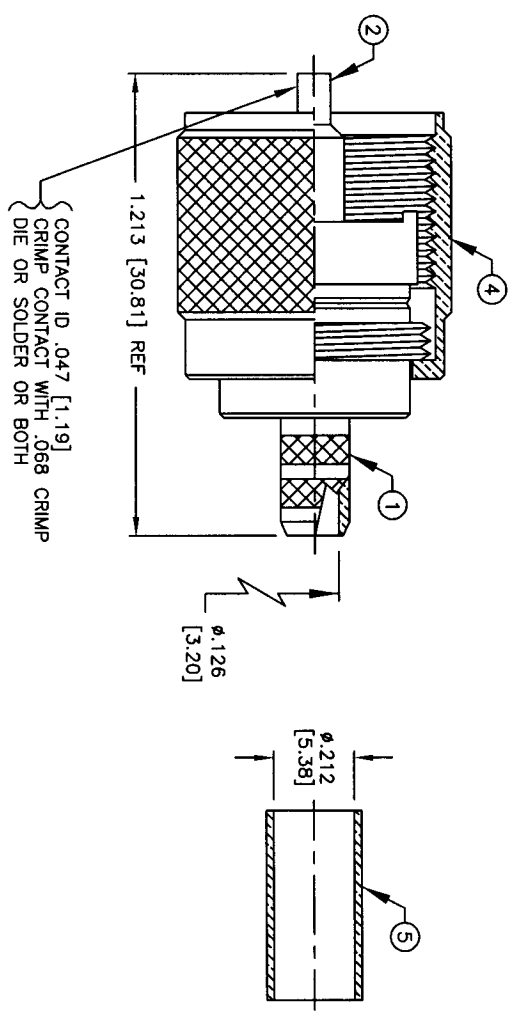
ENVELOPE / ASSEMBLY DRAWING

000000

SPECIFICATION CONTROL DRAWING

THIS DRAWING CONTAINS INFORMATION PROPRIETARY TO RF INDUSTRIES, LTD. ANY UNAUTHORIZED USE OF THIS DRAWING IS EXPRESSLY PROHIBITED. ANY VIOLATION IS PUNISHABLE UNDER U.S. COPYRIGHT LAWS.

ALL DIMENSIONS ARE REFERENCE ONLY



SUGGESTED STRIPPING INSTRUCTIONS
SUGGESTED CRIMP DIE: .213

SPECIFICATIONS:

NON CONSTANT WORKING VOLTAGE: 500 VRMS @ SEA LEVEL
FREQUENCY RANGE: 0-300 MHz
(C) FOR RG-58, 58A, 58C, 141, 141A, BELDEN 8240, 8259, 8262, 9201, 9203, 9310, 9311 & COMM/SCOPE 0268
(C2) FOR TIMES LMR-200, ALPHA 9848 & MSI-22

ITEM	DESCRIPTION	QTY	MATERIAL	FINISH
5	FERRULE [FER-103]	1	BRASS	NICKEL
4	SHELL	1	BRASS	NICKEL
3	DIELECTRIC	1	DAP	PANTONE 129
2	CONTACT	1	BRASS	SILVER
1	BODY	1	BRASS	NICKEL

DIMENSIONS ARE IN INCHES AND [MILLIMETERS]
UNLESS OTHERWISE NOTED TOLERANCES ARE:
DECIMALS DIAMETER

DRAWN	C. ZUNIGA	2/16/00
CHECKED	AMC	2-17-00
ORU DRAWN	C. JONES	11/6/91
APPROVALS		

RF Connectors
DIVISION OF RF INDUSTRIES, LTD.
7610 MIRAMAR RD
SAN DIEGO, CA 92126
(858) 549-6340
(858) 549-6345 FAX

RFU-505

UHF MALE CRIMP

SIZE	A	CABLE GROUP	C, C2	DWG NO.	8060	REV	K
SCALE:	2:1		CAD FILE	D:\14ARC	SHEET	1	OF 1