

PANEL FEED THROUGH M12-F D-cod. 4 PINS

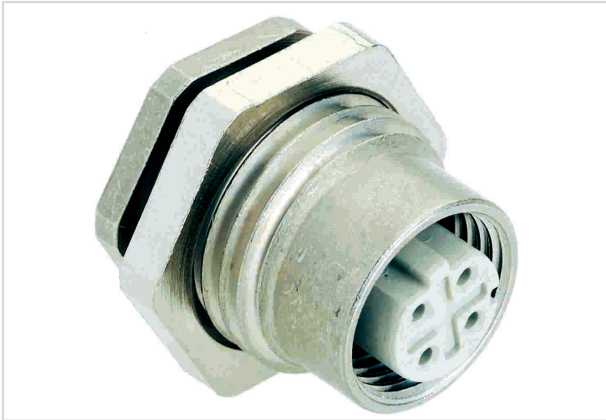


Image is for illustration purposes only. Please refer to product description.

Part number	21 03 371 2415
Specification	PANEL FEED THROUGH M12-F D-cod. 4 PINS
HARTING eCatalogue	https://b2b.harting.com/21033712415

Identification

Category	Connectors
Series	Circular connectors M12
Element	PCB adapter
Specification	Straight for rear mounting

Version

Termination method	Reflow soldering termination (THR)
Gender	Female
Shielding	Shielded
Number of contacts	4
Coding	D-coding
Locking type	Screw locking

Technical characteristics

Rated current	4 A
Rated voltage	50 V
Rated impulse voltage	2.5 kV
Pollution degree	3
Transmission characteristics	Cat. 5 Class D up to 100 MHz
Overvoltage category	III
Data rate	10 Mbit/s 100 Mbit/s
Insulation resistance	>10 ⁸ Ω



Pushing Performance

Technical characteristics

Contact resistance	≤10 mΩ
Tightening torque	2 Nm Lock nut
Ambient temperature	-40 ... +85 °C
Mating cycles	≥100
Degree of protection acc. to IEC 60529	IP67 mated condition
Isolation group	I (600 ≤ CTI)

Material properties

Material (insert)	Polyamide (PA)
Material (contacts)	Copper alloy
Surface (contacts)	Au over Ni Mating side
Material (hood/housing)	Zinc die-cast
Material flammability class acc. to UL 94	V-0
RoHS	compliant with exemption
RoHS exemptions	6(c): Copper alloy containing up to 4 % lead by weight
ELV status	compliant with exemption
China RoHS	50
REACH Annex XVII substances	No
REACH ANNEX XIV substances	No
REACH SVHC substances	Yes
REACH SVHC substances	Lead
ECHA SCIP number	0d7d3693-d625-47ab-934a-d241bf72c86e
California Proposition 65 substances	Yes
California Proposition 65 substances	Nickel Lead Naphthalene

Specifications and approvals

Specifications	IEC 61076-2-101
UL / CSA	UL 1977 ECBT2.E235076 CSA-C22.2 No. 182.3 ECBT8.E235076
PROFINET	Yes

Commercial data

Packaging size	1
----------------	---



Pushing Performance

Commercial data

Net weight	15 g
Country of origin	Romania
European customs tariff number	85389099
eCl@ss	27460201 PCB connector (board connector)