

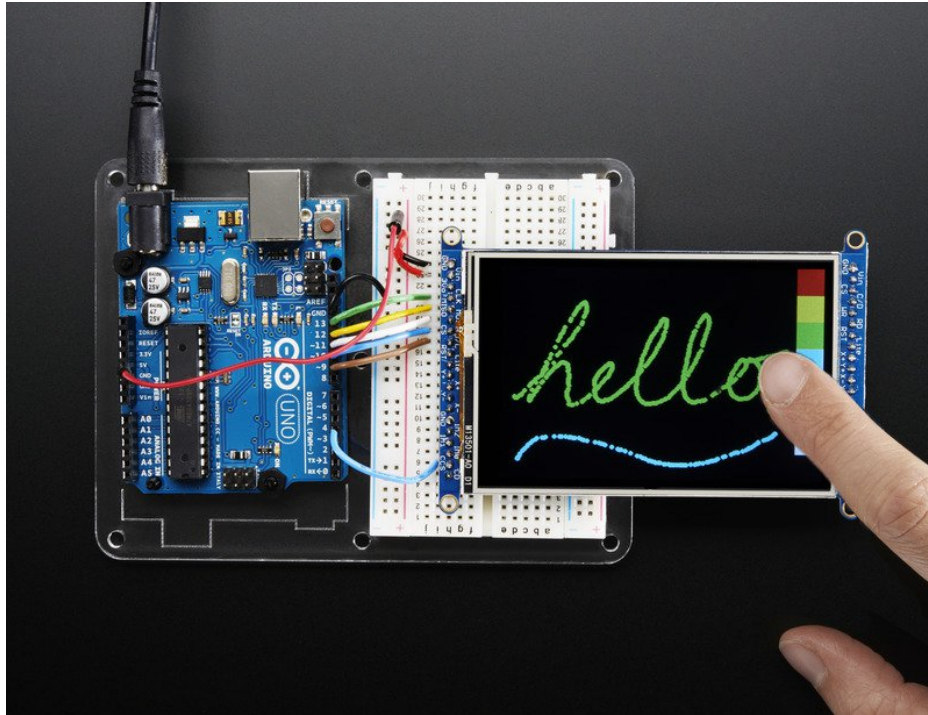
## Adafruit 3.5" 320x480 Color TFT Touchscreen Breakout

Created by lady ada

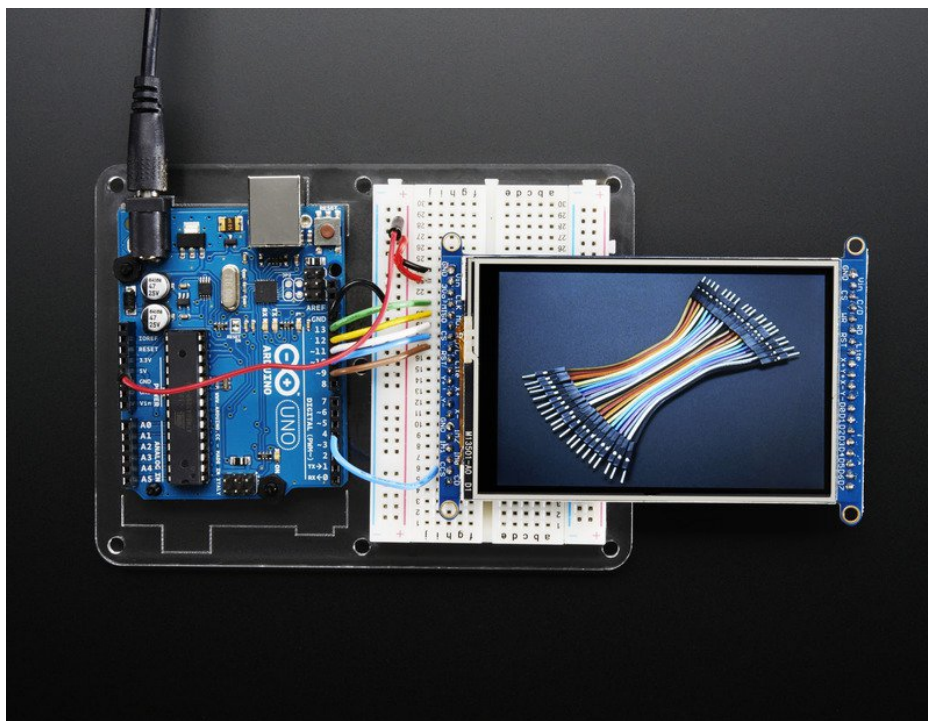


Last updated on 2019-09-18 12:38:07 AM UTC

## Overview

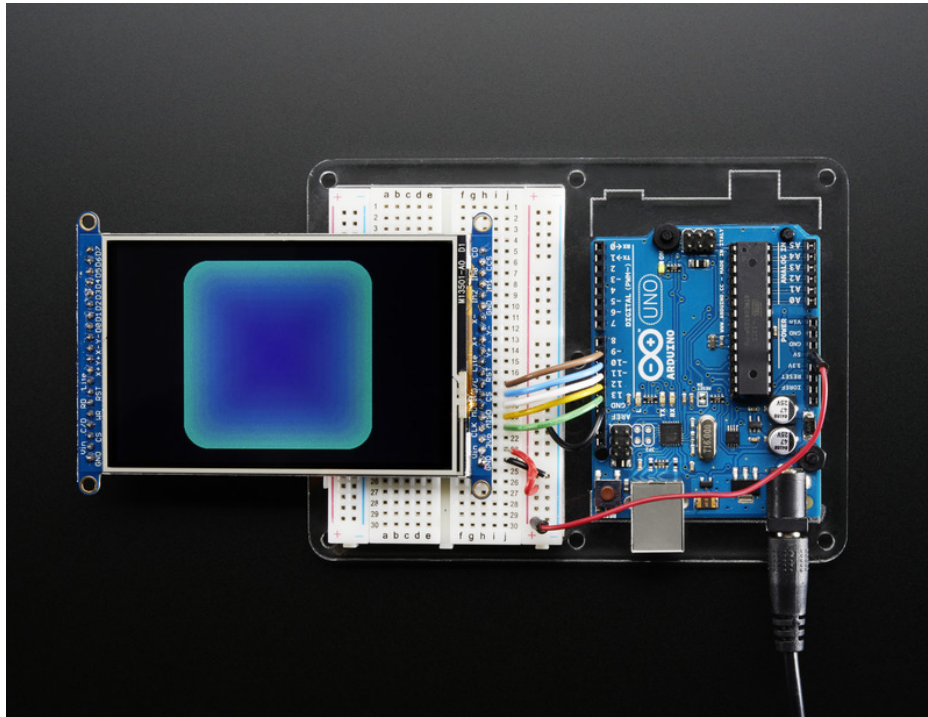


Add some jazz & pizzazz to your project with a color touchscreen LCD. This TFT display is big (3.5" diagonal) bright (6 white-LED backlight) and colorful! 480x320 pixels with individual RGB pixel control, this has way more resolution than a black and white 128x64 display, and double our 2.8" TFT. As a bonus, this display has a resistive touchscreen attached to it already, so you can detect finger presses anywhere on the screen.

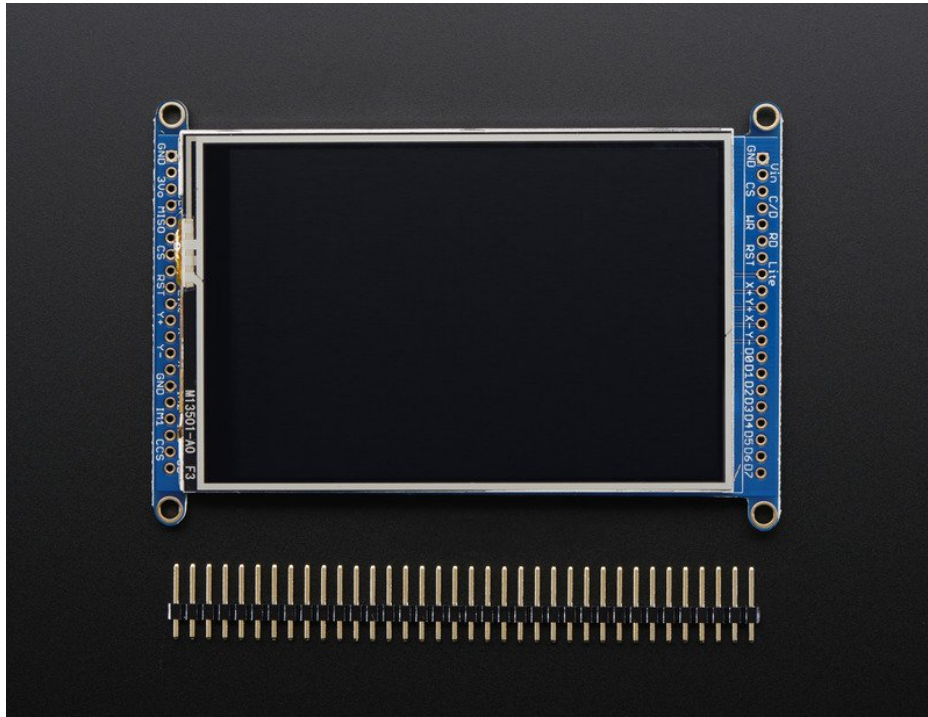


This display has a controller built into it with RAM buffering, so that almost no work is done by the microcontroller. **The**

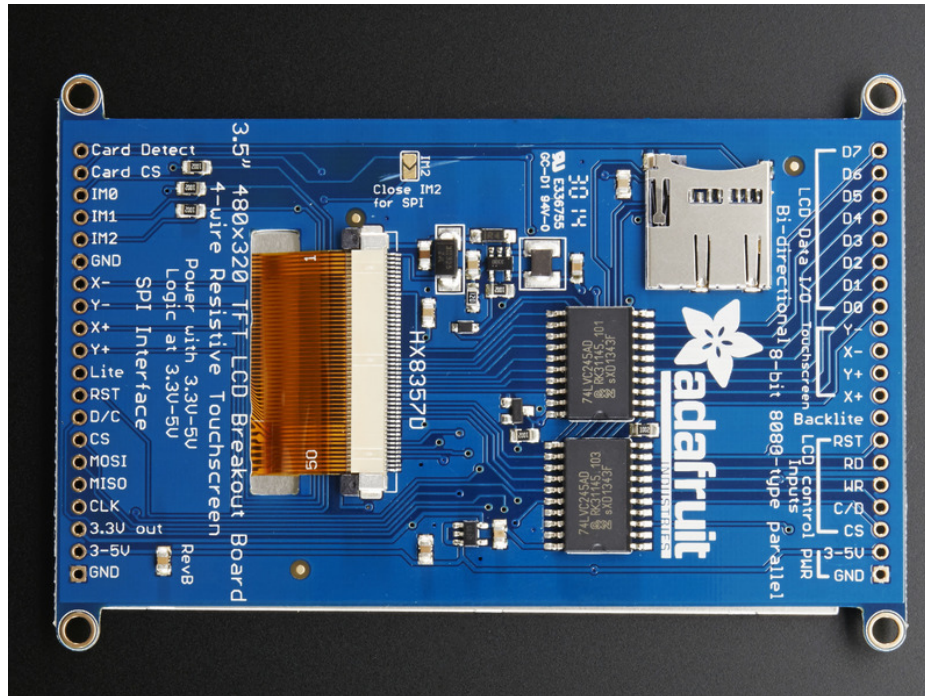
display can be used in two modes: 8-bit or SPI. For 8-bit mode, you'll need 8 digital data lines and 4 or 5 digital control lines to read and write to the display (12 lines total). SPI mode requires only 5 pins total (SPI data in, data out, clock, select, and d/c) but is slower than 8-bit mode. In addition, 4 pins are required for the touch screen (2 digital, 2 analog) or [you can purchase and use our resistive touchscreen controller \(not included\) to use I2C or SPI](#)(<http://adafruit.it/1571>).



Of course, we wouldn't just leave you with a datasheet and a "good luck!". For 8-bit interface fans we've written a full open source graphics library that can draw pixels, lines, rectangles, circles, text, and more (<https://adafruit.it/aHk>). For SPI users, we have a library as well (<https://adafruit.it/dQW>), its separate from the 8-bit library since both versions are heavily optimized. We also have a touch screen library that detects x, y and z (pressure)(<https://adafruit.it/aT1>) and example code to demonstrate all of it.



## Pinouts

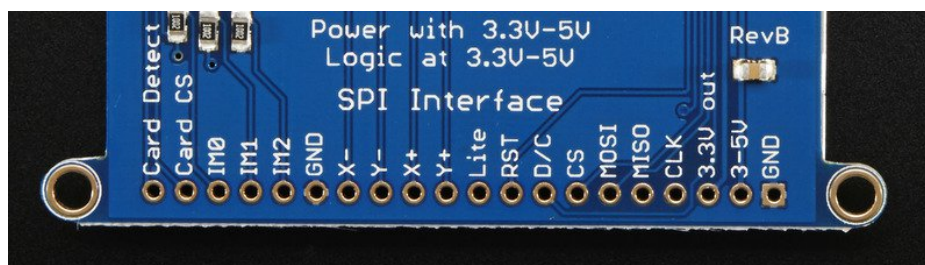


The 3.5" TFT display on this breakout supports many different modes - so many that the display itself has 50 pins. However, we think most people really only use 2 different modes, either "SPI" mode or 8-bit mode. Each 'side' of the display has all the pins required for that mode. You can switch between modes, by rewiring the display, but it cannot be used in two modes at the same time!

All logic pins, both 8-bit and SPI sides, are 3-5V logic level compatible, the 74LVX245 chips on the back perform fast level shifting so you can use either kind of logic levels. If there's data output, the levels are at 3.3V

### SPI Mode

This is what we think will be a popular mode when speed is not of the utmost importance. It doesn't use as many pins (only 4 to draw on the TFT if you skip the MISO pin), is fairly flexible, and easy to port to various microcontrollers. It also allows using a microSD card socket on the same SPI bus. However, its slower than parallel 8-bit mode because you have to send each bit at a time instead of 8-bits at a time. Tradeoffs!

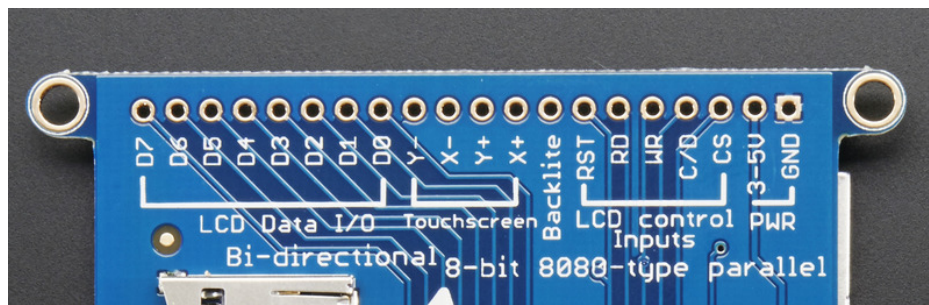


- **GND** - this is the power and signal ground pin
- **3-5V / Vin** - this is the power pin, connect to 3-5VDC - it has reverse polarity protection but try to wire it right!
- **3.3Vout** - this is the 3.3V output from the onboard regulator
- **CLK** - this is the SPI clock input pin

- **MISO** - this is the SPI Master In Slave Out pin, its used for the SD card mostly, and for debugging the TFT display. It isn't necessary for using the TFT display which is write-only
- **MOSI** - this is the SPI Master Out Slave In pin, it is used to send data from the microcontroller to the SD card and/or TFT
- **CS** - this is the TFT SPI chip select pin
- **D/C** - this is the TFT SPI data or command selector pin
- **RST** - this is the TFT reset pin. There's auto-reset circuitry on the breakout so this pin is not required but it can be helpful sometimes to reset the TFT if your setup is not always resetting cleanly. Connect to ground to reset the TFT
- **Lite** - this is the PWM input for the backlight control. It is by default pulled high (backlight on) you can PWM at any frequency or pull down to turn the backlight off
- **Y+ X+ Y- X-** these are the 4 resistive touch screen pads, which can be read with analog pins to determine touch points. They are completely separated from the TFT electrically (the overlay is glued on top)
- **IM2 IM1 IM0** - these are interface control set pins. In general these breakouts aren't used, and instead the onboard jumpers are used to fix the interface to SPI or 8-bit. However, we break these out for advanced use and also for our test procedures
- **Card CS / CCS** - this is the SD card chip select, used if you want to read from the SD card.
- **Card Detect / CD** - this is the SD card detect pin, it floats when a card is inserted, and tied to ground when the card is not inserted. We don't use this in our code but you can use this as a switch to detect if an SD card is in place without trying to electrically query it. Don't forget to use a pullup on this pin if so!

## 8-Bit Mode

This mode is for when you have lots of pins and want more speed. In this mode we send 8 bits at a time, so it needs way more pins, 12 or so (8 bits plus 4 control)! If your microcontroller



- **GND** - this is the power and signal ground pin
- **3-5V (Vin)** - this is the power pin, connect to 3-5VDC - it has reverse polarity protection but try to wire it right!
- **CS** - this is the TFT 8-bit chip select pin (it is also tied to the SPI mode **CS** pin)
- **C/D** - this is the TFT 8-bit data or command selector pin (it is also tied to the SPI mode **C/D** pin)
- **WR** - this is the TFT 8-bit write strobe pin. It is also connected to the **SPI CLK** pin
- **RD** - this is the TFT 8-bit read strobe pin. You may not need this pin if you don't want to read data from the display
- **RST** - this is the TFT reset pin. There's auto-reset circuitry on the breakout so this pin is not required but it can be helpful sometimes to reset the TFT if your setup is not always resetting cleanly. Connect to ground to reset the TFT
- **Backlite** - this is the PWM input for the backlight control. It is by default pulled high (backlight on) you can PWM at any frequency or pull down to turn the backlight off
- **Y+ X+ Y- X-** these are the 4 resistive touch screen pads, which can be read with analog pins to determine touch points. They are completely separated from the TFT electrically (the overlay is glued on top)
- **D0** thru **D7** - these are the 8 bits of parallel data sent to the TFT in 8-bit mode. **D0** is the least-significant-bit and **D7** is the MSB



## Wiring & Test

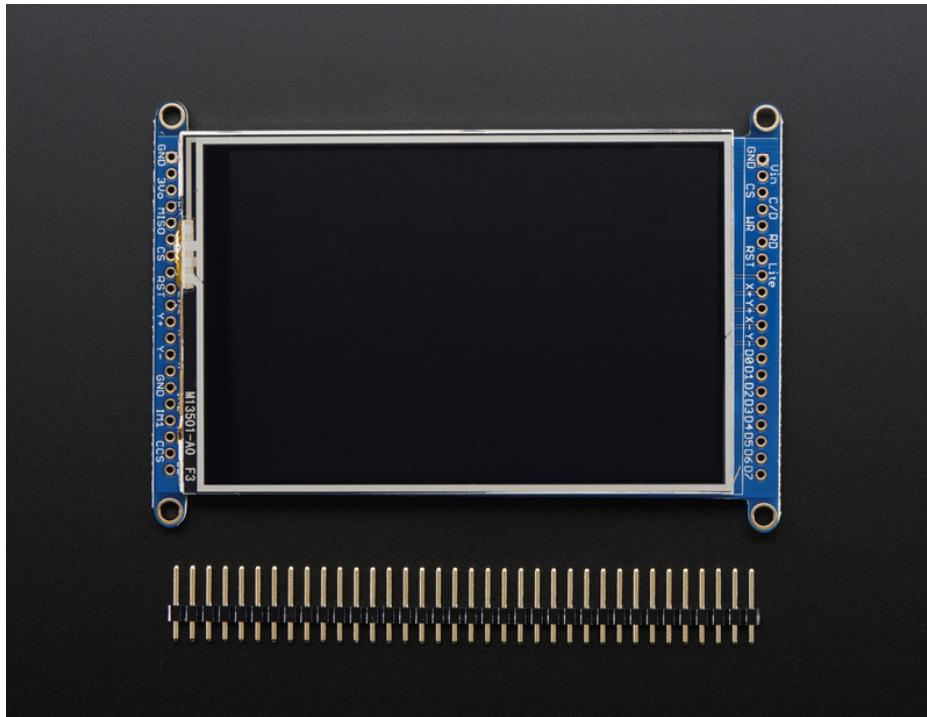
We tried to make this TFT breakout useful for both high-pin microcontrollers that can handle 8-bit data transfer modes as well as low-pincount micros like the Arduino UNO and Leonardo that are OK with SPI.

Essentially, the tradeoff is pins for speed. SPI is about 2-4 times slower than 8-bit mode, but that may not matter for basic graphics!

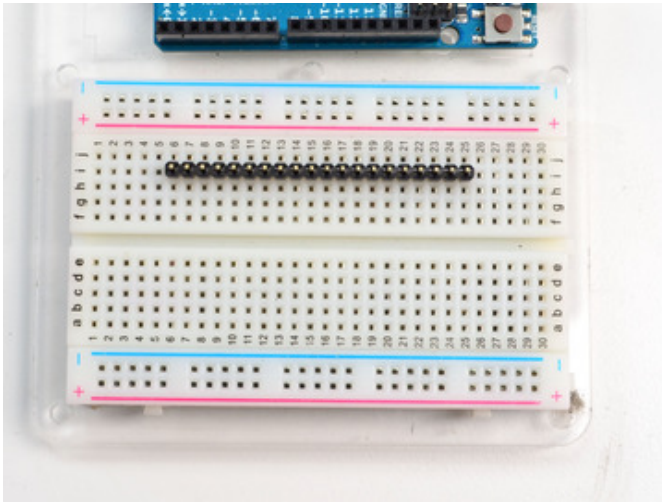
In addition, SPI mode has the benefit of being able to use the onboard microSD card socket for reading images. We don't have support for this in 8-bit mode so if you want to have an all-in-one image viewer type application, use SPI!

## Assembling Header

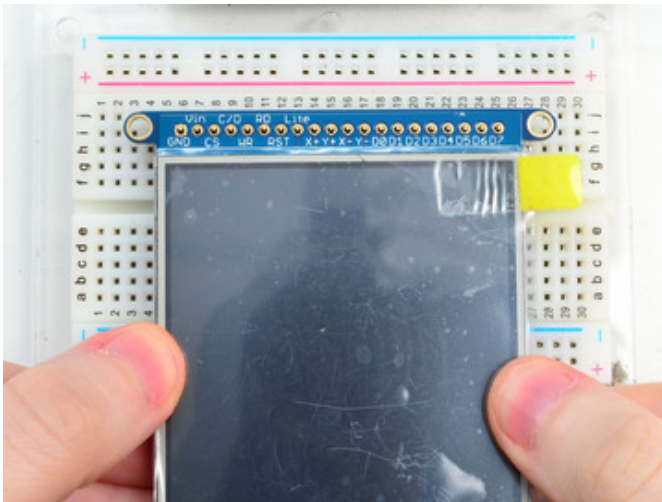
Either way, if you're using a breadboard, you'll need to solder header onto one or two of the sides. The procedure is the same for both sides





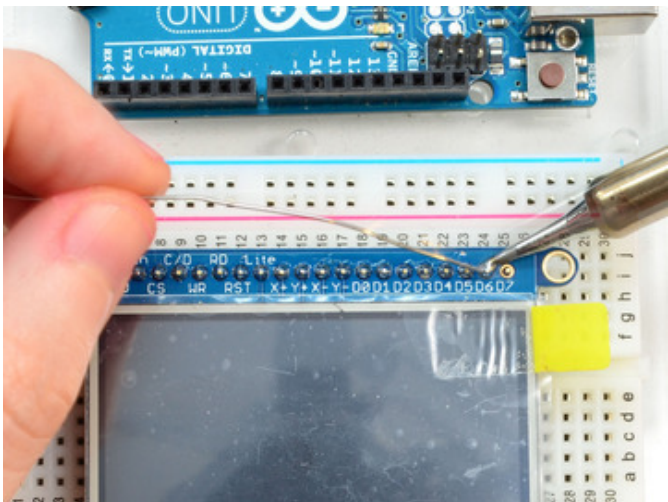
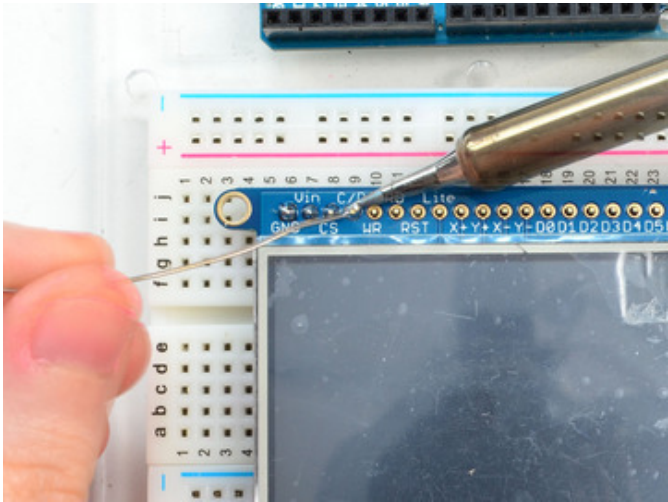
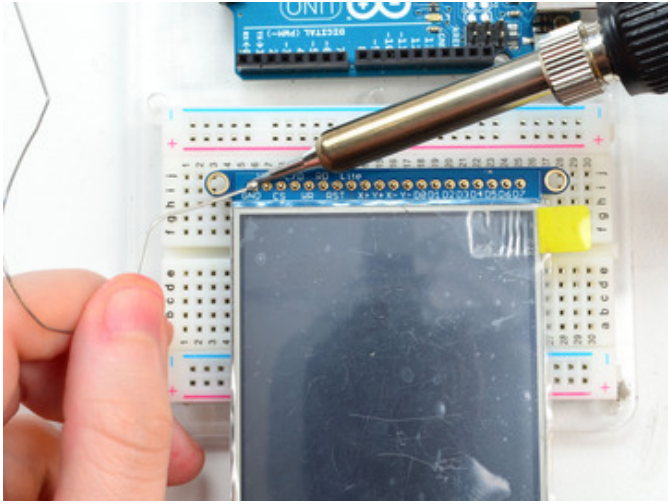


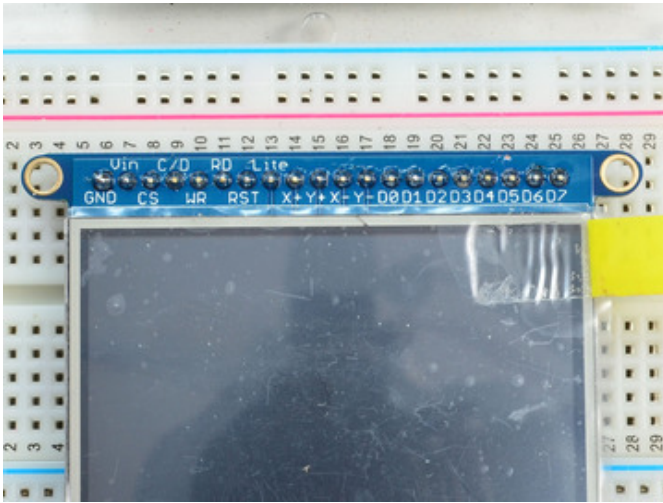
Prepare the header strip:  
Cut the strip to length if necessary. It will be easier to solder if you insert it into a breadboard - **long pins down**



Add the breakout board:  
Place the breakout board over the pins so that the short pins poke through the breakout pads

Add the breakout board:  
Place the breakout board over the pins so that the short pins poke through the breakout pads





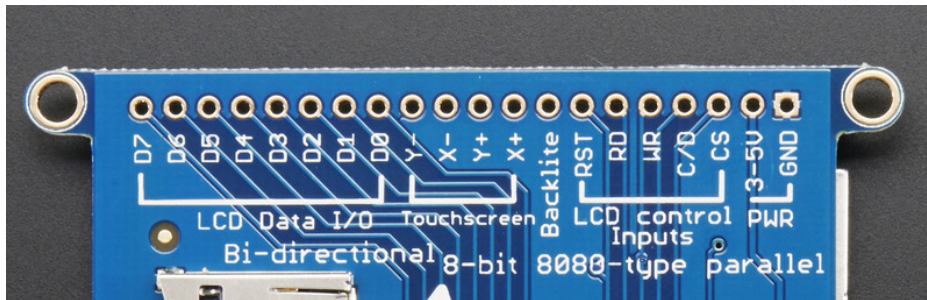
You're done! Check your solder joints visually and continue onto the next steps

## 8-Bit Wiring

Wiring up the 8-bit mode is kind of a pain, so we really only recommend doing it for UNO (which we show) and Mega (which we describe, and is pretty easy since its 8 pins in a row). Anything else, like a Leonardo or Micro, we strongly recommend going with SPI mode since we don't have an example for that. Any other kind of 'Arduino compatible' that isn't an Uno, try SPI first. The 8-bit mode is hand-tweaked in the `Adafruit_TFTLCD pin_magic.h` file. Its really only for advanced users who are totally cool with figuring out bitmasks for various ports & pins.

Really, we'll show how to do the UNO but anything else? go with SPI!

Make sure you're soldering and connecting to the 8-bit side!

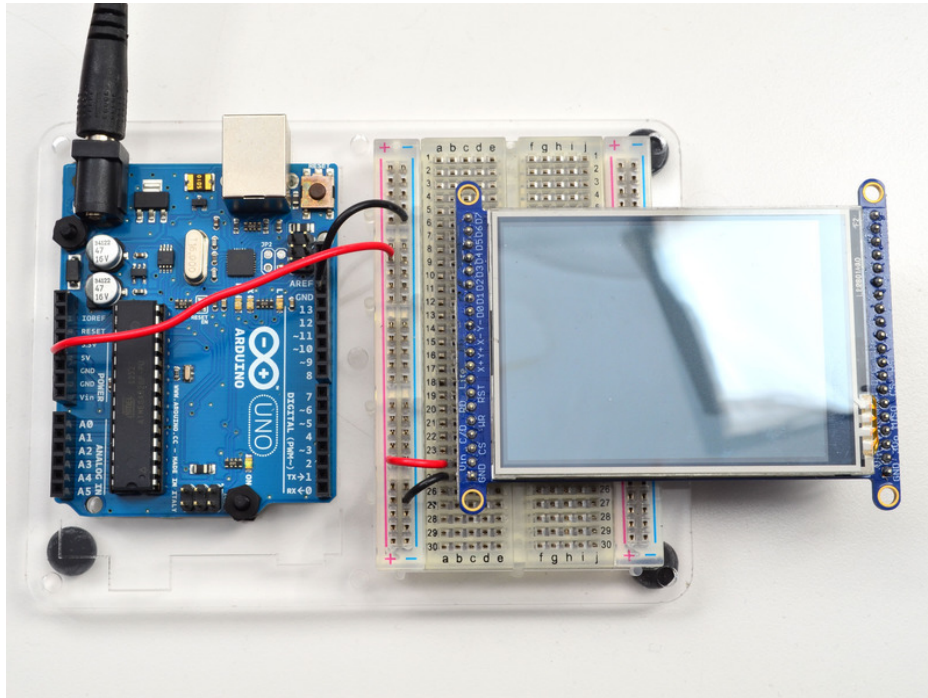


### Part 1 - Power & backlight test

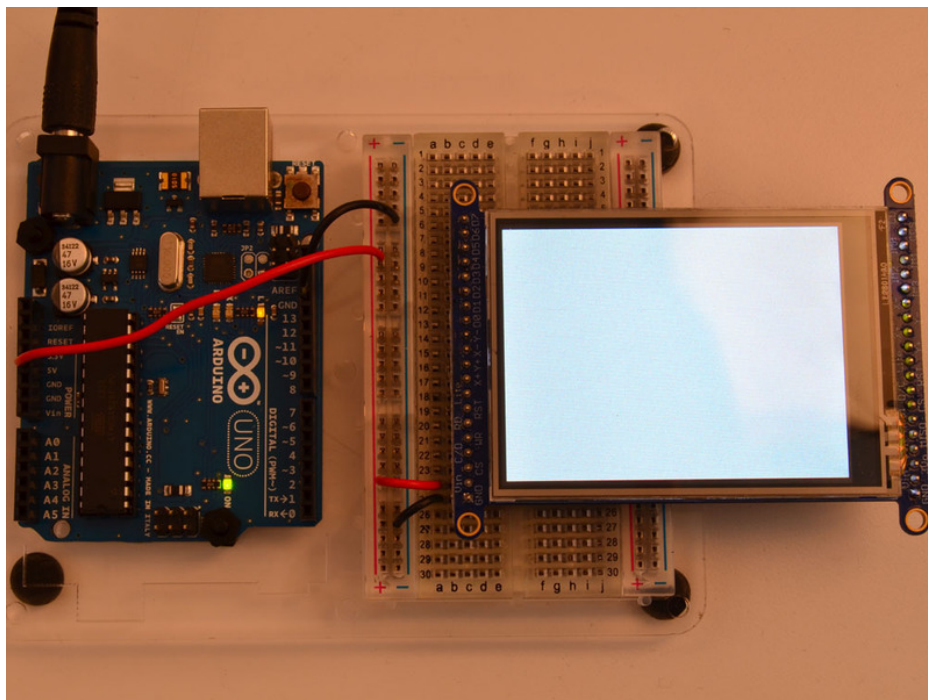
In these images we show using our 2.8" TFT but its the exact same pinout, just a tad smaller!

Begin by wiring up the **3-5VDC** and **GND** pins.

Connect the **3-5V** pin to **5V** and **GND** to **GND** on your Arduino. I'm using the breadboard rails but you can also just wire directly.



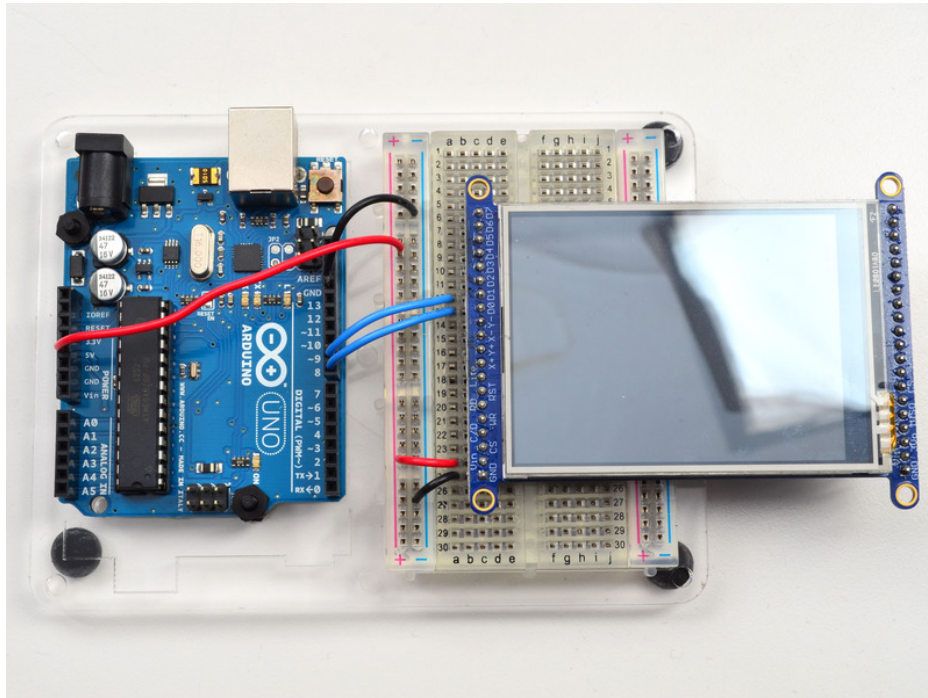
Power it up and you should see the white backlight come on



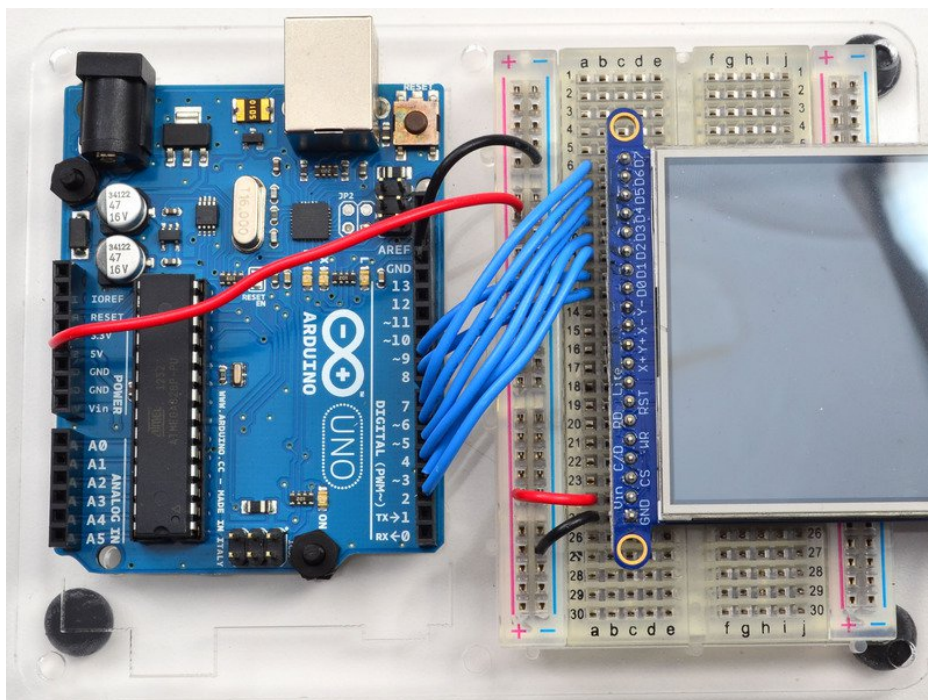
## Part 2 - Data Bus Lines

Now that the backlight is working, we can get the TFT LCD working. There are many pins required, and to keep the code running fairly fast, we have 'hardcoded' Arduino digital pins **#2-#9** for the 8 data lines.

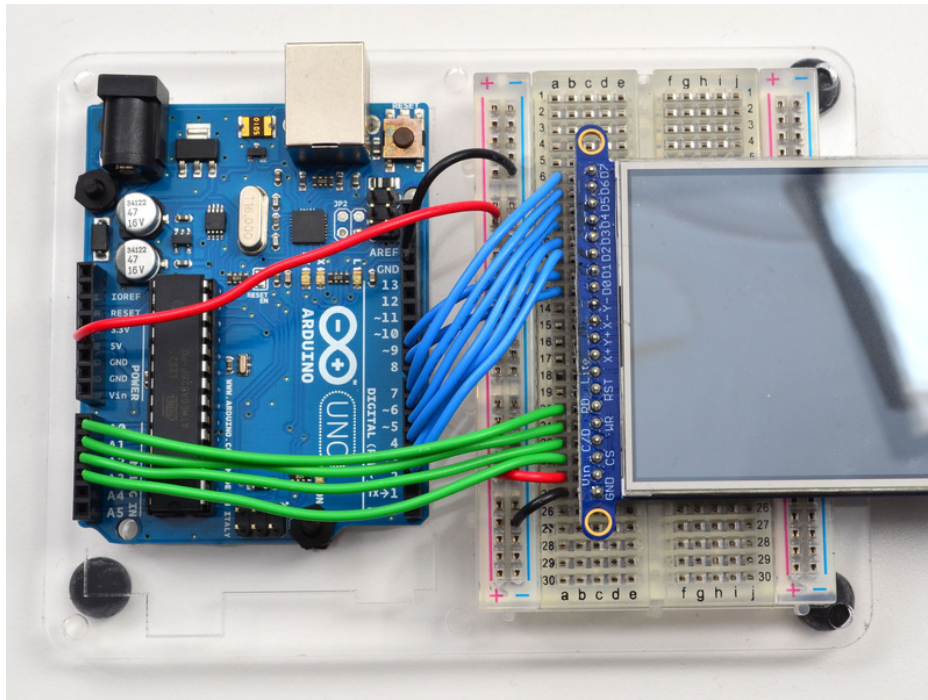
**However, they are not in that order!** D0 and D1 go to **digital #8** and **#9**, then D2-D7 connect to **#2** thru **#7**. This is because Arduino pins **#0** and **#1** are used for serial data so we can't use them



Begin by connecting **D0** and **D1** to digital **#8** and **9** respectively as seen above. If you're using a Mega, connect the TFT Data Pins **D0-D1** to Mega pins **#22-23**, in that order. Those Mega pins are on the 'double' header.

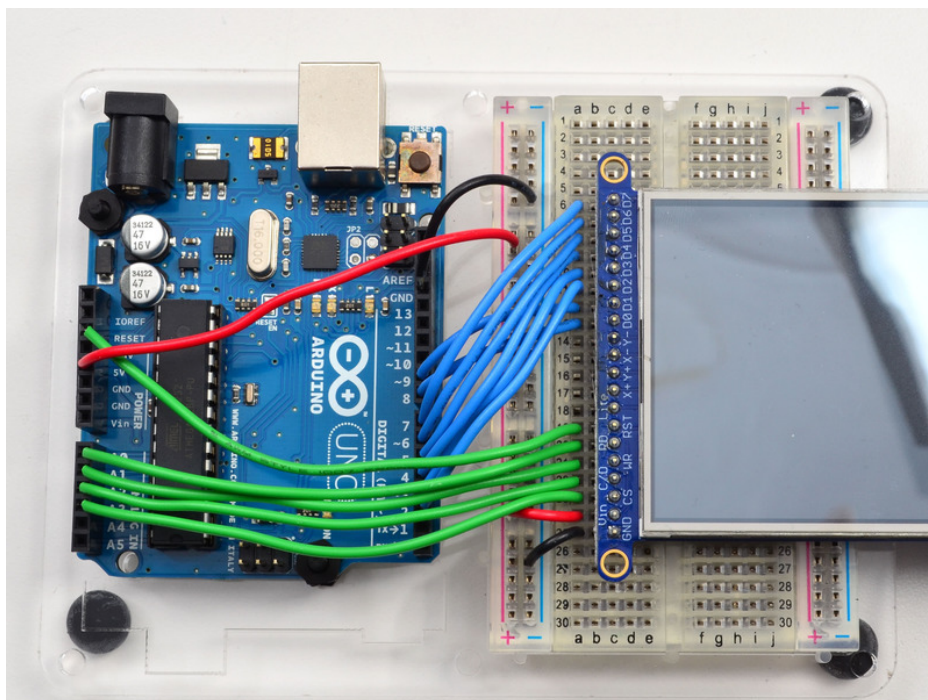


Now you can connect the remaining 6 pins over. Connect **D2-D7** on the TFT pins to digital **2** thru **7** in that order. If you're using a Mega, connect the TFT Data Pins **D2-D7** to Mega pins **#24-29**, in that order. Those Mega pins are on the 'double' header.



In addition to the 8 data lines, you'll also need 4 or 5 control lines. These can later be reassigned to any digital pins, they're just what we have in the tutorial by default.

- Connect the third pin **CS (Chip Select)** to Analog 3
- Connect the fourth pin **C/D (Command/Data)** to Analog 2
- Connect the fifth pin **WR (Write)** to Analog 1
- Connect the sixth pin **RD (Read)** to Analog 0



You can connect the seventh pin **RST (Reset)** to the Arduino Reset line if you'd like. This will reset the panel when the Arduino is Reset. You can also use a digital pin for the LCD reset if you want to manually reset. There's auto-reset

circuitry on the board so you probably don't need to use this pin at all and leave it disconnected

The **RD** pin is used to read the chip ID off the TFT. Later, once you get it all working, you can remove this pin and the ID test, although we suggest keeping it since its useful for debugging your wiring.

OK! Now we can run some code

## 8-Bit Library Install

---

We have example code ready to go for use with these TFTs. It's written for Arduino, which should be portable to any microcontroller by adapting the C++ source.

Two libraries need to be downloaded and installed: first is the [Adafruit\\_TFTLCD library \(https://adafru.it/aHk\)](https://adafru.it/aHk) (this contains the low-level code specific to this device), and second is the [Adafruit GFX Library \(https://adafru.it/aJa\)](https://adafru.it/aJa) (which handles graphics operations common to many displays we carry). If you have **Adafruit\_GFX** already, make sure its the most recent version since we've made updates for better performance

<https://adafru.it/dcW>

<https://adafru.it/dcW>

<https://adafru.it/cBB>

<https://adafru.it/cBB>

Download both ZIP files, uncompress and rename the folders to **Adafruit\_TFTLCD** (contains **Adafruit\_TFTLCD.cpp** and **.h**) and **Adafruit\_GFX** (contains **Adafruit\_GFX.cpp** and **.h**) respectively. Then place them inside your Arduino **libraries** folder and restart the Arduino IDE. If this is all unfamiliar, we have a [tutorial introducing Arduino library concepts and installation \(https://adafru.it/aYM\)](https://adafru.it/aYM).

## Prepare TFTLCD Library

---

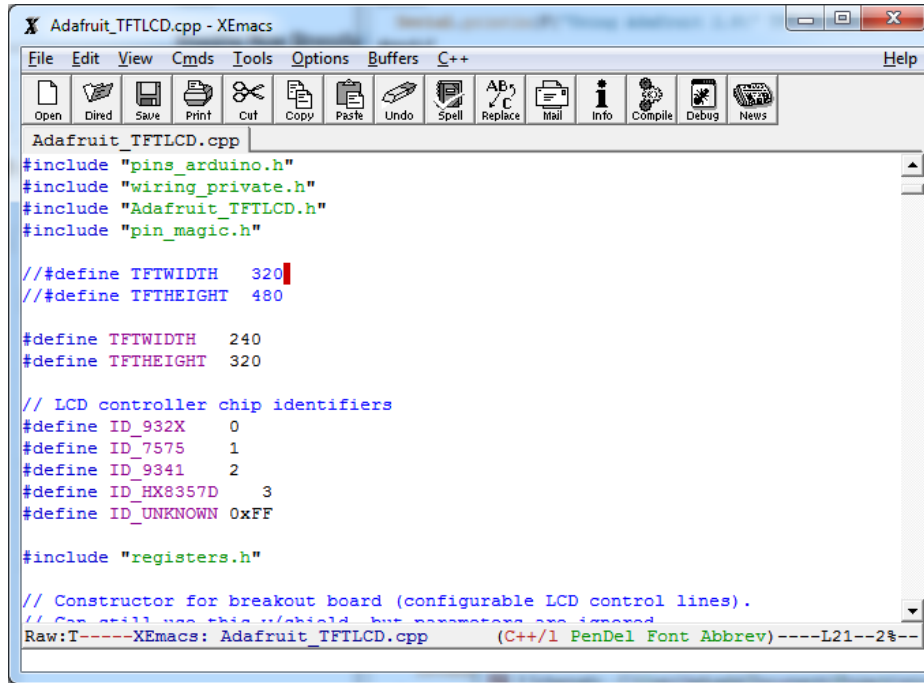
In the **Adafruit\_TFTLCD** Library folder, you may need to edit **Adafruit\_TFTLCD.h**. On about line 12, you will see

```
#define USE_ADAFRUIT_SHIELD_PINOUT
```

Make sure this line is commented out with a `//` in front (it should but if you're having issues, its worth checking).

Next up, we originally designed this library for 320x240 TFTs. Since this is a 480x320, we have to adjust the size the library is expecting. Open up **Adafruit\_TFTLCD.cpp** and find these lines:





```
Adafruit_TFTLCD.cpp
File Edit View Cmds Tools Options Buffers C++ Help
Open Dirsd Save Print Cut Copy Paste Undo Spell Replace Mail Info Compile Debug News
Adafruit_TFTLCD.cpp
#include "pins_arduino.h"
#include "wiring_private.h"
#include "Adafruit_TFTLCD.h"
#include "pin_magic.h"

// #define TFTWIDTH 320
// #define TFTHEIGHT 480

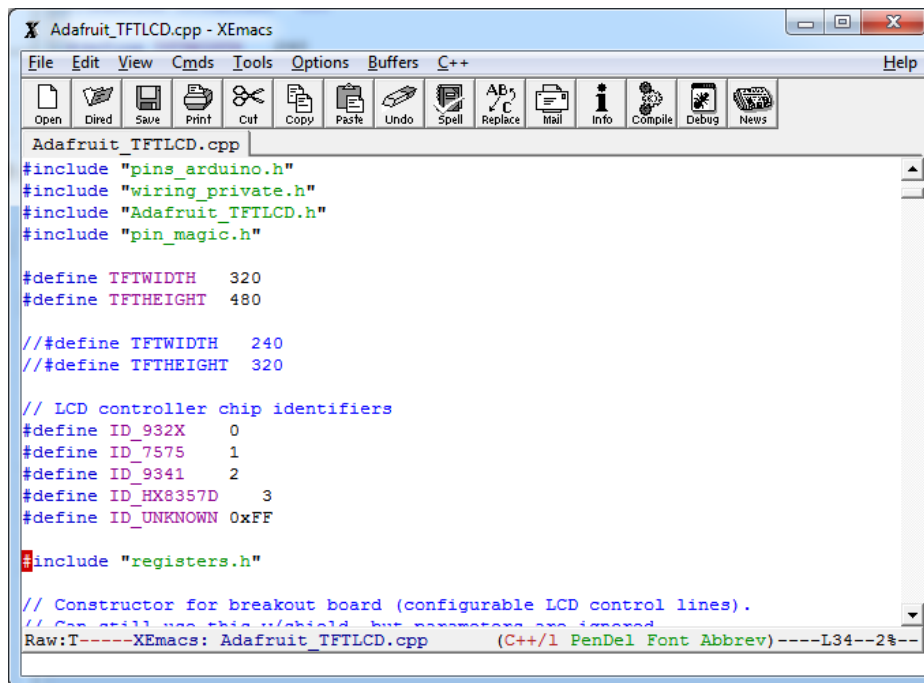
#define TFTWIDTH 240
#define TFTHEIGHT 320

// LCD controller chip identifiers
#define ID_932X 0
#define ID_7575 1
#define ID_9341 2
#define ID_HX8357D 3
#define ID_UNKNOWN 0xFF

#include "registers.h"

// Constructor for breakout board (configurable LCD control lines).
// Can still use this shield, but parameters are ignored.
Raw: T-----XEmacs: Adafruit_TFTLCD.cpp (C++/1 PenDel Font Abbrev)----L21--2%--
```

Comment out the 240 and 320 lines, and uncomment the 320 and 480 lines:



```
Adafruit_TFTLCD.cpp
File Edit View Cmds Tools Options Buffers C++ Help
Open Dirsd Save Print Cut Copy Paste Undo Spell Replace Mail Info Compile Debug News
Adafruit_TFTLCD.cpp
#include "pins_arduino.h"
#include "wiring_private.h"
#include "Adafruit_TFTLCD.h"
#include "pin_magic.h"

#define TFTWIDTH 320
#define TFTHEIGHT 480

// #define TFTWIDTH 240
// #define TFTHEIGHT 320

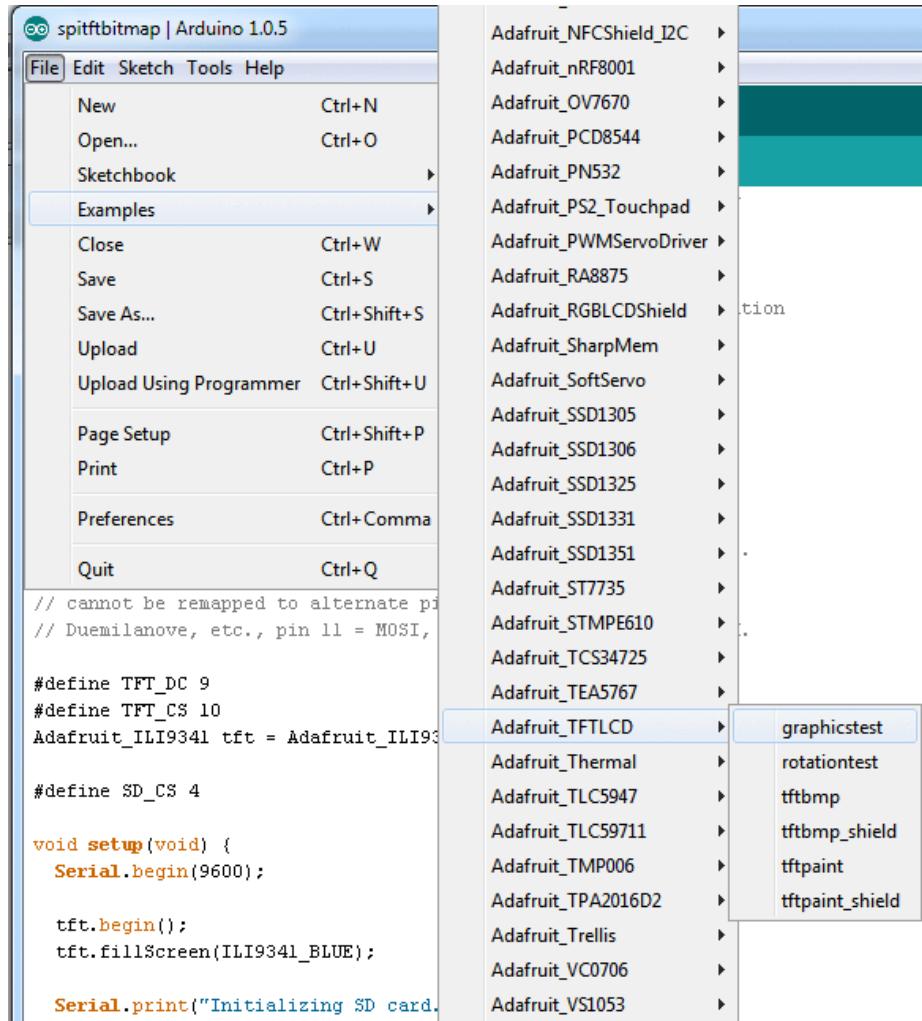
// LCD controller chip identifiers
#define ID_932X 0
#define ID_7575 1
#define ID_9341 2
#define ID_HX8357D 3
#define ID_UNKNOWN 0xFF

#include "registers.h"

// Constructor for breakout board (configurable LCD control lines).
// Can still use this shield, but parameters are ignored.
Raw: T-----XEmacs: Adafruit_TFTLCD.cpp (C++/1 PenDel Font Abbrev)----L34--2%--
```

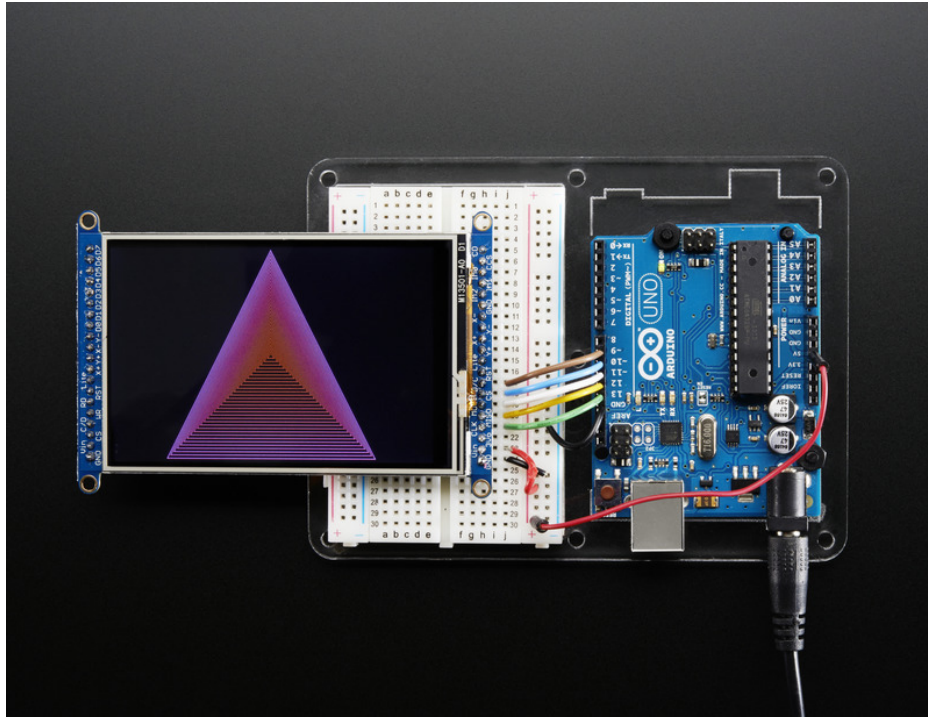
Save it, now you can upload the demo!

After restarting the Arduino software, you should see a new **example** folder called **Adafruit\_TFTLCD** and inside, an example called **graphicstest**. Upload that sketch to your Arduino.

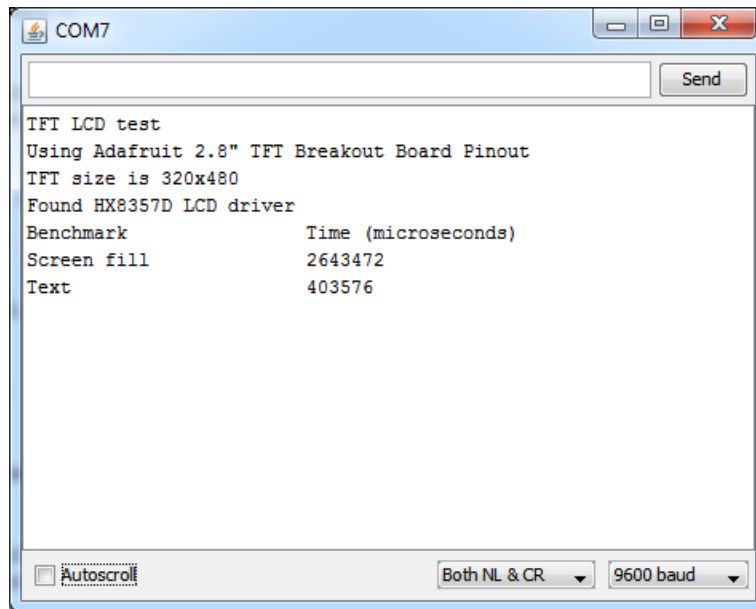


You may need to press the Reset button to reset the Arduino and TFT. You should see a collection of graphical tests draw out on the TFT.

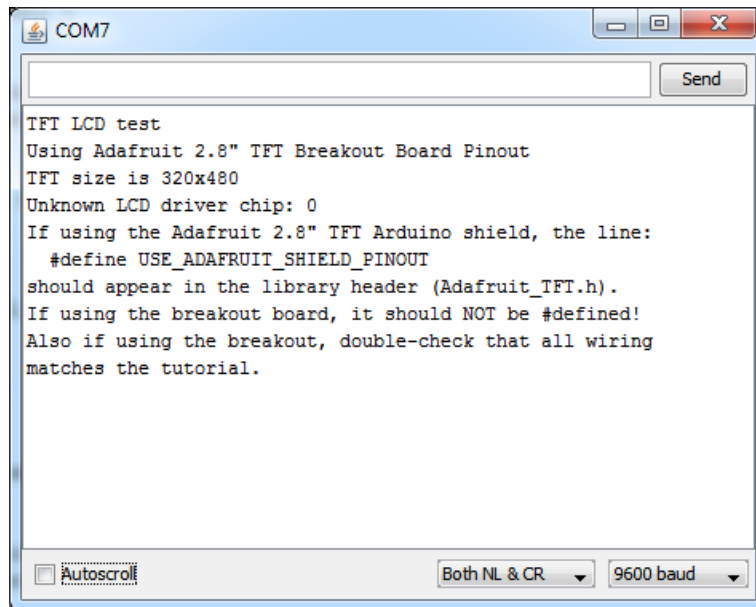
(The images below shows SPI wiring but the graphical output should be similar!)



If you're having difficulties, check the serial console. The first thing the sketch does is read the driver code from the TFT. It should be **0x8357** (for the **HX8357D** controller inside)

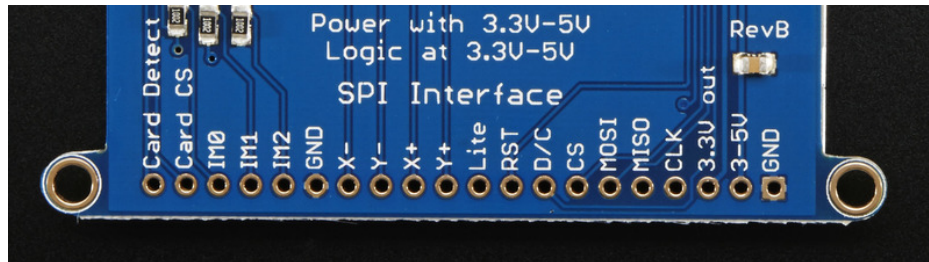


If you **Unknown Driver Chip** then it's probably something with your wiring, double check and try again!



## SPI Wiring & Test

Don't forget, we're using the SPI interface side of the PCB!

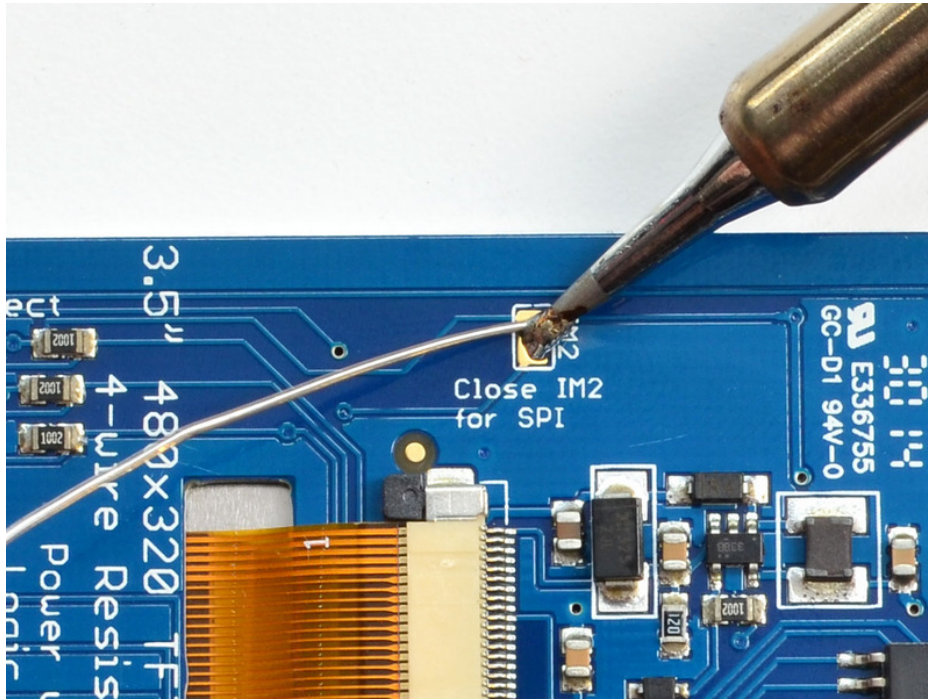


### SPI Mode Jumpers

Before you start, we'll need to tell the display to put us in SPI mode so it will know which pins to listen to. To do that, we have to connect the **IM2** pin to 3.3V. The easiest way to do that is to solder closed the **IM2** jumper on the back of the PCB. Turn over the PCB and find the solder jumper:



With your soldering iron, melt solder to close the jumper indicated **IM2**



If you really don't want to solder, you can also wire the breakout pin to the **3vo** pin, just make sure you don't tie it to 5V by accident! For that reason, we suggest going with the solder-jumper route.

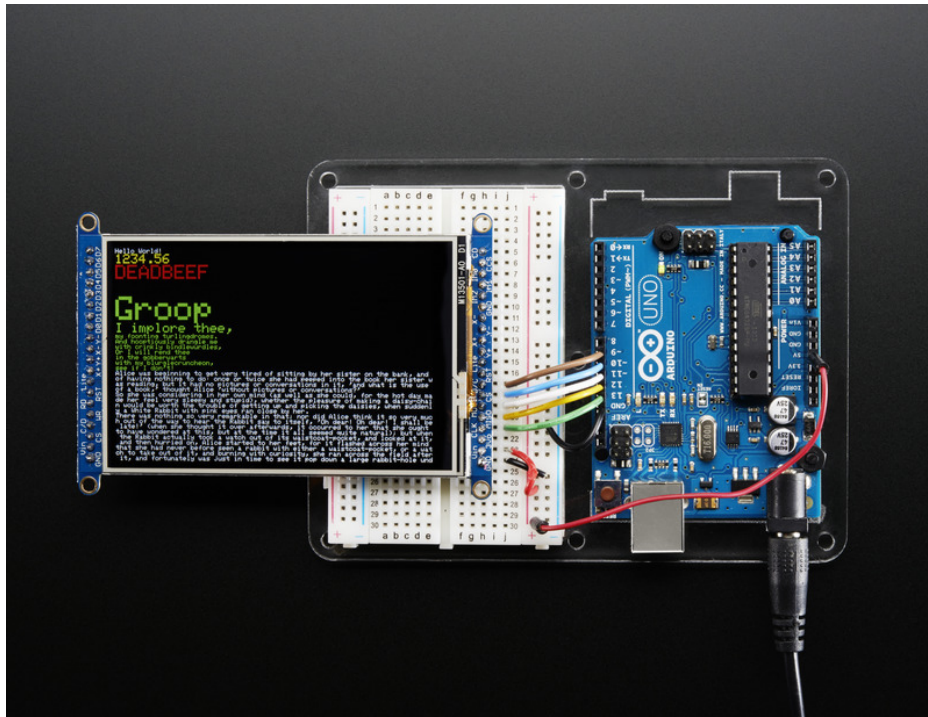
## Wiring

Wiring up the display in SPI mode is much easier than 8-bit mode since there's way fewer wires. Start by connecting the power pins

- **3-5V Vin** connects to the Arduino **5V** pin
- **GND** connects to Arduino ground

- CLK connects to SPI clock. On Arduino Uno/Duemilanove/328-based, that's **Digital 13**. On Mega's, its **Digital 52** and on Leonardo/Due its **ICSP-3** (See [SPI Connections for more details \(https://adafruit.it/d5h\)](https://adafruit.it/d5h))
- MISO connects to SPI MISO. On Arduino Uno/Duemilanove/328-based, that's **Digital 12**. On Mega's, its **Digital 50** and on Leonardo/Due its **ICSP-1** (See [SPI Connections for more details \(https://adafruit.it/d5h\)](https://adafruit.it/d5h))
- MOSI connects to SPI MOSI. On Arduino Uno/Duemilanove/328-based, that's **Digital 11**. On Mega's, its **Digital 51** and on Leonardo/Due its **ICSP-4** (See [SPI Connections for more details \(https://adafruit.it/d5h\)](https://adafruit.it/d5h))
- CS connects to our SPI Chip Select pin. We'll be using **Digital 10** but you can later change this to any pin
- D/C connects to our SPI data/command select pin. We'll be using **Digital 9** but you can later change this pin too.

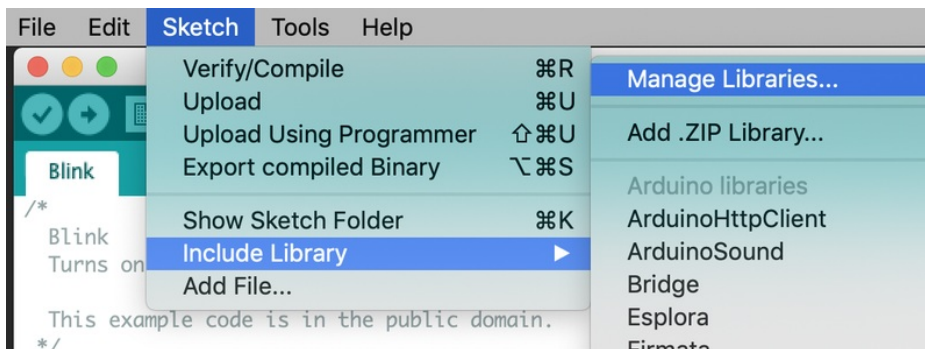
That's it! You do not need to connect the **RST** or other pins for now.



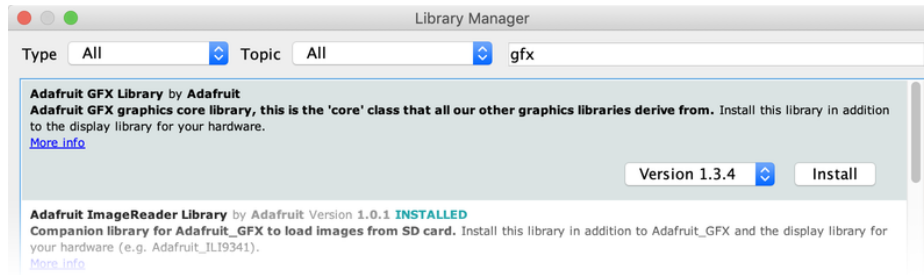
## Install Arduino Libraries

We have example code ready to go for use with these TFTs. It's written for Arduino, which should be portable to any microcontroller by adapting the C++ source.

*Three* libraries need to be installed using the **Arduino Library Manager**...this is the preferred and modern way. From the Arduino "Sketch" menu, select "Include Library" then "Manage Libraries..."

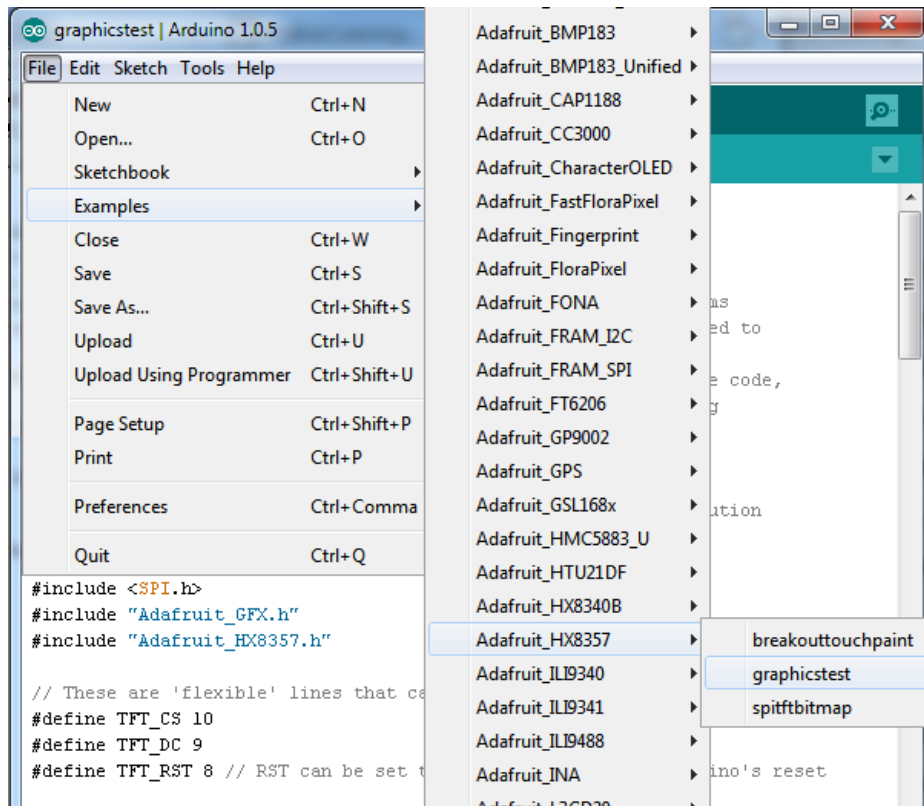


Type “gfx” in the search field to quickly find the first library — **Adafruit\_GFX**:



Repeat the search and install steps, looking for the **Adafruit\_ZeroDMA** and **Adafruit\_HX8357** libraries.

After restarting the Arduino software, you should see a new **example** folder called **Adafruit\_HX8357** and inside, an example called **graphicstest**.

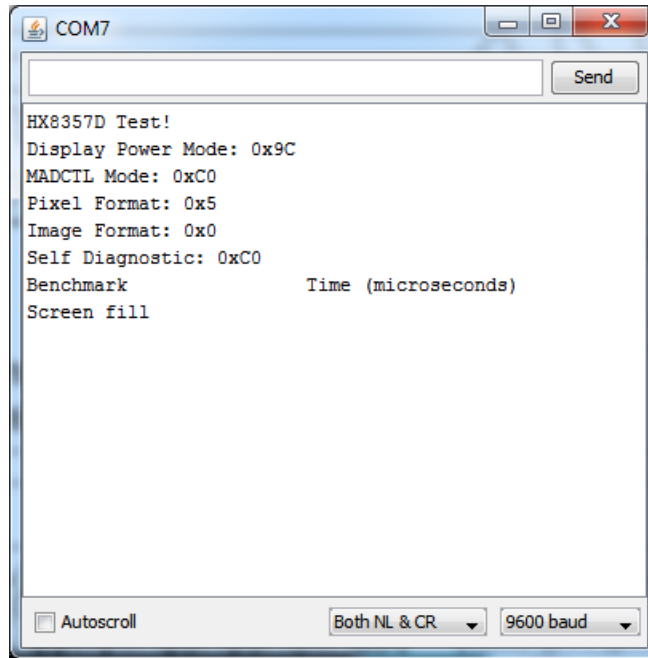


Upload the graphicstest sketch to your Arduino. You may need to press the Reset button to reset the Arduino and TFT. You should see a collection of graphical tests draw out on the TFT.

If you're having difficulties, check the serial console. The first thing the sketch does is read the driver configuration from the TFT, you should see the same numbers as below

**If you did not connect up the MISO line to the TFT, you wont see the read configuration bytes so please make sure you connect up the MISO line for easy debugging!** Once its all working, you can remove the MISO line

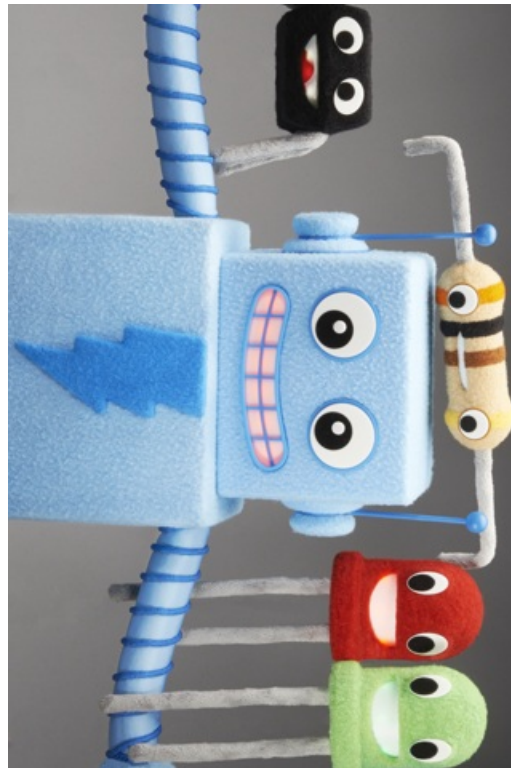




## Bitmaps (SPI Mode)

There is a built-in microSD card slot on the FeatherWing, and we can use that to load bitmap images! You will need a **microSD** card formatted **FAT16** or **FAT32** (they almost always are by default), and an SD card reader on whatever computer you're currently reading this with.

It's really easy to draw bitmaps. Lets start by downloading this image of Adabot and friends:



Download these two smaller images as well:

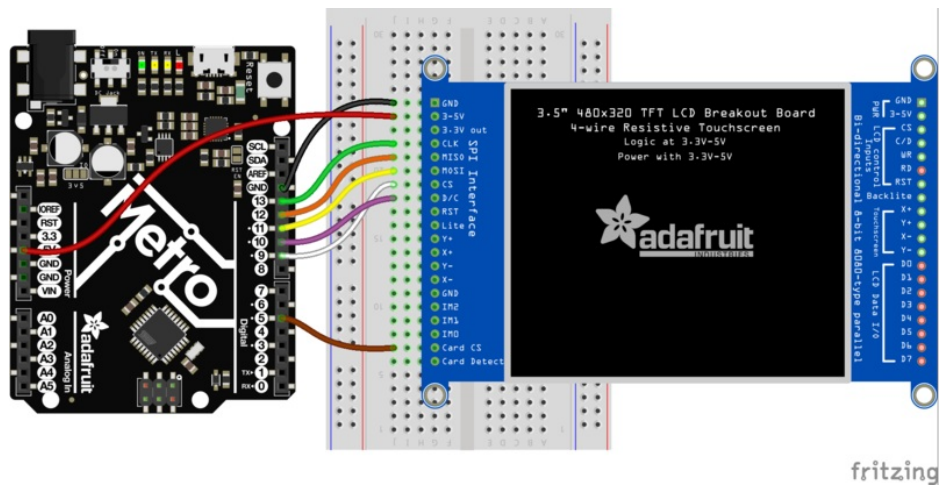


The files should be renamed (if needed) to **“adabot.bmp”**, **“parrot.bmp”** and **“wales.bmp”**, respectively, and copied to the base directory of the microSD card (*not* inside a folder).

(If it's easier, you can also find these images in the “images” folder within the Adafruit\_ImageReader library folder.)

You'll need to connect up the **CCS** pin to **Digital 5** on your Arduino and swap the **D/C** and **CS** pins as well. See the

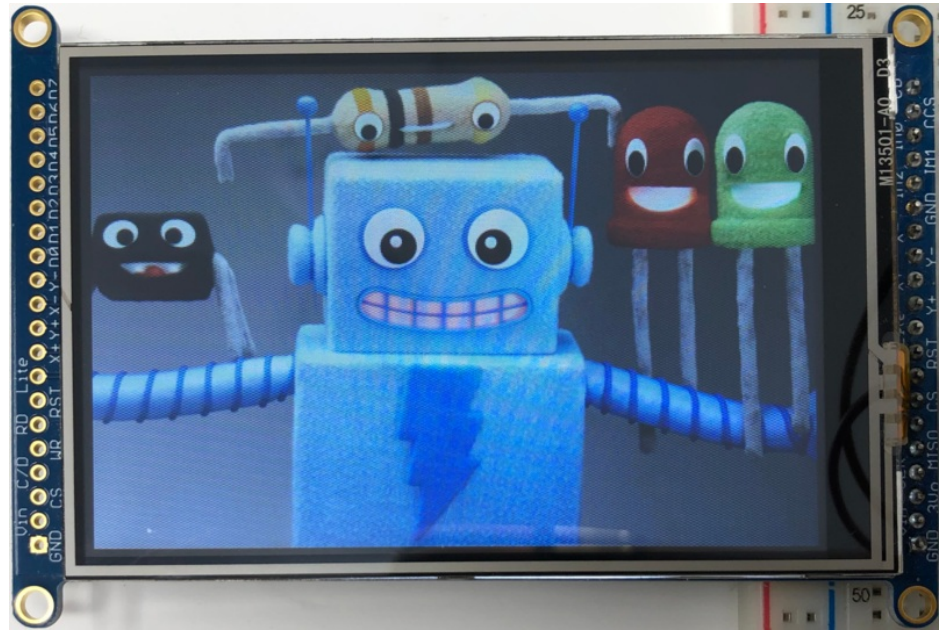
Fritzing diagram below.



<https://adafru.it/FjB>

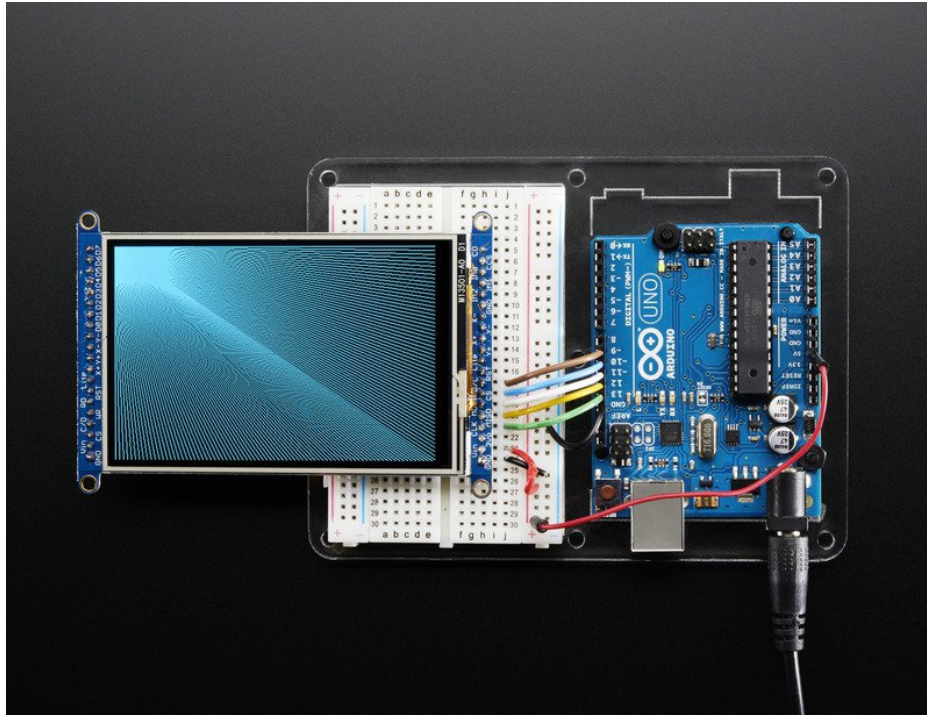
<https://adafru.it/FjB>

Insert the microSD card into the socket in the shield. Now select the sketch `file→examples→Adafruit_ImageReader→FeatherWingHX8357` and upload this example to your Feather + Wing. You will see the your electronic friends appear! (Plus parrots...and if you're using one of the more powerful Feather boards, a whole lot of dragons.)



The `Adafruit_ImageReader` library, which is being used here to display `.BMP` images, is [fully explained in its own page of the Adafruit\\_GFX guide \(https://adafru.it/DpM\)](https://adafru.it/DpM).

## Adafruit GFX library



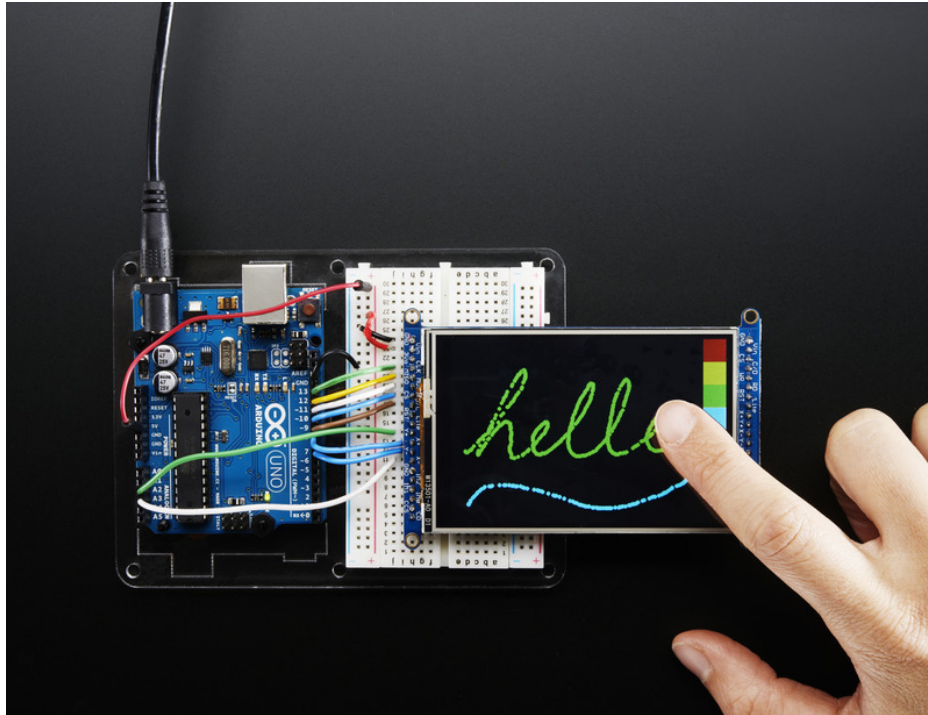
The Adafruit\_GFX library for Arduino provides a common syntax and set of graphics functions for all of our TFT, LCD and OLED displays. This allows Arduino sketches to easily be adapted between display types with minimal fuss...and any new features, performance improvements and bug fixes will immediately apply across our complete offering of color displays.

The GFX library is what lets you draw points, lines, rectangles, round-rects, triangles, text, etc.

Check out our detailed tutorial here <http://learn.adafruit.com/adafruit-gfx-graphics-library> (<https://adafru.it/aPx>)

It covers the latest and greatest of the GFX library. The GFX library is used in both 8-bit and SPI modes so the underlying commands (`drawLine()` for example) are identical!

## Touchscreen



The LCD has a 3.5" 4-wire resistive touch screen glued onto it. You can use this for detecting finger-presses, stylus', etc. You'll need 4 pins to talk to the touch panel, and at least 2 must be analog inputs. The touch screen is a completely separate part from the TFT, so be aware if you rotate the display or have the TFT off or reset, the touch screen doesn't "know" about it - its just a couple resistors!

We have a demo for the touchscreen + TFT that lets you 'paint' simple graphics. There's versions for both SPI and 8-bit mode and are included in the libraries. Just make sure you have gone thru the TFT test procedure already since this builds on that.



Remember, if you rotate the screen drawing with `setRotation()` you'll have to use `map()` or similar to flip around the X/Y coordinates for the touchscreen as well! It doesn't know about drawing rotation

## Download Library

Begin by grabbing our [analog/resistive touchscreen library from github \(https://adafru.it/aT1\)](https://adafru.it/aT1) (or just click the download button)

<https://adafru.it/dd0>

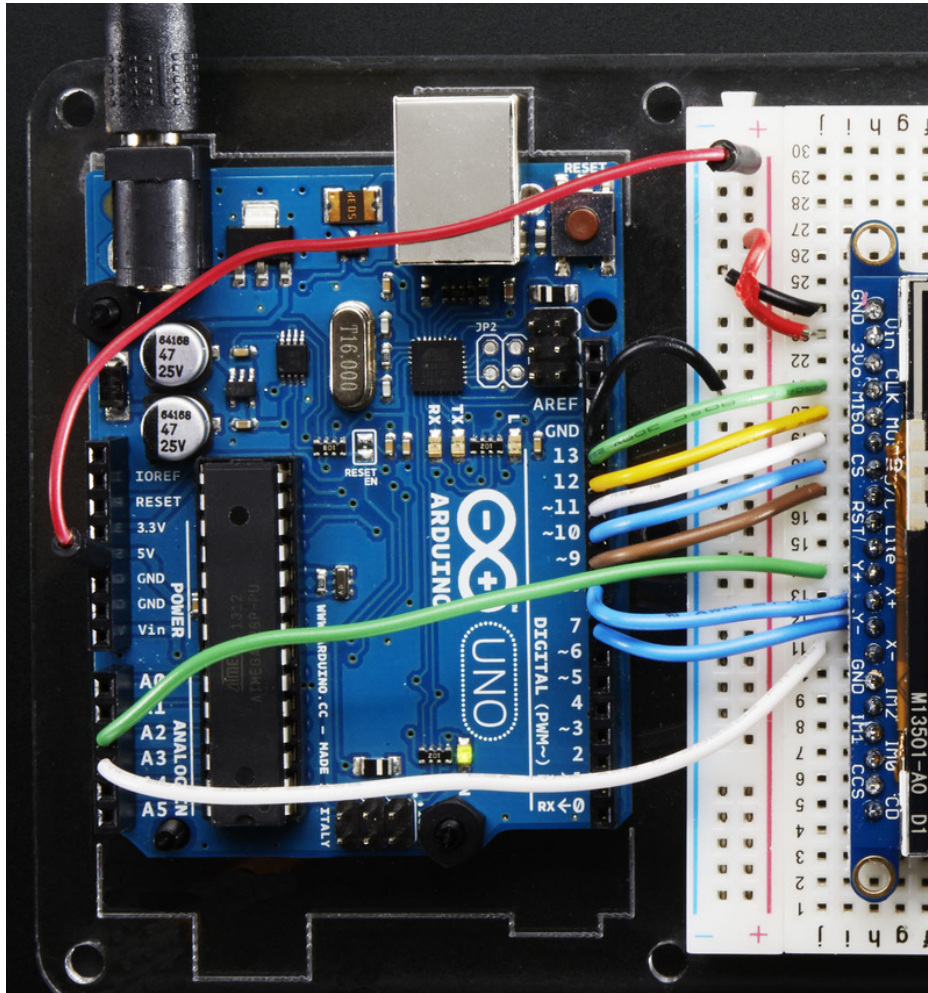
<https://adafru.it/dd0>

## Touchscreen Paint (SPI mode)

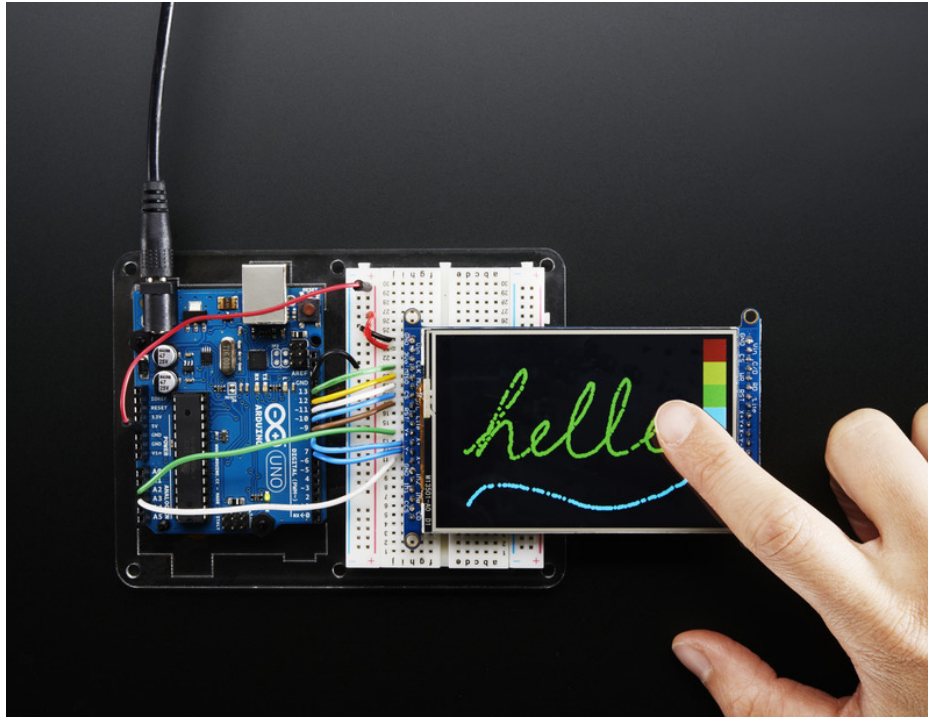
An additional 4 pins are required for the touchscreen. For the two analog pins, we'll use **A2** and **A3**. For the other two connections, you can pin any two digital pins but we'll be using **D8** and **D7** since they are available.

Wire the additional 4 pins as follows:

- Y+ to Arduino A2
- X+ to Arduino D8
- Y- to Arduino D7
- X- to Arduino A3



Load up the **breakoutTouchPaint** example from the **Adafruit\_HX8357** library and try drawing with your fingernail! You can select colors by touching the 'palette' of colors on the right



## Touchscreen Paint (8-Bit mode)

---

Another 4 pins seems like a lot since already 12 are taken up with the TFT but you can **reuse** some of the pins for the TFT LCD! This is because the resistance of the panel is high enough that it doesn't interfere with the digital input/output and we can query the panel in between TFT accesses, when the pins are not being used.

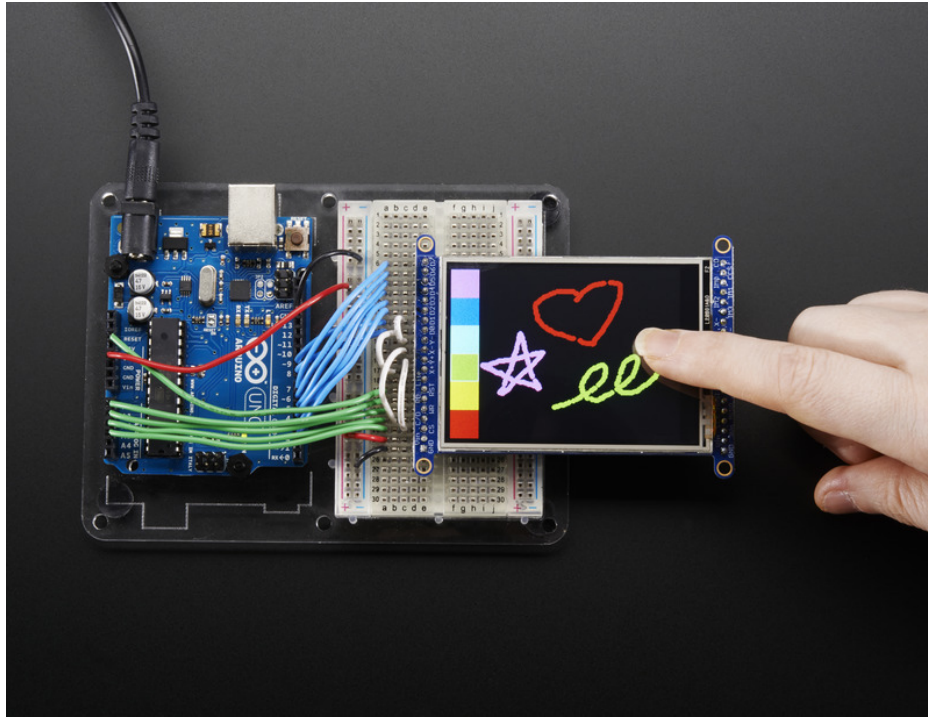
We'll be building on the wiring used in the previous drawing test for UNO

You can wire up the 4 touchscreen pins as follows. Starting from the top

- **Y-** connects to digital **#9** (also **D1**)
- The next one down (**X-**) connects to **Analog 2** (also **C/D**)
- The next one over (**Y+**) connects to **Analog 3** (also **CS**)
- The last one (**X+**) connects to digital **8**. (also **D0**)

The X- and Y+ pins pretty much have to connect to those analog pins (or to analog 4/5) but Y-/X+ can connect to any digital or analog pins.

The image below shows the wiring, its for the 2.8" TFT but its the same wiring setup

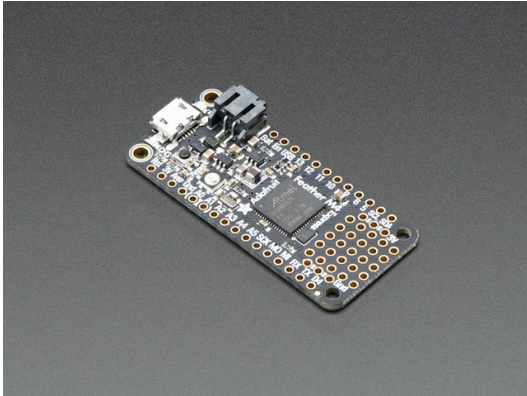


Load up the **tftpaint** example from the **Adafruit\_TFTLCD** library and try drawing with your fingernail! You can select colors by touching the 'palette' of colors on the right



## CircuitPython Displayio Quickstart

You will need a board capable of running CircuitPython such as the Metro M0 Express or the Metro M4 Express. You can also use boards such as the Feather M0 Express or the Feather M4 Express. We recommend either the Metro M4 or the Feather M4 Express because it's much faster and works better for driving a display. For this guide, we will be using a Feather M4 Express. The steps should be about the same for the Feather M0 Express or either of the Metros. If you haven't already, be sure to check out our [Feather M4 Express \(https://adafru.it/EEem\)](https://adafru.it/EEem) guide.



Adafruit Feather M4 Express - Featuring ATSAMD51

OUT OF STOCK

Out Of Stock

For this guide, we'll assume you have a Feather M4 Express. The steps should be about the same for the Feather M0 Express. To start, if you haven't already done so, follow the assembly instructions for the Feather M4 Express in our [Feather M4 Express guide \(https://adafru.it/EEem\)](https://adafru.it/EEem).

### Preparing the Breakout

Before using the TFT Breakout, you will need to solder the headers or some wires to it. Be sure to check out the [Adafruit Guide To Excellent Soldering \(https://adafru.it/drl\)](https://adafru.it/drl). Also, follow the [SPI Wiring & Test \(https://adafru.it/FxS\)](https://adafru.it/FxS) page of this guide to be sure your display is setup for SPI. After that, the breakout should be ready to go.

### Required CircuitPython Libraries

To use this display with `displayio`, there is only one required library.

<https://adafru.it/EGf>

<https://adafru.it/EGf>

First, make sure you are running the [latest version of Adafruit CircuitPython \(https://adafru.it/Amd\)](https://adafru.it/Amd) for your board.

Next, you'll need to install the necessary libraries to use the hardware--carefully follow the steps to find and install these libraries from [Adafruit's CircuitPython library bundle \(https://adafru.it/zdx\)](https://adafru.it/zdx). Our introduction guide has [a great page on how to install the library bundle \(https://adafru.it/ABU\)](https://adafru.it/ABU) for both express and non-express boards.

Remember for non-express boards, you'll need to manually install the necessary libraries from the bundle:

- `adafruit_hx8357`

Before continuing make sure your board's lib folder or root filesystem has the `adafruit_hx8357` file copied over.

## Code Example Additional Libraries

For the Code Example, you will need an additional library. We decided to make use of a library so the code didn't get overly complicated.

<https://adafru.it/FiA>

<https://adafru.it/FiA>

Go ahead and install this in the same manner as the driver library by copying the `adafruit_display_text` folder over to the `lib` folder on your CircuitPython device.

## CircuitPython Code Example

Temporarily unable to load content:

Let's take a look at the sections of code one by one. We start by importing the board so that we can initialize `SPI`, `displayio`, `terminalio` for the font, a `label`, and the `adafruit_hx8357` driver.

```
import board
import displayio
import terminalio
from adafruit_display_text import label
from adafruit_hx8357 import HX8357
```

Next we release any previously used displays. This is important because if the Feather is reset, the display pins are not automatically released and this makes them available for use again.

```
displayio.release_displays()
```

Next, we set the SPI object to the board's SPI with the easy shortcut function `board.SPI()`. By using this function, it finds the SPI module and initializes using the default SPI parameters. Next we set the Chip Select and Data/Command pins that will be used.

```
spi = board.SPI()
tft_cs = board.D9
tft_dc = board.D10
```

In the next line, we set the display bus to FourWire which makes use of the SPI bus.

```
display_bus = displayio.FourWire(spi, command=tft_dc, chip_select=tft_cs)
```

Finally, we initialize the driver with a width of 480 and a height of 320. If we stopped at this point and ran the code, we would have a terminal that we could type at and have the screen update.

```
display = HX8357(display_bus, width=480, height=320)
```



Next we create a background splash image. We do this by creating a group that we can add elements to and adding that group to the display. In this example, we are limiting the maximum number of elements to 10, but this can be increased if you would like. The display will automatically handle updating the group.

```
splash = displayio.Group(max_size=10)
display.show(splash)
```

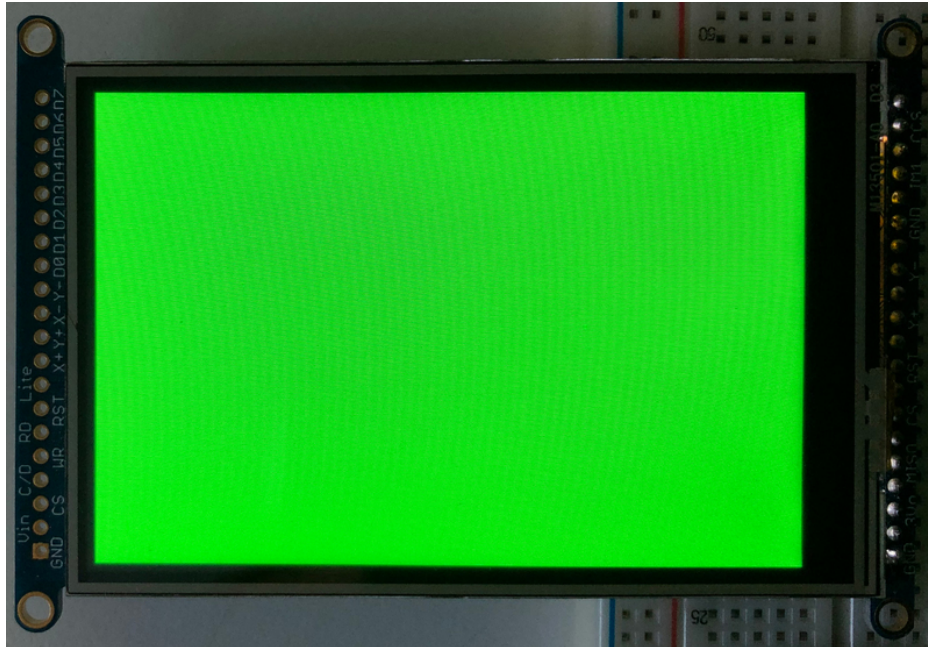
After that we create a Bitmap which is like a canvas that we can draw on. In this case we are creating the Bitmap to be the same size as the screen, but only have one color. The Bitmaps can currently handle up to 256 different colors. We create a Palette with one color and set that color to 0x00FF00 which happens to be green. Colors are Hexadecimal values in the format of RRGGBB. Even though the Bitmaps can only handle 256 colors at a time, you get to define what those 256 different colors are.

```
color_bitmap = displayio.Bitmap(480, 320, 1)
color_palette = displayio.Palette(1)
color_palette[0] = 0x00FF00 # Bright Green
```

With all those pieces in place, we create a TileGrid by passing the bitmap and palette and draw it at (0, 0) which represents the display's upper left.

```
bg_sprite = displayio.TileGrid(color_bitmap,
                               pixel_shader=color_palette,
                               x=0, y=0)
splash.append(bg_sprite)
```

This creates a solid green background which we will draw on top of.



Next we will create a smaller purple rectangle. The easiest way to do this is the create a new bitmap that is a little smaller than the full screen with a single color and place it in a specific location. In this case we will create a bitmap that is 20 pixels smaller on each side. The screen is 480x320, so we'll want to subtract 40 from each of those numbers.

We'll also want to place it at the position (20, 20) so that it ends up centered.

```
# Draw a smaller inner rectangle
inner_bitmap = displayio.Bitmap(440, 280, 1)
inner_palette = displayio.Palette(1)
inner_palette[0] = 0xAA0088 # Purple
inner_sprite = displayio.TileGrid(inner_bitmap,
                                  pixel_shader=inner_palette,
                                  x=20, y=20)

splash.append(inner_sprite)
```

Since we are adding this after the first rectangle, it's automatically drawn on top. Here's what it looks like now.



Next let's add a label that says "Hello World!" on top of that. We're going to use the built-in Terminal Font and scale it up by a factor of three. To scale the label only, we will make use of a subgroup, which we will then add to the main group.

Labels are centered vertically, so we'll place it at 160 for the Y coordinate, and around 137 pixels make it appear to be centered horizontally, but if you want to change the text, change this to whatever looks good to you. Let's go with some yellow text, so we'll pass it a value of `0xFFFF00`.

```
# Draw a label
text_group = displayio.Group(max_size=10, scale=3, x=137, y=160)
text = "Hello World!"
text_area = label.Label(terminalio.FONT, text=text, color=0xFFFF00)
text_group.append(text_area) # Subgroup for text scaling
splash.append(text_group)
```

Finally, we place an infinite loop at the end so that the graphics screen remains in place and isn't replaced by a terminal.



```
while True:  
    pass
```

## Using Touch

We won't be covering how to use the touchscreen with CircuitPython in this guide, but the library required for enabling resistive touch is the [Adafruit\\_CircuitPython\\_STMPE610 \(https://adafru.it/Fsz\)](https://adafru.it/Fsz) library.

## Where to go from here

---

Be sure to check out this excellent [guide to CircuitPython Display Support Using displayio \(https://adafru.it/EGh\)](https://adafru.it/EGh)

## Troubleshooting

---

- Display does not work on initial power but does work after a reset.

The display driver circuit needs a small amount of time to be ready after initial power. If your code tries to write to the display too soon, it may not be ready. It will work on reset since that typically does not cycle power. If you are having this issue, try adding a small amount of delay before trying to write to the display.

In Arduino, use `delay()` to add a few milliseconds before calling `tft.begin()`. Adjust the amount of delay as needed to see how little you can get away with for your specific setup.





# Downloads

## Datasheets & Files

- [Datasheet for the HX8357D chipset controller \(https://adafru.it/dQQ\)](https://adafru.it/dQQ)
- [Datasheet for the 3.5" TFT display \(raw\) \(https://adafru.it/dR4\)](https://adafru.it/dR4)
- [EagleCAD PCB files on GitHub \(https://adafru.it/pBE\)](https://adafru.it/pBE)
- [Fritzing object in Adafruit Fritzing library \(https://adafru.it/aP3\)](https://adafru.it/aP3)

## Schematic and PCB Print

