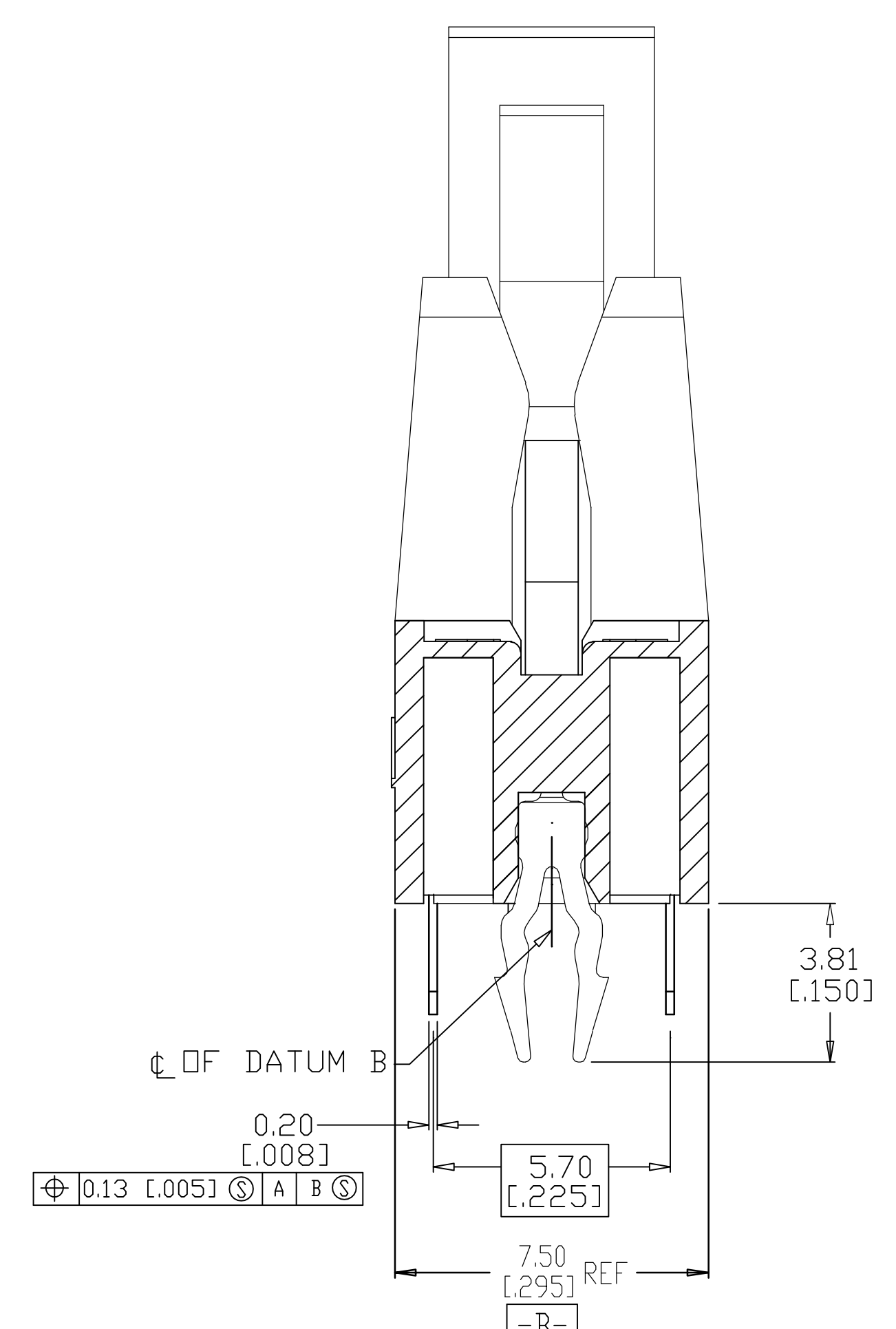


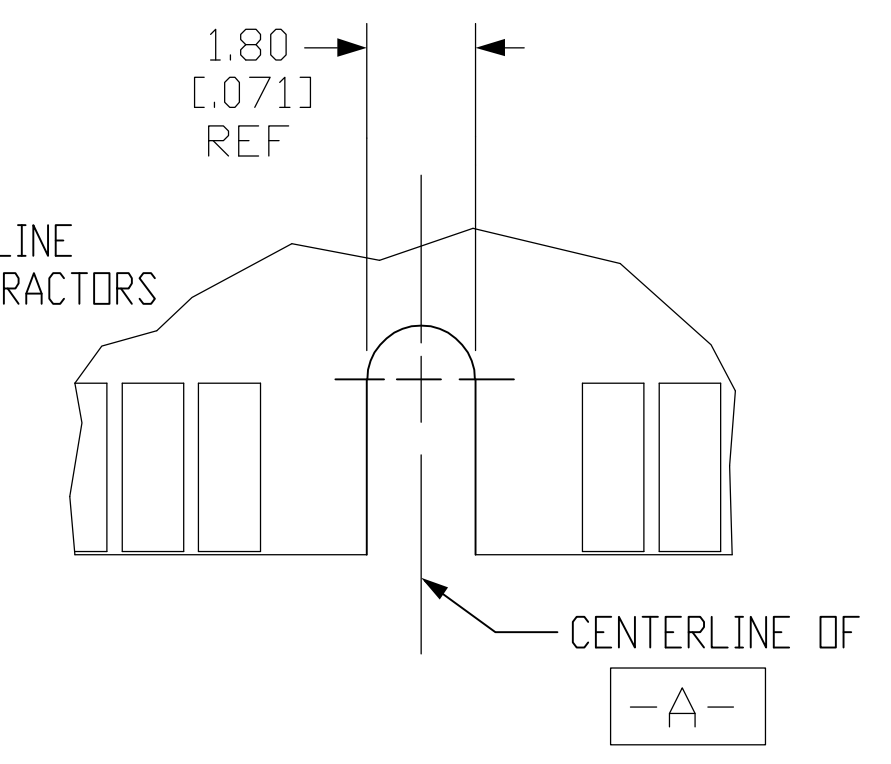
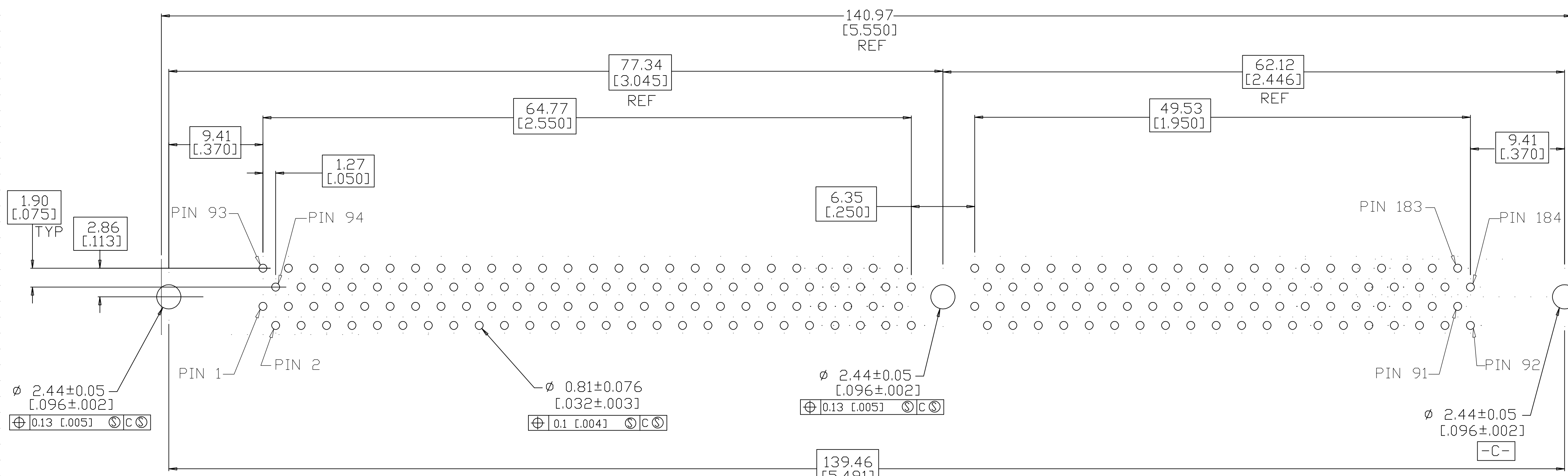
SECTION Y-Y  
CIRCUITS 1 AND 93  
SCALE 8:1



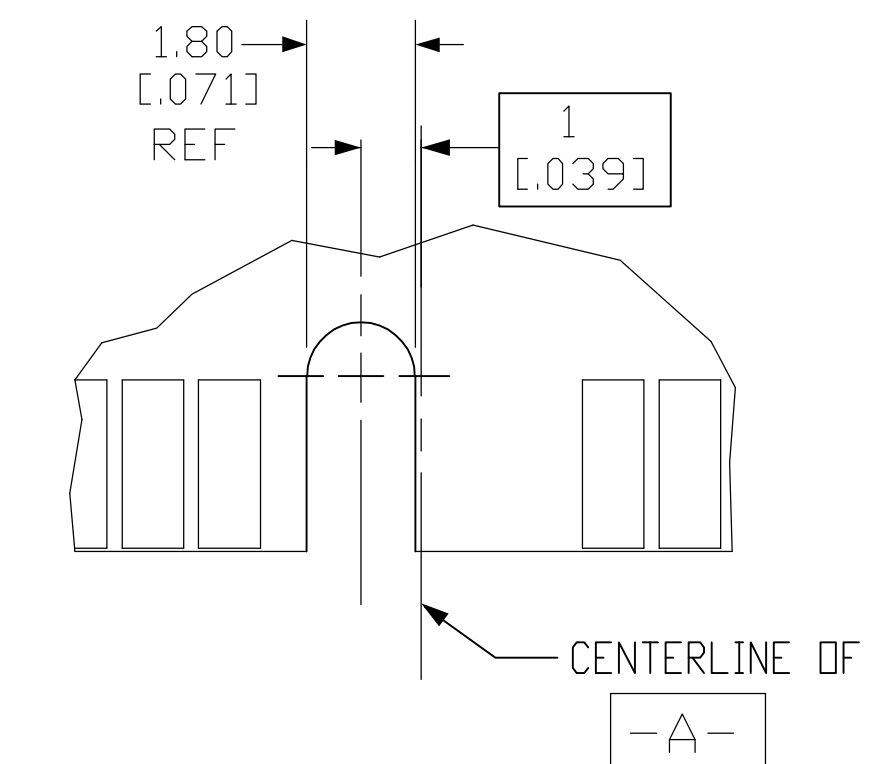
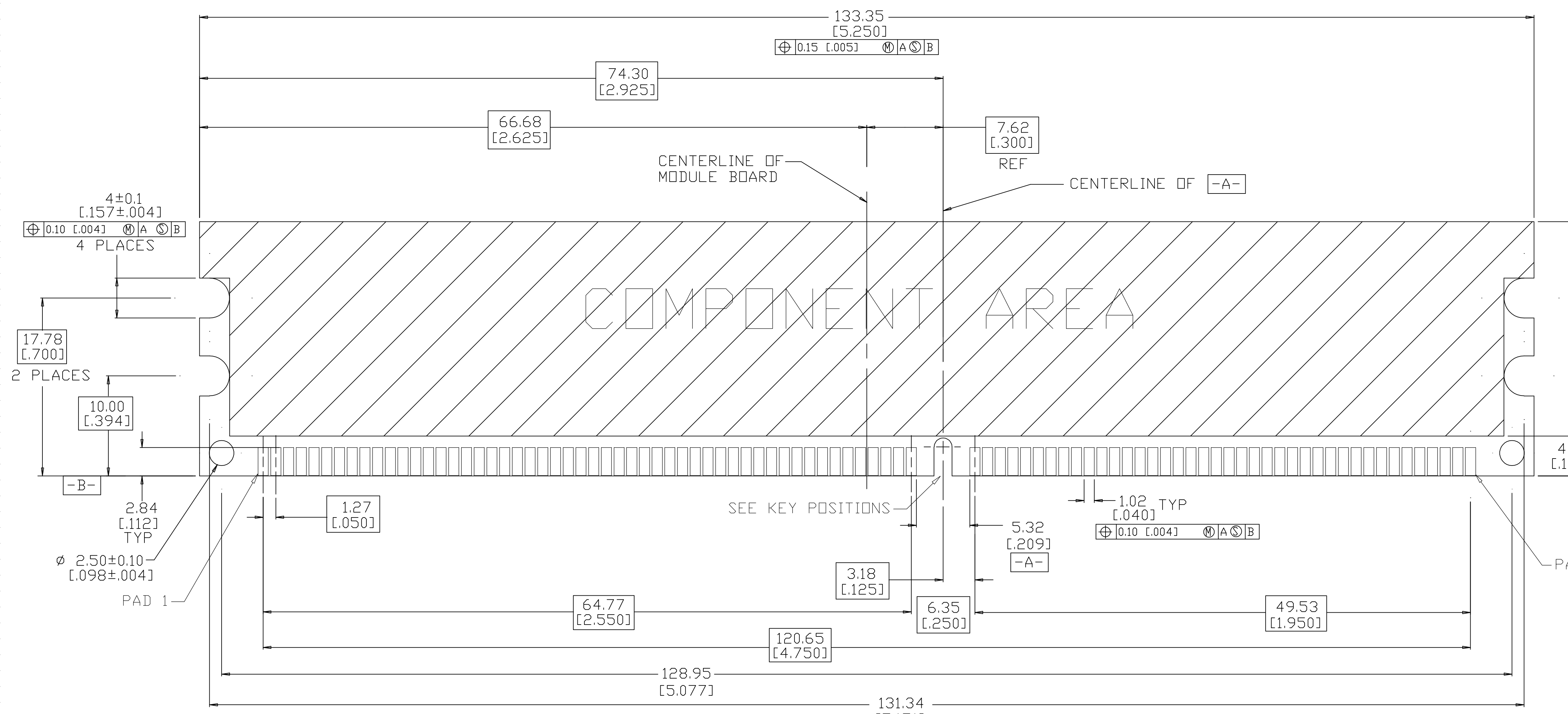
SECTION X-X  
SCALE 8:1

- MATERIAL**  
HOUSING: GLASS FILLED HIGH TEMPERATURE NYLON, COLOR: BLACK  
CONTACT: PHOS. BRONZE, C51100, TEMPER H06.  
EXTRACTOR MATERIAL: GLASS FILLED HIGH TEMPERATURE NYLON, COLOR: NATURAL, OFF-WHITE.  
RETENTION POST: STAINLESS STEEL, AMP 100-309.
- FINISH**  
CONTACT:  
NICKEL PLATE ALL OVER 0.00127-0.0019 [0.00050-.000075] THICK PER AMP SPEC 112-25-2.  
GOLD PLATE IN INTERFACE AREA 0.00076 [0.00030] MIN THICK PER AMP SPEC 112-162-5.  
MATTE TIN PLATE IN SOLDER TAIL AREA .00381-.00635 [0.00150-.000250] THICK PER AMP SPEC 112-65-1.

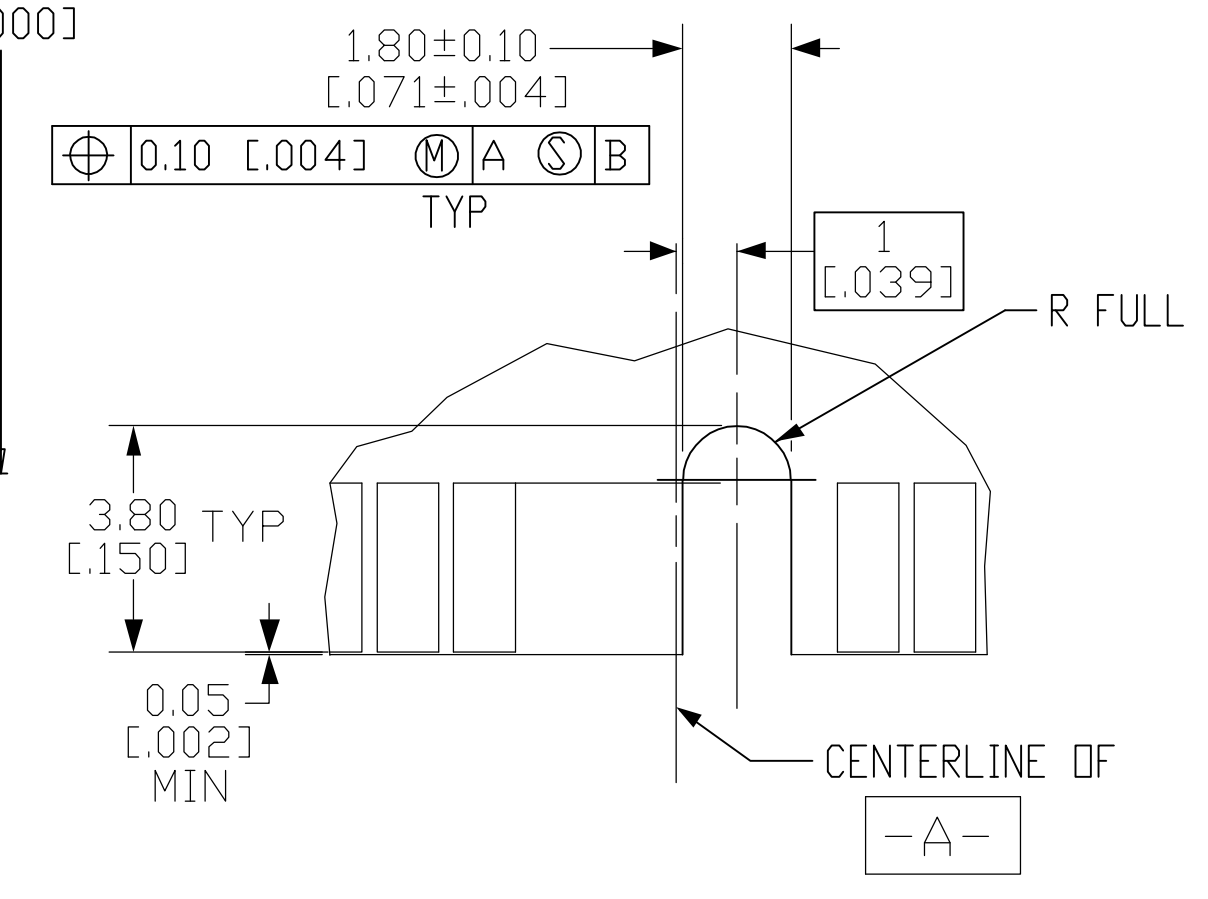
2.79 [0.110]	DETAIL B	184 POSN. DIMM2P, 2.5V, POST-PLATED CONTACTS	5390486-1
SOLDERTAIL LENGTH DIM "A"	KEY POSITION	DESCRIPTION	PART NUMBER
THIS DRAWING IS A CONTROLLED DOCUMENT.		DWN: R. RICHARDSON 15AUG05 CHK: M. YEOMANS 15AUG05 APVD: M. YEOMANS 15AUG05 Tyco Electronics Corporation Harrisburg, Pa 17105-3608	
DIMENSIONS: mm [INCHES] TOLERANCES UNLESS OTHERWISE SPECIFIED: 0 PLC ± - 1 PLC ± - 2 PLC ± 0.13 [0.005] 3 PLC ± - 4 PLC ± - ANGLES ± -		PRODUCT SPEC: 108-1753 APPLICATION SPEC: 114-1115 SIZE: 30 MICROINCH GOLD PLATED CONTACTS DRAWING NO: 00779 CUSTOMER DRAWING	
MATERIAL: 1		FINISH: 2	
SCALE: 1:1		SHEET 1 OF 2	



DETAIL A  
 SCALE 8:1



DETAIL B  
 SCALE 8:1



DETAIL C  
 SCALE 8:1

KEY POSITIONS

RECOMMENDED MODULE LAYOUT  
 SEE JEDEC SPEC MO-206 FOR COMPLETE MODULE DETAILS  
 1.27 ± 0.10 [0.050 ± 0.004] THICK ACROSS CONTACT PADS

THIS DRAWING IS A CONTROLLED DOCUMENT.		DWN R. RICHARDSON 15AUG05	15AUG05	Tyco Electronics Corporation Harrisburg, Pa 17105-3608
DIMENSIONS: mm [INCHES]		CHK M. YEOMANS 15AUG05	15AUG05	
TOLERANCES UNLESS OTHERWISE SPECIFIED:		APVD M. YEOMANS 15AUG05	15AUG05	SOCKET ASSEMBLY, DIMM2P 184 PIN, DDR, 30 MICROINCH GOLD PLATED CONTACTS
0 PLC ±		PRODUCT SPEC	108-1753	
1 PLC ±		APPLICATION SPEC	114-1115	
2 PLC ±		SIZE	A1	
3 PLC ±		WEIGHT	00779	CUSTOMER DRAWING SCALE 1:1 SHEET 2 OF 2 REV A
ANGLES ±		FINISH	5390486	