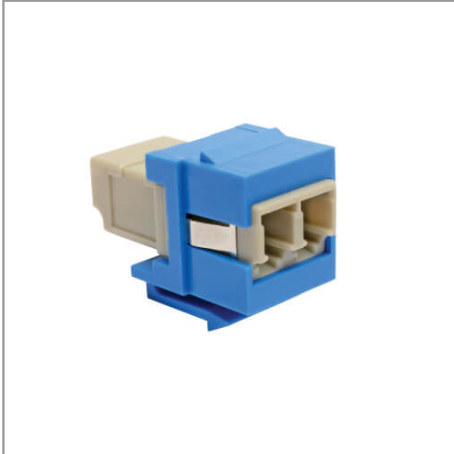


Duplex Multimode Fiber Coupler, Keystone Jack - LC to LC, Blue

MODEL NUMBER: N455-000-BL-KJ



This coupler links two fiber optic cables with LC connectors for duplex or simplex cable assemblies in a faceplate or keystone panel.

Features

LC Duplex Coupler Extends Length of Fiber Optic Cable Run Tripp Lite's fiber optic LC coupler connects two 62.5/125 or 50/125 multimode fiber cables with LC connectors to extend the length of the cable run. The duplex adapter accepts two simplex connectors or one duplex connector.

Mounts in a Keystone Patch Panel or Wall Plate This LC to LC fiber coupler is designed to snap easily into a keystone patch panel or wall plate. This allows you to route cables through walls and provides a convenient connection to your fiber network.

Lifetime Limited Warranty This multimode fiber coupler comes with a lifetime limited warranty.

Specifications

OVERVIEW	
UPC Code	03733222329
Technology	Multimode
PHYSICAL	
Color	Blue
Connector Color	Blue
Number of Fibers	2
ENVIRONMENTAL	
Operating Temperature Range	-40° to 167°F (-40° to 75°C)

Highlights

- Dual LC/LC coupler for extending cables in a faceplate or keystone panel
- High-precision mating structure with low insertion loss
- Duplex adapter accepts two simplex connectors or one duplex connector
- Works with 62.5/125 or 50/125 multimode fiber cables

Applications

- Joins two LC fiber optic cables to extend a cable run
- Allows for customizing a keystone wall plate for LC connectors in a fiber network

Package Includes

- N455-000-BL-KJ Duplex Multimode Fiber Coupler, Keystone Jack (LC/LC) – Blue

Storage Temperature Range	-40° to 167°F (-40° to 75°C)
Relative Humidity	0% to 90% RH
CONNECTIONS	
Side A - Connector 1	LC DUPLEX (FEMALE)
Side B - Connector 1	LC DUPLEX (FEMALE)
FEATURES & SPECIFICATIONS	
Push/Pull Tabs	No
STANDARDS & COMPLIANCE	
Product Compliance	RoHS
WARRANTY & SUPPORT	
Product Warranty Period (Worldwide)	Lifetime limited warranty