

MATERIALS AND FINISHES

BODY BRASS
PLATED TIN

CENTER CONTACT BRASS
PLATED GOLD

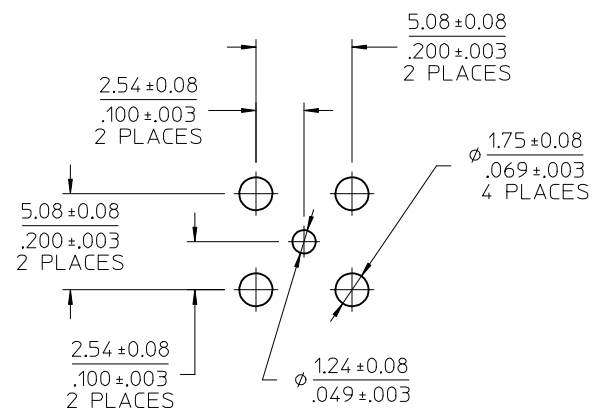
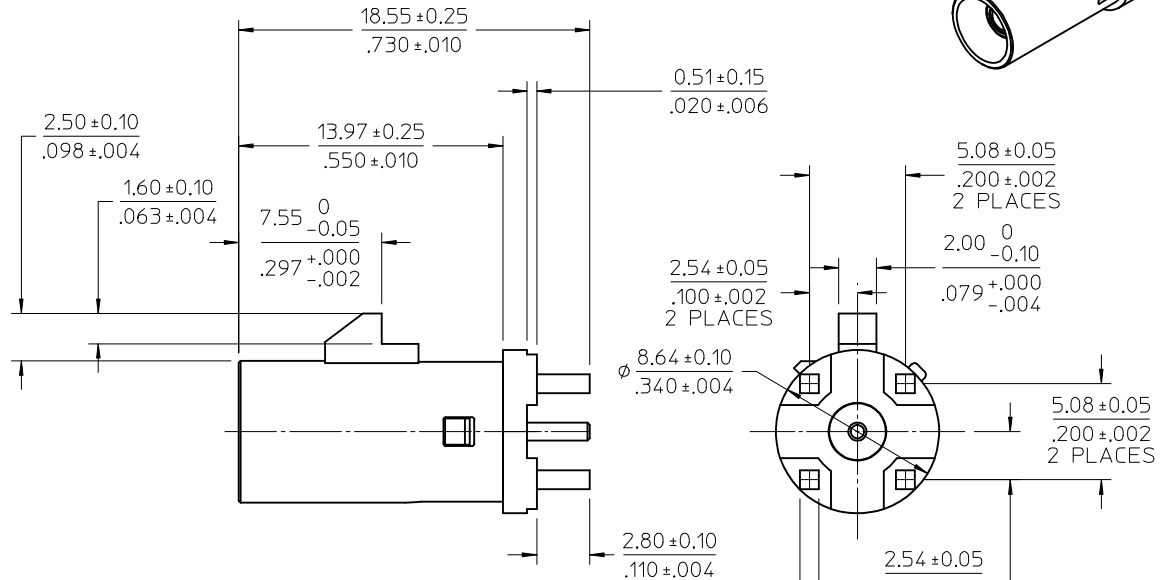
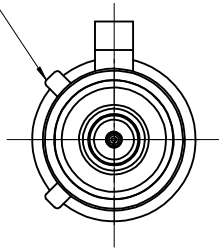
OUTER CASING HIGH TEMPERATURE PLASTIC
KEYING SEE TABLE
COLOR SEE TABLE

INSULATOR TEFLON

RETENTION SPECIFICATION

THE FAKRA CONNECTOR SHROUD WILL WITHSTAND
A LONGITUDINAL FORCE OF 110 N(24.73 LBS)

FAKRA CONNECTOR
KEYING CODE D SHOWN

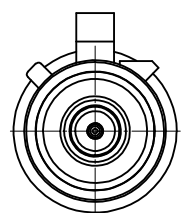


RECOMMENDED HOLE LAYOUT

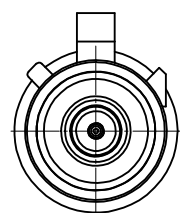
PS-89675-3310	PRODUCT SPECIFICATION
MIL-STD-348A, FIG. 311.1	SMB INTERFACE
SPECIFICATION	DESCRIPTION

ADDED TOLERANCE AND DIM. PER RF17-E038		QUALITY SYMBOLS
EC NO: URF2017-0309		$\nabla=0$
DRWNLIN 2017/02/23		$\nabla=0$
CHKD:	APPR: YCHENG	DESCRIPTION
REV:	A2	2017/03/13

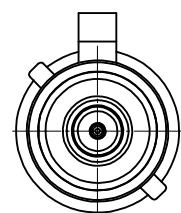
GENERAL TOLERANCES (UNLESS SPECIFIED)	DIMENSION STYLE	SCALE	DESIGN UNITS	THIRD ANGLE PROJECTION
4 PLACES $\pm .010$	MM/IN	METRIC		
3 PLACES $\pm .025$				
2 PLACES $\pm .050$				
1 PLACE $\pm .100$				
ANGULAR $\pm 2^\circ$				
DRAFT WHERE APPLICABLE MUST REMAIN WITHIN DIMENSIONS	DRAWN BY	DATE	TITLE	
	JOYCE	2008/09/05	SMB JACK, FAKRA, STR	
	CHECKED BY	DATE	PCB, 50 OHM	
	KERRIE	2008/09/05	SMB-J/PCB	
	APPROVED BY	DATE		
	MISEN	2008/09/05		
	MATERIAL NO.	DOCUMENT NO.		
	SEE SHEET 2	SD-73403-507		
	SIZE			SHEET NO.
				1 OF 3
THIS DRAWING CONTAINS INFORMATION THAT IS PROPRIETARY TO MOLEX INCORPORATED AND SHOULD NOT BE USED WITHOUT WRITTEN PERMISSION				



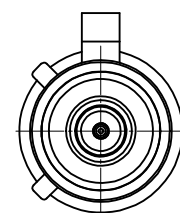
CODE - A



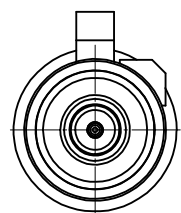
CODE - B



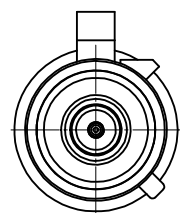
CODE - C



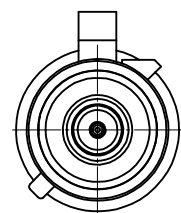
CODE - D



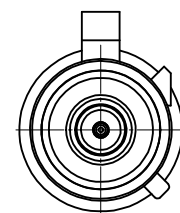
CODE - E



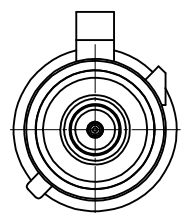
CODE - F



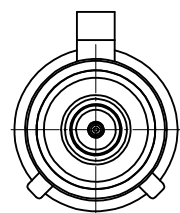
CODE - G



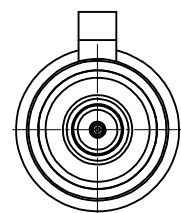
CODE - H



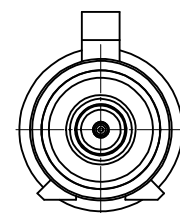
CODE - I



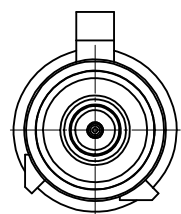
CODE - K



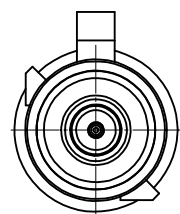
CODE - Z



CODE - L



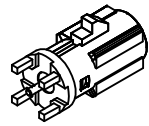
CODE - M



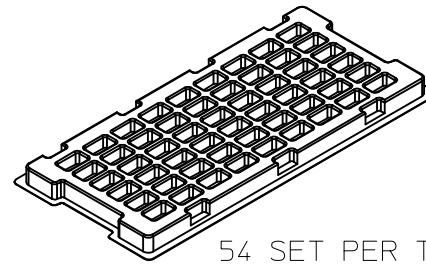
CODE - N

N	PASTEL GREEN	73403-5083
M	PASTEL ORANGE	73403-5082
L	CARMINE RED	73403-5081
Z	WATER BLUE	73403-5080
K	CURRY YELLOW	73403-5079
I	BEIGE	73403-5078
H	VIOLET	73403-5077
G	GRAY	73403-5076
F	BROWN	73403-5075
E	GREEN	73403-5074
D	BORDEAUXVIOLET	73403-5073
C	BLUE	73403-5072
B	CREAM WHITE	73403-5071
A	BLACK	73403-5070
KEYING CODE	COLOR	PART NO.

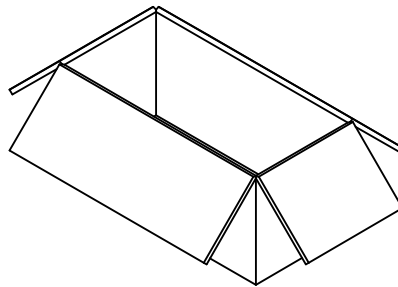
CHG: REFER TO SHEET 1 EC NO: URF2017-0309 DRWNLIN 2017/02/23 CHKD: APPR: YCHENG 2017/03/13	QUALITY SYMBOLS ▽=0 ▽=0	GENERAL TOLERANCES (UNLESS SPECIFIED) <table border="1"> <tr> <td></td> <td>mm</td> <td>INCH</td> </tr> <tr> <td>4 PLACES</td> <td>± ---</td> <td>± ---</td> </tr> <tr> <td>3 PLACES</td> <td>± ---</td> <td>± 0.010</td> </tr> <tr> <td>2 PLACES</td> <td>± 0.25</td> <td>± ---</td> </tr> <tr> <td>1 PLACE</td> <td>± ---</td> <td>± ---</td> </tr> </table> ANGULAR ± 2 °		mm	INCH	4 PLACES	± ---	± ---	3 PLACES	± ---	± 0.010	2 PLACES	± 0.25	± ---	1 PLACE	± ---	± ---	DIMENSION STYLE MM/IN DRAWN BY DATE JOYCE 2008/09/05 CHECKED BY DATE KERRIE 2008/09/05 APPROVED BY DATE MISEN 2008/09/05	SCALE DESIGN UNITS METRIC THIRD ANGLE PROJECTION	TITLE SMB JACK, FAKRA, STR PCB, 50 OHM SMB-J/PCB
		mm	INCH																	
	4 PLACES	± ---	± ---																	
	3 PLACES	± ---	± 0.010																	
2 PLACES	± 0.25	± ---																		
1 PLACE	± ---	± ---																		
DRAFT WHERE APPLICABLE MUST REMAIN WITHIN DIMENSIONS	MATERIAL NO. SEE TABLE	DOCUMENT NO. SD-73403-507	SHEET NO. 2 OF 3																	
SIZE C	THIS DRAWING CONTAINS INFORMATION THAT IS PROPRIETARY TO MOLEX INCORPORATED AND SHOULD NOT BE USED WITHOUT WRITTEN PERMISSION																			
MOLEX MOLEX INCORPORATED																				



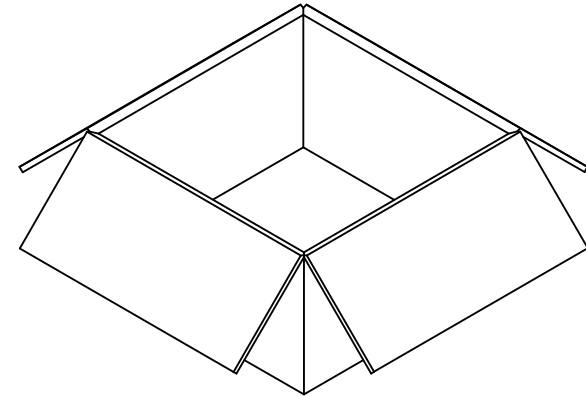
P/N 73403-507X



54 SET PER TRAY
TRAY P/N 89707-0220



540 SET PER INNER
CARTON BOX
P/N 96707-0001



1080 SET PER OUTER
CARTON BOX
P/N 96708-0005

SEE SHEET 1 IEC NO: URF2017-0309 2017/02/23 DRWNLIN CHKD: APPR: YCHENG 2017/03/13	QUALITY SYMBOLS =0 =0	GENERAL TOLERANCES (UNLESS SPECIFIED)		DIMENSION STYLE MM/IN	SCALE DESIGN UNITS METRIC	THIRD ANGLE PROJECTION																		
	<table border="1"> <tr> <th></th> <th>mm</th> <th>INCH</th> </tr> <tr> <td>4 PLACES</td> <td>± .---</td> <td>± .---</td> </tr> <tr> <td>3 PLACES</td> <td>± .---</td> <td>± 0.010</td> </tr> <tr> <td>2 PLACES</td> <td>± 0.25</td> <td>± .---</td> </tr> <tr> <td>1 PLACE</td> <td>± .---</td> <td>± .---</td> </tr> </table>		mm	INCH	4 PLACES		± .---	± .---	3 PLACES	± .---	± 0.010	2 PLACES	± 0.25	± .---	1 PLACE	± .---	± .---	<table border="1"> <tr> <th>mm</th> <th>INCH</th> </tr> <tr> <td>ANGULAR</td> <td>± 2 °</td> </tr> </table>	mm	INCH	ANGULAR	± 2 °	DRAWN BY JOYCE	DATE 2008/09/05
		mm	INCH																					
	4 PLACES	± .---	± .---																					
3 PLACES	± .---	± 0.010																						
2 PLACES	± 0.25	± .---																						
1 PLACE	± .---	± .---																						
mm	INCH																							
ANGULAR	± 2 °																							
DRAFT WHERE APPLICABLE MUST REMAIN WITHIN DIMENSIONS	SEE SHEET 2	CHECKED BY KERRIE	DATE 2008/09/05	APPROVED BY MISEN	DATE 2008/09/05	MOLEX INCORPORATED																		
A2	REV DESCRIPTION	MATERIAL NO.	DOCUMENT NO. SD-73403-507	SHEET NO. 3 OF 3	THIS DRAWING CONTAINS INFORMATION THAT IS PROPRIETARY TO MOLEX INCORPORATED AND SHOULD NOT BE USED WITHOUT WRITTEN PERMISSION																			