

6

5

4

3

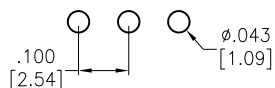
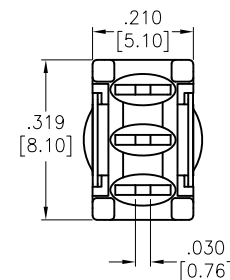
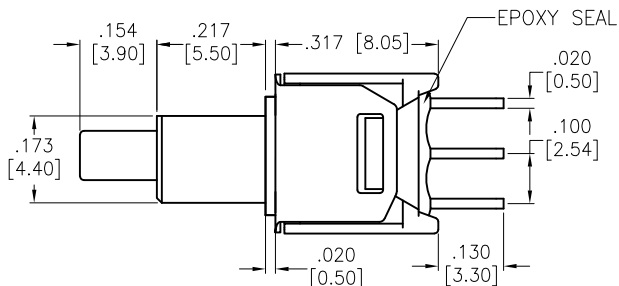
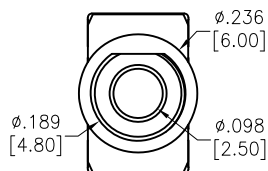
2

1

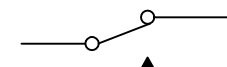
APPROVED: \_\_\_\_\_

DATE: \_\_\_\_\_ TITLE: \_\_\_\_\_

Rev	AWO #	Description	Date	Appr
-		RELEASED	3/5/21	



RECOMMENDED PCB LAYOUT



CIRCUIT DIAGRAM (SPDT) ON-MOMENTARY

SPECIFICATIONS:

Material:  
 Movable Contact: Copper Alloy, Silver Plated  
 Terminal: Copper Alloy, Silver Plated  
 Electrical:  
 Rating: 1 Amps with resistive load @ 125VAC or 28VDC  
 Contact resistance: 20 mΩ max  
 Insulation resistance: 1,000 Mohms min  
 Dielectric withstanding voltage: 1,500V RMS @Sea level  
 Temperature Rating:  
 Operating temperature: -30°C to +85°C

Environmental:  
 Lead free, RoHS compliant



UNLESS OTHERWISE SPECIFIED ALL DIMENSIONS ARE INCHES [MM] TOLERANCES: EXCEPT AS NOTED INCHES HOLES .X ± .10 Ø.X ± .10 .XX ± .020 Ø.XX ± .015 .XXX ± .015 Ø.XXX ± .010		<b>ADAM TECH</b> 909 Rahway Avenue, Union, NJ 07083 Phone: 908-687-5000 Fax: 908-687-5710	
APPROVALS DRAWN WX 3/5/21 CHECKED AC 3/5/21 APPROVED		TITLE SUB-MINIATURE PUSHBUTTON SWITCH, ON-MOMENTARY, SPDT, SILVER PLATED, PCB TYPE SIZE X PART NO. SW-PB9-AB00BQE-5 REV. - REF: S00198T SCALE: NTS SHEET 1 OF 1	

6

5

4

3

2

1