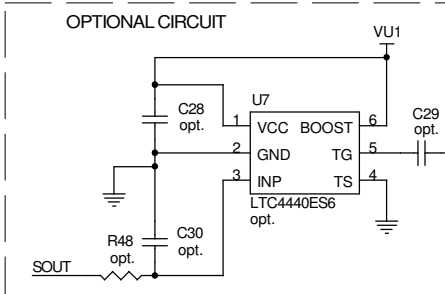
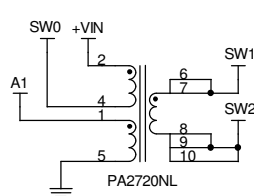


CO3: SEE QUICK START GUIDE  
(INSTALL 330 OHMS RESISTOR IN PLACE OF CO3)

OPTIONAL FOOTPRINT FOR T1



**\*\* FOR ASSEMBLY**

VERSIONS	+VIN	+VOUT
- A	34V - 75V	3.3V @ 30A
- B	18V - 72V	5V @ 25A
- C	18V - 72V	12V @ 8A
- D	18V - 72V	24V @ 4A
- E	36V - 72V	5V @ 12A
- F	9V - 36V	3.3V @ 20A (5V @ 15A) *
- G	9V - 36V	12V @ 5A (18V @ 4A) *
- H	9V - 36V *	48V @ 1.5A

NOTES: UNLESS OTHERWISE SPECIFIED

- ALL RESISTORS ARE 0603.
  - ALL CAPACITORS ARE 0603.
- \* SEE QUICK START GUIDE.

CUSTOMER NOTICE		CONTRACT NO.			
LINEAR TECHNOLOGY HAS MADE A BEST EFFORT TO DESIGN A CIRCUIT THAT MEETS CUSTOMER-SUPPLIED SPECIFICATIONS; HOWEVER, IT REMAINS THE CUSTOMER'S RESPONSIBILITY TO VERIFY PROPER AND RELIABLE OPERATION IN THE ACTUAL APPLICATION. COMPONENT SUBSTITUTION AND PRINTED CIRCUIT BOARD LAYOUT MAY SIGNIFICANTLY AFFECT CIRCUIT PERFORMANCE OR RELIABILITY. CONTACT LINEAR TECHNOLOGY APPLICATIONS ENGINEERING FOR ASSISTANCE.					
THIS CIRCUIT IS PROPRIETARY TO LINEAR TECHNOLOGY AND SUPPLIED FOR USE WITH LINEAR TECHNOLOGY PARTS.		APPROVALS	DATE	TITLE <b>LT1952EGN-1, LT4430ES6</b> <b>ISOLATED FORWARD DC/DC CONVERTER</b>	
		DRAWN	J. Wu	10/8/07	SIZE
		ENGINEER	G. Perica	10/8/07	CAGE CODE
		CHECKED			DWG NO
		APPROVED			DC1317A-A
		Wednesday, December 10, 2008		SCALE:	REV A
		FILENAME:		SHEET	1 OF 1

1630 McCarthy Blvd.  
Milpitas, CA 95035  
Phone: (408)432-1900  
Fax: (408)434-0507