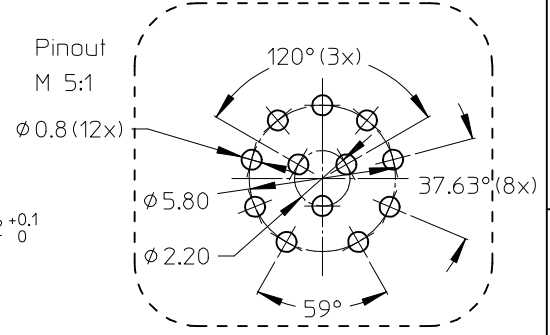
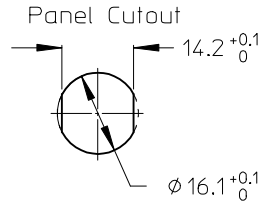
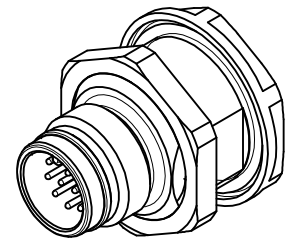
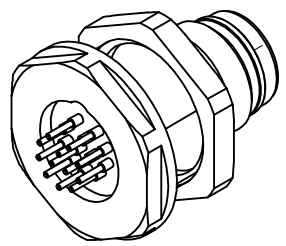


VOLTAGE RATING: 30 VAC / VDC
 AMPERE RATING: 1,5 A
 PROTECTION CLASS: IP 67
 OPERATING TEMPERATURE: -25°C / 90°C
 UL CERTIFICATION: FILE NO. E152210
 CSA CERTIFICATIONS: FILE NO. LR6837



ITEM	COMPONENT	MATERIAL	FINISH
1	O-RING 15.7x1.3	EPDM	BLACK
2	PIN CONTACT 0,6MM	BRASS	CuZn Ni/Au
3	REC. SHELL MALE	BRASS	Ni PLATED
4	INSERT	PA	BLACK
5	LOCKNUT	BRASS	Ni PLATED
6	POTTING MATERIAL	WEVO	NONE

REV	DESCRIPTION
2	ENTER DESCRIPTION

QUALITY SYMBOLS	
	=0
	=0

GENERAL TOLERANCES (UNLESS SPECIFIED)	
	mm INCH
4 PLACES	± --- ± ---
3 PLACES	± --- ± ---
2 PLACES	± 0.05 ± ---
1 PLACE	± 0.30 ± ---
0 PLACE	± 0.50 ± ---
ANGULAR ± .5 °	
DRAFT WHERE APPLICABLE MUST REMAIN WITHIN DIMENSIONS	

DIMENSION STYLE		SCALE	DESIGN UNITS	THIRD ANGLE PROJECTION
MM ONLY		4:1	METRIC	
DRAWN BY	DATE	TITLE		
RSCHIEBER	2012/05/07	REC M12 12P AC MA M16 BM SOL SHLD BRA		
CHECKED BY	DATE	molex		
RSILLER	2012/05/14			
APPROVED BY	DATE	DOCUMENT NO.		
CBURGER	2012/08/14	SD-120084-044		
MATERIAL NO.		SHEET NO.		
1200848041		1 OF 1		
THIS DRAWING CONTAINS INFORMATION THAT IS PROPRIETARY TO MOLEX INCORPORATED AND SHOULD NOT BE USED WITHOUT WRITTEN PERMISSION				