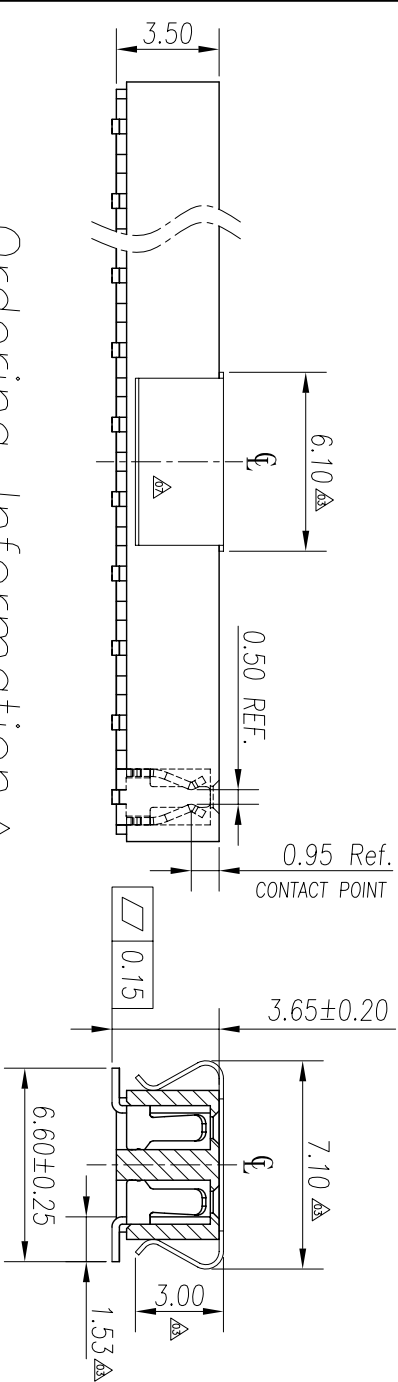
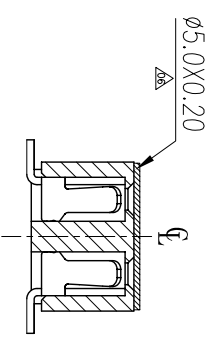
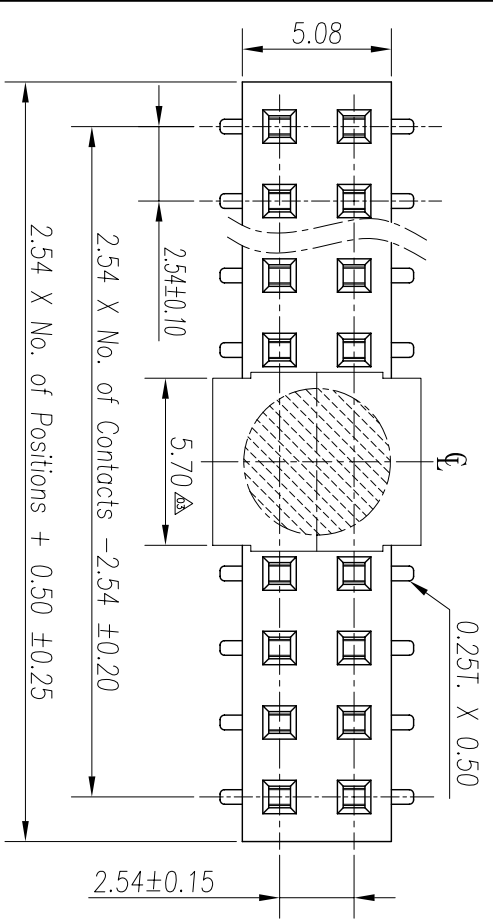
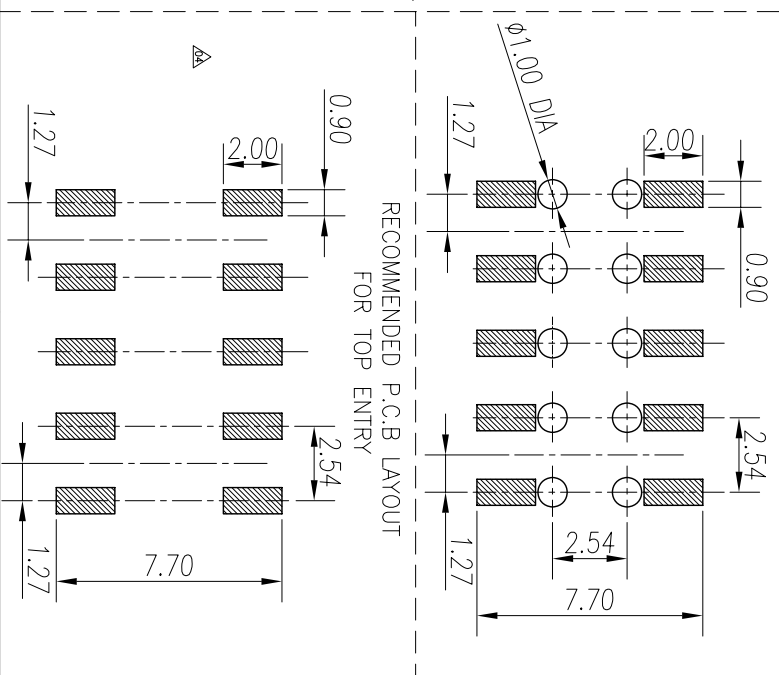


REV.	LOCUS	DESCRIPTION	DATE	DRAWN
08	AA	變更料號	2009.03.27	余曉斌
09	AA	依上級要求變更圖號	2011.10.11	李芳忠

Specifications  
 Current Rating: 3Amp  
 Insulation Resistance: 1000MΩ/Min.  
 Dielectric Withstanding Voltage: 600VAC  
 Contact Resistance: 20mΩMax.  
 Operating Temperature: -40°C to +105°C  
 Materials  
 Contact Material: Phosphor Bronze  
 Insulator Material: High Temperature Thermoplastic, UL 94V-0 Nylon 6T or the equivalent material  
 All materials must meet Greencomm requirement for environment protection.

RECOMMENDED P.C.B LAYOUT  
 FOR BOTTOM ENTRY



### Ordering Information

C SHC211 - XX XX A 001 B 1 A X

No. of Pins per Row: 02~40

Standard Plating:  
 02=Gold Flash  
 Selective Plating  
 01=Tin  
 05=Gold Flash/Tin

Color:  
 1=Black

Standard Packing:  
 C=Tube  
 Selective Packing  
 A=Box  
 E=Cap+Tube  
 F=Cap+Tape&Reel  
 G=Acetate Tape+Tube  
 H=Acetate Tape+Tape&Reel

<b>格菱股份有限公司</b> <b>Greencomm Corporation</b>		GENERAL TOLERANCE X.±5.0° X.±3.0° .XX±2.0° .XXX±1.0°		DESIGN: 李芳忠 CHECKED: 劉北平 AUDITED: 李耀 APPROVED: cc_Ji		DATE: 2011.10.11 DATE: 2011.10.11 DATE: 2011.10.11 DATE: 2011.10.11		DWG. NO.: CSHC211-CA1BA PART NO.: CSHC211-XXXX A001B1AX		TITLE: 2.54 FEMALE HEADER DUAL ROWS SMT TYPE CONNECTOR	
REV. 09	UNIT. mm	SCALE. 4:1	PAGE. 1/1								

