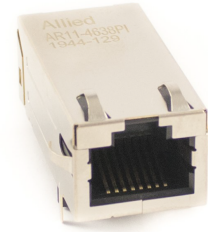




# Single Port PoE+ RJ45 Connector

AR11-4638PI

- 100/1000 Gigabit Base-T for Ethernet, LAN, WAN and other networking applications
- For PoE+ Applications. Compliant with IEEE802.3at
- Balanced DC Current: 720mA Max @ 57VDC Continuous 1.2A Max @ 57VDC for 200 Milliseconds
- Industrial Operating Temp: -40°C to +85°C
- RJ45 Jack cavity conforms to FCC rules and regulations Part 68



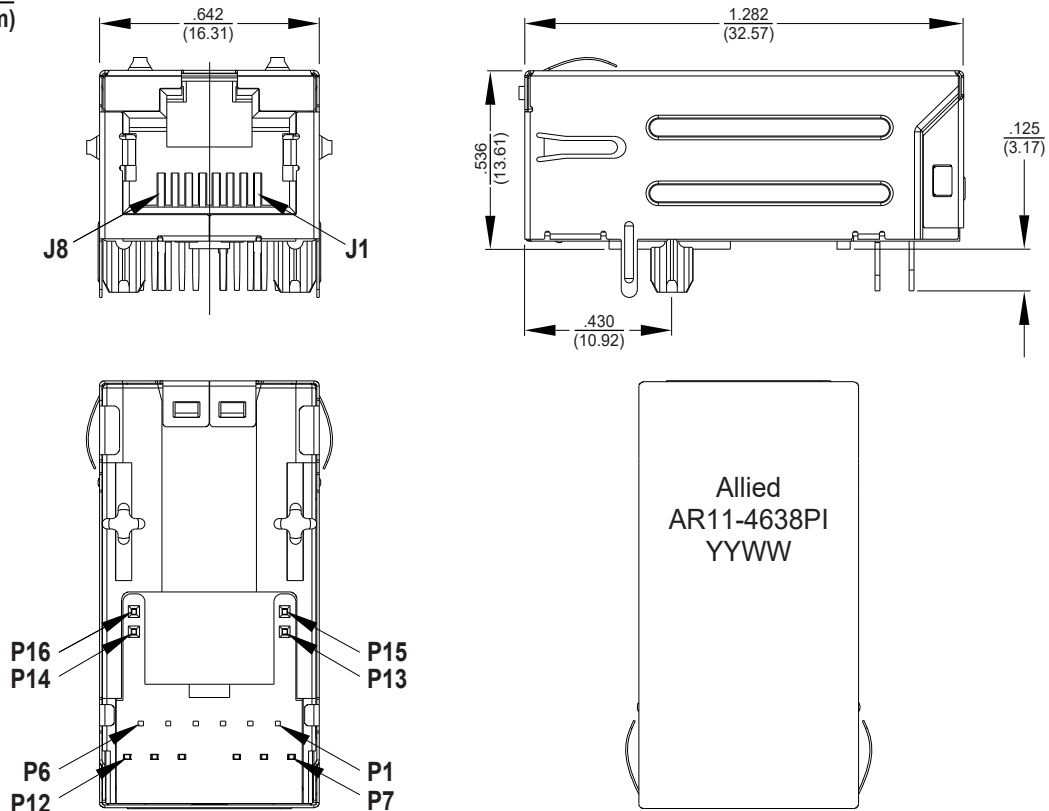
Electrical Specifications @25°C					
OCL(μH Min) @100KHz, 0.1V		Turns Ratio @100KHz (±2%)	DCR (Ω) Max	Insertion Loss (dB Max) 1-100MHz	Isolation (VDC) PHY to Line
With 8mA DC BIAS	With 19mA DC BIAS				
350	120	1:1	1.2	-1.0	2250

Electrical Specifications @25°C					
Return Loss (dB Min)				Crosstalk (dB Min) 1-100MHz	CMR (dB Min) 1-100MHz
1-40MHz	40-60MHz	60-80MHz	80-100MHz		
-16	-12	-10	-8	-27.1	-30

All specifications subject to change without notice.

## MECHANICAL

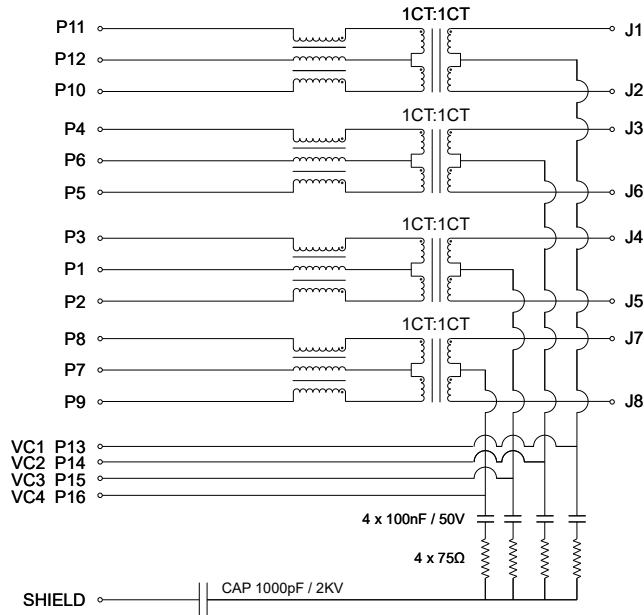
Dimensions:  $\frac{\text{inch}}{\text{(mm)}}$



Unless otherwise specified, all dimension tolerances are ±.010 (.254mm)

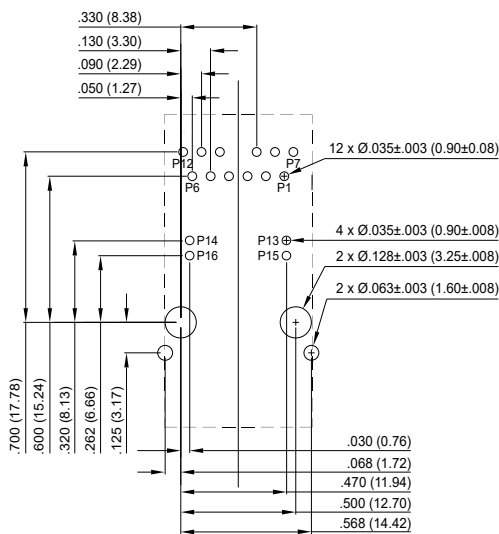


**SCHEMATIC**



**PCB LAYOUT**

Dimensions: inch (mm)



**NOTES**

1. Connector Material:  
Housing: PA66 Black UL94V-0  
Shield: Brass  
Shield Plating: Nickel  
Contact: Phosphor Bronze  
Contact Plating: Selective gold, 30µ" min in contact area
2. Pins not electrically connected may be omitted. See electrical drawing for omitted pins
3. The part is recommended for wave soldering process peak soldering temperature is 260°C Max, 10 Sec Max