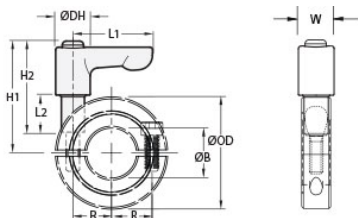




LVO-MSP-24E-AN

Ruland LVO-MSP-24E-AN, 1-1/2" Two-Piece Shaft Collar with Clamping Lever, Anodized Aluminum Collar with Zinc Plated Lever, 60mm OD, 15mm Width



Description

Ruland LVO-MSP-24E-AN is a two-piece quick clamping shaft collar with clamping lever with a 1.5000" bore, 60mm OD, and 15mm width. It is made from MSP-24E-AN and LF45-CL-M6:20-ZS. MSP-24E-AN is an international series shaft collar that has an inch bore, metric hardware, and metric dimensions. The clamp style design does not mar the shaft, is easy to remove, and is indefinitely adjustable. Two-piece shaft collars can be assembled in-lace without the need to remove other components. Ruland mates halves throughout the manufacturing process for proper fit, alignment, and holding power. The threaded stud on the lever is used in place of standard collar hardware. When combined, the two parts create a shaft collar that requires no tools to install, remove, or reposition and is ideally suited for packaging, printing, and other applications where frequent setup changes and adjustments are needed. Once the lever is installed in the shaft collar, users simply turn the lever until they meet their desired torque. The adjustable lever can be reposition by the user without the loss of holding power by lifting the handle and twisting it 40° to lock it in a new position. This allows for use in space constrained environments where 360° rotation is not possible to fully seat the lever. MSP-24E-AN is made from high-strength 2024 aluminum with a black anodized finish. LF45-CL-M6:20-ZS has a zinc plated steel handle and stainless steel threaded stud. This material combination allows for a lightweight durable quick clamping and release component that is suitable for most industrial applications and has higher corrosion resistance properties than types with no anodize. The lever is orange for safety and ease of identification. MSP-24E-AN is manufactured by Ruland and LF45-CL-M6:20-ZS is manufactured by Otto Ganter. LVO-MSP-24E-AN is RoHS3 and REACH compliant.

Product Specifications

Bore (B)	1.5000 in	Bore Tolerance	+0.0020 in / +0.0005 in
Outer Diameter (OD)	60 mm	Center to Lever Top H1	40.8 mm
Width (W)	15 mm	Width Tolerance	+0.076 mm / -0.254 mm
Lever Length L1	45 mm	Lever Height H2	40.5 mm
Hub Diameter DH	13 mm	Sleeve Length L2	20 mm
Recommended Gap	1.59 mm	Recommended Shaft Tolerance	+0.0000 in / -0.0005 in
Thread TH	M6	Hex Wrench Size	5.0 mm
Seating Torque	9.6 Nm	Screw Location (R)	24.99 mm
Number of Screws	2 ea	Collar Part Number	MSP-24E-AN
Lever Part Number	LF45-CL-M6:20-ZS-O	Collar Material	Aluminum
Collar Finish	Black Anodized	Handle Color	Orange
Handle Material	Zinc	Handle Finish	Powder Coated
Insert and Screw Material	303 Stainless Steel	Manufacturer	Ruland Manufacturing
Country of Origin	Shaft Collar - USA Lever - Germany	Weight (lbs)	0.238600
UPC	634529295649	Tariff Code	8483.60.8000
UNSPC	31162811		
Note 1	Performance ratings are for guidance only. The user must determine suitability for a particular application.		
Prop 65	⚠️ WARNING This product can expose you to the chemical Soots, Benzene, Lead, Nickel (metallic), known to the State of California to cause cancer		