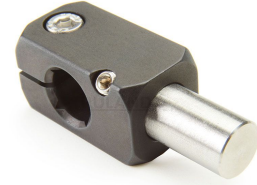
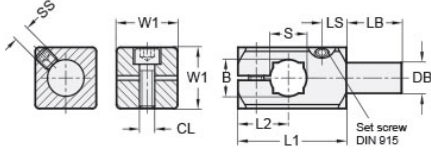




## MT16/16-CC90S-AN


Ruland T-Connector Mini-Clamp With Stud, Thru Hole 16mm, Stud Diameter 16mm, Stud Length 24mm, Black Anodized Aluminum



### Description

Ruland MT16/16-CC90S-AN is a 90 degree connector with stud with a thru hole for 16mm round tube, 16mm stud diameter, 24mm stud length, and 45.0mm body length. It is designed to fit on Ruland tubes and flange bolt bases that begin with MT16. MT16/16-CC90S-AN is aluminum with a black anodized finish and screws are 304 stainless steel for added corrosion resistance when compared to unplated types. This 90 degree connector clamp with stud is commonly used to support tubes for mounting sensors, screens, reflectors, plexiglass machine guards, and other industrial components. The thru hole allows designers flexibility to reposition the clamp or tube as needed. The stud allows for a more compact installation than other connectors which require the use of a second tube that is significantly longer than the stud. MT15:16:20-ALK-M6-25 adjustable clamping lever can be used in place of standard clamp hardware for rapid repositioning of the tube or connector without the need for tools. MT16/16-CC90S-AN is manufactured by Otto Ganter, inventoried by Ruland, and RoHS3 compliant.

### Product Specifications

|                               |   |                            |                       |
|-------------------------------|---|----------------------------|-----------------------|
| <b>Thru Hole Diameter B</b>   | 16 mm   | <b>Thru Hole Tolerance</b> | +0.11/-0 mm           |
| <b>Bolt Length LB</b>         | 24 mm   | <b>Bolt Diameter DB</b>    | 16 mm                 |
| <b>Body Length L1</b>         | 45 mm   | <b>Edge To Center L2</b>   | 20 mm                 |
| <b>Screw To Edge LS</b>       | 11 mm   | <b>Hole Depth T</b>        | 16 mm                 |
| <b>Width &amp; Height W1</b>  | 25 mm   | <b>Clamp Screw CL</b>      | M6                    |
| <b>Set Screw SS</b>           | M6  | <b>Weight (lbs)</b>        | 0.264600              |
| <b>Material Specification</b> | Anodized Aluminum   | <b>Manufacturer</b>        | JW Winco/ Otto Ganter |
| <b>UPC</b>                    | 634529231944  | <b>Country of Origin</b>   | Germany               |
| <b>Tariff Code</b>            | 7609.00.0000  | <b>UNSPC</b>               | 31162908              |
| <b>Note 1</b>                 | Performance ratings are for guidance only. The user must determine suitability for a particular application.  |                            |                       |
| <b>Prop 65</b>                |  <b>WARNING</b> This product can expose you to the chemical Nickel (metallic), known to the State of California to cause cancer. For more information go to <a href="http://www.P65Warnings.ca.gov">www.P65Warnings.ca.gov</a> . |                            |                       |