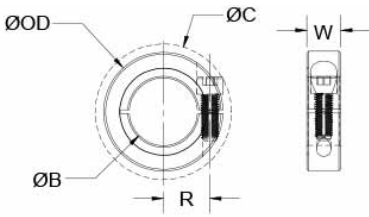




## ENCL20-5MM-A

Ruland ENCL20-5MM-A, 5mm Thin Line Shaft Collar, Aluminum, One-Piece Clamp Style, 20mm OD, 5.5mm Width




### Description

Ruland ENCL20-5MM-A is a one-piece thin line shaft collar with a 5mm bore, 20mm OD, and 5.5mm width. The narrow profile reduces weight and allows for use in confined spaces. It has the clamp style benefits of not marring the shaft, easy removability, and indefinite adjustability while commonly being used for guiding, spacing, stopping, mounting, and component alignment. Equipment manufacturers benefit from the tightly controlled face to bore perpendicularity (TIR of ? .05mm). Perpendicularity is critical for alignment when the shaft collar is used as a load bearing face, mechanical stop, or for mounting components such as gears or bearings. Proprietary processes have been developed by Ruland to maintain superior fit, finish, and holding power. ENCL20-5MM-A is stamped with the Ruland name for ease of identification. Forged screws test beyond DIN 912 12.9 standards to ensure maximum holding power. ENCL20-5MM-A is manufactured from solid bar stock sourced from select North American mills and machined to a fine burr free finish. Ruland uses high grade 2024 aluminum for increased screw seating torque. ENCL20-5MM-A is RoHS3 and REACH compliant and manufactured in our Marlborough, MA factory under strict controls using proprietary processes.

### Product Specifications

<b>Bore (B)</b>	5 mm	<b>Bore Tolerance</b>	+0.050 mm / +0.012 mm
<b>Outer Diameter (OD)</b>	20 mm	<b>Clearance Diameter (C) MAX</b>	21.50 mm
<b>Width (W)</b>	5.5 mm	<b>Width Tolerance</b>	+0.076 mm / -0.254 mm
<b>Recommended Shaft Tolerance</b>	+0.000 mm / -0.013 mm	<b>Forged Clamp Screw</b>	M2 x 6
<b>Screw Material</b>	Alloy Steel	<b>Hex Wrench Size</b>	1.5 mm
<b>Screw Finish</b>	Black Oxide	<b>Seating Torque</b>	0.6 Nm
<b>Screw Location (R)</b>	7.75 mm	<b>Number of Screws</b>	1 ea
<b>Material Specification</b>	2024-T351 Aluminum Bar	<b>Finish Specification</b>	Bright, No Plating
<b>Manufacturer</b>	Ruland Manufacturing	<b>Country of Origin</b>	USA
<b>Temperature</b>	-40°F to 225°F (-40°C to 107°C)	<b>Weight (lbs)</b>	0.009500
<b>UPC</b>	634529137765	<b>Tariff Code</b>	8483.60.8000
<b>UNSPC</b>	31162811		

**Note 1** Performance ratings are for guidance only. The user must determine suitability for a particular application.

**Prop 65**  **WARNING** This product can expose you to the chemical Ethylene Thiourea, known to the State of California to cause cancer and birth defects or other reproductive harm. For more information go to [www.P65Warnings.ca.gov](http://www.P65Warnings.ca.gov).

### Installation Instructions

1. Use the ENCL20-5MM-A thin line shaft collar as it is received.
2. Wipe the bore clean.
3. Apply a thin coat of light oil to the shaft.
4. Place the collar onto the desired shaft location and tighten it using a 1.5 mm hex wrench until a slight resistance is felt.
5. Wring collar into its final position and tighten the screw to the full recommended seating torque of 0.6 Nm using a 1.5 mm torque wrench.