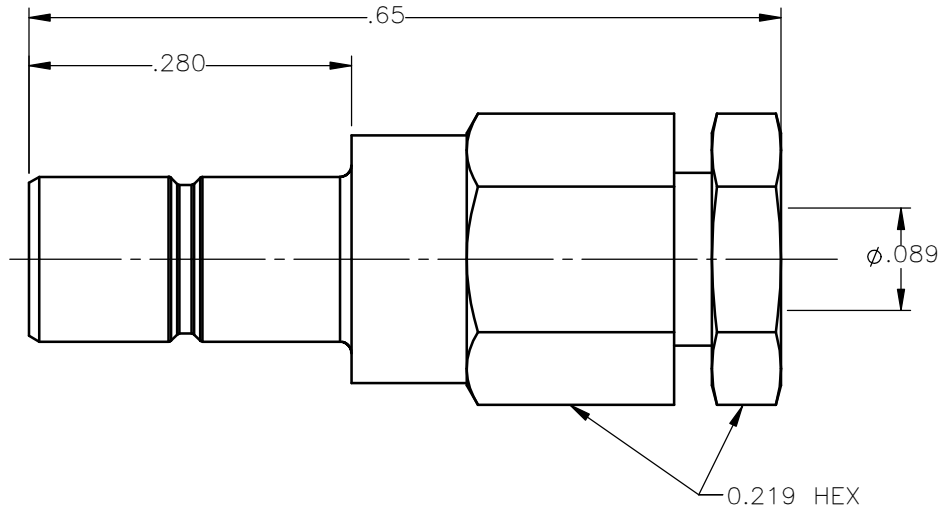


REVISIONS			
REV.	DESCRIPTION	DATE	APPROVED
A	INITIAL RELEASE	12/18/17	J.S.





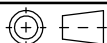
NOTES:

MATERIALS:

1. INSULATORS = VIRGIN WHITE TEFLON PER ASTM D1710, GRADE 1, TYPE I, CLASS "B".
2. ALL METAL PARTS = BRASS PER ASTM B16, ALLOY C36000, TEMPER H02.

FINISHES:

1. CONTACT = GOLD PLATE PER ASTM B488-01, TYPE II, 50µin MIN, GRADE C, OVER 100 TO 200µin STRESS FREE SULFAMATE NICKEL PER QQ-N-290.
2. ALL OTHER METAL PARTS = NICKEL PLATE PER AMS-QQ-N-290, CLASS 1, GRADE G, EXCEPT 100 TO 200µin THICK OVER 50 TO 100µin THICK COPPER PER AMS 2418.

UNLESS OTHERWISE SPECIFIED DIMENSIONS ARE IN INCHES TOLERANCES ON	DWN:	DATE	 <b>Property of Radiall</b> This document cannot be reproduced or communicated to a third party without prior written permission of RADIALL.	
	J.S.	12/18/17		
DECIMAL	ANGLE	CHKD:	DATE	<b>SMB STRAIGHT MALE JACK          CLAMP TYPE          FOR RG-178 &amp; SIMILAR CABLES</b>
		M.B.	12/18/17	
		APVD:	DATE	
REFERENCE:		J.M.	12/18/17	SIZE: A    FSCM NO.: 19505    DWG NO.: 2001-7551-002    REV: A
ORIGINATED: J.S. DATE: 12/18/17		MATERIALS & FINISHES: SEE NOTES	SCALE: 6:1	THIRD ANGLE PROJECTION  SHEET 1 OF 1

2001-7551-002