

1011-027-0805 ✓ ACTIVE

DEUTSCH | DEUTSCH DT

TE Internal #: 1011-027-0805

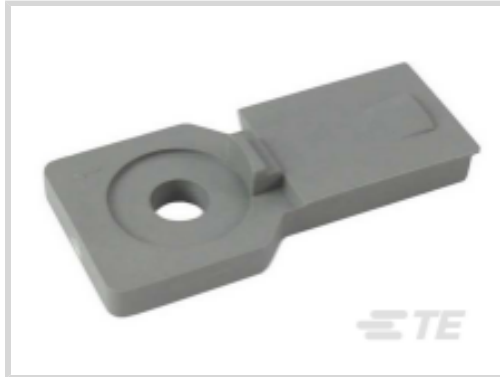
Other Automotive Connector Accessories, Mounting Clip, PA GF,  
Gray, -55 – 125 °C [-67 – 257 °F], DEUTSCH DT

[View on TE.com >](#)



Connectors > Automotive Connectors > Automotive Connector Accessories > Other Automotive Connector Accessories >

DEUTSCH DT Mounting Clips



Automotive Connector Accessory Type: **Mounting Clip**

Primary Product Material: **PA GF**

Primary Product Color: **Gray**

Operating Temperature Range: **-55 – 125 °C [-67 – 257 °F]**

[All DEUTSCH DT Mounting Clips \(10\)](#)

## Features

### Product Type Features

Automotive Connector Accessory Type	Mounting Clip
-------------------------------------	---------------

### Body Features

Primary Product Material	PA GF
Primary Product Color	Gray

### Usage Conditions

Compatible With Connector Style	Receptacle
Operating Temperature Range	-55 – 125 °C[-67 – 257 °F]

### Packaging Features

Packaging Quantity	3000
Packaging Method	Box

### Other

Serviceable	Yes
-------------	-----

## Product Compliance

[For compliance documentation, visit the product page on TE.com>](#)

EU RoHS Directive 2011/65/EU	Compliant
------------------------------	-----------



EU ELV Directive 2000/53/EC	Compliant
China RoHS 2 Directive MIIT Order No 32, 2016	No Restricted Materials Above Threshold
EU REACH Regulation (EC) No. 1907/2006	Current ECHA Candidate List: JAN 2023 (233) Candidate List Declared Against: JAN 2023 (233) Does not contain REACH SVHC
Halogen Content	Not Low Halogen - contains Br or Cl > 900 ppm.
Solder Process Capability	Not reviewed for solder process capability

Product Compliance Disclaimer

This information is provided based on reasonable inquiry of our suppliers and represents our current actual knowledge based on the information they provided. This information is subject to change. The part numbers that TE has identified as EU RoHS compliant have a maximum concentration of 0.1% by weight in homogenous materials for lead, hexavalent chromium, mercury, PBB, PBDE, DBP, BBP, DEHP, DIBP, and 0.01% for cadmium, or qualify for an exemption to these limits as defined in the Annexes of Directive 2011/65/EU (RoHS2). Finished electrical and electronic equipment products will be CE marked as required by Directive 2011/65/EU. Components may not be CE marked. Additionally, the part numbers that TE has identified as EU ELV compliant have a maximum concentration of 0.1% by weight in homogenous materials for lead, hexavalent chromium, and mercury, and 0.01% for cadmium, or qualify for an exemption to these limits as defined in the Annexes of Directive 2000/53/EC (ELV). Regarding the REACH Regulation, the information TE provides on SVHC in articles for this part number is based on the latest European Chemicals Agency (ECHA) 'Guidance on requirements for substances in articles' posted at this URL: <https://echa.europa.eu/guidance-documents/guidance-on-reach>

## Compatible Parts

TE Part # CAT-J41-DDRC  
DEUTSCH DT Receptacle Connectors

TE Part # CAT-D487-CH8172  
DEUTSCH DT Series Housings & Connectors

TE Part # 2375997-2  
DT04-08PB-P093, REC, 8P BLK, BUSBAR G, 4X2, B

## Also in the Series | DEUTSCH DT

Automotive Connector Caps & Covers (107)

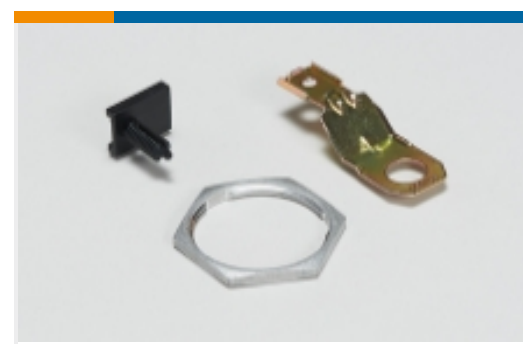
Automotive Connector Locks & Position Assurance(74)

Automotive Housings(618)

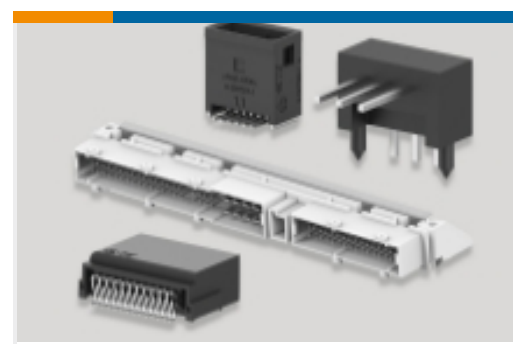
Automotive Seals & Cavity Plugs(5)



Insertion &amp; Extraction Tools(3)

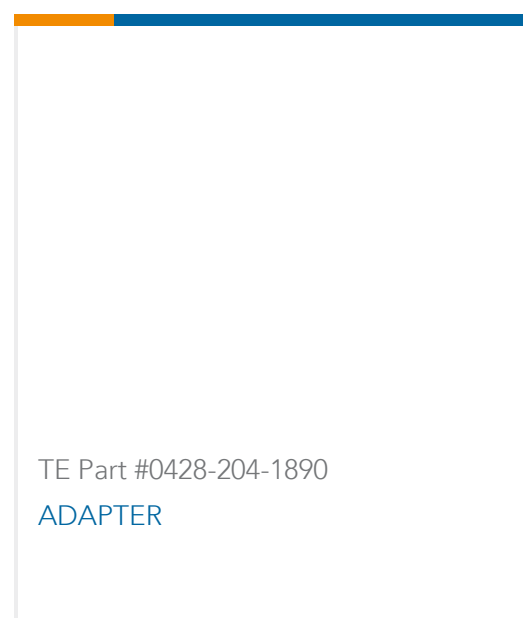
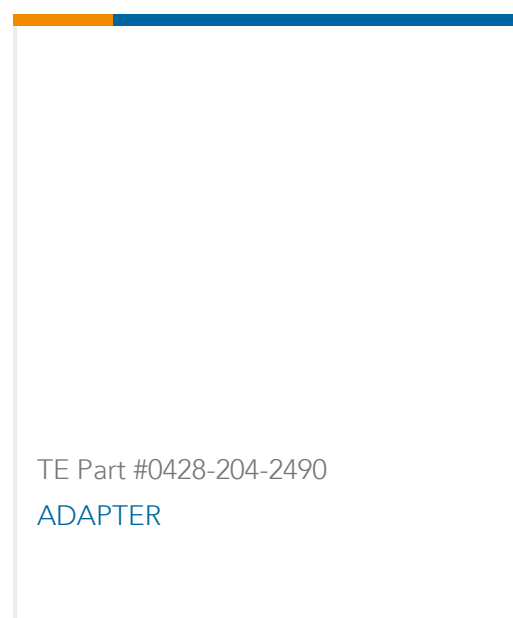
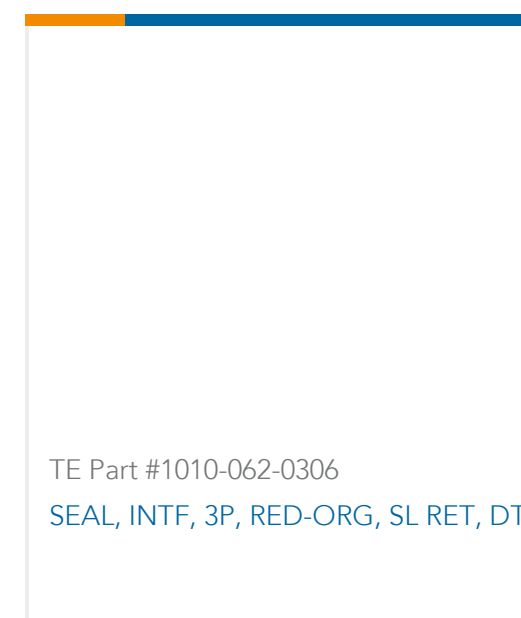


Other Automotive Connector Accessories(16)



PCB Headers &amp; Receptacles(102)

## Customers Also Bought

TE Part #HD34-18-6PN-C030  
DEUTSCH HD30 HousingsTE Part #0409-201-1800  
DEUTSCH HD30 BackshellsTE Part #DT04-08PB-P026  
REC, 8P, BLK, BUSBAR 2X4, NICKEL, BTE Part #0462-203-04141  
SOC, SOLID, SIZE 4, 6AWG, NITE Part #K1162614  
Leuchtmelder TS-201-WS12 912TE Part #0428-204-1890  
ADAPTERTE Part #0428-204-2490  
ADAPTERTE Part #1010-062-0306  
SEAL, INTF, 3P, RED-ORG, SL RET, DT

## Documents

### Product Drawings

CLIP, PA66, GRY, 5.08MM HOLE, ST, DT8PIN

English

### CAD Files

3D PDF

3D

Customer View Model

[ENG\\_CVM\\_CVM\\_1011-027-0805\\_99\\_c-1011-027-0805-99.2d\\_dxf.zip](#)

English

Customer View Model

[ENG\\_CVM\\_CVM\\_1011-027-0805\\_99\\_c-1011-027-0805-99.3d\\_igs.zip](#)

English

Customer View Model

[ENG\\_CVM\\_CVM\\_1011-027-0805\\_99\\_c-1011-027-0805-99.3d\\_stp.zip](#)

English

By downloading the CAD file I accept and agree to the [Terms and Conditions](#) of use.



---

**Datasheets & Catalog Pages**

**CONNECTOR SELECTOR**

English

---

**Product Specifications**

**Application Specification**

English

---

**Instruction Sheets**

**Instruction Sheet (U.S.)**

English