

Han 16M HBM-Rear Fit-SL

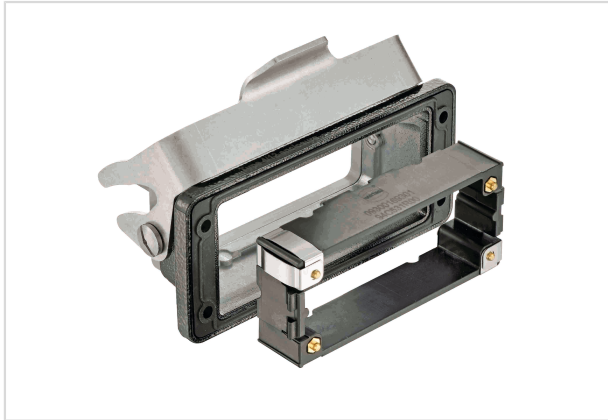


Image is for illustration purposes only. Please refer to product description.

Part number	09 37 016 0397
Specification	Han 16M HBM-Rear Fit-SL
HARTING eCatalogue	https://b2b.harting.com/09370160397

Identification

Category	Hoods/Housings
Series of hoods/housings	Han [®] M
Type of hood/housing	Bulkhead mounted housing
Description of hood/housing	Rear mounting
Type	Low construction

Version

Size	16 B
Locking type	Single locking lever
Field of application	Hoods/housings for rough environments
Pack contents	Mounting frame is included within the delivery

Technical characteristics

Limiting temperature	-40 ... +125 °C
Degree of protection acc. to IEC 60529	IP66
Type rating acc. to UL 50 / UL 50E	4 4X 12

Material properties

Material (hood/housing)	Aluminium die-cast
Surface (hood/housing)	Powder-coated
Colour (hood/housing)	RAL 9005 (jet black)
Material (seal)	FPM



Pushing Performance

Material properties

Material (locking)	Stainless steel
--------------------	-----------------

Specifications and approvals

Approvals	DNV GL
UL / CSA	UL 1977 ECBT2.E235076 CSA-C22.2 No. 182.3 ECBT8.E235076
CE	Yes

Commercial data

Packaging size	1
Net weight	166 g
Country of origin	China
European customs tariff number	85389099
eCl@ss	27440202 Shell for industrial connectors