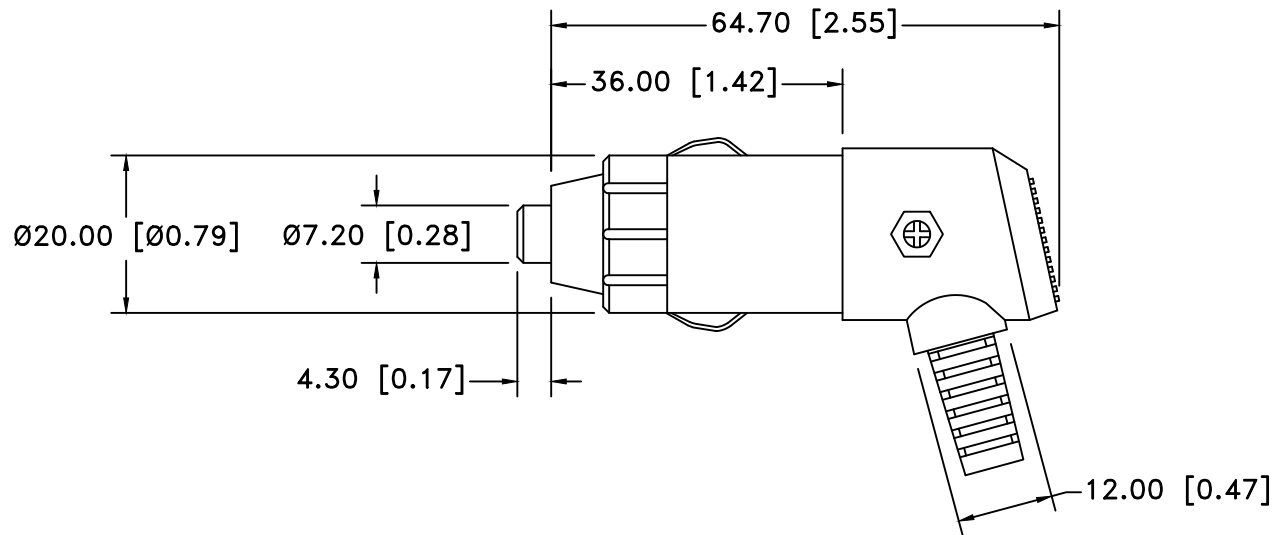



Date	SYM	REVISION RECORD	AUTH	DR.	CK.
09/21/12	A	UPDATED FUSE SPEC.	T.B.	B.S.	
11/07/14	B	UPDATED TO ROHS 2 COMPLIANT	T.B.	B.S.	
02/28/20	C	DIM. 64.70 WAS 68.84 DIM. 7.20 WAS 7.30 ADDED DIM. 12.00 AND 36.00 UPDATED NOTES	T.B.	B.S.	



NOTE:

CASING: ABS 757
 CAP: ABS 757
 TERMINALS: STEEL, NICKEL PLATED
 TIP: STEEL, NICKEL PLATED
 FUSE: 3 AMP., 250V, GLASS TUBE, 6mm X 30mm
 ROHS COMPLIANT

Tolerance (Except as noted)	 Memory Protection Devices, Inc 200 Broad Hollow Road, Farmingdale, New York 11735		
decimal ±.5 (.020)		Scale	Drawn By B.S.
Fractional ± .8 (.030)	Title	Approved By T.B.	
Angular ± 3°	Date	Drawing Number	
	02/28/20	AP131	
		AUTO PLUG FOR 21mm JACKS	