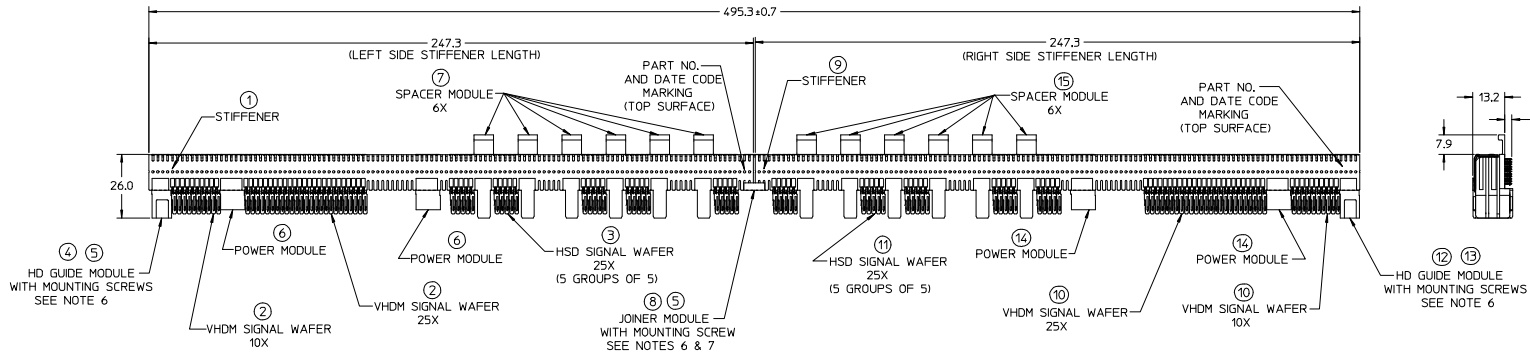


CUSTOMER: EMC  
(SYMM 7-700)



NOTES: (UNLESS OTHERWISE SPECIFIED)

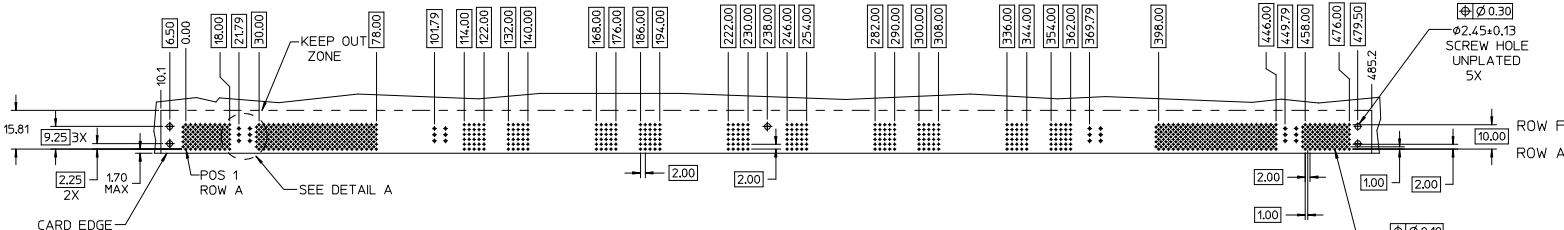
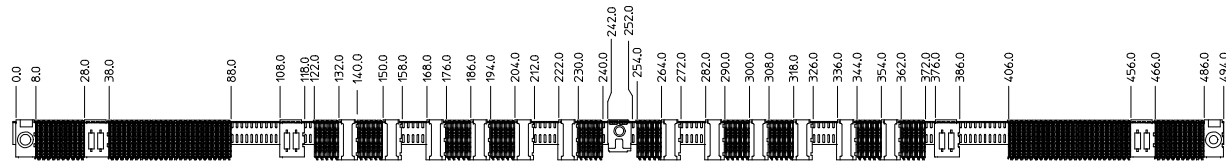
- MATERIALS: HOUSING - LIQUID CRYSTAL POLYMER (LCP)  
GLASS-FILLED, UL94V-0, BLACK  
TERMINALS - HIGH PERFORMANCE COPPER ALLOY  
STIFFENER - STAINLESS STEEL
- FINISH: SELECTIVE GOLD (Au) IN CONTACT AREA, 0.76 MICROMETERS MINIMUM THICKNESS, SELECTIVE MATTE TIN (Sn) ON POB TAILS, NICKEL (Ni) UNDERPLATE OVERALL.
- REFER TO MOLEX PRODUCT SPECIFICATION PS-74031-999 FOR PERFORMANCE SPECIFICATIONS.
- REFER TO MOLEX DOCUMENT SD-74031-002 FOR ADDITIONAL DETAIL ON THE VHDM 6 ROW SIGNAL WAFER.
- REFER TO MOLEX DOCUMENT SD-74881-002 FOR ADDITIONAL DETAIL ON THE HSD 6 ROW SIGNAL WAFER.
- MOUNTING SCREWS WILL BE BAGGED WITH EACH CONNECTOR.
- JOINER MODULE SHIPPED LOOSE, WITH LEFT SIDE CONNECTOR. END USER TO INSERT ON STIFFENER AFTER INSTALLATION OF BOTH SUB-ASSEMBLIES ON DAUGHTERCARD.
- REFER TO MOLEX DOCUMENT SD-74039-023 FOR ADDITIONAL DETAIL ON THE JOINER MODULE.
- REFER TO MOLEX DOCUMENT SD-74026-010 FOR ADDITIONAL DETAIL ON THE POWER MODULE.
- THIS PART CONFORMS TO MOLEX COSMETIC SPECIFICATION PS-45499-002 CLASS B.
- PARTS TO BE PACKAGED IN TRAYS PER PK-70873-546.

LEFT SIDE OF TWO PIECE CONNECTOR

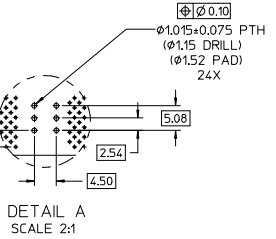
ITEM	PART NUMBER	DESCRIPTION	QTY
1	74036-0247	STIFFENER	1
2	74031-1001	VHDM SIGNAL WAFER, LF	35
3	74881-1001	HSD SIGNAL WAFER, LF	25
4	74039-2008	MTL GUIDE - BLACK - LG DIA	1
5	73774-0010	*2-56 X 0.188 MNTG SCREW	3
6	75885-2010	POWER MODULE FOR EMC, LF	2
7	74887-0006	OUTRIGGER SPACER MODULE	6
8	74039-6111	JOINER - SM DIA	1

RIGHT SIDE OF TWO PIECE CONNECTOR

ITEM	PART NUMBER	DESCRIPTION	QTY
9	74036-0247	STIFFENER	1
10	74031-1001	VHDM SIGNAL WAFER, LF	35
11	74881-1001	HSD SIGNAL WAFER, LF	25
12	74039-2108	MTL GUIDE - BLUE - SM DIA	1
13	73774-0010	*2-56 X 0.188 MNTG SCREW	2
14	75885-2010	POWER MODULE FOR EMC, LF	2
15	74887-0006	OUTRIGGER SPACER MODULE	6



LEAD-FREE  
PLATING



DAUGHTERCARD HOLE PATTERN  
(CONNECTOR SIDE)

<b>CHG TO LEAD-FREE</b> EC NO: UCP2012-2063 DRAWING: 2012/03/08 CHKD: MOLEF 2012/21/06 APPR: SMILLER 2012/08/10	QUALITY SYMBOLS ∇=0 ∇=0 ∇=0	GENERAL TOLERANCES (UNLESS SPECIFIED): <table border="1"> <tr><th></th><th>mm</th><th>INCH</th></tr> <tr><td>4 PLACES</td><td>±---</td><td>±---</td></tr> <tr><td>3 PLACES</td><td>±---</td><td>±---</td></tr> <tr><td>2 PLACES</td><td>±0.25</td><td>±---</td></tr> <tr><td>1 PLACE</td><td>±0.38</td><td>±---</td></tr> <tr><td>0 PLACE</td><td>±---</td><td>±---</td></tr> </table>		mm	INCH	4 PLACES	±---	±---	3 PLACES	±---	±---	2 PLACES	±0.25	±---	1 PLACE	±0.38	±---	0 PLACE	±---	±---	DIMENSION STYLE <b>MM ONLY</b>	SCALE <b>1:1</b>	DESIGN UNITS <b>METRIC</b>	THIRD ANGLE PROJECTION
		mm	INCH																					
	4 PLACES	±---	±---																					
	3 PLACES	±---	±---																					
2 PLACES	±0.25	±---																						
1 PLACE	±0.38	±---																						
0 PLACE	±---	±---																						
MATERIAL NO. <b>74886-0021</b>	DOCUMENT NO. <b>SD-74886-021</b>	<b>6 ROW HSD HYBRID, LF DAUGHTERCARD SALES DRAWING</b>																						
DRAFT WHERE APPLICABLE MUST REMAIN WITHIN DIMENSIONS				SHEET NO. <b>1 OF 1</b>																				
THIS DRAWING CONTAINS INFORMATION THAT IS PROPRIETARY TO MOLEX INCORPORATED AND SHOULD NOT BE USED WITHOUT WRITTEN PERMISSION																								