

# FAA-PMA

B-430-1

REV.	DESCRIPTION	DATE	APPROVED
6	33597 FIND NOS 10, 11 & 12 ADDED	97/08/27	RS
H	35453 NOTE 5 ADDED	98/05/04	RS
J	39517 *BOEING* ADDED TO VIB SPEC, SHOCK & CONNECTOR P/N, .87 MIN ADDED	99/05/11	RS

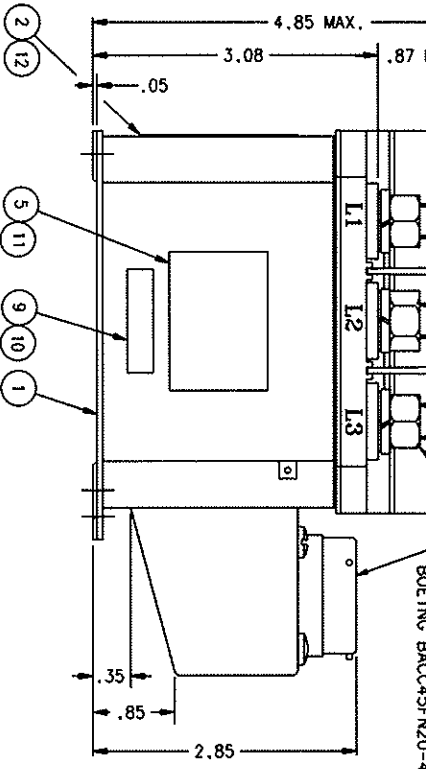
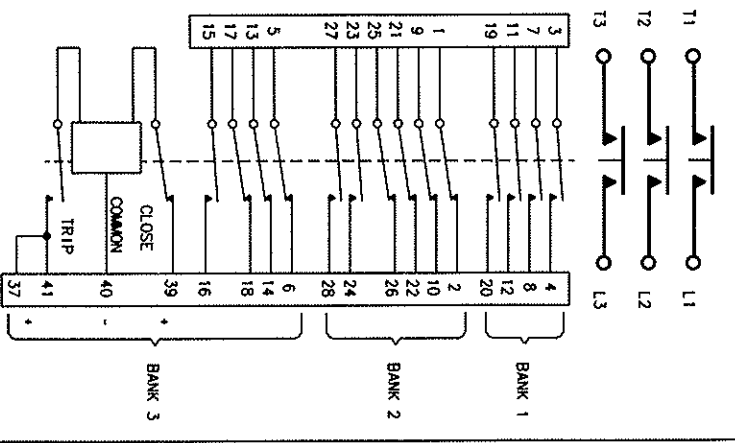
CONSTRUCTION  
GASKET SEALED (VENTED)

MAIN CONTACT CONFIGURATION  
VOLTAGE RES.  
CURRENT RES.  
SUB TRANSIENT SHORT CIRCUIT INTERRUPT  
AUXILIARY CONTACTS CONFIGURATION  
VOLTAGE CURRENT

COIL DATA  
DUTY CYCLE  
OPERATING VOLTAGE  
CLOSE  
TRIP  
CURRENT CLOSING TRIP

ENVIRONMENTAL DATA  
OPERATING TEMPERATURE VIBRATION  
ACCELERATION  
SHOCK  
ALTITUDE  
OPERATE TIME  
TRIP  
LIFE ELECTRICAL  
LIFE MECHANICAL (WEIGHT (MAX.))

CONTINUOUS (SELF - DEENERGIZING)  
VOLTS AT 85°C  
VOLTS  
VOLTS  
VOLTS  
AMPS MAX  
AMPS MAX



- NOTES:
- THIS UNIT MEETS THE MATERIAL AND WORKMANSHIP REQUIREMENTS OF MIL-R-6106.
  - INSTALLING SURFACE SHALL PROVIDE ELECTRICAL GROUND.
  - TERMINAL COVER ITEM NO. 4 REMOVED FROM TOP VIEW.
  - EFFECTIVE WITH S/N CD30086 FOUR COVER SCREWS WILL BE COUNTERSUNK BELOW THE BASE LEVEL.
  - FAA/PMA PLATE (AND OVERLAY) NOT REQUIRED ON UNITS SUPPLIED TO ORIGINAL EQUIPMENT MANUFACTURERS.

NO.	QTY	RECD	PART OR IDENTIFYING NO.	DESCRIPTION	NONCATALOGUE OR DESCRIPTION	FSOM NO.	DRAWING OR SPECIFICATION	MATERIAL OR NOTE
12	1		39529-008	OVERLAY, WIRING DIAGRAM				
11	1		39529-002	OVERLAY, NAME PLATE				
10	1		39529-024	OVERLAY, FAA LABEL				
9	1		58400-030	PLATE - FAA/PMA				
8	6		51807-230	WASHER LOCK, .375 X .687 X .094 SPLIT			MS35338-141	S. STEEL
7	6		51704-010	WASHER, .390 X .625 X .032 FLAT			AN980616L	S. STEEL
6	6		50407-370	NUT 3/8-24 X .562 X .328 HEX.			MS51972-3	S. STEEL
5	1		40167-001	PLATE - NAME				
4	2		36006-010	COVER - TERMINAL ASSEMBLY				
3								
2	1		35936-001	PLATE - WIRING DIAGRAM				
1	1		35894-020	CONNECTOR ASSEMBLY - PRIMARY				

REF. CMMI  
BOEING S2811004-1  
UNLESS OTHERWISE SPECIFIED DIMENSIONS ARE IN INCHES  
DIMENSIONS ON  
RELEASE  
CONTR. NO.  
GOVT. APPROV.

HARTMAN ELECTRICAL MANUFACTURING  
MANF'LD, OHIO  
CONTACTOR - 3PST MAGN. LATCH  
275 AMP 115/200V, 400 HZ.  
SIZE CODE IDENT DWG NO.  
C 74063 B-430-1  
SCALE NONE SHEET