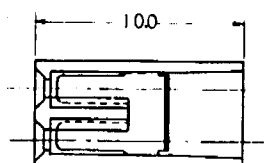
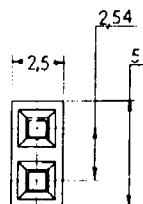
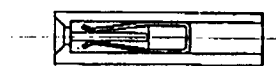
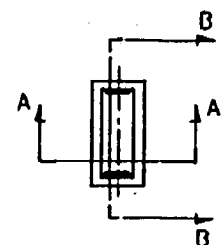


PRODUCT NO	FINISH ぬ.こ SEE NOTE 注4参照
66971-102	PLATING A ぬ.こ A
66971-202	PLATING B ぬ.こ B

REVISIONS			
REV	DESCRIPTION	BY	DATE
0	REVISED	TR	1/2/80
A	REVISED	TR	1/2/80



SECTION B-B



SECTION A-A

NOTE:

- CONTACT WITHDRAWAL FORCE TO BE 30GR. MIN. WHEN MATED WITH Q.61 SQ. STEEL GAGE PIN.
- MATING HEADER: 0.64±0.03 SQ. OR ROUND PIN
- HOUSING MATL: 15% GLASS FIBER FILLED PBT RESIN RATED PER UL 94V0 COLOR: BLUE
- CONTACT MATL: 0.2 THK. PHOSPHOR BRONZE PLATING A; CONTACT AREA 0.5 μ m MIN GOLD OVER 1.3 μ m NICKEL. PLATING B; CONTACT AREA 0.5 μ m MIN GOLD OVER 1.3 μ m NICKEL OTHER GOLD FLASH OVER 1.3 μ m NICKEL.

注:

- コンタクト引抜き力は最小30gr (Q.61角スチールゲージピン使用)
- 適合する相手ヘッダーは0.64±0.03角又は丸ピン
- ハウジング材料: 15%ガラス繊維入りPBT樹脂 規格はUL 94-V0, 色調-青
- コンタクト材料: 0.2ミクロン厚リン青銅。ぬ.こ A; コンタクト接点部分は1.3 μ mニッケルぬ.こに最小0.5 μ mの金ぬ.こ。他の部分に1.3 μ mニッケルぬ.こ。ぬ.こ B; コンタクト接点部分は1.3 μ mニッケルぬ.こに最小0.5 μ mの金ぬ.こ。他の部分に1.3 μ mニッケルぬ.こに全フッ素。

THIS INFORMATION IS CONFIDENTIAL AND IS DISCLOSED TO YOU ON CONDITION THAT NO FURTHER DISCLOSURE IS MADE BY YOU TO OTHER THAN BERG PERSONNEL WITHOUT WRITTEN AUTHORIZATION FROM BERG ELECTRONICS. DO NOT SCALE PRINT

CUSTOMER COPY FOR REFERENCE ONLY

DO NOT SCALE DRAWING		TOLERANCES UNLESS OTHERWISE NOTED	INCH	MM	DR	MATL	DATE
		LINEAR	0.01	0.00±0.2	TR	SEE NOTE	1/2/80
		RADII	0.001	0.00±0.1	CKD		1/2/77
		ANGLES			ENGR		1/2/80
THIRD ANGLE PROJECTION					APPD		
NEXT ASSY	USED ON						
APPLICATION							

BERG
ELECTRONICS

TITLE			
10MM H 2POS. JUMPER CONNECTOR			
SCALE	SIZE	DWG. NO.	
5-1	B	66971	SHEET 1 OF 1

NOTE: This print is the property of and embodies proprietary designs of Berg Electronics. No part of this design or information on this print may be used in any way without the written consent of Berg Electronics.