

PT

Pitot Tubes (Plastic)

ACI carries a full line of differential, static, and velocity (flow) pitot tubes. The PT Series is designed to sense air flow velocity in VAV and other small ducts found in many of today's HVAC Systems. When selecting the proper PT series Pitot Tube, you want to make sure that the insertion length of the pitot tube is long enough to reach the midpoint of the duct and at least 10 straight duct diameters upstream and downstream for best results. Note that the Pitot Tube should also be mounted such that the arrow on the pitot tube is facing in the direction of the air flow. And that the tube is kept free of dirt and debris. A foam pad is adhered to mounting plate to seal the installation opening and to reduce vibrations.

Applications: Used to monitor fan operation and true air flow with varying amounts of static pressure in non-critical applications.

The PT Series is covered by ACI's Two (2) Year Limited Warranty. The warranty can be found in the front of ACI's Sensors & Transmitters catalog, as well as on ACI's website, www.workaci.com.

PRODUCT SPECIFICATIONS

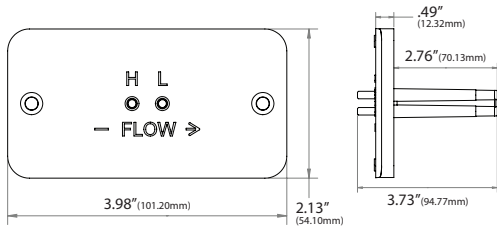
Tubing Connections:	3/16" OD (4.8 mm) connection for 1/4" (6.4 mm) OD Poly Tubing
Sensing (Insertion) Length # Sensing Points:	See ordering grid below
Recommended Duct Size:	4" (10.2 cm) to 18" (45.7 cm)
Recommended Air Flow:	200 FPM (60.96 MPM) minimum to 3000 FPM (914.4 MPM) maximum
Operating Temperature Range:	40 to 120°F (4 to 49°C)
Storage Temperature Range:	-40 to 185°F (-40 to 85°C)
Operating Humidity Range:	0 to 90% RH non-condensing
Material Type:	ABS
Material Flammability Rating	UL-94 HB
Product Dimensions (W x H x L) Weight:	PT 3": 4.00" (10.2 cm) x 2.1" (5.3 cm) x 3.6" (9.1 cm) / 0.06 lbs (0.03 kg) PT 5.2": 4.00" (10.2 cm) x 2.1" (5.3 cm) x 6.0" (15.2 cm) / 0.07 lbs (0.032 kg) PT 7.5": 4.00" (10.2 cm) x 2.1" (5.3 cm) x 8.3" (21.1 cm) / 0.075 lbs (0.034 kg) PT 9.7": 4.00" (10.2 cm) x 2.1" (5.3 cm) x 10.6" (26.9 cm) / 0.086 lbs (0.04 kg)
Approvals:	RoHS2, WEEE, Reach



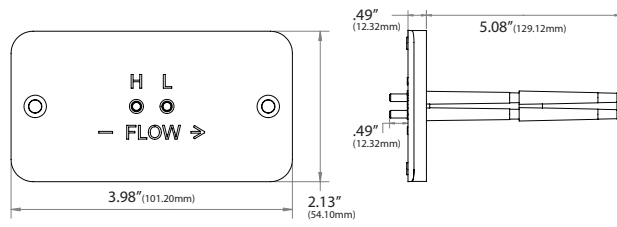


DIMENSIONAL DRAWING

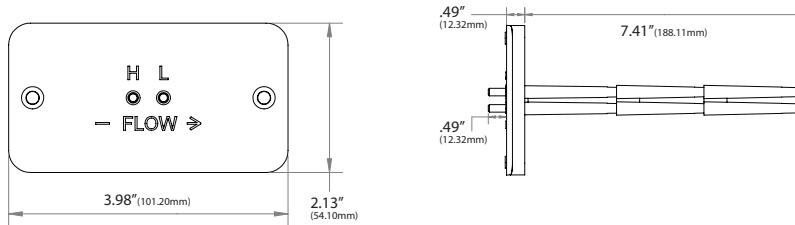
PT 3"



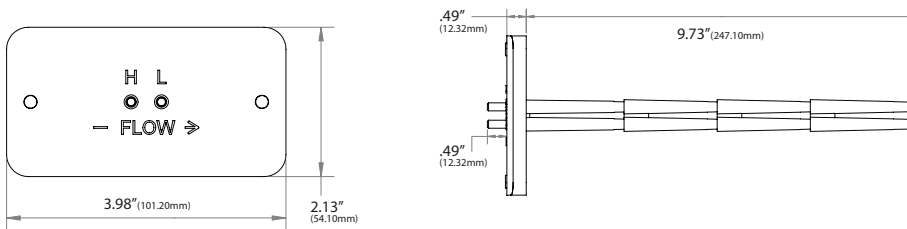
PT 5.2"



PT 7.5"



PT 9.7"



Standard View

STANDARD ORDERING

Model # Example: **PT 5.2"** -OR- **130141**

Model #	Item #	Description	Insertion Length	Sensing Points	Duct Size
PT 3"	130140	3.0" Pitot Tube with Foam Gasket	3.0" (7.6 cm)	1 Set	4 - 6" (10.2 - 15.2 cm)
PT 5.2"	130141	5.2" Pitot Tube with Foam Gasket	5.2" (13.2 cm)	2 Sets	6 - 8" (15.2 - 20.3 cm)
PT 7.5"	130142	7.5" Pitot Tube with Foam Gasket	7.5" (19.1 cm)	3 Sets	8 - 10" (20.3 - 25.4 cm)
PT 9.7"	130143	9.7" Pitot Tube with Foam Gasket	9.7" (24.6 cm)	4 Sets	10 - 18" (25.4 - 45.7 cm)

