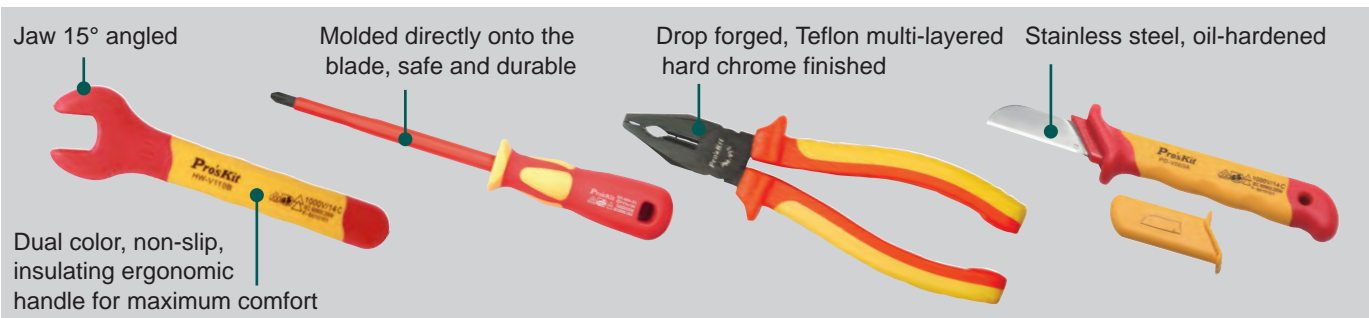
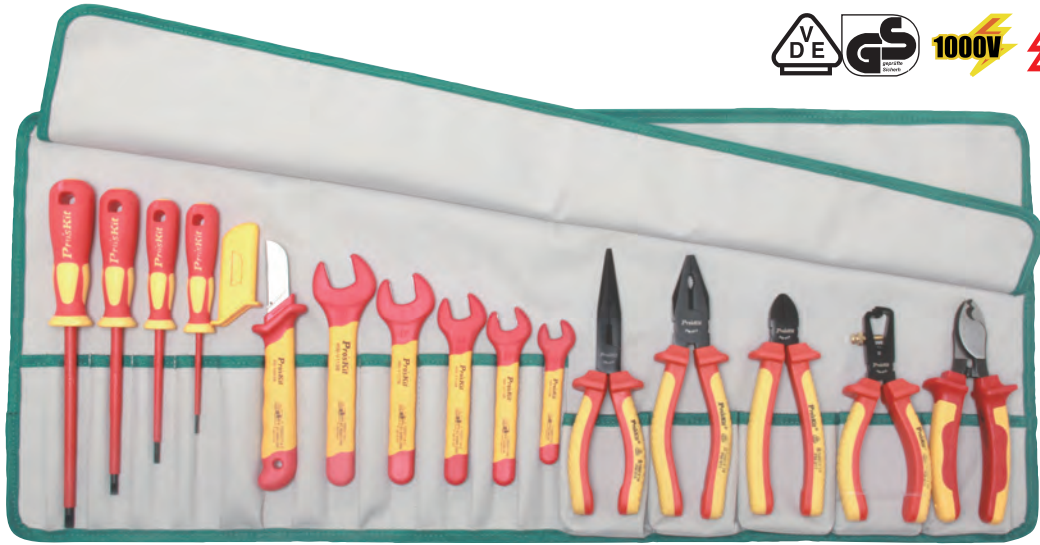


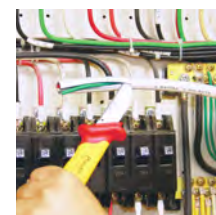
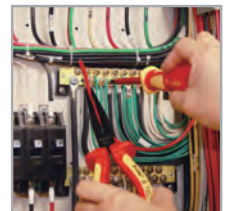
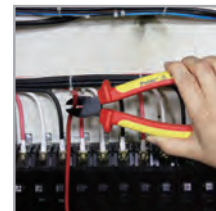
**PK-2813M**

# 15 PCS 1000V INSULATED METRIC ROLL TOOL KIT

This roll tool set provides reliable 1000V tools which ensure users' safety when working in a hazardous environment such as, very low or very high temperature or high voltage. The tools come with dual color non-slip insulating handles for maximum user comfort. They are packaged in a rugged PVC (600D) tool bag for easy storage and convenient carrying.



Contents	
PM-911	Insulated combination plier (195mm)
PM-917	Insulated side cutter (165mm)
PM-910	Insulated wire stripping plier (160mm)
PM-918	Insulated long nose plier (200mm)
SR-V206	Insulated cable cutter 150mm (22mm <sup>2</sup> )
HW-V110B	Insulated single open end wrench 10mm
HW-V113B	Insulated single open end wrench 13mm
HW-V114B	Insulated single open end wrench 14mm
HW-V117B	Insulated single open end wrench 17mm
HW-V119B	Insulated single open end wrench 19mm
SD-800-S2.5	⊖ Insulated screwdriver (-2.5x75mm)
SD-800-S4.0	⊖ Insulated screwdriver (-4.0x100mm)
SD-800-S5.5	⊖ Insulated screwdriver (-5.5x125mm)
SD-800-S6.5	⊖ Insulated screwdriver (-6.5x150mm)
PD-V003A	Insulated straight blade cable knife 50X180mm



Picture for reference only. Please check with distributor for exact offers. All specifications are subject to change without notice.