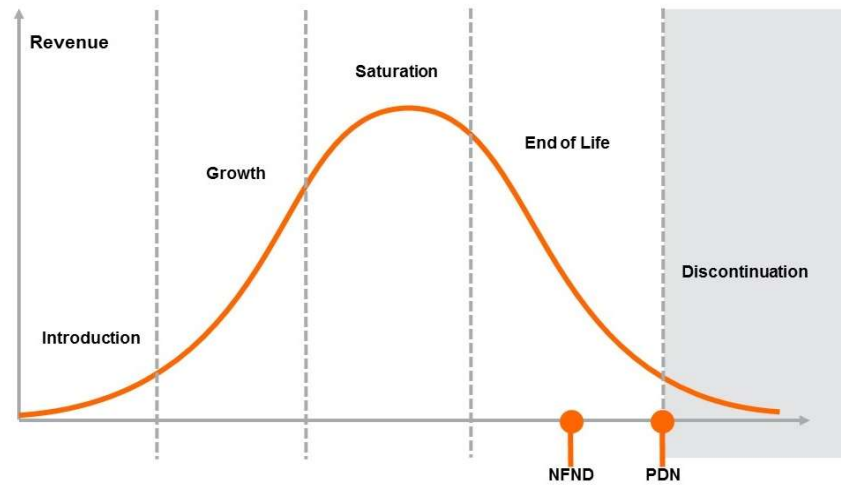


Light is OSRAM

Product Or Individual Q-Code Discontinuation (acc. JEDEC J-STD-048)
OS-PDN-2021-067

15 June 2021

Last order:	30 June 2021
Last delivery:	30 June 2021



Please direct your feedback to your local Sales office.

DISCONTINUED				NEW (REPLACEMENT)		
Device	Ordering Code	Brand	Reason for discontinuation	Device	Datasheet Ordering Code	Brand
GW JTL6SB.EM-E2H3-4005-1-50-R18	Q65112A9047	DURIS E2835	Discontinue of Wenrun customized devices	No replacement		
GW JTL6SB.EM-C2E2-2708-1-50-R18	Q65112A9050	DURIS E2835	Discontinue of Wenrun customized devices	No replacement		
GW JTL6SB.EM-C2E2-3007-1-50-R18	Q65112A9051	DURIS E2835	Discontinue of Wenrun customized devices	No replacement		
GW JTL6SB.EM-E2H3-5003-1-50-R18	Q65112A9052	DURIS E2835	Discontinue of Wenrun customized devices	No replacement		
GW JTL6SB.EM-E2H3-5702-1-50-R18	Q65112A9053	DURIS E2835	Discontinue of Wenrun customized devices	No replacement		
GW JTL6SB.EM-E2H3-6501-1-50-R18	Q65112A9054	DURIS E2835	Discontinue of Wenrun customized devices	No replacement		
GW JTL6SB.PM-E2H3-3007-1-50-R18	Q65112A9048	DURIS E2835	Discontinue of Wenrun customized devices	No replacement		
GW JTL6SB.PM-D2F3-2708-1-50-R18	Q65112A9049	DURIS E2835	Discontinue of Wenrun customized devices	No replacement		
GW JTL6SB.PM-F3J2-4005-1-50-R18	Q65112A9055	DURIS E2835	Discontinue of Wenrun customized devices	No replacement		
GW JTL6SB.PM-F3J2-5003-1-50-R18	Q65112A9056	DURIS E2835	Discontinue of Wenrun customized devices	No replacement		
GW JTL6SB.PM-F3J2-5702-1-50-R18	Q65112A9057	DURIS E2835	Discontinue of Wenrun customized devices	No replacement		
GW JTL6SB.PM-F3J2-6501-1-50-R18	Q65112A9058	DURIS E2835	Discontinue of Wenrun customized devices	No replacement		
GW JTLPSA.EM-L22L24-6500-1-150-R18	Q65112A8428	DURIS E2835	Discontinue of Wenrun customized devices	No replacement		
GW JTLPSA.EM-L22L24-5700-1-150-R18	Q65112A8429	DURIS E2835	Discontinue of Wenrun customized devices	No replacement		
GW JTLPSA.EM-L22L24-5000-1-150-R18	Q65112A8430	DURIS E2835	Discontinue of Wenrun customized devices	No replacement		
GW JTLPSA.EM-L22L24-4000-1-150-R18	Q65112A8431	DURIS E2835	Discontinue of Wenrun customized devices	No replacement		
GW JTLPSA.EM-L21L23-3000-1-150-R18	Q65112A8432	DURIS E2835	Discontinue of Wenrun customized devices	No replacement		
GW JTLPSA.EM-L21L23-2700-1-150-R18	Q65112A8433	DURIS E2835	Discontinue of Wenrun customized devices	No replacement		
GW JTLPSC.EM-L24L26-5700-1-150-R18	Q65112A8416	DURIS E2835	Discontinue of Wenrun customized devices	No replacement		
GW JTLPSC.EM-L24L26-6500-1-150-R18	Q65112A8417	DURIS E2835	Discontinue of Wenrun customized devices	No replacement		
GW JTLPSC.EM-L24L26-4000-1-150-R18	Q65112A8418	DURIS E2835	Discontinue of Wenrun customized devices	No replacement		
GW JTLPSC.EM-L24L26-5000-1-150-R18	Q65112A8419	DURIS E2835	Discontinue of Wenrun customized devices	No replacement		
GW JTLPSC.EM-L23L25-2700-1-150-R18	Q65112A8421	DURIS E2835	Discontinue of Wenrun customized devices	No replacement		
GW JTLPSC.EM-L23L25-3000-1-150-R18	Q65112A8422	DURIS E2835	Discontinue of Wenrun customized devices	No replacement		
GW JTLRSA.EM-LB2LD2-2700-1-100-R18	Q65112A8343	DURIS E2835	Discontinue of Wenrun customized devices	No replacement		
GW JTLRSA.EM-LB2LD2-3000-1-100-R18	Q65112A8344	DURIS E2835	Discontinue of Wenrun customized devices	No replacement		
GW JTLRSA.EM-LD2LF2-4000-1-100-R18	Q65112A8345	DURIS E2835	Discontinue of Wenrun customized devices	No replacement		
GW JTLRSA.EM-LD2LF2-5000-1-100-R18	Q65112A8346	DURIS E2835	Discontinue of Wenrun customized devices	No replacement		
GW JTLRSA.EM-LD2LF2-5700-1-100-R18	Q65112A8347	DURIS E2835	Discontinue of Wenrun customized devices	No replacement		

DISCONTINUED				NEW (REPLACEMENT)		
Device	Ordering Code	Brand	Reason for discontinuation	Device	Datasheet Ordering Code	Brand
GW JTLRSA.EM-LD2LF2-6500-1-100-R18	Q65112A8348	DURIS E2835	Discontinue of Wenrun customized devices	No replacement		