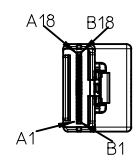
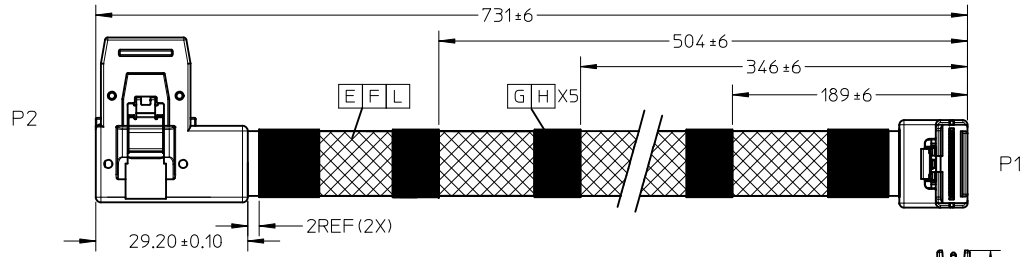
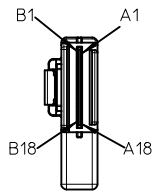


REVISIONS				
EC NO	DATE	REV	DESCRIPTION	CHANGER
NA	2010/06/10	A	INITIAL RELEASE	LUCKY
CY11-5360	2010/08/27	B	CHANGE CUSTOMER VERSION FROM 'A00' TO 'A01'(LABEL)	LUCKY



B C D I

BKPLN

A B D M

CNTRL

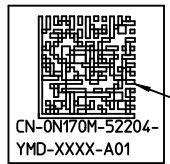
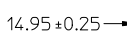
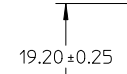
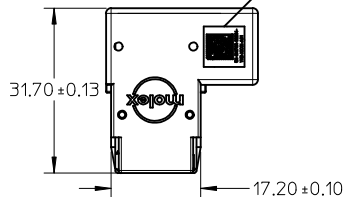
-25REF (2X)

15REF (3X)

K

J

SEE NOTES 7

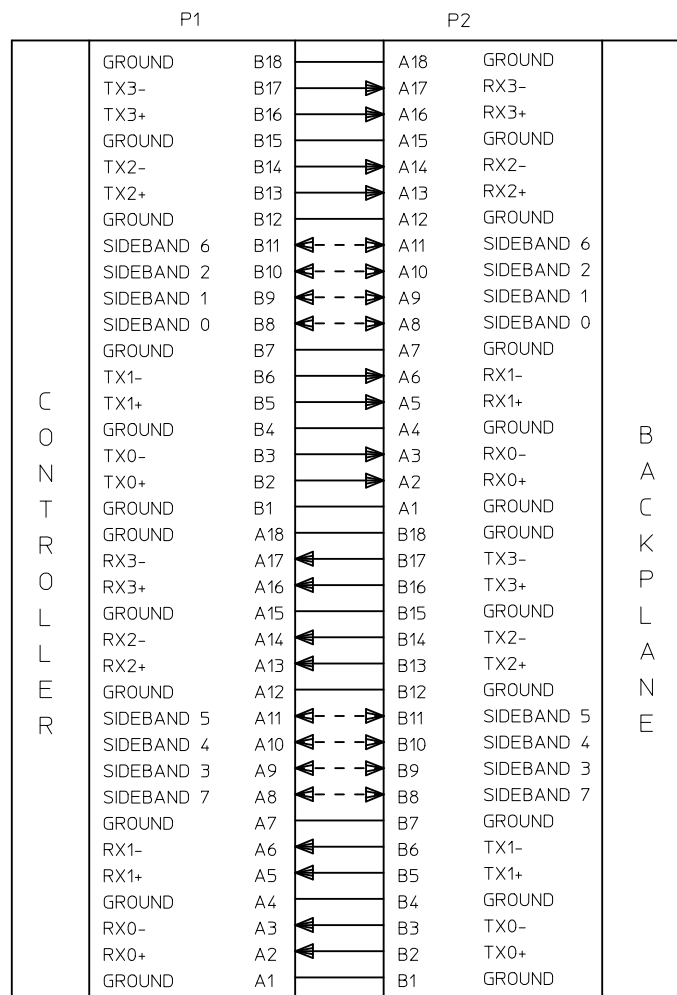


READING AS: CN0N170M52204YMDXXXXA01

LABEL FORMART DETAIL

IPASS™ IS A TRADEMARK OF MOLEX

ENTER DESCRIPTION EC NO: USY2011-0242 DRWN: ZYU CHKD: W. LUCKY APPR: BLAU	QUALITY SYMBOLS = 0 = 0	GENERAL TOLERANCES (UNLESS SPECIFIED)		DIMENSION STYLE MM ONLY	SCALE ---	DESIGN UNITS METRIC	THIRD ANGLE PROJECTION		
		4 PLACES ± --- ± --- 3 PLACES ± --- ± --- 2 PLACES ± --- ± --- 1 PLACE ± --- ± ---	mm INCH	DRAWN BY: ZYU DATE: 2010/10/11 CHECKED BY: W. LUCKY DATE: 2010/10/11 APPROVED BY: BLAU DATE: 2010/10/11	TITLE 36CKTIPASS RT ANG RT EXIT-RT ANG .731M				
		ANGULAR ± --- °		MATERIAL NO. 1110964002	MOLEX INCORPORATED			SHEET NO. 1 OF 3	
		DRAFT WHERE APPLICABLE MUST REMAIN WITHIN DIMENSIONS		SIZE A3	THIS DRAWING CONTAINS INFORMATION THAT IS PROPRIETARY TO MOLEX INCORPORATED AND SHOULD NOT BE USED WITHOUT WRITTEN PERMISSION				



NOTE:
1. ALL SIGNAL GROUNDS ARE BUSSED IN PCB.

TM
IPASS IS A TRADEMARK OF MOLEX.

ITEM	DESCRIPTION	L (mm)	QTY.
M	Ipss R/A Latch		1PCS
L	1P*30AWG;SHLD:FEP;BU:0.90*2.21MM;Twin-ax	710REF	8PCS
K	Blank label 5x10mm Thermal Transfer		2PCS
J	Blank Label 0.375"*0.375" Brady# B-423		1PCS
I	PCBfor Ipss 36CKT R/A Right FR406		1PCS
H	HST F 10MM 125C (UL) BLK	A/R	5PCS
G	KUNJIE ACETATE CLOTH TAPE 12MM BLACK	A/R	5PCS
F	Braid sleeving OD:9.5mm Black HF	685REF	1PCS
E	8C*30AWG;TS:GY:P=1.0MM;UL2651	710REF	1PCS
D	PE G812 LDPE NATURAL		A/R
C	Ipss Latach(Local vender)		1PCS
B	PBT POLYESTER 30% GF BLACK UL94V-0		A/R
A	PCB for 36ckt Latch Inside		1PCS

ENTER DESCRIPTION	2010/10/11
EC NO: USY2011-0242	2010/10/11
DRWN: ZYU	2010/10/11
CHKD: W. LUCKY	2010/10/11
APPR: BLAU	2010/10/11
REV	DESCRIPTION
B	

QUALITY SYMBOLS	▽=0
	◻=0
GENERAL TOLERANCES (UNLESS SPECIFIED)	
4 PLACES	± --- ± ---
3 PLACES	± --- ± ---
2 PLACES	± --- ± ---
1 PLACE	± --- ± ---
ANGULAR	± --- °
DRAFT WHERE APPLICABLE	MUST REMAIN WITHIN DIMENSIONS

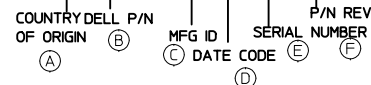
DIMENSION STYLE		SCALE	DESIGN UNITS	THIRD ANGLE PROJECTION
MM ONLY		---	METRIC	☉
DRAWN BY	DATE	TITLE		
ZYU	2010/10/11	36CKTIPASS RT ANG RT EXIT-RT ANG .731M		
CHECKED BY	DATE	MOLEX INCORPORATED		
W. LUCKY	2010/10/11	MATERIAL NO. 1110964002		
APPROVED BY	DATE	DOCUMENT NO. SD-111096-4002		
BLAU	2010/10/11	SHEET NO. 2 OF 3		

MATERIAL NO.		DOCUMENT NO.	SHEET NO.
1110964002		SD-111096-4002	2 OF 3
THIS DRAWING CONTAINS INFORMATION THAT IS PROPRIETARY TO MOLEX INCORPORATED AND SHOULD NOT BE USED WITHOUT WRITTEN PERMISSION			

NOTES

1. IPASS INNERMOLD WITH PE RESIN;
IPASS OUTERMOLD WITH PBT RESIN;
2. THIS PRODUCT MUST MEET EU CHEMICAL SUBSTANCE SPECIFICATION FOR PRODUCTS(EU 2002/95/EC RoHS).
3. FOR IPASS END ASSEMBLY PLS REFERS TO E-74562-010 FOR DETAIL.
4. THE PRODUCT ELECTRICAL PERFORMANCE AND MECHANICAL PERFORMANCE REFER TO SAS 2.0 INDUSTRIAL STANDARD
5. MECHANICAL PERFORMANCE REFER TO PS-75783-001.
6. RECOMMENDED MINIMUM BEND RADIUS IS 28MM.
7. TEXT NEED USE FONT ARIAL AND THE TEXT SHOULD BE 3MM MIN.
8. LABEL DETAIL
 - 8.1 FOR LABEL DETAIL PLEASE REFER TO DELL SPECIFICATION NUMBER:
13190 REV. A28-00 TYPE W
 - 8.2 LABEL FORMART:
CN-0N170M-52204-YMD-XXXX-A01
 - 8.3.TEXT NEED USE FONT VERDANA AND THE TEXT SHOULD BE 3PT MINIMUM.
9. CABLES-REFERENCE DOCUMENTS
DN362 SPEC,ENG,STD,DFE
6T198 SPEC,DFE, RESTRICTED-MTL
13190 SPEC, SPLR, BRCD, LBL.(USE IF SHIPPED DIRECTLY TO DELL)
ENG0000116 DOC, PROC, CABLE, ENG
ENG0000117 SPEC, PRCS, QUAL, CBL, ELEC
ENG0000121 DOC, PROC, PPAP, CBL, ENG
ASME Y14.5M-1994 DIMENSIONING AND TOLERANCING

PS:
DELL LABEL SPEC(13190 A28-00) EXTRACT
EVERY SECTION SEE DETAIL REMARK:
CN-0N170M-52204-YMD-XXXX-A01



- (A) ORIGINAL COUNTRY
- (B) DELL P/N
- (C) MFG ID
- (D) DATE CODE

1.FIRST CHARACTER IS YEAR CODE: LAST NUMBER OF THE YEAR.
2.SECOND CHARACTER IS MONTH CODE: SEE CHART.

JAN	FEB	MAR	APR	MAY	JUN	JUL	AUG	SEP	OCT	NOV	DEC
1	2	3	4	5	6	7	8	9	A	B	C

3.3RD CHARACTER IS DAY CODE: 1ST -- 9TH = 1 -- 9 AND 10ST -- 31ST
= A -- V.

- (E) SERIAL NUMBER.
XXXX (DELL SERIAL NUMBER): SUPPLIERS WILL BE ALLOWED THE USE OF CHARACTERS 0-9, A-ON THE FIRST POSITION OF THE SEQUENCE NUMBER, WITH NO RESTRICTIONS ON THE 2NDTHROUGH 4TH POSITIONS PROVIDED THAT EACH SEQUENCE NUMBER IS INDEED UNIQUE.

- (F) P/N REV

ENTER DESCRIPTION EC NO: USY2011-0242 DRWN:ZYYU 2010/10/11 CHKD:W.LUCKY 2010/10/11 APPR:BLAU 2010/10/11	QUALITY SYMBOLS ▽=0 ▽=0	GENERAL TOLERANCES (UNLESS SPECIFIED)		DIMENSION STYLE MM ONLY		SCALE ---	DESIGN UNITS METRIC	THIRD ANGLE PROJECTION		
			mm	INCH	DRAWN BY ZYYU	DATE 2010/10/11	TITLE 36CKTIPASS RT ANG RT EXIT-RT ANG .731M			
		4 PLACES	± ---	± ---	CHECKED BY W.LUCKY	DATE 2010/10/11	MOLEX INCORPORATED			
		3 PLACES	± ---	± ---	APPROVED BY BLAU	DATE 2010/10/11				
2 PLACES	± ---	± ---	ANGULAR ± ---°		MATERIAL NO. 1110964002	DOCUMENT NO. SD-111096-4002	SHEET NO. 3 OF 3			
1 PLACE	± ---	± ---	DRAFT WHERE APPLICABLE MUST REMAIN WITHIN DIMENSIONS		SIZE A3	THIS DRAWING CONTAINS INFORMATION THAT IS PROPRIETARY TO MOLEX INCORPORATED AND SHOULD NOT BE USED WITHOUT WRITTEN PERMISSION				