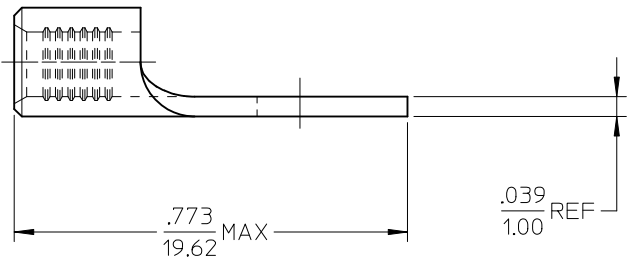
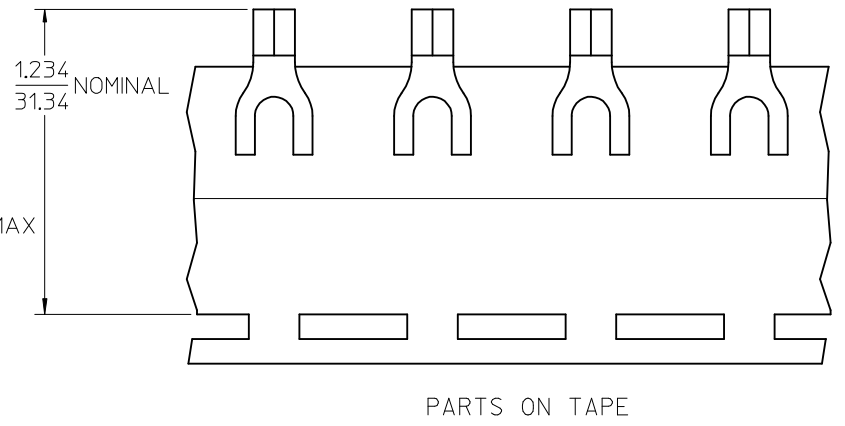
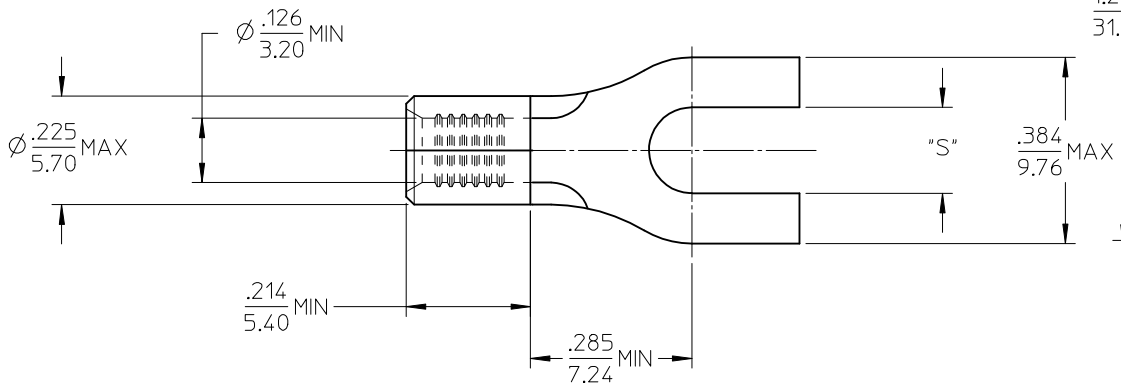


10	9	8	7	6	5	4	3	2	19203
MATERIAL NO.	ENG. NO.	STUD SIZE	"S" MAX	DESCRIPTION					
192030382	19203-0382	10	.215/5.46	LOOSE					
192030477	192030382T	10	.215/5.46	TAPE					



NOTE(S):

1. MATERIAL: STEEL
2. FINISH: NICKEL PLATED
3. WIRE SIZE: 12-10 AWG (4.0-6.0 MM²)
4. PART IS ROHS COMPLIANT.
5. AMBIENT OPERATING TEMPERATURE UP TO 900 °F (483 °C).

ADDED OPERATING TEMP EC NO: ETC2007-0297 DRAWN BY: DRW:HEHLE 2007/03/13 CHKD: JMACNEIL 2007/03/13 APPR: JMACNEIL 2007/03/14	QUALITY SYMBOLS ▽=0 ▽=0	GENERAL TOLERANCES (UNLESS SPECIFIED)		DIMENSION STYLE		SCALE	DESIGN UNITS	THIRD ANGLE PROJECTION		
			mm	INCH	IN/MM		1:1	INCH		
		4 PLACES	±---	±---	DRAWN BY	DATE	TITLE SPADE TONGUE TERMINAL, 12-10 AWG, KRIMPTITE, 900 DEG F (483 DEG C)			
		3 PLACES	±---	±---	DMYRICK	2005/04/07				
2 PLACES	±---	±---	CHECKED BY	DATE	MOLEX INCORPORATED					
1 PLACE	±---	±---	RDEROSS	2005/04/07						
ANGULAR ±---°				APPROVED BY	DATE	DOCUMENT NO.		SHEET NO.		
				RDEROSS	2005/04/07	SD-19203-022		1 OF 1		
DRAFT WHERE APPLICABLE MUST REMAIN WITHIN DIMENSIONS				MATERIAL NO.		THIS DRAWING CONTAINS INFORMATION THAT IS PROPRIETARY TO MOLEX INCORPORATED AND SHOULD NOT BE USED WITHOUT WRITTEN PERMISSION				
				SEE CHART						
				SIZE B						