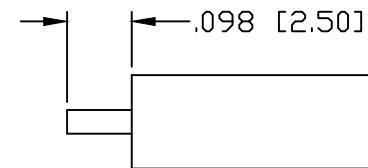
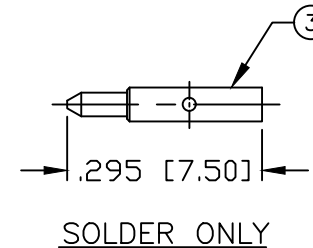
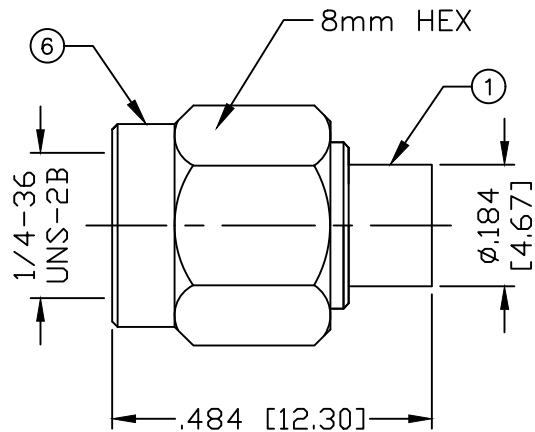


PART NO.

RSA-3500-141-03

REV	DESCRIPTION	DWN	DATE	APPROVED
A	UPDATED DWG DIMS AND FORMAT	CZS	01/15/20	JDMc

RECOMMENDED STRIPPING DIMENSIONSPECIFICATIONS:

IMPEDANCE: 50 Ohms
 FREQUENCY RANGE: 0-18 GHz
 INSERTION LOSS(dB): $0.03 \times \sqrt{f(\text{GHz})}$
 VSWR: 1.3 MAX.
 WORKING VOLTAGE: 500 V rms Max. @ Sea Level
 INSULATION RESISTANCE: 5000 MΩ
 TEMPERATURE RANGE: -65°C TO 85°C
 FOR .141 SEMI RIGID, RG-402/U & BELDEN 1673A CABLE

#	DESCRIPTION	QTY	MATERIAL	FINISH
6	COUPLING NUT	1	SST	PASSIVATED
5	RETAINING RING	1	Be.Cu.	NICKEL
4	GASKET	1	SI RUBBER	---
3	PIN	1	BRASS	GOLD
2	INSULATOR	1	PTFE	---
1	BODY	1	BRASS	GOLD

CUSTOMER OUTLINE DRAWING	
ALL DIMENSIONS ARE REFERENCE ONLY	
UNLESS OTHERWISE SPECIFIED: DIMENSIONS ARE IN INCHES AND [MILLIMETERS]	
DRAWN C. ZUÑIGA	01/15/20
CHECKED	
ORJ DRAWN C. ZUÑIGA	05/20/08

**RoHS
COMPLIANT**

PROPRIETARY AND CONFIDENTIAL
 THIS DRAWING CONTAINS
 INFORMATION PROPRIETARY TO
 RF INDUSTRIES. ANY
 UNAUTHORIZED USE OF THIS
 DRAWING IS EXPRESSLY
 PROHIBITED WITHOUT WRITTEN
 PERMISSION FROM RF
 INDUSTRIES. ANY VIOLATION IS
 PUNISHABLE UNDER U.S.
 COPYRIGHT LAWS.

RFconnectors
 DIVISION OF RF INDUSTRIES, LTD. (858) 549-6345 FAX
 RFINDUSTRIES.COM
 7610 MIRAMAR RD.
 SAN DIEGO, CA 92126
 (858) 549-6340

SMA PLUG DIRECT SOLDER
.141 SEMI RIGID CABLE

CABLE GROUP	DWG #	REVISION
SR2	RSA-3500-141-03	A
FORMAT	SCALE	CONTROL #
A	NTS	1560
		SHEET 1 OF 1