

6

5

4

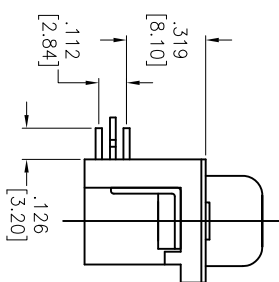
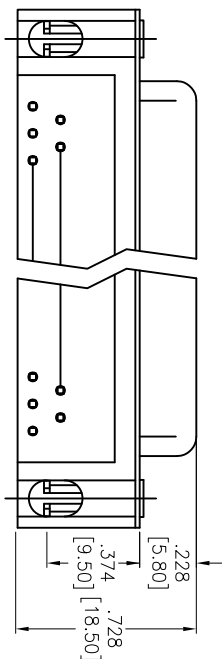
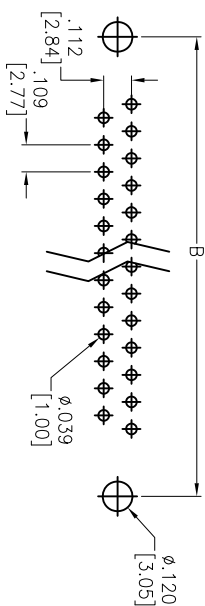
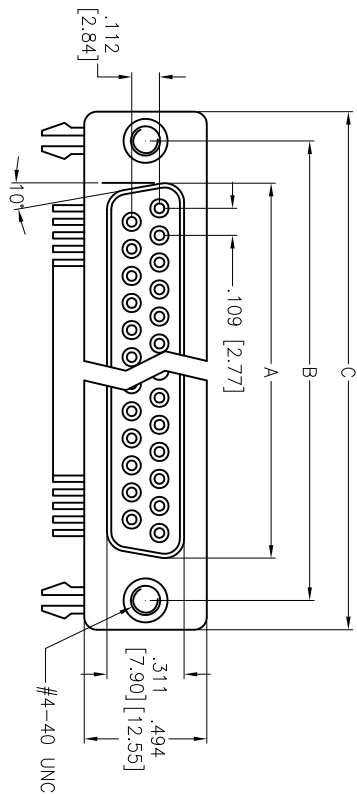
3

2

1

APPROVED: _____
 DATE: _____ TITLE: _____

Rev	AWO #	Description	Date	Appr
-		RELEASED	10/19/04	
A		REDRAWN	7/20/10	
B		REVISED DIM.	07/05/12	
C		REVISED SPEC.	3/22/13	



SPECIFICATIONS:

Material: Insulator: PBT, glass reinforced, rated UL 94V-0
 Insulator color: Black
 Contacts: Copper Alloy
 Shell: Steel, Tin plated
 Clinch Nut: Copper Alloy, Nickel plated
 Boardlock: Brass, Tin plated
 Plating: Gold over Nickel underplate on contact area
 Electrical: Operating voltage: 250 VAC max
 Current rating: 3 Amps max
 Contact resistance: 20 mohms max
 Insulation resistance: 1,000 Mohms min
 Dielectric withstanding voltage: 1,000 VAC for 1 minute
 Temperature Rating: Operating temperature: -20°C to +85°C
 Environmental: Lead free, RoHS compliant

DXXX	NO. OF CONTACTS	DIMENSIONS		
		A	B	C
DE09	9	.643 [16.33]	.984 [24.99]	1.213 [30.81]
DA15	15	.972 [24.70]	1.311 [33.30]	1.543 [39.20]
DB25	25	1.512 [38.40]	1.852 [47.04]	2.089 [53.05]
DC37	37	2.157 [54.80]	2.500 [63.50]	2.732 [69.40]

ADAM TECH

909 Rahway Avenue, Union, NJ 07083
 Phone: 908-687-5000 Fax: 908-687-5710

TITLE: D-SUB SOCKET, .318" FOOTPRINT, FORKED BOARD LOCKS, #4-40 FLUSH THREADED INSERTS
 SIZE: X PART NO.: DXXX-SL-24
 REF: S00087T SCALE: NTS SHEET 1 OF 1

UNLESS OTHERWISE SPECIFIED ALL DIMENSIONS ARE INCHES [MM] TOLERANCES: EXCEPT AS NOTED INCHES

.X	± .10	ϕ X	± .10
.XX	± .020	ϕ XX	± .015
.XXX	± .015	ϕ XXX	± .010

APPROVALS	DATE	
DRAWN	SS	10/19/04
CHECKED		
APPROVED		



6

5

4

3

2

1