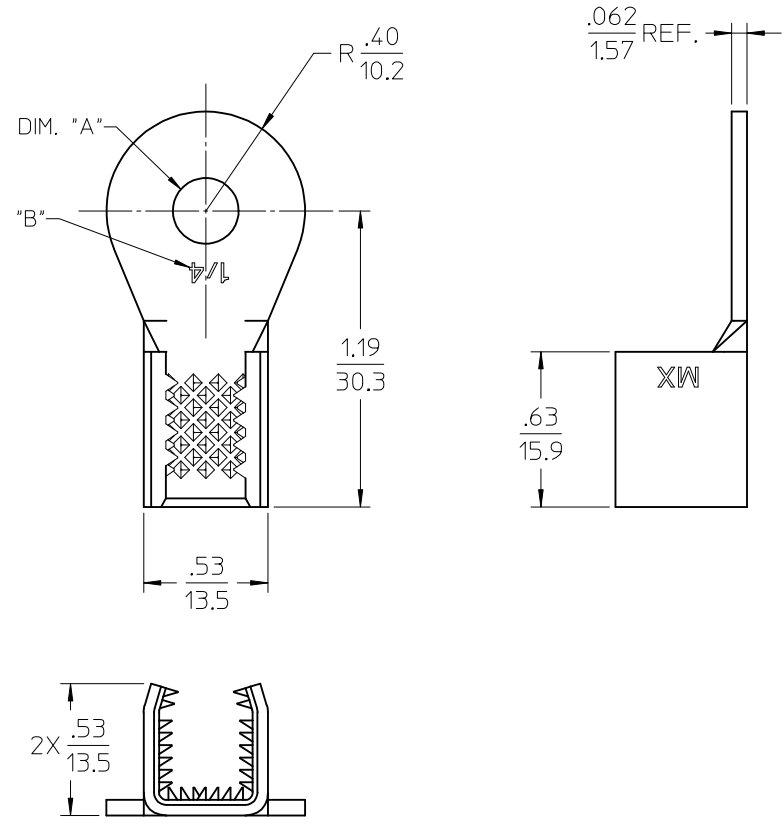
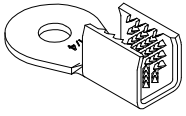


| MATERIAL NUMBER | DIM. "A" | "B" |
|-----------------|-------------|------|
| 191951007 | Ø.265/6.73 | 1/4 |
| 191951035 | Ø.328/8.33 | 5/16 |
| 191951021 | Ø.390/9.91 | 3/8 |
| 191951037 | Ø.515/13.08 | 1/2 |



- NOTES:
1. MATERIAL: COPPER ALLOY.
 2. FINISH: ELECTRO TIN PLATE.
THICKNESS=100MICRONS MINIMUM.
 3. PRODUCT SPECIFICATION: PS-19195-001.
 4. PART USED TO CONNECT COPPER OR ALUMINUM SINGLE MAGNET WIRE OR MULTIPLE WIRE COMBINATIONS.
 5. COMBINATIONS OF WIRES ARE EITHER MAGNET WIRE TO MAGNET WIRE OR MAGNET WIRE TO LEAD WIRE.

| | | | | | | | | |
|---|-----------------------------------|---|--|------------------------|----------------------|------------------------|--------------------|--|
| EC NO: ETC2003-0089 DRWN: JPAWLICK 2002/09/27 CHKD: JPAWLICK 2002/09/27 APPR: RDEROSS 2002/09/27 | QUALITY SYMBOLS ▽ = 0 ∇ = 0 | GENERAL TOLERANCES (UNLESS SPECIFIED) | | SCALE 2:1 | DESIGN UNITS INCH | THIRD ANGLE PROJECTION | REVISE ON CAD ONLY | |
| | | DIMENSION STYLE IN/MM | | DRAWN BY JPAWLICK | | DATE 02/04/04 | | MAGKRIMP ROUND RING 10,380-52,480 CMA |
| | | 4 PLACES ± --- ± --- 3 PLACES ± --- ± --- 2 PLACES ± --- ± .010 1 PLACE ± 0.25 ± --- | | CHECKED BY JPAWLICK | | DATE 02/04/04 | | |
| | | ANGULAR ± 2 ° DRAFT WHERE APPLICABLE MUST REMAIN WITHIN DIMENSIONS | | APPROVED BY RDEROSS | | DATE 02/04/04 | | MATERIAL NO. SEE CHART |