


DAISY-4X1-W

~50° wide beam

TECHNICAL SPECIFICATIONS:

Dimensions	182.0 x 40.0 mm
Height	20.2 mm
Fastening	pin, screw, clips
ROHS compliant	yes 

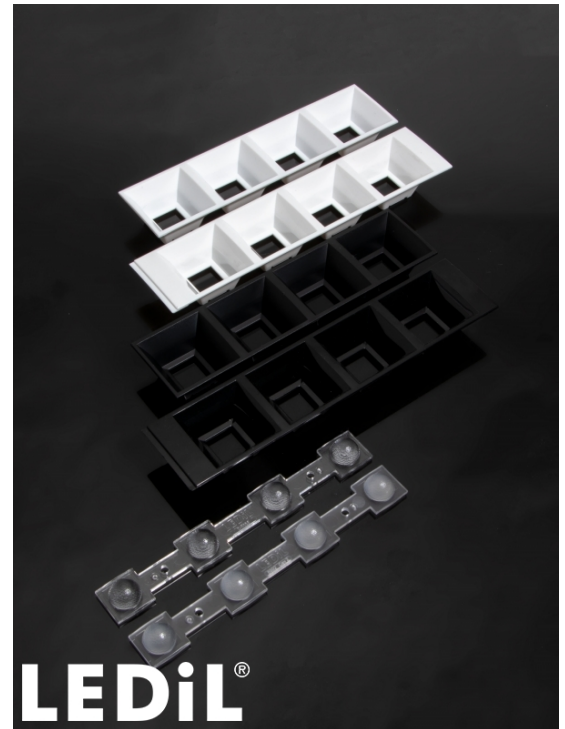
MATERIAL SPECIFICATIONS:

Component	Type	Material	Colour	Finish
C16588_DAISY-4X1-W	Linear lens	PMMA	clear	
C17535_DAISY-4X1-SHD2-MET-MATT	Shade	PC	metal	matt
C16590_DAISY-4X1-SHD	Shade	PC-ABS	black	gloss
C16784_DAISY-4X1-SHD-WHT	Shade	PC	white	gloss
C17422_DAISY-4X1-SHD2-MATT	Shade	PC	black	matt
C17423_DAISY-4X1-SHD2-WHT-MATT	Shade	PC	white	matt
C17528_DAISY-4X1-SHD-MET	Shade	PC	metal	gloss

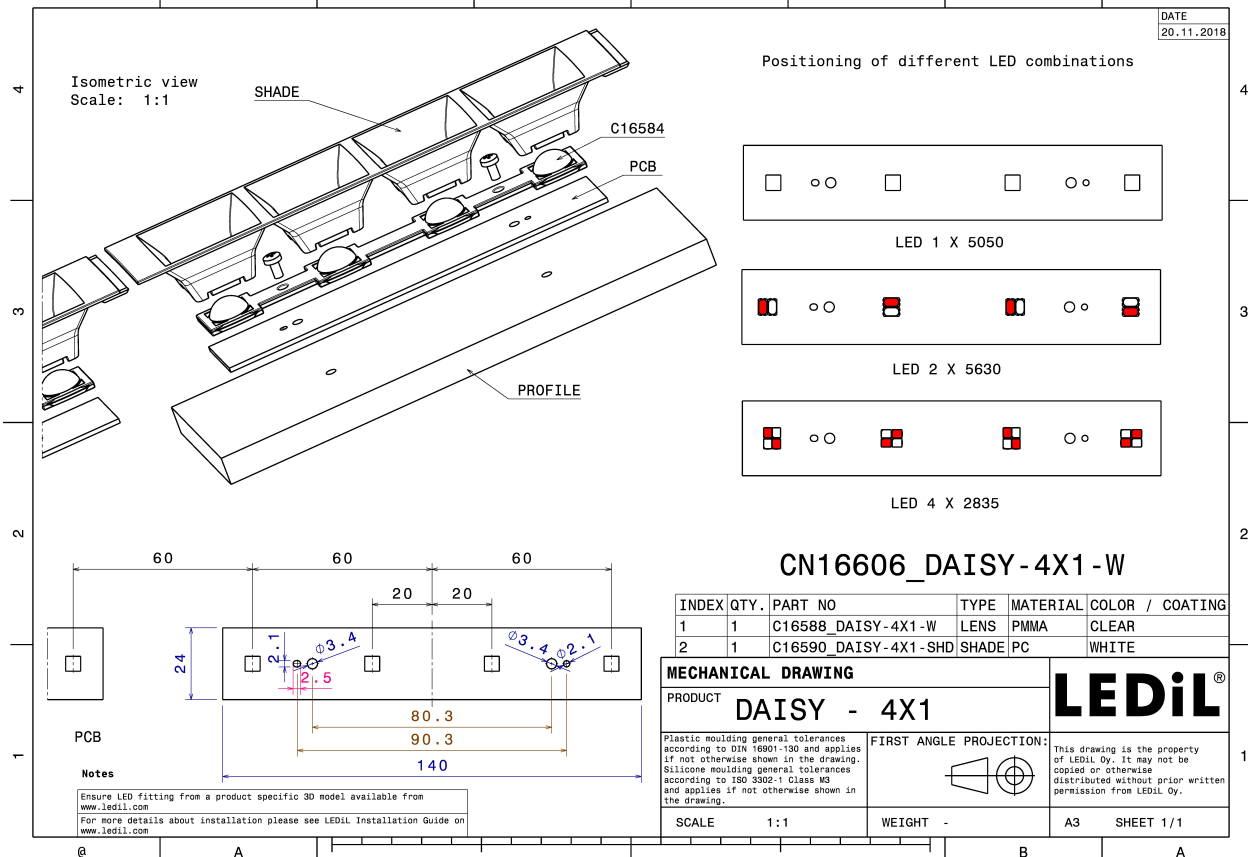
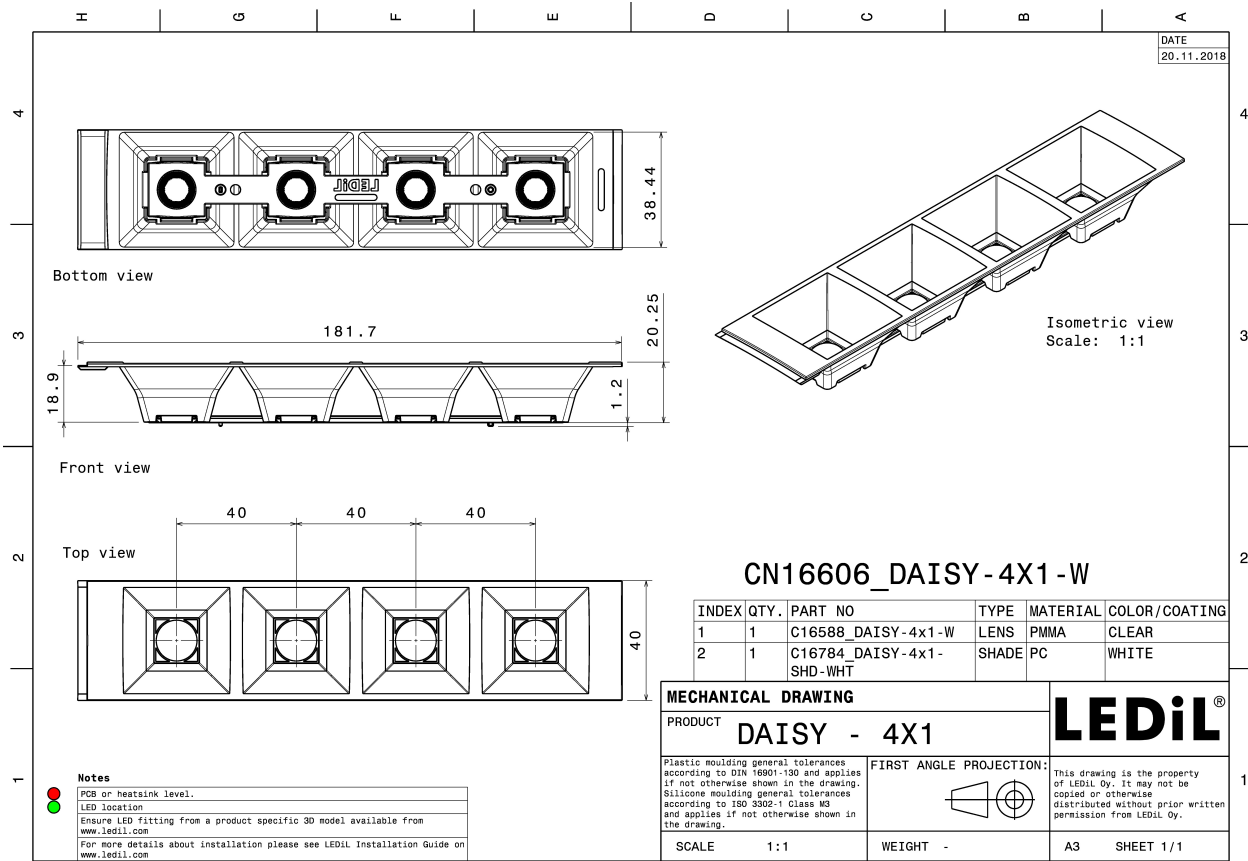
ORDERING INFORMATION:

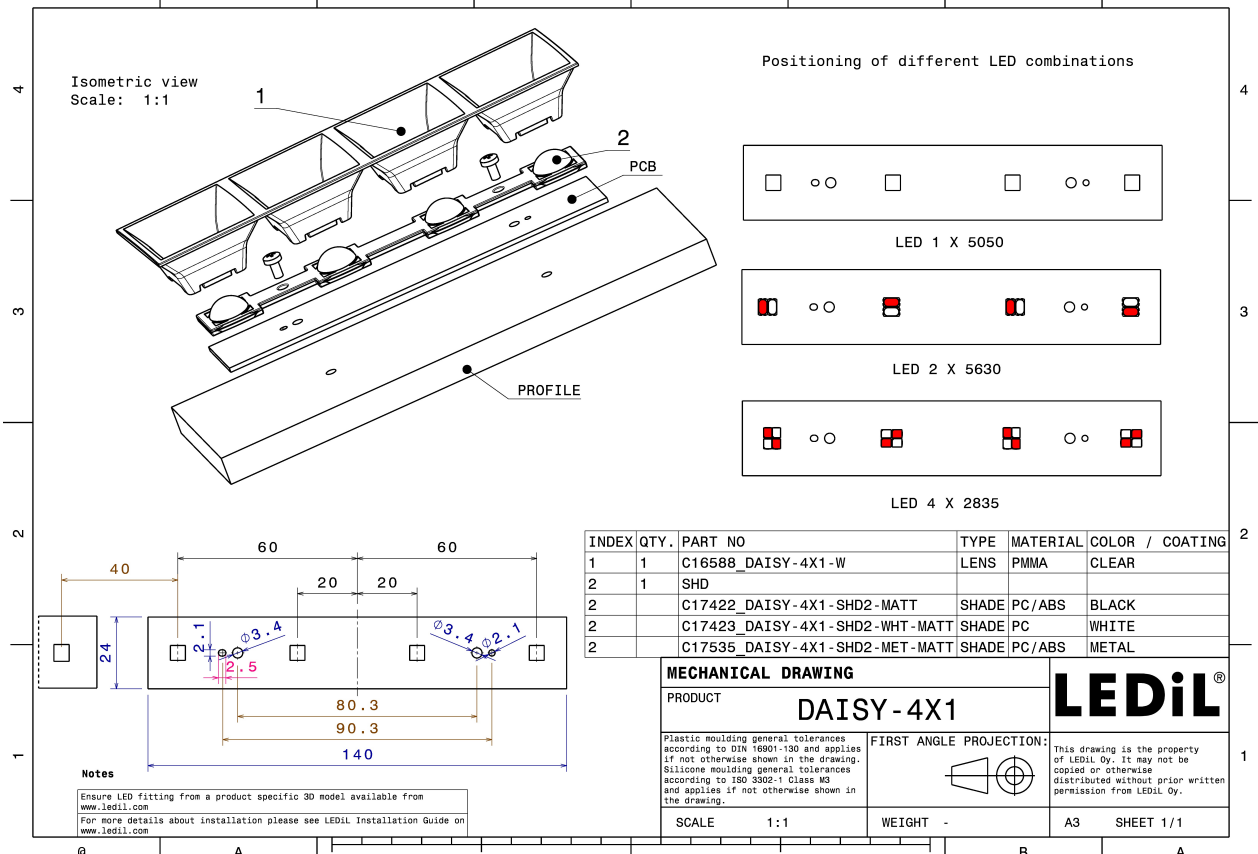
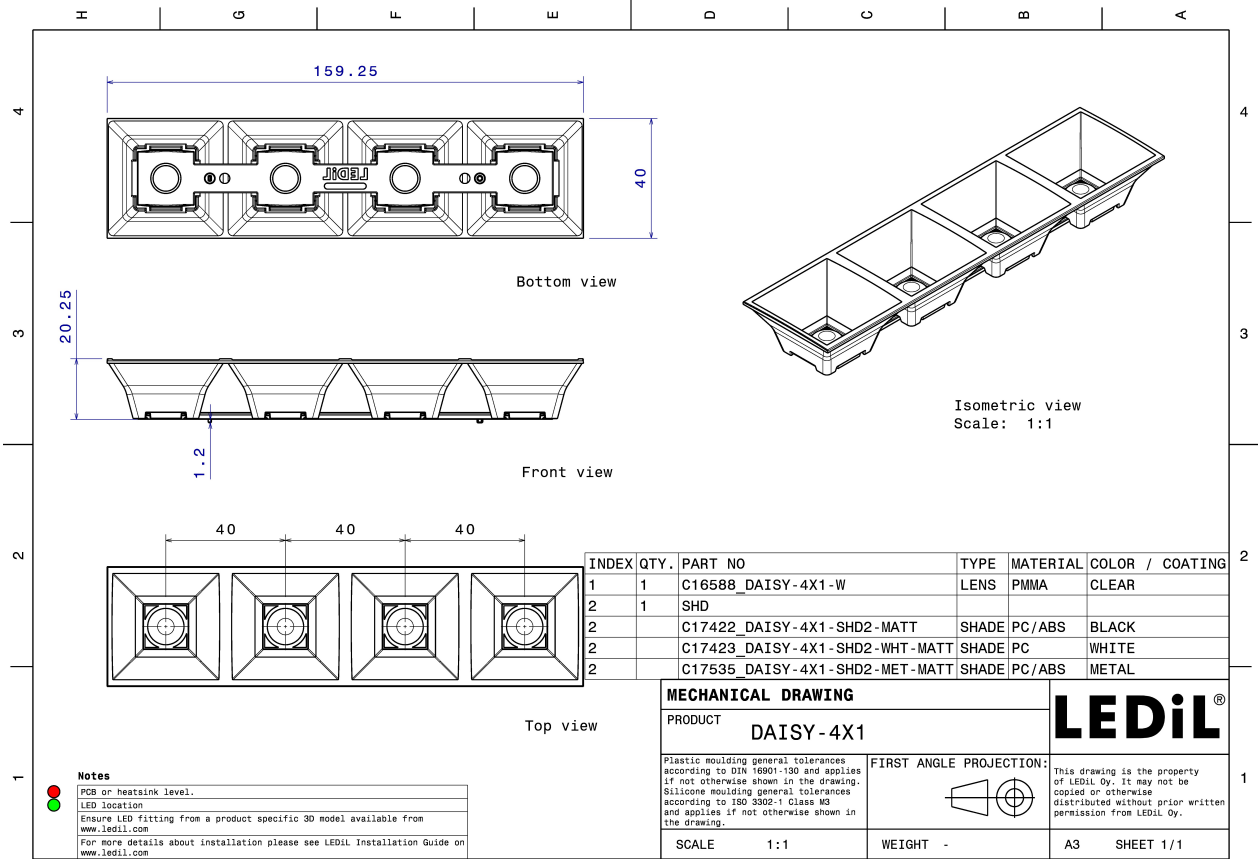
Quantities for one set:

Linear lens	1
Shade	1



Component		Qty in box	MOQ	MPQ	Box weight (kg)
C16588_DAISY-4X1-W » Box size: 480 x 280 x 300 mm	Linear lens	504	336	21	6.3
C16784_DAISY-4X1-SHD-WHT » Box size: 480 x 280 x 300 mm	Shade	168	336	42	8.6
C17535_DAISY-4X1-SHD2-MET-MATT » Box size: 480 x 280 x 300 mm	Shade	168	336	42	4.1
C17422_DAISY-4X1-SHD2-MATT » Box size: 480 x 280 x 300 mm	Shade	168	336	42	8.2
C17423_DAISY-4X1-SHD2-WHT-MATT » Box size: 480 x 280 x 300 mm	Shade	168	336	42	4.4
C16590_DAISY-4X1-SHD » Box size: 480 x 280 x 300 mm	Shade	168	336	42	4.3
C17528_DAISY-4X1-SHD-MET » Box size: 480 x 280 x 300 mm	Shade	168	336	42	4.7



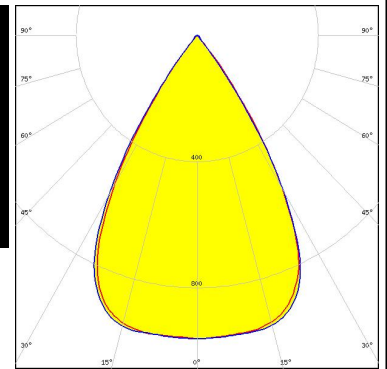


See also our general installation guide: www.ledil.com/installation_guide

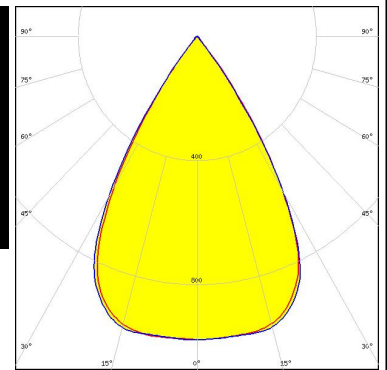
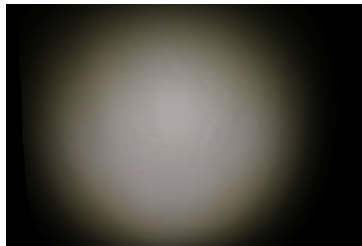
PHOTOMETRIC DATA (MEASURED):



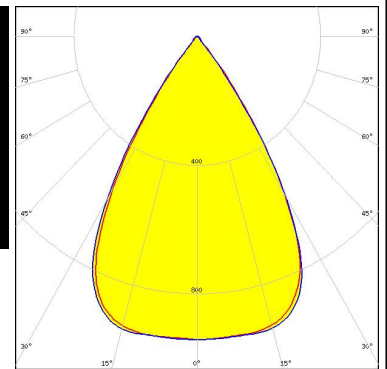
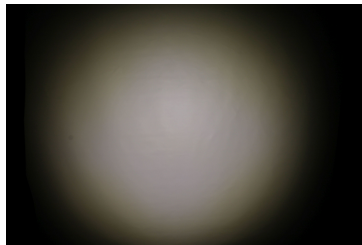
LED LIGHT ENGINE DAISY 16 LEDs 156mm x 20mm
 FWHM / FWTM 63.0° / 78.0°
 Efficiency 93 %
 Peak intensity 1 cd/lm
 LEDs/each optic 4
 Light colour White
 Required components:
 C17535_DAISSY-4X1-SHD2-MET-MATT



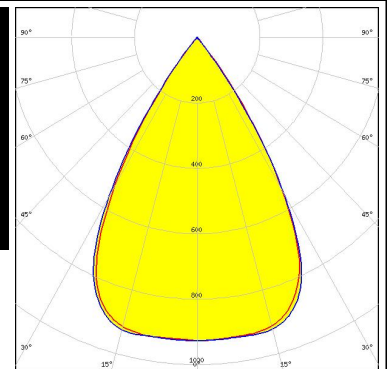
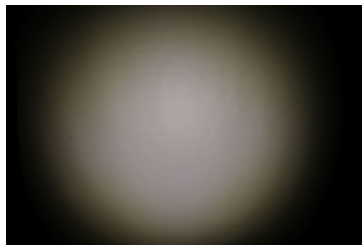
LED LIGHT ENGINE DAISY 16 LEDs 156mm x 20mm
 FWHM / FWTM 63.0° / 78.0°
 Efficiency 94 %
 Peak intensity 1 cd/lm
 LEDs/each optic 4
 Light colour White
 Required components:
 C17528_DAISSY-4X1-SHD-MET



LED LIGHT ENGINE DAISY 16 LEDs 156mm x 20mm
 FWHM / FWTM 64.0° / 78.0°
 Efficiency 94 %
 Peak intensity 0.9 cd/lm
 LEDs/each optic 4
 Light colour White
 Required components:
 C17423_DAISSY-4X1-SHD2-WHT-MATT



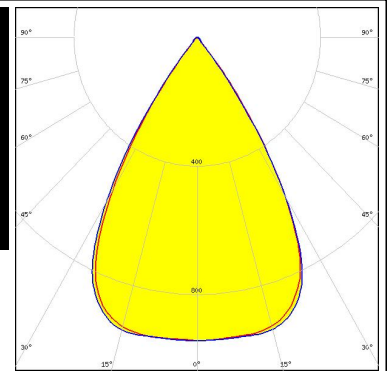
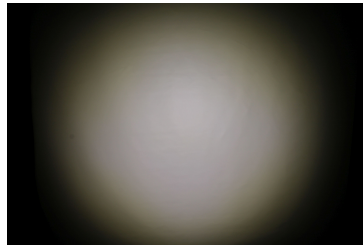
LED LIGHT ENGINE DAISY 16 LEDs 156mm x 20mm
 FWHM / FWTM 63.0° / 77.5°
 Efficiency 88 %
 Peak intensity 0.9 cd/lm
 LEDs/each optic 4
 Light colour White
 Required components:
 C17422_DAISSY-4X1-SHD2-MATT



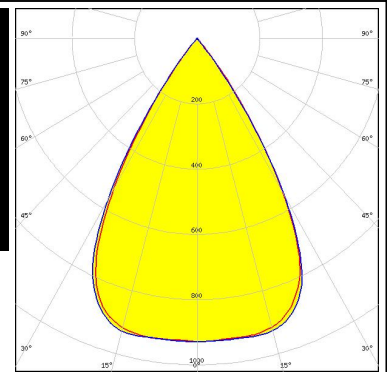
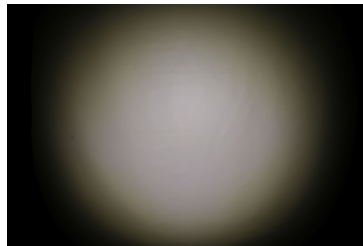
PHOTOMETRIC DATA (MEASURED):



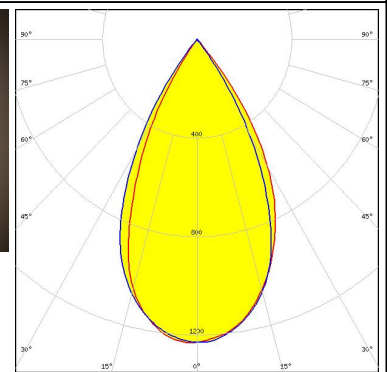
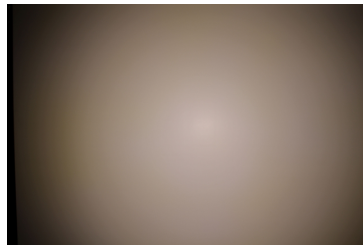
LED LIGHT ENGINE DAISY 16 LEDs 156mm x 20mm
 FWHM / FWTM 64.0° / 78.0°
 Efficiency 94 %
 Peak intensity 0.9 cd/lm
 LEDs/each optic 4
 Light colour White
 Required components:
 C16784_DAISSY-4X1-SHD-WHT



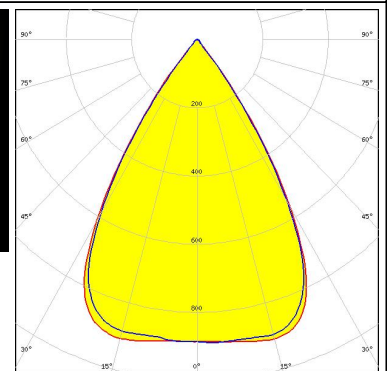
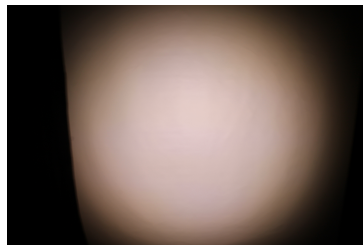
LED LIGHT ENGINE DAISY 16 LEDs 156mm x 20mm
 FWHM / FWTM 63.0° / 77.0°
 Efficiency 88 %
 Peak intensity 0.9 cd/lm
 LEDs/each optic 4
 Light colour White
 Required components:
 C16590_DAISSY-4X1-SHD



LED LinLED 156x28mm 2x200lm 827-865 2x2C 12V Opt G1
 FWHM / FWTM 54.0° / 74.0°
 Efficiency 90 %
 Peak intensity 1.2 cd/lm
 LEDs/each optic 2
 Light colour Tunable White
 Required components:
 C16590_DAISSY-4X1-SHD



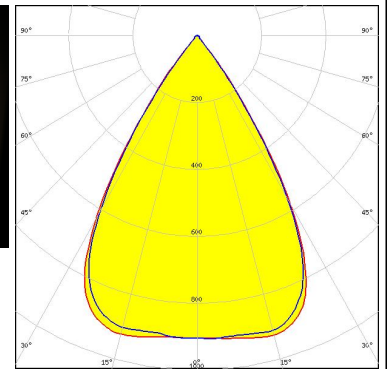
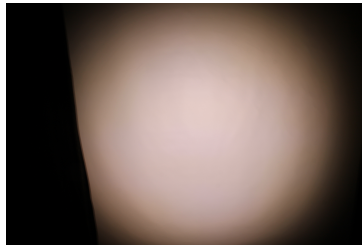
LED LinLED 156x28mm 2x400lm 827-865 2x2C 12V Opt G1
 FWHM / FWTM 65.0 + 64.5° / 80.0 + 78.5°
 Efficiency 93 %
 Peak intensity 0.9 cd/lm
 LEDs/each optic 4
 Light colour Tunable White
 Required components:
 C17535_DAISSY-4X1-SHD2-MET-MATT



PHOTOMETRIC DATA (MEASURED):

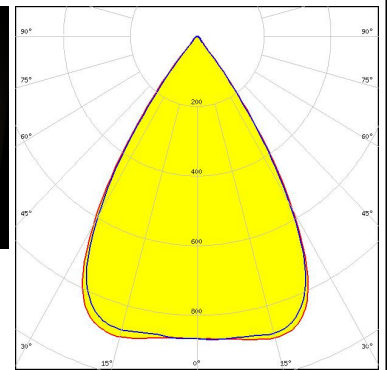
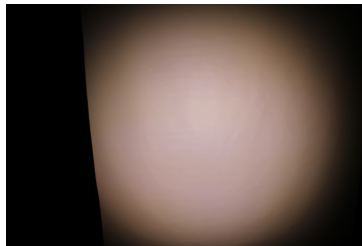
MST *Your solutions*

LED LinLED 156x28mm 2x400lm 827-865 2x2C 12V Opt G1
 FWHM / FWTM 64.5° / 79.0 + 78.5°
 Efficiency 93 %
 Peak intensity 0.9 cd/lm
 LEDs/each optic 4
 Light colour Tunable White
 Required components:
 C17528_DAISSY-4X1-SHD-MET



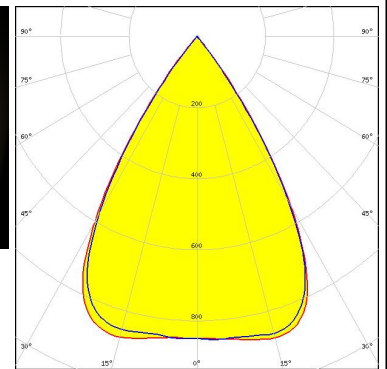
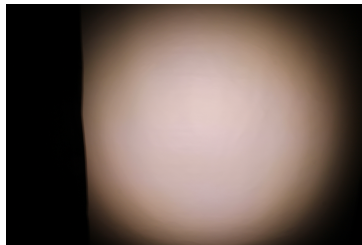
MST *Your solutions*

LED LinLED 156x28mm 2x400lm 827-865 2x2C 12V Opt G1
 FWHM / FWTM 65.0 + 64.5° / 80.0 + 78.5°
 Efficiency 94 %
 Peak intensity 0.9 cd/lm
 LEDs/each optic 4
 Light colour Tunable White
 Required components:
 C17423_DAISSY-4X1-SHD2-WHT-MATT



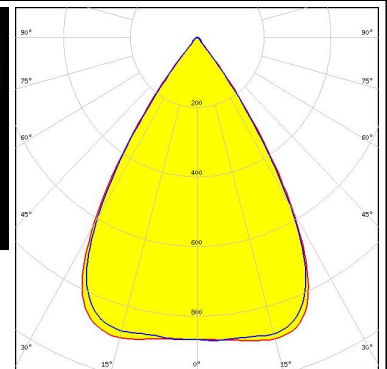
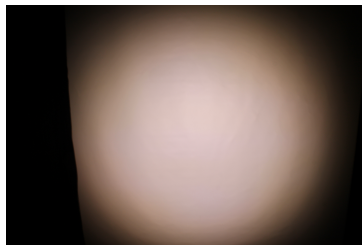
MST *Your solutions*

LED LinLED 156x28mm 2x400lm 827-865 2x2C 12V Opt G1
 FWHM / FWTM 65.0 + 64.5° / 79.0 + 78.0°
 Efficiency 88 %
 Peak intensity 0.9 cd/lm
 LEDs/each optic 4
 Light colour Tunable White
 Required components:
 C17422_DAISSY-4X1-SHD2-MATT



MST *Your solutions*

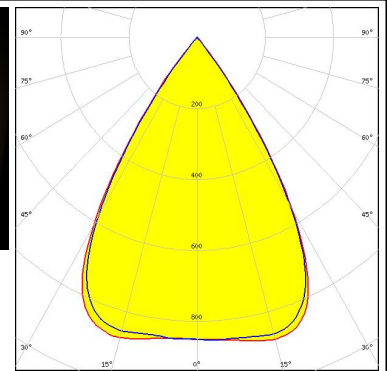
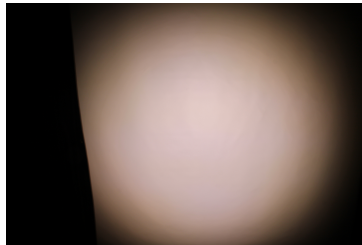
LED LinLED 156x28mm 2x400lm 827-865 2x2C 12V Opt G1
 FWHM / FWTM 65.0 + 64.5° / 80.0 + 78.5°
 Efficiency 94 %
 Peak intensity 0.9 cd/lm
 LEDs/each optic 4
 Light colour Tunable White
 Required components:
 C16784_DAISSY-4X1-SHD-WHT



PHOTOMETRIC DATA (MEASURED):

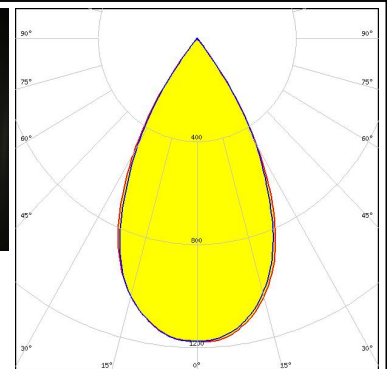
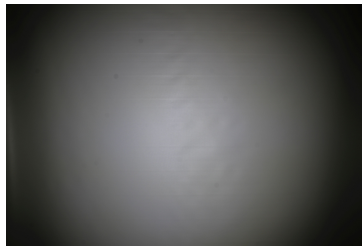
MST *Your solutions*

LED LinLED 156x28mm 2x400lm 827-865 2x2C 12V Opt G1
 FWHM / FWTM 65.0 + 64.5° / 79.0 + 78.0°
 Efficiency 88 %
 Peak intensity 0.9 cd/lm
 LEDs/each optic 4
 Light colour Tunable White
 Required components:
 C16590_DAISSY-4X1-SHD



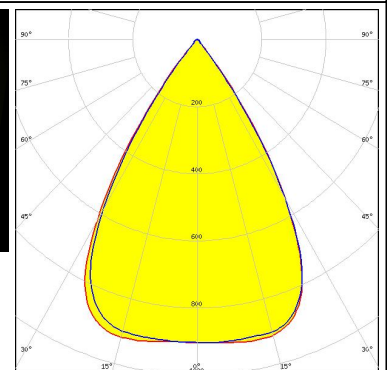
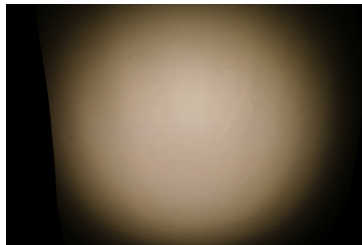
MST *Your solutions*

LED LinLED 156x28mm 400lm 8x0 2C 12V Opt G1
 FWHM / FWTM 56.0° / 75.0°
 Efficiency 90 %
 Peak intensity 1.2 cd/lm
 LEDs/each optic 2
 Light colour White
 Required components:
 C16590_DAISSY-4X1-SHD



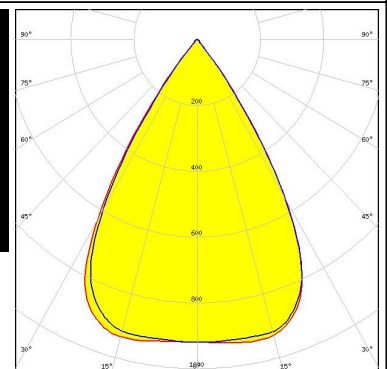
MST *Your solutions*

LED LinLED 156x28mm 800lm 8x0 2C 12V Opt G1
 FWHM / FWTM 64.5 + 64.0° / 79.0 + 78.5°
 Efficiency 92 %
 Peak intensity 0.9 cd/lm
 LEDs/each optic 4
 Light colour White
 Required components:
 C17537_DAISSY-28X1-SHD-MET-MATT



MST *Your solutions*

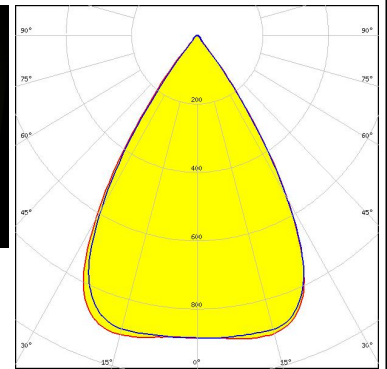
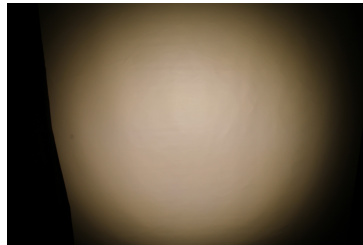
LED LinLED 156x28mm 800lm 8x0 2C 12V Opt G1
 FWHM / FWTM 64.0 + 63.5° / 79.0 + 77.5°
 Efficiency 93 %
 Peak intensity 0.9 cd/lm
 LEDs/each optic 4
 Light colour White
 Required components:
 C17528_DAISSY-4X1-SHD-MET



PHOTOMETRIC DATA (MEASURED):

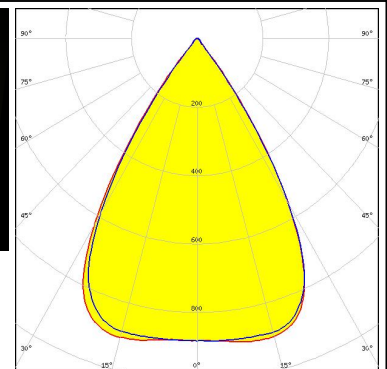
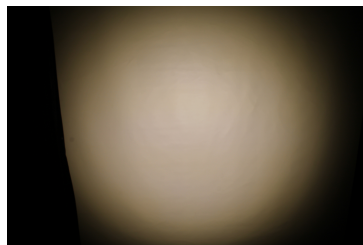
MST Your solutions

LED LinLED 156x28mm 800lm 8x0 2C 12V Opt G1
 FWHM / FWTM 65.0 + 64.5° / 79.5 + 78.5°
 Efficiency 93 %
 Peak intensity 0.9 cd/lm
 LEDs/each optic 4
 Light colour White
 Required components:
 C17423_DAISSY-4X1-SHD2-WHT-MATT



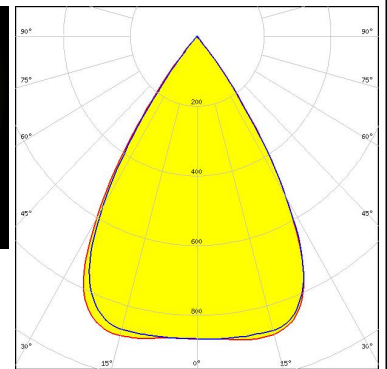
MST Your solutions

LED LinLED 156x28mm 800lm 8x0 2C 12V Opt G1
 FWHM / FWTM 65.0 + 64.5° / 80.0 + 78.5°
 Efficiency 93 %
 Peak intensity 0.9 cd/lm
 LEDs/each optic 4
 Light colour White
 Required components:
 C16784_DAISSY-4X1-SHD-WHT



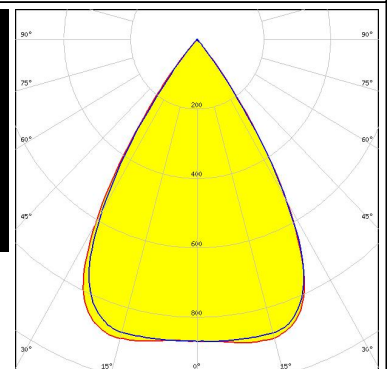
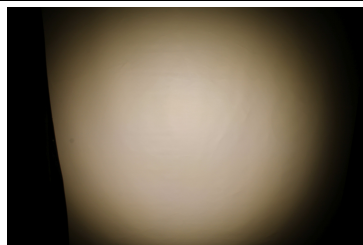
MST Your solutions

LED LinLED 156x28mm 800lm 8x0 2C 12V Opt G1
 FWHM / FWTM 64.0° / 79.0 + 77.5°
 Efficiency 87 %
 Peak intensity 0.9 cd/lm
 LEDs/each optic 4
 Light colour White
 Required components:
 C17422_DAISSY-4X1-SHD2-MATT



MST Your solutions

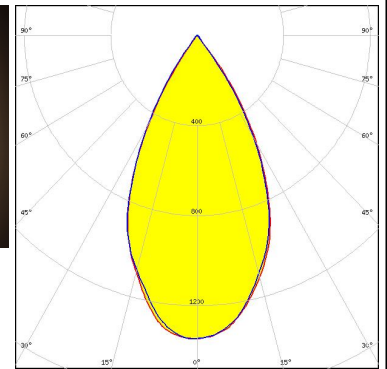
LED LinLED 156x28mm 800lm 8x0 2C 12V Opt G1
 FWHM / FWTM 64.5° / 79.0 + 77.5°
 Efficiency 88 %
 Peak intensity 0.9 cd/lm
 LEDs/each optic 4
 Light colour White
 Required components:
 C16590_DAISSY-4X1-SHD



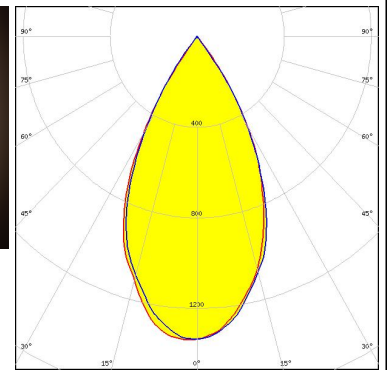
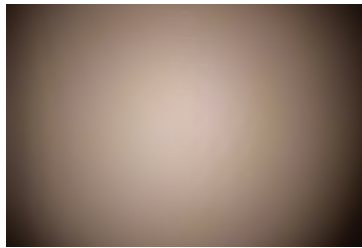
PHOTOMETRIC DATA (MEASURED):



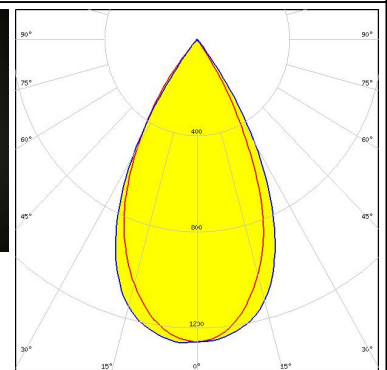
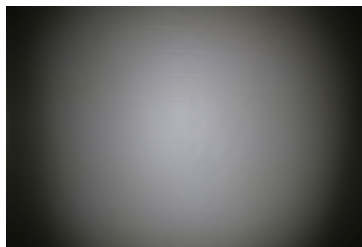
LED NF2W757G-MT (Tunable White)
 FWHM / FWTM 53.0° / 74.0°
 Efficiency 96 %
 Peak intensity 1.3 cd/lm
 LEDs/each optic 1
 Light colour Tunable White
 Required components:
 C16784_DAISSY-4X1-SHD-WHT



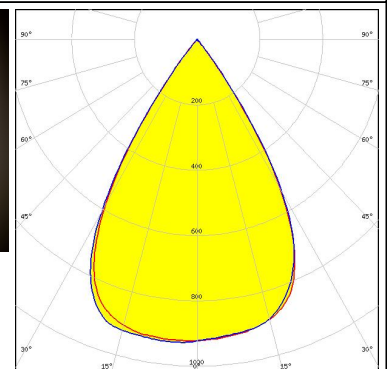
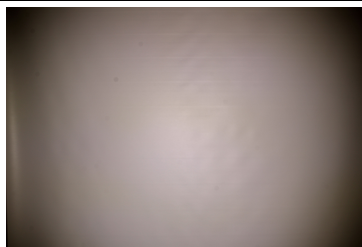
LED NF2W757G-MT (Tunable White)
 FWHM / FWTM 53.0° / 73.0°
 Efficiency 91 %
 Peak intensity 1.3 cd/lm
 LEDs/each optic 1
 Light colour Tunable White
 Required components:
 C16590_DAISSY-4X1-SHD



LED LM28xB Series
 FWHM / FWTM 54.0° / 73.0°
 Efficiency 91 %
 Peak intensity 1.3 cd/lm
 LEDs/each optic 1
 Light colour White
 Required components:
 C17422_DAISSY-4X1-SHD2-MATT



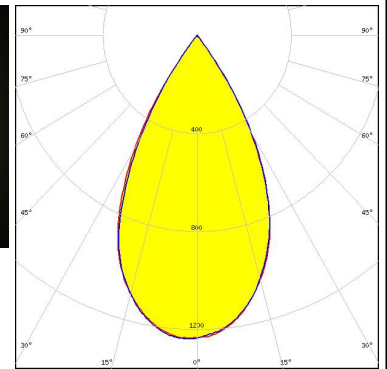
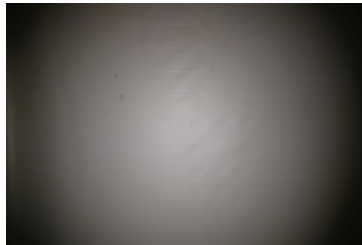
LED LM28xB Series
 FWHM / FWTM 64.0° / 77.0°
 Efficiency 89 %
 Peak intensity 0.9 cd/lm
 LEDs/each optic 4
 Light colour White
 Required components:
 C16590_DAISSY-4X1-SHD



PHOTOMETRIC DATA (MEASURED):

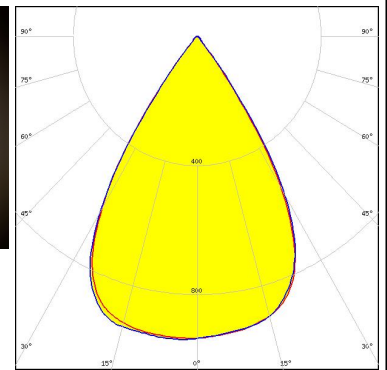
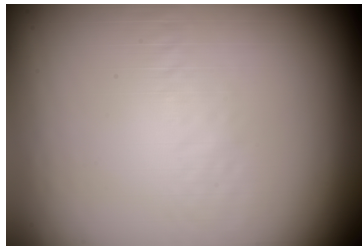
SAMSUNG

LED LM28xB Series
 FWHM / FWTM 55.0° / 73.0°
 Efficiency 91 %
 Peak intensity 1.2 cd/lm
 LEDs/each optic 2
 Light colour White
 Required components:
 C16590_DAISSY-4X1-SHD



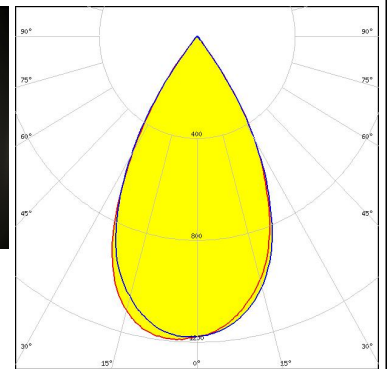
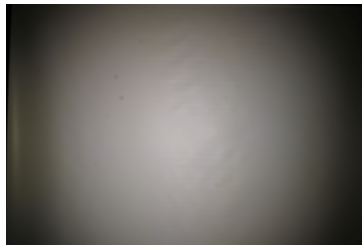
SAMSUNG

LED LM28xB Series
 FWHM / FWTM 64.0° / 78.0°
 Efficiency 94 %
 Peak intensity 0.9 cd/lm
 LEDs/each optic 4
 Light colour White
 Required components:
 C16784_DAISSY-4X1-SHD-WHT



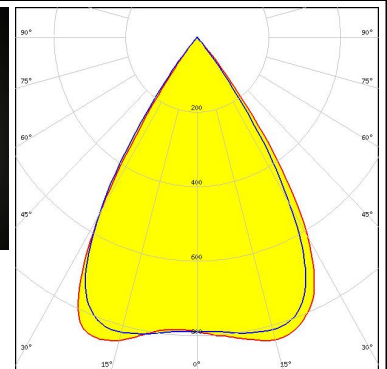
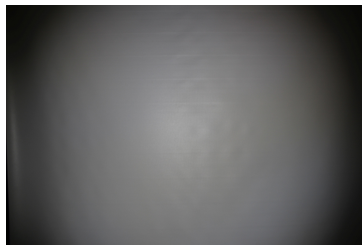
SAMSUNG

LED LM28xB Series
 FWHM / FWTM 56.0° / 75.0°
 Efficiency 94 %
 Peak intensity 1.2 cd/lm
 LEDs/each optic 2
 Light colour White
 Required components:
 C16784_DAISSY-4X1-SHD-WHT


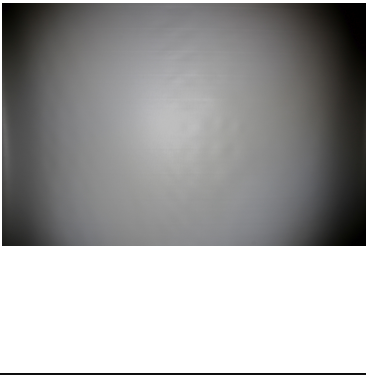
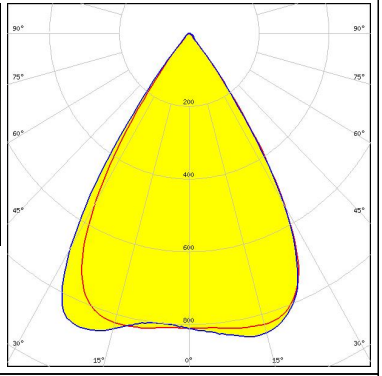


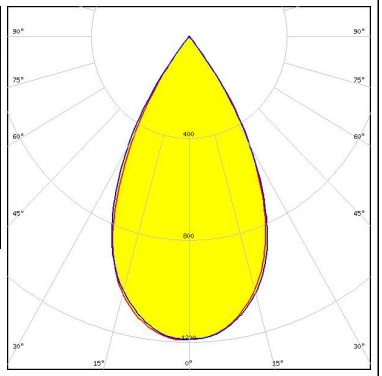


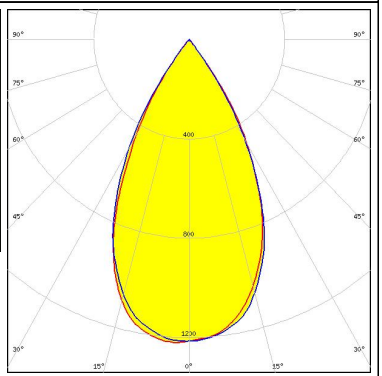


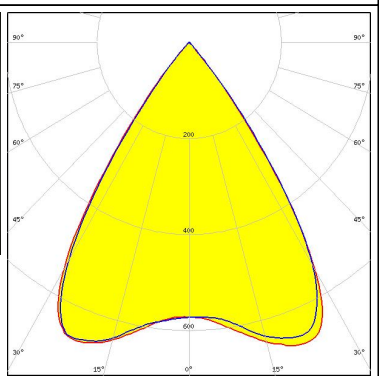


SEOUL SEMICONDUCTOR

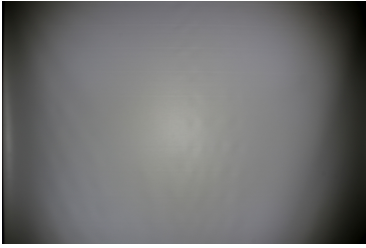
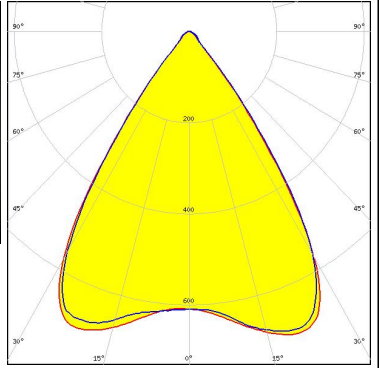

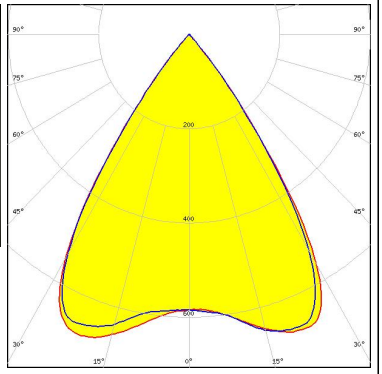

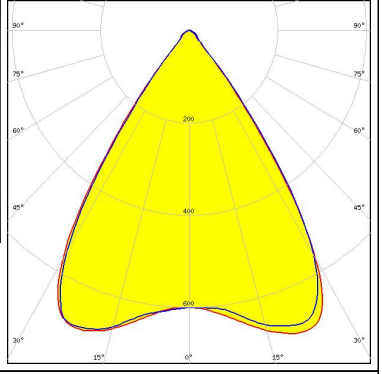
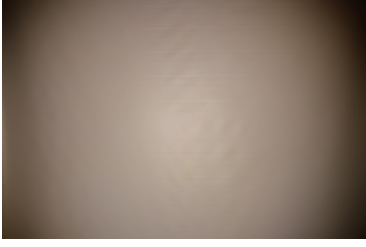
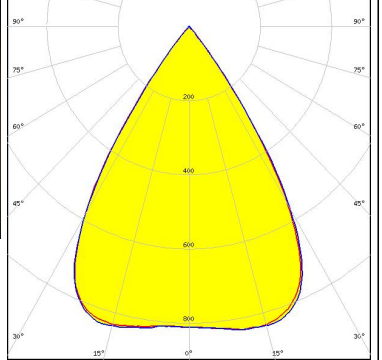
LED SEOUL DC 3030
 FWHM / FWTM 65.0° / 78.0°
 Efficiency 86 %
 Peak intensity 0.9 cd/lm
 LEDs/each optic 4
 Light colour Tunable White
 Required components:
 C16590_DAISSY-4X1-SHD



PHOTOMETRIC DATA (MEASURED):

<p> SEOUL SEMICONDUCTOR</p> <p>LED: SEOUL DC 3030 FWHM / FWTM: 66.0° / 79.0° Efficiency: 92 % Peak intensity: 0.9 cd/m LEDs/each optic: 4 Light colour: Tunable White Required components: C16784_DAISSY-4X1-SHD-WHT</p>		
<p> SEOUL SEMICONDUCTOR</p> <p>LED: SEOUL DC 3528 FWHM / FWTM: 56.0° / 75.0° Efficiency: 90 % Peak intensity: 1.2 cd/m LEDs/each optic: 2 Light colour: White Required components: C16590_DAISSY-4X1-SHD</p>		
<p> SEOUL SEMICONDUCTOR</p> <p>LED: SEOUL DC 3528 FWHM / FWTM: 54.0° / 74.0° Efficiency: 90 % Peak intensity: 1.2 cd/m LEDs/each optic: 2 Light colour: White Required components: C16590_DAISSY-4X1-SHD</p>		
<p> TEPCOMP group</p> <p>LED: PassivePAQ-L-0.5F35-SSA3-1.6K-840-3-DC FWHM / FWTM: 69.0° / 81.0° Efficiency: 82 % Peak intensity: 0.8 cd/m LEDs/each optic: 4 Light colour: White Required components: C16590_DAISSY-4X1-SHD</p>		

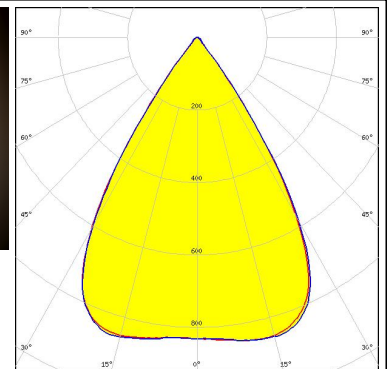
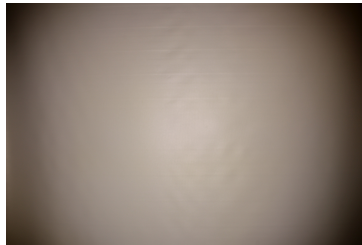
PHOTOMETRIC DATA (MEASURED):

<p>TEPCOMP group</p> <p>LED PassivePAQ-L-0.5F35-SSA3-1.6K-840-3-DC FWHM / FWTM 69.0° / 84.0° Efficiency 91 % Peak intensity 0.8 cd/m LEDs/each optic 4 Light colour White Required components: C17423_DAISSY-4X1-SHD2-WHT-MATT</p>		
<p>TEPCOMP group</p> <p>LED PassivePAQ-L-0.5F35-SSA3-1.6K-840-3-DC FWHM / FWTM 69.0° / 81.0 + 82.0° Efficiency 83 % Peak intensity 0.8 cd/m LEDs/each optic 4 Light colour White Required components: C17422_DAISSY-4X1-SHD2-MATT</p>		
<p>TEPCOMP group</p> <p>LED PassivePAQ-L-0.5F35-SSA3-1.6K-840-3-DC FWHM / FWTM 69.0° / 83.0° Efficiency 92 % Peak intensity 0.8 cd/m LEDs/each optic 4 Light colour White Required components: C16784_DAISSY-4X1-SHD-WHT</p>		
<p>TRIDONIC</p> <p>LED LLE 24x140mm 400lm 827-865 LVD ADV1 FWHM / FWTM 66.0° / 79.0° Efficiency 88 % Peak intensity 0.9 cd/m LEDs/each optic 4 Light colour White Required components: C16590_DAISSY-4X1-SHD</p>		

PHOTOMETRIC DATA (MEASURED):

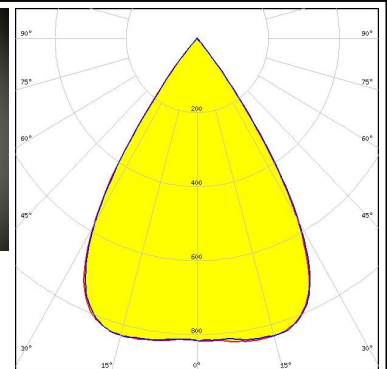
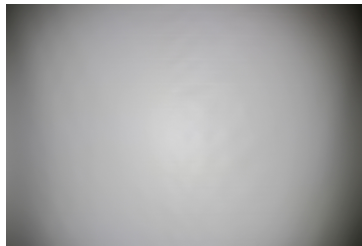
TRIDONIC

LED LLE 24x140mm 400lm 827-865 LVD ADV1
 FWHM / FWTM 66.0° / 80.0°
 Efficiency 94 %
 Peak intensity 0.9 cd/lm
 LEDs/each optic 4
 Light colour White
 Required components:
 C16784_DAISSY-4X1-SHD-WHT



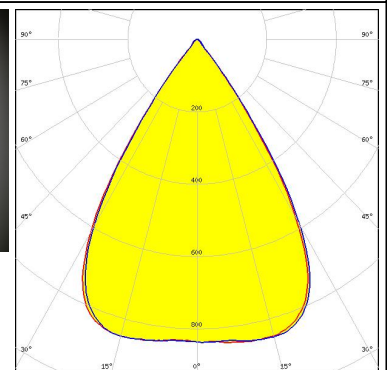
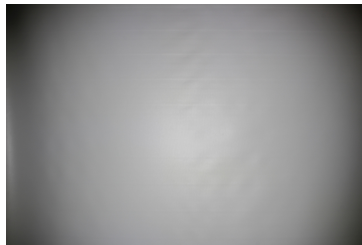
TRIDONIC

LED LLE 24x140mm 400lm 8x0 LVD ADV1
 FWHM / FWTM 66.0° / 79.0°
 Efficiency 88 %
 Peak intensity 0.8 cd/lm
 LEDs/each optic 4
 Light colour White
 Required components:
 C16590_DAISSY-4X1-SHD



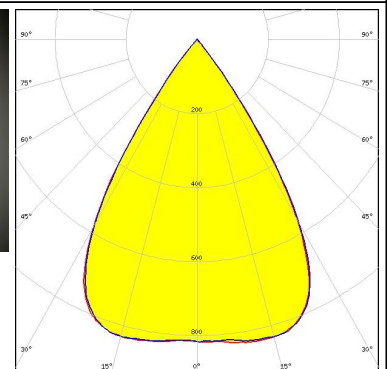
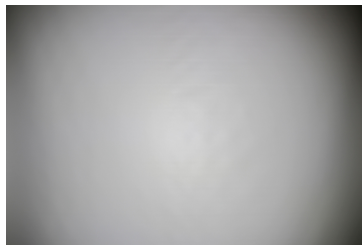
TRIDONIC

LED LLE 24x140mm 400lm 8x0 LVD ADV1
 FWHM / FWTM 66.0° / 80.0°
 Efficiency 94 %
 Peak intensity 0.9 cd/lm
 LEDs/each optic 4
 Light colour White
 Required components:
 C16784_DAISSY-4X1-SHD-WHT



TRIDONIC

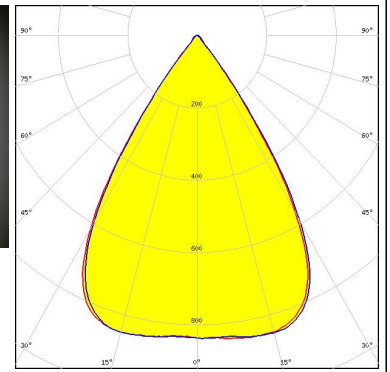
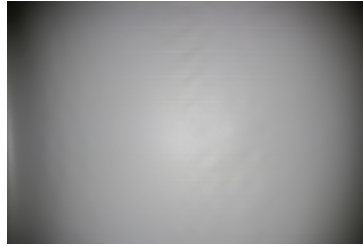
LED LLE 24x280mm 750lm 8x0 LVD ADV1
 FWHM / FWTM 66.0° / 79.0°
 Efficiency 88 %
 Peak intensity 0.9 cd/lm
 LEDs/each optic 4
 Light colour White
 Required components:
 C16590_DAISSY-4X1-SHD



PHOTOMETRIC DATA (MEASURED):

TRIDONIC

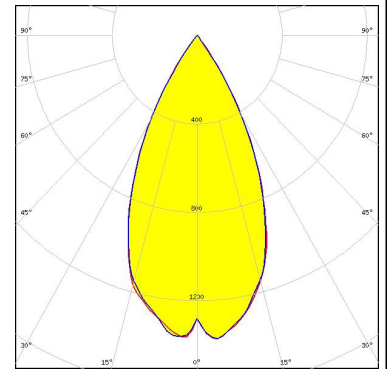
LED LLE 24x280mm 750lm 8x0 LVD ADV1
FWHM / FWMTM 66.0° / 80.0°
Efficiency 94 %
Peak intensity 0.9 cd/lm
LEDs/each optic 4
Light colour White
Required components:
C16784_DAISY-4X1-SHD-WHT



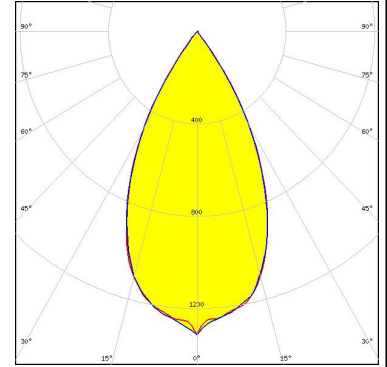
PHOTOMETRIC DATA (SIMULATED):



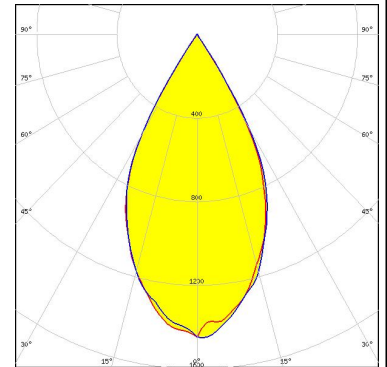
LED J Series 2835
 FWHM / FWTM 50.0° / 72.0°
 Efficiency 88 %
 Peak intensity 1.4 cd/lm
 LEDs/each optic 1
 Light colour White
 Required components:
 C17422_DAISSY-4X1-SHD2-MATT



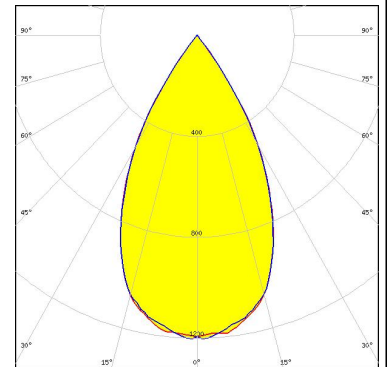
LED J Series 5050 Round LES
 FWHM / FWTM 52.0° / 74.0°
 Efficiency 89 %
 Peak intensity 1.3 cd/lm
 LEDs/each optic 1
 Light colour White
 Required components:
 C17422_DAISSY-4X1-SHD2-MATT



LED LUXEON 5050 Round LES
 FWHM / FWTM 54.0° / 69.0°
 Efficiency 92 %
 Peak intensity 1.5 cd/lm
 LEDs/each optic 1
 Light colour White
 Required components:
 C16590_DAISSY-4X1-SHD



LED NF2W757G-MT (Tunable White)
 FWHM / FWTM 56.0° / 76.0°
 Efficiency 91 %
 Peak intensity 1.2 cd/lm
 LEDs/each optic 2
 Light colour Tunable White
 Required components:
 C16590_DAISSY-4X1-SHD



PHOTOMETRIC DATA (SIMULATED):

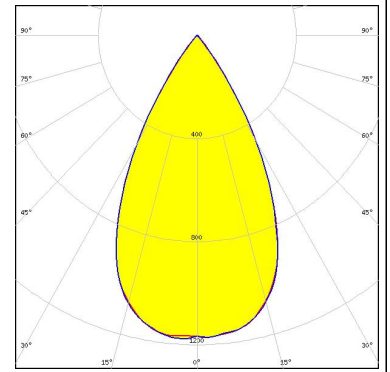
<p>NICHIA</p> <p>LED NF2W757G-MT (Tunable White)</p> <p>FWHM / FWTM 62.0° / 78.0°</p> <p>Efficiency 90 %</p> <p>Peak intensity 1 cd/lm</p> <p>LEDs/each optic 4</p> <p>Light colour Tunable White</p> <p>Required components: C16590_DAISY-4X1-SHD</p>	
<p>NICHIA</p> <p>LED NF2x757G</p> <p>FWHM / FWTM 50.0° / 72.0°</p> <p>Efficiency 92 %</p> <p>Peak intensity 1.5 cd/lm</p> <p>LEDs/each optic 1</p> <p>Light colour White</p> <p>Required components: C16590_DAISY-4X1-SHD</p>	
<p>NICHIA</p> <p>LED NF2x757G</p> <p>FWHM / FWTM 60.0° / 77.0°</p> <p>Efficiency 90 %</p> <p>Peak intensity 1.1 cd/lm</p> <p>LEDs/each optic 4</p> <p>Light colour White</p> <p>Required components: C16590_DAISY-4X1-SHD</p>	
<p>OSRAM Opto Semiconductors</p> <p>LED Duris S8</p> <p>FWHM / FWTM 52.0° / 73.0°</p> <p>Efficiency 91 %</p> <p>Peak intensity 1.4 cd/lm</p> <p>LEDs/each optic 1</p> <p>Light colour White</p> <p>Required components: C16590_DAISY-4X1-SHD</p>	

PHOTOMETRIC DATA (SIMULATED):

OSRAM

Opto Semiconductors

LED	Duris S8
FWHM / FWTM	56.0° / 76.0°
Efficiency	92 %
Peak intensity	1.2 cd/lm
LEDs/each optic	1
Light colour	White
Required components:	
	C16784_DAISY-4X1-SHD-WHT



GENERAL INFORMATION:

NOTE: The typical beam angle will be changed by different color, chip size and chip position tolerance. The typical total beam angle is the full angle measured where the luminous intensity is half of the peak value.

MATERIALS:

As part of our continuous research and improvement processes, and to ensure the best possible quality and availability of our products, LEDiL reserves the right to change material grades without notice.

PRODUCT DATA USER AGREEMENT AND DISCLAIMER:

The measured data in the provided downloadable LEDiL Product Datasheets and Mechanical 2D-Drawings is rounded and provided as reference for planning. LEDiL Oy's optical specifications have been verified by conducting performance testing of the products in accordance with the company's quality system. The reported data are averaged results of multiple measurements with typical variation. LEDiL Oy reserves the right to without prior notification make changes and improvements to its products.

LEDiL Oy assumes neither warranty, nor guarantee nor any other liability of any kind for the contents and correctness of the provided data. The provided data has been generated with highest diligence but the provided data may in reality not represent the complete possible variation range of all intrinsic parameters. Therefore, in certain cases a deviation from the provided data could occur.

LEDiL Oy reserves the right to undertake technical changes of its products without further notification which could lead to changes in the provided data. LEDiL Oy assumes no liability of any kind for the possible deviation from any provided data or any other damage resulting from the usage of the provided data.

The user agrees to this disclaimer and user agreement with the download or usage of the provided files.

LEDiL Oy

Joensuunkatu 13
FI-24240 SALO
Finland

LEDiL Inc.

228 West Page Street
Suite D
Sycamore IL 60178
USA

Ledil Optics Technology (Shenzhen) Co., Ltd.

405 , Block B
Casic Motor Building
Shenzhen 518057
P.R.CHINA

Local sales and technical support

[www.ledil.com/
where_to_buy](http://www.ledil.com/where_to_buy)

Shipping locations

Salo, Finland
Hong Kong, China

Distribution Partners

[www.ledil.com/
where_to_buy](http://www.ledil.com/where_to_buy)