

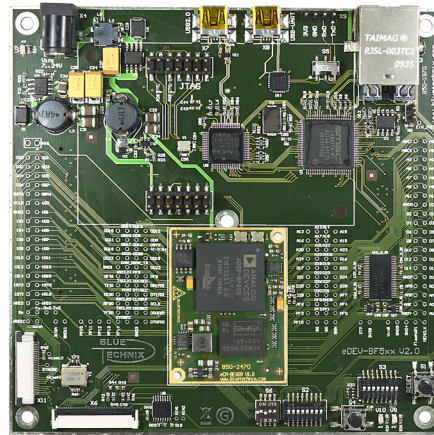
BF609 Starter Package

Blackfin® Starter Kit with eCM-BF609



BLUETECHNIX
Embedding Ideas

The eDEV-BF5xx Blackfin® Starter Package is a feature rich, low cost development kit designed for rapid prototyping based on Analog Devices' high performance dual core embedded processor ADSP-BF609. The starter package consists of the powerful Blackfin® based Core Module eCM-BF609 and the eDEV-BF5xx development board, which provides all interfaces on dedicated connectors. All Core Module pins are routed to solder pads which can be easily accessed by the developers. This allows customers to connect their own hardware and enables comfortable measurements. The eDEV-BF5xx supports the latest debugging interface from Analog Devices - ADI-SADA2 (Analog Devices Stand Alone Debug Agent) and features an extender socket (bottom side) for upcoming extender boards.



eDEV-BF5xx with connected eCM-BF609

based on **BLACKfin®**

Package Content

- » SoM - eCM-BF609
- » Carrier Board - eDEV-BF5xx
- » Ethernet cable
- » USB device cable
- » DC power supply

Highlights

- » ADSP BF609 Dual Core DSP
- » 256 MByte DDR2 SD-RAM up to 266 MHz
- » 8 MByte SPI Flash
- » Optimized for parallel digital signal processing
- » Full featured carrier board included
- » Industrial SoM available

Ordering Information

Order No.	Info
100-3401	Blackfin Evaluation Starter Package with eCM-BF609
100-1217-1	eCM-BF609
100-1218-1	eCM-BF609 Industrial

BF609 Starter Package

Blackfin® Starter Kit with eCM-BF609

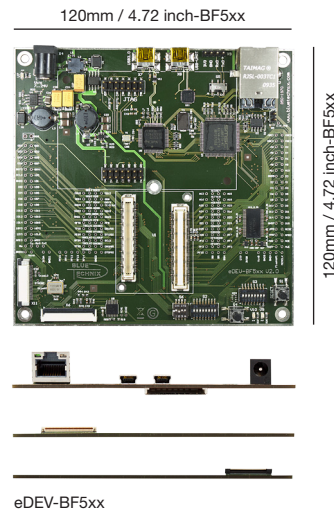


BLUETECHNIX
Embedding Ideas

Feature Overview eDEV-BF5xx

SUPPORTED CORE MODULES*	eCM-BF561, eCM-BF609
USB TO UART CONVERTER	✓
ETHERNET CONNECTOR	✓
USB 2.0 CONNECTOR	✓
CAMERA CONNECTOR	BLT-ISM-Connector**
TFT-DISPLAY CONNECTOR	EDT G- TFT Family Concept
SUPPORTED TFT-DISPLAYS	Various EDT G- TFTs (3.5" - 7.0")
ADI-SADA 2 CONNECTOR	✓
SD CARD SOCKET	✓
ADDITIONAL FEATURES	All pins of the connectors are available as solder pads
DIMENSIONS	120 x 120mm

*Further CMs are supported by adapters.
Goto: <http://www.bluetech.com/goto/edev-bf5xx>
**ISMs: <http://www.bluetech.com/goto/ism-ov>

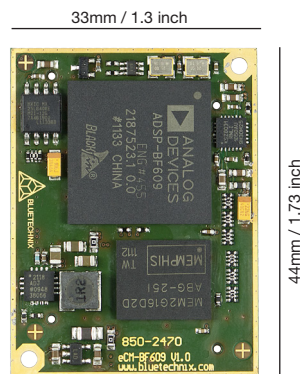


eDEV-BF5xx

Feature Overview eCM-BF609

PROCESSOR	ADSP-BF609 Blackfin® processor (Dual Core)
CLOCK	Up to 2 x 500MHz
RAM	256 MByte DDR2 SD-RAM up to 266 MHz
FLASH	8 MByte SPI Flash
ETHERNET	10/100 Mbit with IEEE1588
PPI	3 (1 x 24 bit and 2 x 18 bit)
TEMPERATURE RANGE	Commercial (0°C to +70°C) Industrial (-40 to +85°C)
Additional	On-Board core voltage regulator
	Low voltage reset circuit
DIMENSIONS	33 x 44mm

Goto: <http://www.bluetech.com/goto/ecm-bf609>



eCM-BF609

BLUETECHNIX GmbH
Waichhausenstraße 3/19 | 1140 Wien, Austria
+43 (1) 9142091 x 0 | +43 (1) 9142091 x 99
www.bluetech.com | office@bluetech.com